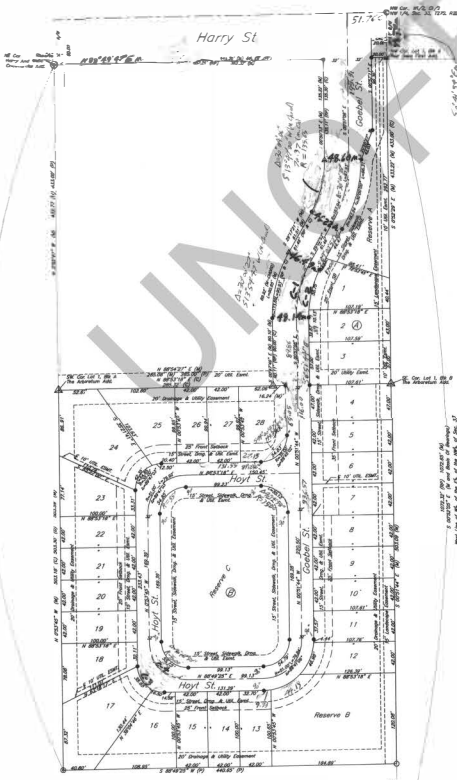


FOR
REFERENCE
ONLY

Buena Vista Addition
Replat of Avila Luxury Townhomes Addition
Wichita, Sedgwick County, Kansas
Part of the NW ¼, Section 33, Township 27 South, Range 2 East



State of Kansas }
County of Sedgwick } SS

Chad E. Abbott, P.E. #1346, and hereafter an official County and State, do hereby certify that we have surveyed and plotted the above ADDITION to Wichita, Sedgwick County, Kansas, and that the accompanying plat is a true and correct exhibit of the survey so surveyed, described as:

A replat of Lots 1 - 14 Block A, Lots 1 - 4, Block B, Parcels A and B, and of that portion of the street right-of-way and Linear Townhomes Addition to Wichita, Sedgwick County, Kansas.

All easements and rights-of-way within said tract are hereby created by virtue of K.S.A. 12-210, as amended.

Chad E. Abbott, P.E. #1346

Chad E. Abbott, P.E. #1346

C-1 = A-1+1/2
A = 260.18'
B = 267.51'-00"
C = 371.91'-00"
C-2 = B-160.07'
A = 260.18'
B = 267.51'-00"
C = 371.91'-00"
C-3 = A-250.00'
A = 260.18'
B = 267.51'-00"
C = 371.91'-00"

C-4 = A-250.00'
A = 260.18'
B = 267.51'-00"
C = 371.91'-00"



Legend

- (A) easement
- (B) easement
- (C) easement from Abbeville Plat
- (D) easement
- ▲ Found 5" Pipe (Drain Unknown)
- Found 1/4" Pipe (Drain/Valve)
- ◆ Found 5" Rubber (24) IS #1346 Clay
- ▲ Found 5" Pipe (Drain Unknown)
- May Not Be in True Spots
- Unknown

Remarks:
S.W. 1/4 Sec. 11 NE of SE Corner #4 Lot 1,
S.W. 1/4 The Abbeville Add.
Division 1-51-05' N45D 48'

Survey journal of field was surveyed on 3rd day of December, 2020

State of Kansas }
County of Sedgwick } SS

Know all men by these presents, that we, the undersigned, have caused the land described in the surveyor's certificate to be platted into Lots, Blocks, Streets and Reserves to be known as Buena Vista Addition, Wichita, Sedgwick County, Kansas. Any and all easements are hereby granted to the public on condition that the Access Contracts as indicated are hereby granted to the appropriate governing body. Any utility easements are hereby granted to the public on condition that the appropriate governing body shall be responsible for the construction and maintenance of all public utilities. Street, sidewalk, drainage and utility easements are hereby granted to the public on condition that the appropriate governing body shall be responsible for the construction and maintenance of all public utilities. Street, drainage and utility easements are hereby granted to the public on condition that the appropriate governing body shall be responsible for the construction and maintenance of all public utilities. No private drainage systems shall be installed within public drainage easements unless a Homeowner Drainage Relief Permit is obtained from the City of Wichita Public Works & Utilities Department. This Landowner Consent is hereby granted as evidence for the construction and maintenance of landscape buffering. A master drainage plan has been developed for this tract. All drainage easements, rights-of-way, and reserves shall remain of established grade (unless modified with the approval of the City Engineer) and shall be unobstructed to allow for the conveyance of stormwater in accordance with the Stormwater Manual. The maintenance of all drainageways and drainage facilities in landscape drainage easements and reserves shall be the responsibility of the property owner, and shall be enforced by the Homeowner's Association and is provided for in the Homeowner's Association covenants. (Easement, floodplain and regulatory floodway boundaries) are subject to periodic change and such change may affect the standard land use within the subdivision. And further that the land contained herein is held and shall be conveyed subject to any applicable restrictions, reservations and covenants now on file or hereafter filed in the Office of the Register of Deeds of Sedgwick County, Kansas. All abutter's right of access to and from Harry Street is hereby granted to the appropriate governing body as shown on the plat. Reserves B, C, D, E, F, G, H, I, J, K, L, M, N, O, P, Q, R, S, T, U, V, W, X, Y, Z, AA, AB, AC, AD, AE, AF, AG, AH, AI, AJ, AK, AL, AM, AN, AO, AP, AQ, AR, AS, AT, AU, AV, AW, AX, AY, AZ, BA, BB, BC, BD, BE, BF, BG, BH, BI, BJ, BK, BL, BM, BN, BO, BP, BQ, BR, BS, BT, BU, BV, BW, BX, BY, BZ, CA, CB, CC, CD, CE, CF, CG, CH, CI, CJ, CK, CL, CM, CN, CO, CP, CQ, CR, CS, CT, CU, CV, CW, CX, CY, CZ, DA, DB, DC, DD, DE, DF, DG, DH, DI, DJ, DK, DL, DM, DN, DO, DP, DQ, DR, DS, DT, DU, DV, DW, DX, DY, DZ, EA, EB, EC, ED, EE, EF, EG, EH, EI, EJ, EK, EL, EM, EN, EO, EP, EQ, ER, ES, ET, EU, EV, EW, EX, EY, EZ, FA, FB, FC, FD, FE, FF, FG, FH, FI, FJ, FK, FL, FM, FN, FO, FP, FQ, FR, FS, FT, FU, FV, FW, FX, FY, FZ, GA, GB, GC, GD, GE, GF, GG, GH, GI, GJ, GK, GL, GM, GN, GO, GP, GQ, GR, GS, GT, GU, GV, GW, GX, GY, GZ, HA, HB, HC, HD, HE, HF, HG, HH, HI, HJ, HK, HL, HM, HN, HO, HP, HQ, HR, HS, HT, HU, HV, HW, HX, HY, HZ, IA, IB, IC, ID, IE, IF, IG, IH, II, IJ, IK, IL, IM, IN, IO, IP, IQ, IR, IS, IT, IU, IV, IW, IX, IY, IZ, JA, JB, JC, JD, JE, JF, JG, JH, JI, JJ, JK, JL, JM, JN, JO, JP, JQ, JR, JS, JT, JU, JV, JW, JX, JY, JZ, KA, KB, KC, KD, KE, KF, KG, KH, KI, KJ, KL, KM, KN, KO, KP, KQ, KR, KS, KT, KU, KV, KW, KX, KY, KZ, LA, LB, LC, LD, LE, LF, LG, LH, LI, LJ, LK, LM, LN, LO, LP, LQ, LR, LS, LT, LU, LV, LW, LX, LY, LZ, MA, MB, MC, MD, ME, MF, MG, MH, MI, MJ, MK, ML, MM, MN, MO, MP, MQ, MR, MS, MT, MU, MV, MW, MX, MY, MZ, NA, NB, NC, ND, NE, NF, NG, NH, NI, NJ, NK, NL, NM, NN, NO, NP, NQ, NR, NS, NT, NU, NV, NW, NX, NY, NZ, OA, OB, OC, OD, OE, OF, OG, OH, OI, OJ, OK, OL, OM, ON, OO, OP, OQ, OR, OS, OT, OU, OV, OW, OX, OY, OZ, PA, PB, PC, PD, PE, PF, PG, PH, PI, PJ, PK, PL, PM, PN, PO, PP, PQ, PR, PS, PT, PU, PV, PW, PX, PY, PZ, QA, QB, QC, QD, QE, QF, QG, QH, QI, QJ, QK, QL, QM, QN, QO, QP, QQ, QR, QS, QT, QU, QV, QW, QX, QY, QZ, RA, RB, RC, RD, RE, RF, RG, RH, RI, RJ, RK, RL, RM, RN, RO, RP, RQ, RR, RS, RT, RU, RV, RW, RX, RY, RZ, SA, SB, SC, SD, SE, SF, SG, SH, SI, SJ, SK, SL, SM, SN, SO, SP, SQ, SR, SS, ST, SU, SV, SW, SX, SY, SZ, TA, TB, TC, TD, TE, TF, TG, TH, TI, TJ, TK, TL, TM, TN, TO, TP, TQ, TR, TS, TU, TV, TW, TX, TY, TZ, UA, UB, UC, UD, UE, UF, UG, UH, UI, UJ, UK, UL, UM, UN, UO, UP, UQ, UR, US, UT, UU, UV, UW, UX, UY, UZ, VA, VB, VC, VD, VE, VF, VG, VH, VI, VJ, VK, VL, VM, VN, VO, VP, VQ, VR, VS, VT, VU, VW, VX, VY, VZ, WA, WB, WC, WD, WE, WF, WG, WH, WI, WJ, WK, WL, WM, WN, WO, WP, WQ, WR, WS, WT, WU, WV, WW, WX, WY, WZ, XA, XB, XC, XD, XE, XF, XG, XH, XI, XJ, XK, XL, XM, XN, XO, XP, XQ, XR, XS, XT, XU, XV, XW, XX, XY, XZ, YA, YB, YC, YD, YE, YF, YG, YH, YI, YJ, YK, YL, YM, YN, YO, YP, YQ, YR, YS, YT, YU, YV, YW, YX, YY, YZ, ZA, ZB, ZC, ZD, ZE, ZF, ZG, ZH, ZI, ZJ, ZK, ZL, ZM, ZN, ZO, ZP, ZQ, ZR, ZS, ZT, ZU, ZV, ZW, ZX, ZY, ZZ

By: Chad E. Abbott, P.E. #1346, Civil Engineer, LLC
State of Kansas }
County of Sedgwick } SS

This plat was acknowledged before me on this 12th day of December, 2021, by Chad E. Abbott, President, Civil Miller Properties, LLC.
Notary Public
My Commission Expires: 12/05/2024

WITNESSE MY HAND AND SEAL
At the undersigned's office of a Notary on the above described property, do hereby certify to this plat of Buena Vista Addition, Wichita, Sedgwick County, Kansas.
By: [Signature] 7/20/21
Secretary/Notary Public, Date
Secretary at Wichita Vice-President of [Organization]

State of Kansas }
County of Sedgwick } SS

This plat was acknowledged before me on this 12th day of December, 2021, by [Signature] and [Signature].
My Commission Expires: 12/07/2024

State of Kansas }
County of Wichita } SS

This plat of "BUENA VISTA ADDITION" Wichita, Sedgwick County, Kansas, has been submitted to and approved by the Wichita-Sedgwick County Metropolitan Area Planning Commission, Wichita, Kansas, dated this 12th day of December, 2021, Wichita-Sedgwick County Metropolitan Area Planning Commission.

[Signature]
Michael C. Gray, Chair
[Signature]
Sue A. Wade, Secretary



State of Kansas }
County of Sedgwick } SS

This plat approved and all dedications shown hereon accepted by the City Council of the City of Wichita, Kansas, this day of December, 2021.

At the Direction of the City Council:
[Signature] Mayor
[Signature] City Clerk

Entered on transfer record this 12th day of December, 2021, at 1:58 PM.
Katy E. Arnold, County Clerk
State of Kansas }
County of Sedgwick } SS



This is to certify that this plat has been filed for record in the Office of the Register of Deeds this 12th day of December, 2021, at 4:55 PM in Book 214 and is duly recorded.

[Signature] Register of Deeds
[Signature] Deputy

Registered in accordance with K.S.A. 58-2025 on this 12th day of December, 2021.

[Signature] Register of Deeds
[Signature] Deputy



KEMILLER
ENGINEERING PA
117 E. Lewis, Wichita, KS 67202 (316)264-0242