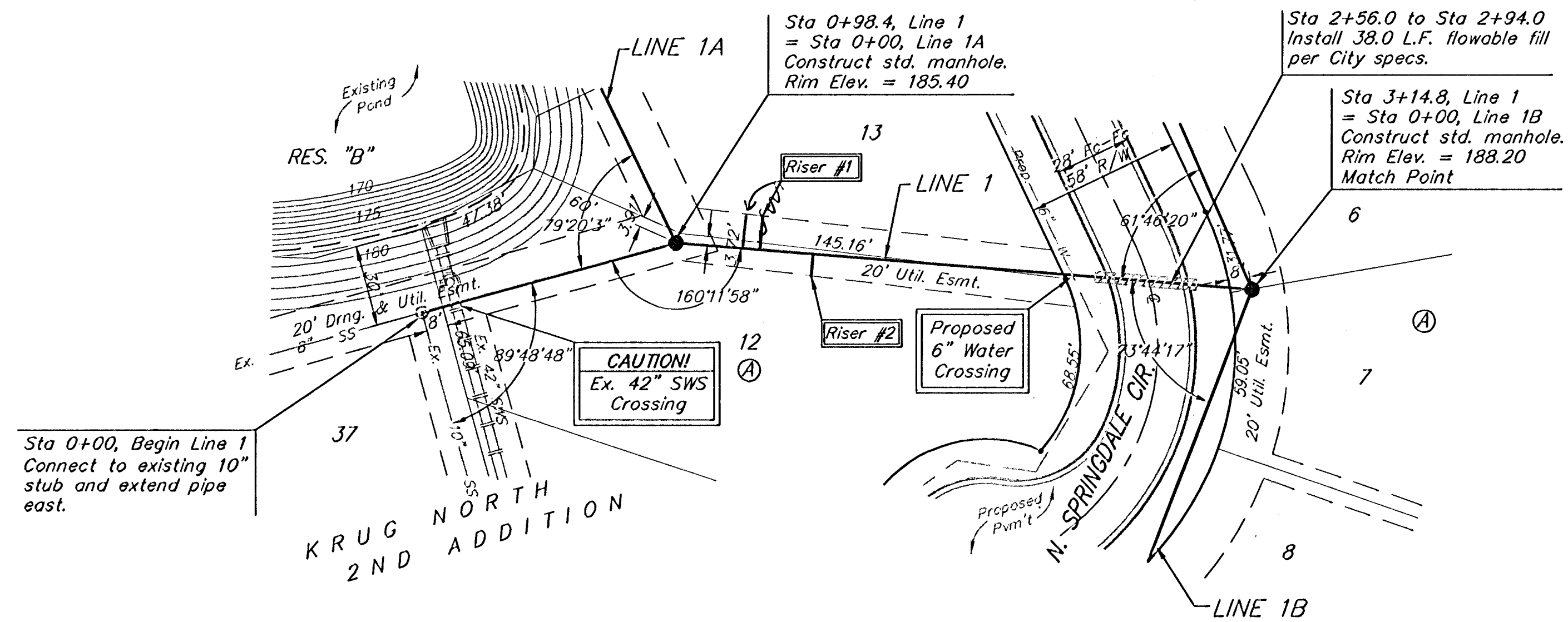


BENCHMARK:
 BM #1: "□" Cut in middle of
 N headwall of RCBC on 21st
 St. North, 1004.3' W & 22.1'
 N of SE Cor., SE1/4, Sec. 2,
 T-27-S, R-2-E.
 Elev. = 173.23 City Datum

BM #2: "□" Cut at the SE
 corner of the intersection of
 Castle Rock & Castle Rock Ct.,
 Krug North Addition.
 Elev. = 183.50 City Datum

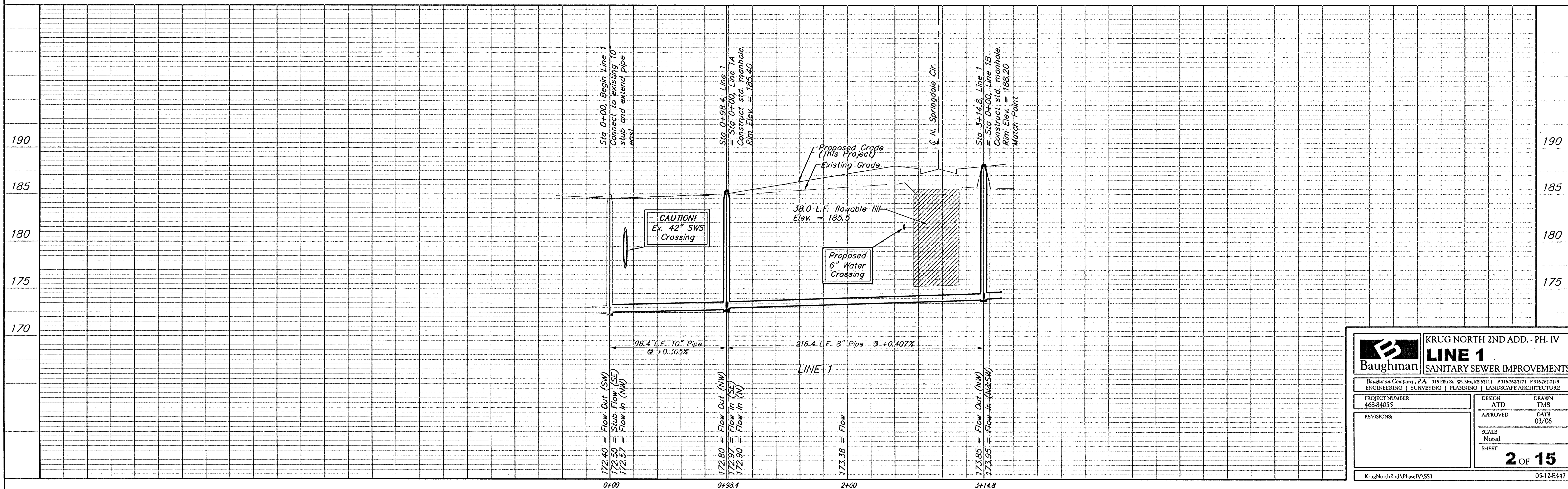


Scale: 1" = 40' Horizontal
 1" = 5' Vertical
 • = Iron

SEWER SERVICE TABLE

NUMBER	TYPE	LOCATION			STATION DIRECTION	FOR INFORMATION ONLY	
		LOT NO.	BLOCK NO.	LINE NO.		APPROXIMATE LENGTH 4" PIPE	
1	8" X 4" Tee	13	A	1	1+38/Lt. 2	10'	13' 75"
2	8" X 4" Tee	12	A	1	1+50/Rt. 1	9'	8' 8"

NOTE: Vertical Riser Pipe shall be extended to 2' minimum above ground water elevation and 4' maximum below proposed ground elevation.



Baughman KRUG NORTH 2ND ADD. - PH. IV
LINE 1
 SANITARY SEWER IMPROVEMENTS

Baughman Company, P.A. 315 Ella St. Wichita, KS 67211 P316262-7771 F316262-0149
 ENGINEERING | SURVEYING | PLANNING | LANDSCAPE ARCHITECTURE

PROJECT NUMBER 468-84055	DESIGN ATD	DRAWN TMS
REVISIONS	APPROVED	DATE 03/06
SCALE Noted		SHEET 2 OF 15

KrugNorth2ndPhaseVSS1 05-12-E417