

BENCHMARK:  
 BM #1: "□" Cut in middle of  
 N headwall of RCBC on 21st  
 St. North, 1004.3' W & 22.1'  
 N of SE Cor., SE1/4, Sec. 2,  
 T-27-S, R-2-E.  
 Elev. = 173.23 City Datum

BM #2: "□" Cut at the SE  
 corner of the intersection of  
 Castle Rock & Castle Rock Ct.,  
 Krug North Addition.  
 Elev. = 183.50 City Datum

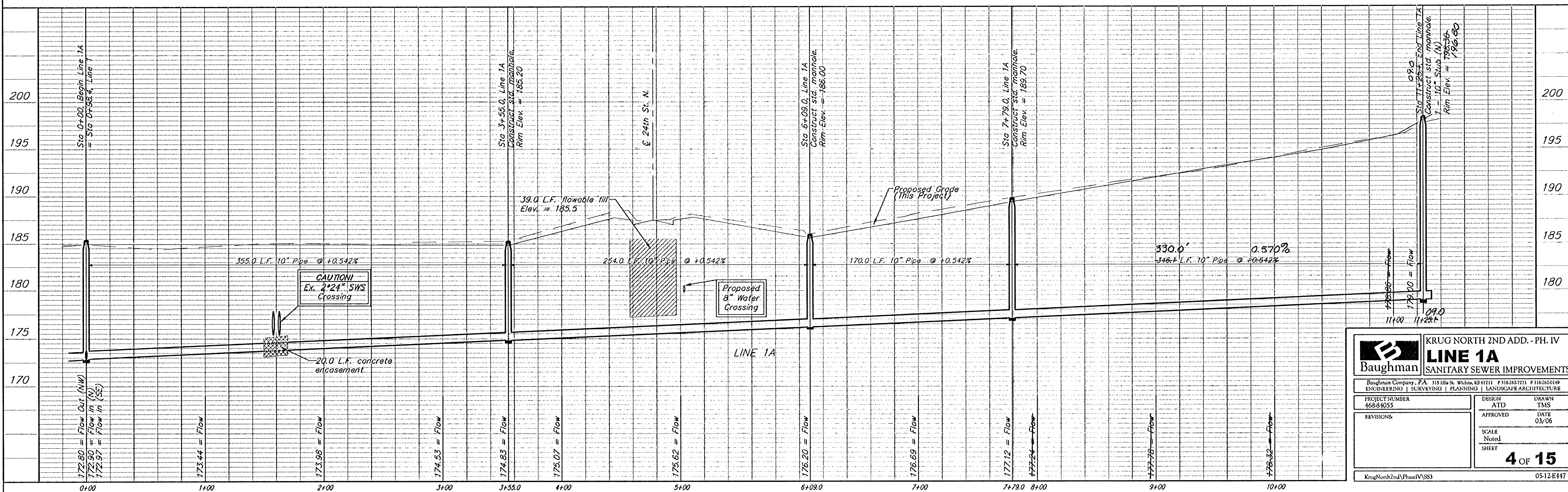
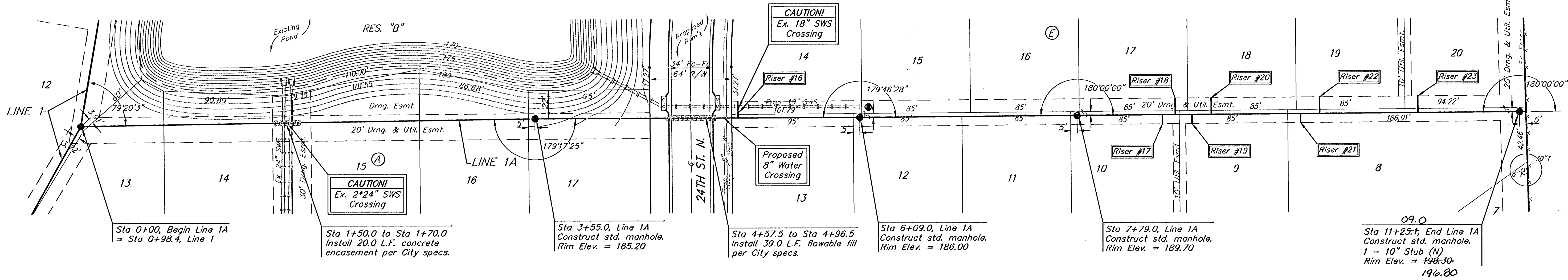
SEWER SERVICE TABLE

NUMBER	TYPE	LOCATION				FOR INFORMATION ONLY	
		LOT NO.	BLOCK NO.	LINE NO.	STATION\ DIRECTION	APPROXIMATE LENGTH 4" PIPE VERTICAL	HORIZONTAL
16	8" X 4" Tee	14	E	1A	5+14/Lt.	7'	33' 4.16'
17	8" X 4" Tee	10	E	1A	8+45/Rt.	8'	3' 8.3'
18	8" X 4" Tee	17	E	1A	8+55/Lt.	8'	13' 15.2'
19	8" X 4" Tee	9	E	1A	8+70/Rt.	9'	2' 8.1'
20	8" X 4" Tee	18	E	1A	8+90/Lt.	9'	33' 14.6'
21	8" X 4" Tee	8	E	1A	9+50/Rt.	9'	3' 8.5'
22	8" X 4" Tee	19	E	1A	9+70/Lt. 73.5	9'	33' 16.1'
23	8" X 4" Tee	20	E	1A	10+45/Lt. 46.2	9'	13' 15.75'

NOTE: Vertical Riser Pipe shall be extended to 2' minimum above ground water elevation and 4' maximum below proposed ground elevation.

Scale: 1" = 40' Horizontal  
 1" = 5' Vertical  
 • = Iron

KRUG NORTH  
 2ND  
 ADDITION



**Baughman** KRUG NORTH 2ND ADD. - PH. IV  
**LINE 1A**  
 SANITARY SEWER IMPROVEMENTS

Baughman Company, P.A. 315 E. 11th St. Wichita, KS 67211 P 316-262-7771 F 316-262-0149  
 ENGINEERING | SURVEYING | PLANNING | LANDSCAPE ARCHITECTURE

PROJECT NUMBER: 468-84055 DESIGN: ATD DRAWN: TMS  
 APPROVED: DATE: 03/06

REVISIONS:

SCALE: Noted  
 SHEET: 4 OF 15

KrugNorth2ndPhaseVSS3 05-12-E417