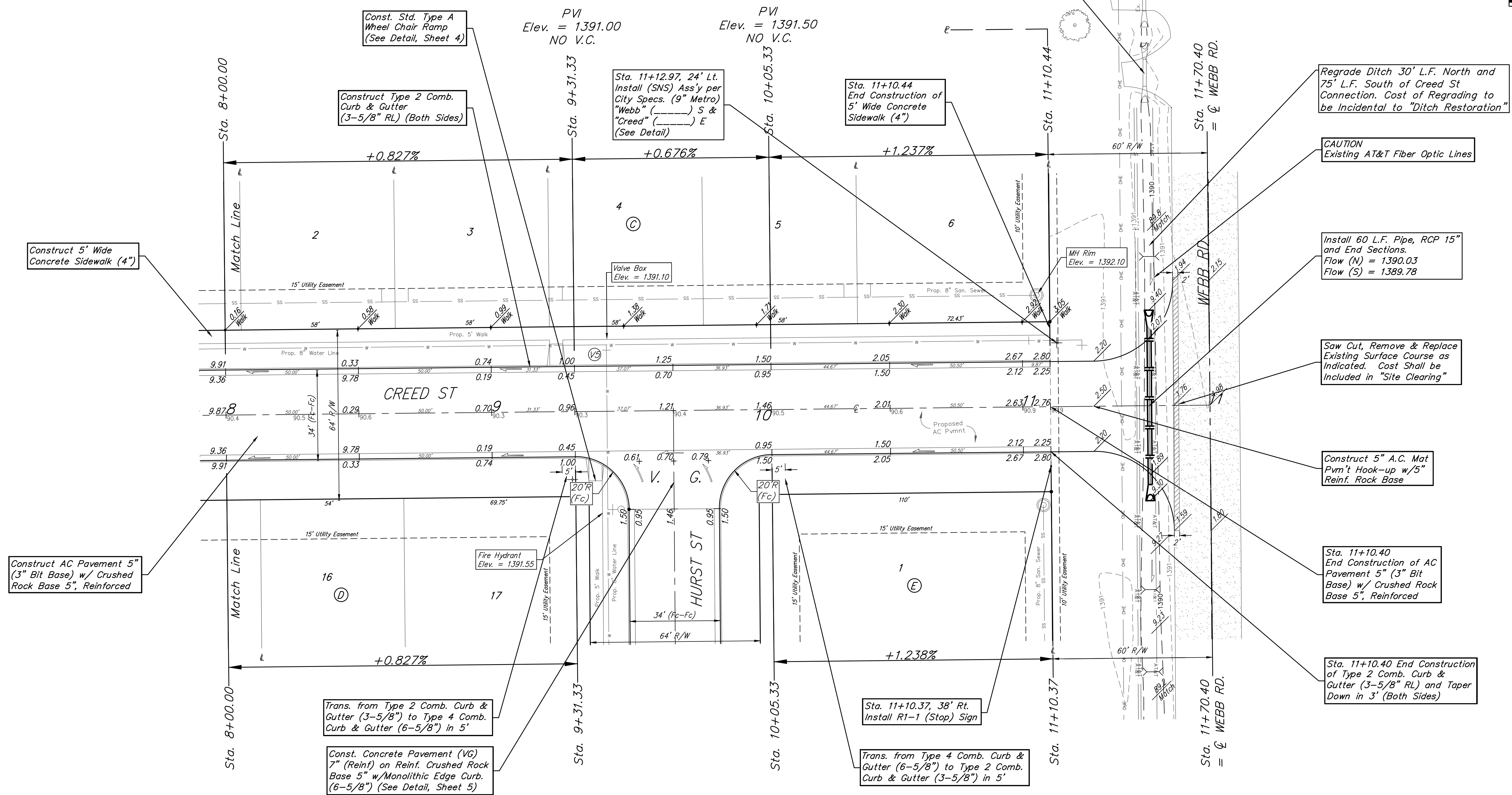
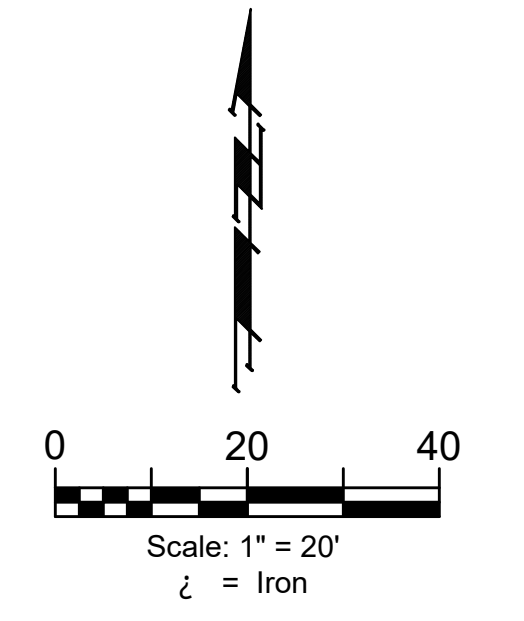


BENCHMARKS:
 BM-1#
 SQUARE CUT ON TOP OF CURB 119.3'± N.
 & 6.4'± W. OF SE. COR. LOT 7, BLOCK 2,
 TURTLE RUN 3RD ADDITION.
 ELEV. = 1390.32 NAVD88

BM-2#
 SQUARE CUT ON TOP OF CURB 118.4'± N.
 OF SE. COR. LOT 6, BLOCK 2, TURTLE
 RUN 2ND ADDITION.
 ELEV. = 1391.04 NAVD88



Regrade Ditch 30' L.F. North and 75' L.F. South of Creed St Connection. Cost of Regrading to be Incidental to "Ditch Restoration"

CAUTION Existing AT&T Fiber Optic Lines

Install 60 L.F. Pipe, RCP 15" and End Sections. Flow (N) = 1390.03 Flow (S) = 1389.78

Saw Cut, Remove & Replace Existing Surface Course as Indicated. Cost Shall be Included in "Site Clearing"

Construct 5" A.C. Mat Pvm't Hook-up w/5" Reinf. Rock Base

Sta. 11+10.40 End Construction of AC Pavement 5" (3" Bit Base) w/ Crushed Rock Base 5", Reinforced

Sta. 11+10.40 End Construction of Type 2 Comb. Curb & Gutter (3-5/8" RL) and Taper Down in 3' (Both Sides)

Roll type curb & gutter to be constructed on the pavement on this sheet. Top of curb elevation are given for full height curb.



BAUGHMAN COMPANY
 315 Ellis St.
 Wichita, KS 67211
 316-262-7271
 BaughmanCo.com

TOWNE PARC 10TH ADDITION PHASE 1

CREED ST

Sta. 8+00.00 to Sta. 11+70.40 Street Paving Improvements

PROJECT NUMBER: _____

DESIGN: NBW DRAWN: JLD
 DATE: 28 September 2023

SHEET **18** OF **43**

File: E:\Projects\Towne Parc 10th Addition_22-01-P743\Engineering\PHASE 1\STR_22-11-E355\STR.dwg