

BENCHMARKS:
 BM #1: "C" Cut on Top of Curb at West Line of Lot 7, Block A, Auburn Hills 5th Addition. Elev. = 207.73 (City Datum)

BM #2: Disc in Back of Curb, North of Front Corner Common to Lots 23 and 24, Block D, Auburn Hills 12th Addition. Elev. = 191.84 (City Datum)

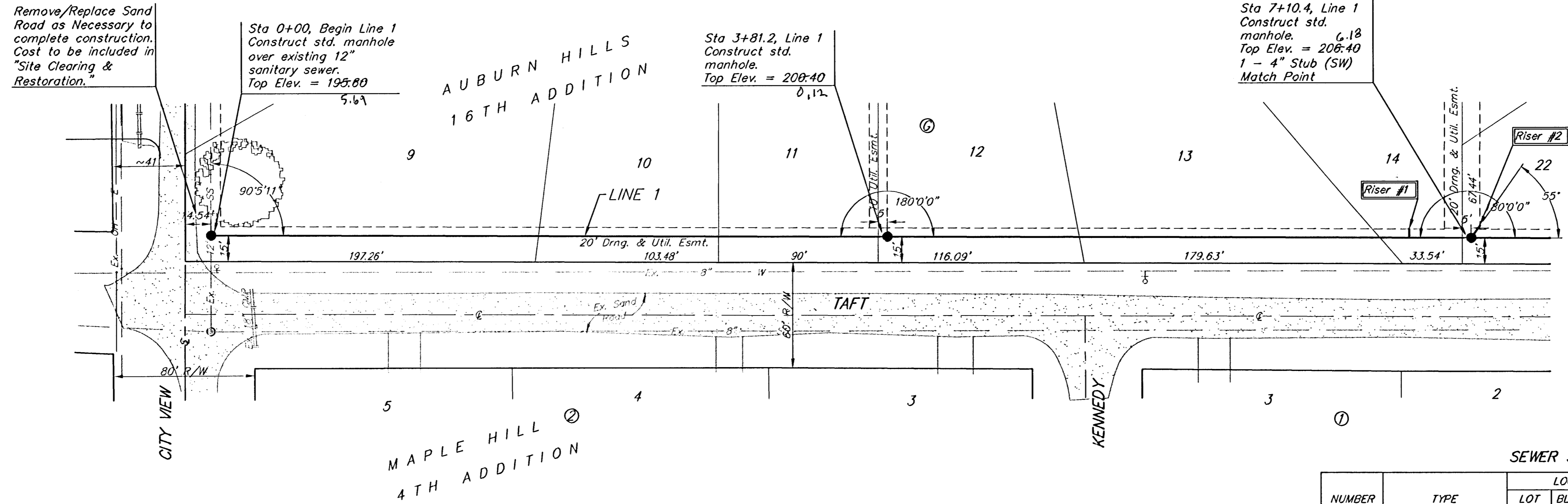
BM #3: "D" Cut in Middle of Curb Inlet Top Adjacent to the South Corner of Lot 15, Block B. Elev. = 193.65 (City Datum)

Remove/Replace Sand Road as Necessary to complete construction. Cost to be included in "Site Clearing & Restoration."

Sta 0+00, Begin Line 1 Construct std. manhole over existing 12" sanitary sewer. Top Elev. = 195.80

Sta 3+81.2, Line 1 Construct std. manhole. Top Elev. = 200.40

Sta 7+10.4, Line 1 Construct std. manhole. Top Elev. = 206.40 1 - 4" Stub (SW) Match Point



Scale: 1" = 40' Horizontal
 1" = 5' Vertical
 • = Iron

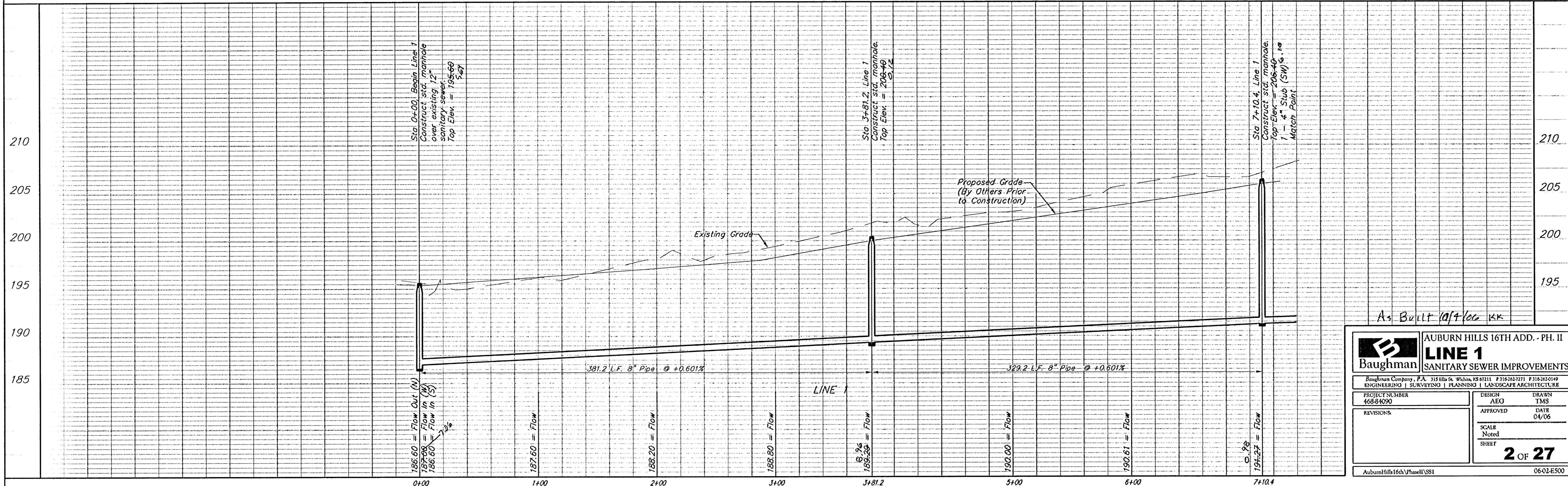
Contractor to Verify Depth & Location of Existing 8" Sewer Line Prior to Construction.

Remove trees only as necessary for sanitary sewer construction and only with permission of Developer or Baughman Co. Cost of removal to be incidental to lump sum bid item "Site Clearing & Restoration".

SEWER SERVICE TABLE

NUMBER	TYPE	LOCATION			FOR INFORMATION ONLY	
		LOT NO.	BLOCK NO.	LINE NO.	STATION \ DIRECTION	APPROXIMATE LENGTH 4" PIPE
1 ✓	8" X 4" Tee	14	G	1	6+74/Lt.	VERTICAL: 9.5' HORIZONTAL: 5'
2 ✓	4" Stub	22	G	1	7+10.4/Lt.	VERTICAL: 10.0' HORIZONTAL: 5'

NOTE: Vertical Riser Pipe shall be extended to 2' minimum above ground water elevation and 4' maximum below proposed ground elevation.



As Built (aft/06) KK

Baughman AUBURN HILLS 16TH ADD. - PH. II
LINE 1
 SANITARY SEWER IMPROVEMENTS

Baughman Company, P.A. 315 Ellis St. Wichita, KS 67211 P: 316-262-7271 F: 316-262-0149
 ENGINEERING | SURVEYING | PLANNING | LANDSCAPE ARCHITECTURE

PROJECT NUMBER 468-04090	DESIGN AEG	DRAWN TMS
REVISIONS:	APPROVED	DATE 04/06
SCALE Noted		SHEET
2 OF 27		

AuburnHills16thVPhaseII.SSI 0602.E500