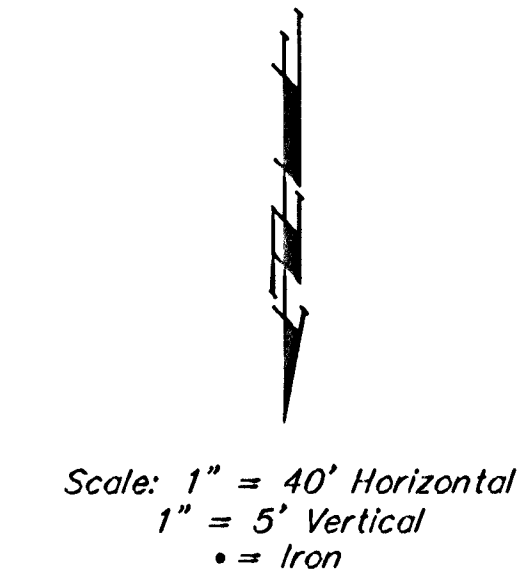
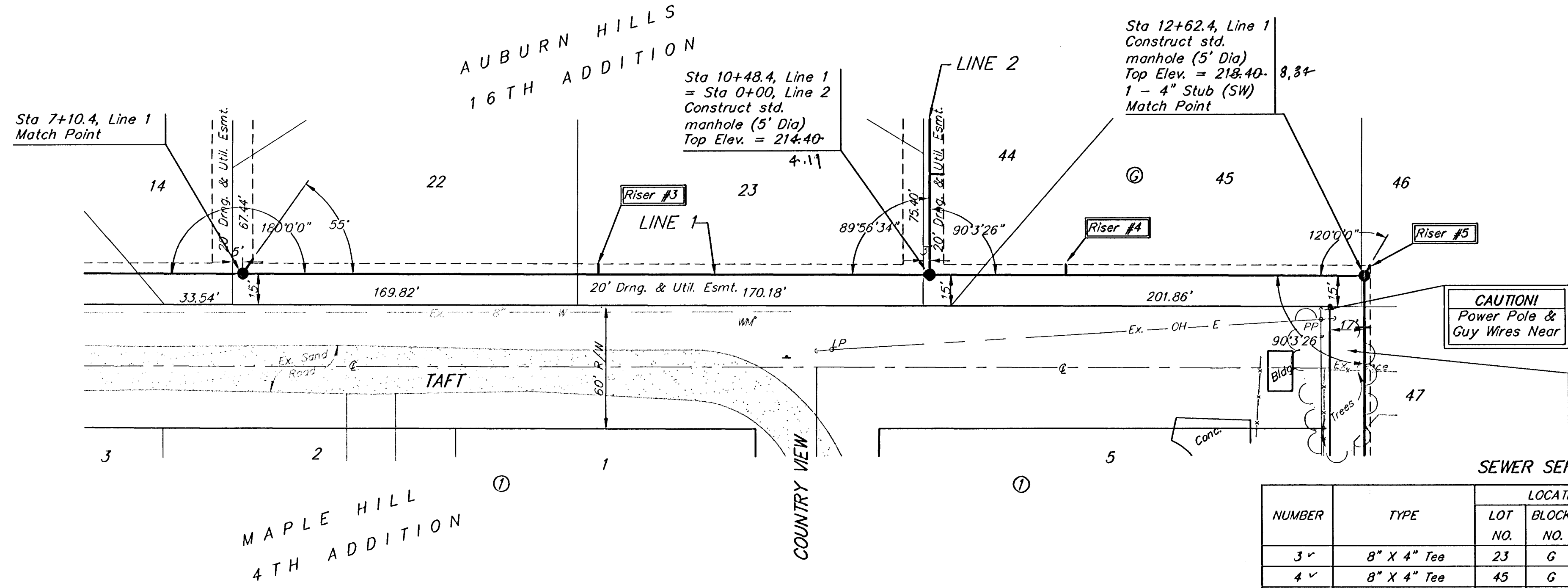


**BENCHMARKS:**

BM #1: "C" Cut on Top of Curb at West Line of Lot 7, Block A, Auburn Hills 5th Addition. Elev. = 207.73 (City Datum)

BM #2: Disc in Back of Curb, North of Front Corner Common to Lots 23 and 24, Block D, Auburn Hills 12th Addition. Elev. = 191.84 (City Datum)

BM #3: "C" Cut in Middle of Curb Inlet Top Adjacent to the South Corner of Lot 15, Block B. Elev. = 193.65 (City Datum)

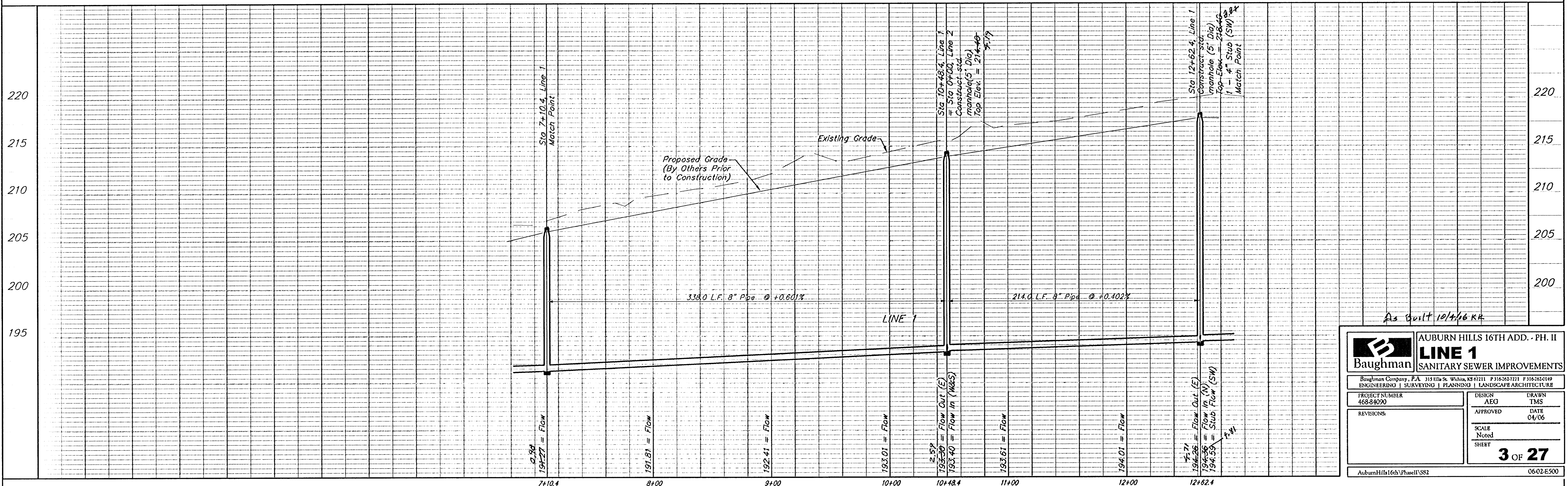


Remove trees only as necessary for sanitary sewer construction and only with permission of Developer or Baughman Co. Cost of removal to be incidental to lump sum bid item "Site Clearing & Restoration".

**SEWER SERVICE TABLE**

NUMBER	TYPE	LOCATION			FOR INFORMATION ONLY	
		LOT NO.	BLOCK NO.	LINE NO.	STATION\ DIRECTION	APPROXIMATE LENGTH 4" PIPE
3 <sup>v</sup>	8" X 4" Tee	23	G	1	8+85/Lt.	13.5' 5'
4 <sup>v</sup>	8" X 4" Tee	45	G	1	11+15/Lt.	17.5' 5'
5 <sup>v</sup>	4" Stub	46	G	1	12+58.7/Lt.	20.5' 5'

NOTE: Vertical Riser Pipes shall be extended to 2' minimum above ground water elevation and 4' maximum below proposed ground elevation.



As Built 10/1/16 K.K.

	AUBURN HILLS 16TH ADD. - PH. II	
	<b>LINE 1</b>	
SANITARY SEWER IMPROVEMENTS		
Baughman Company, P.A. 315 Ellis St. Wichita, KS 67211 P 316-263-7171 F 316-263-0149		
ENGINEERING   SURVEYING   PLANNING   LANDSCAPE ARCHITECTURE		
PROJECT NUMBER 468-8400	DESIGN AEO	DRAWN TMS
REVISIONS	APPROVED	DATE 04/06
	SCALE Noted	SHEET
		<b>3 OF 27</b>
AuburnHills16th/Phasel1/SS2		06-02-E500