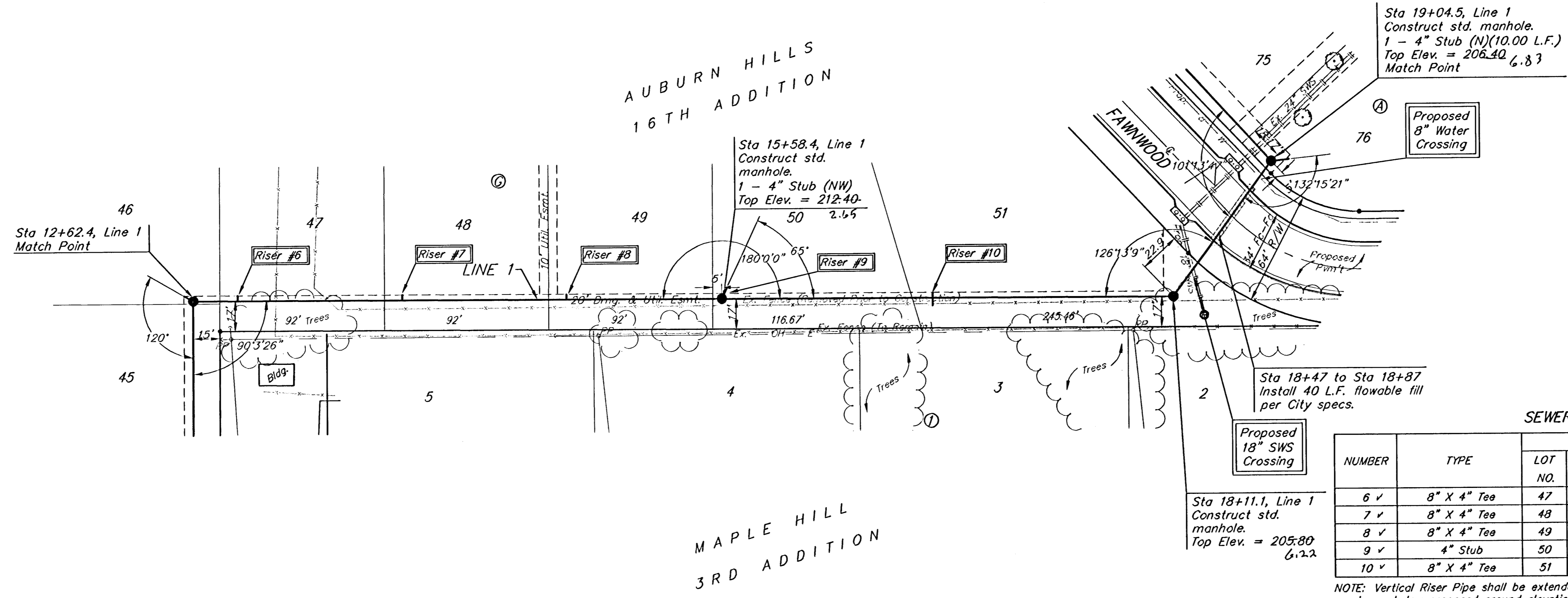
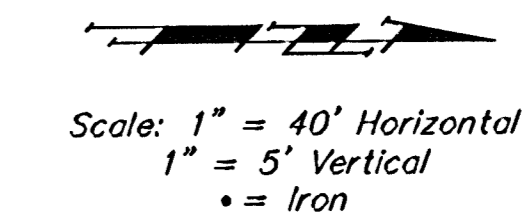


**BENCHMARKS:**

BM #1: "C" Cut on Top of Curb at West Line of Lot 7, Block A, Auburn Hills 5th Addition. Elev. = 207.73 (City Datum)

BM #2: Disc in Back of Curb, North of Front Corner Common to Lots 23 and 24, Block D, Auburn Hills 12th Addition. Elev. = 191.84 (City Datum)

BM #3: "C" Cut in Middle of Curb Inlet Top Adjacent to the South Corner of Lot 15, Block B. Elev. = 193.65 (City Datum)

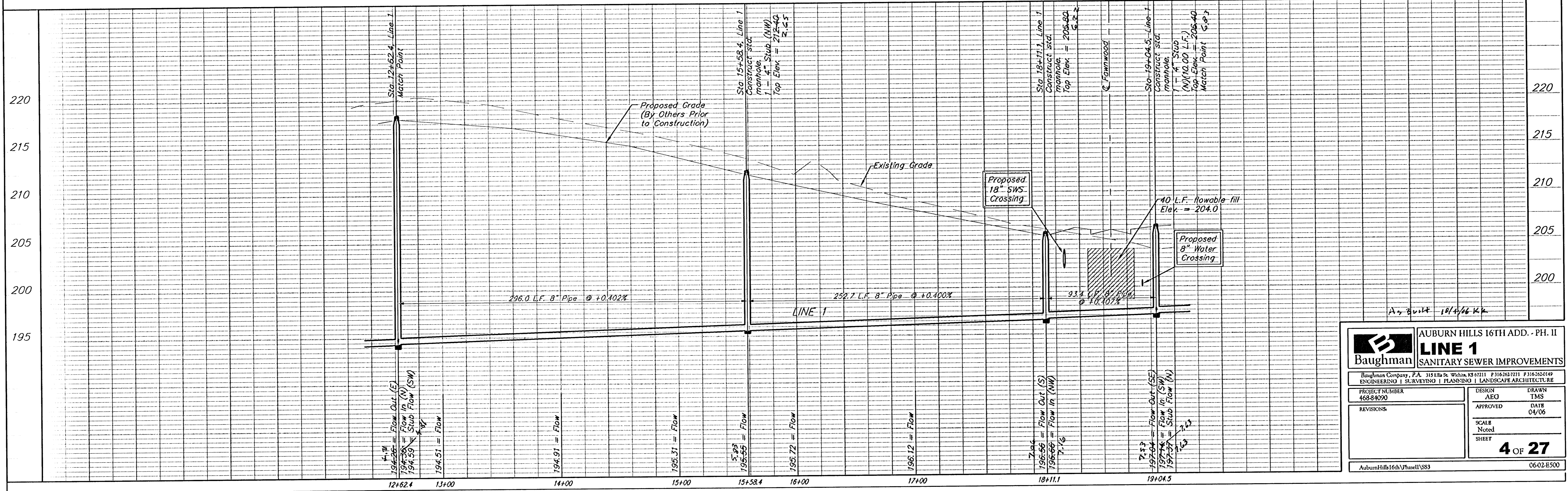


Remove trees only as necessary for sanitary sewer construction and only with permission of Developer or Baughman Co. Cost of removal to be incidental to lump sum bid item "Site Clearing & Restoration".

**SEWER SERVICE TABLE**

NUMBER	TYPE	LOCATION			FOR INFORMATION ONLY		
		LOT NO.	BLOCK NO.	LINE NO.	STATION DIRECTION	APPROXIMATE LENGTH 4" PIPE	
						VERTICAL	HORIZONTAL
6 ✓	8" X 4" Tee	47	G	1	12+84/Lt.	19.5'	5'
7 ✓	8" X 4" Tee	48	G	1	13+76/Lt.	18.0'	5'
8 ✓	8" X 4" Tee	49	G	1	14+68/Lt.	15.5'	5'
9 ✓	4" Stub	50	G	1	15+54.4/Lt.	12.5'	5'
10 ✓	8" X 4" Tee	51	G	1	16+72/Lt.	9.0'	5'

NOTE: Vertical Riser Pipe shall be extended to 2' minimum above ground water elevation and 4' maximum below proposed ground elevation.



**Baughman** ENGINEERING | SURVEYING | PLANNING | LANDSCAPE ARCHITECTURE

AUBURN HILLS 16TH ADD. - PH. II  
**LINE 1**  
SANITARY SEWER IMPROVEMENTS

PROJECT NUMBER: 468-84090  
DESIGN: AEO  
DRAWN: TMS

APPROVED: [Signature]  
DATE: 04/06

REVISIONS:

SCALE: Noted  
SHEET: **4 OF 27**

Auburn Hills 16th Phase II SSS 06-02-B500