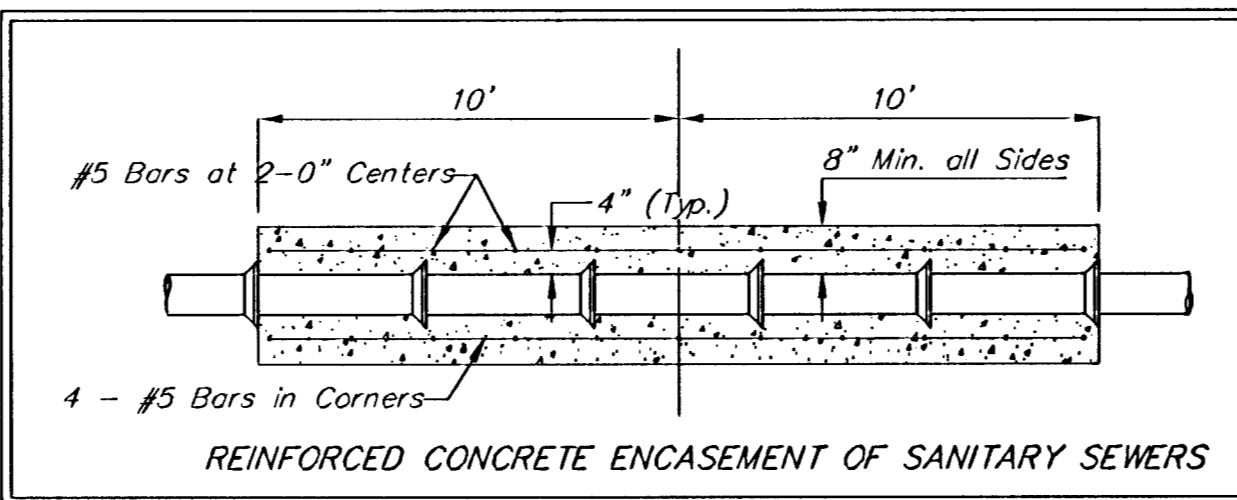
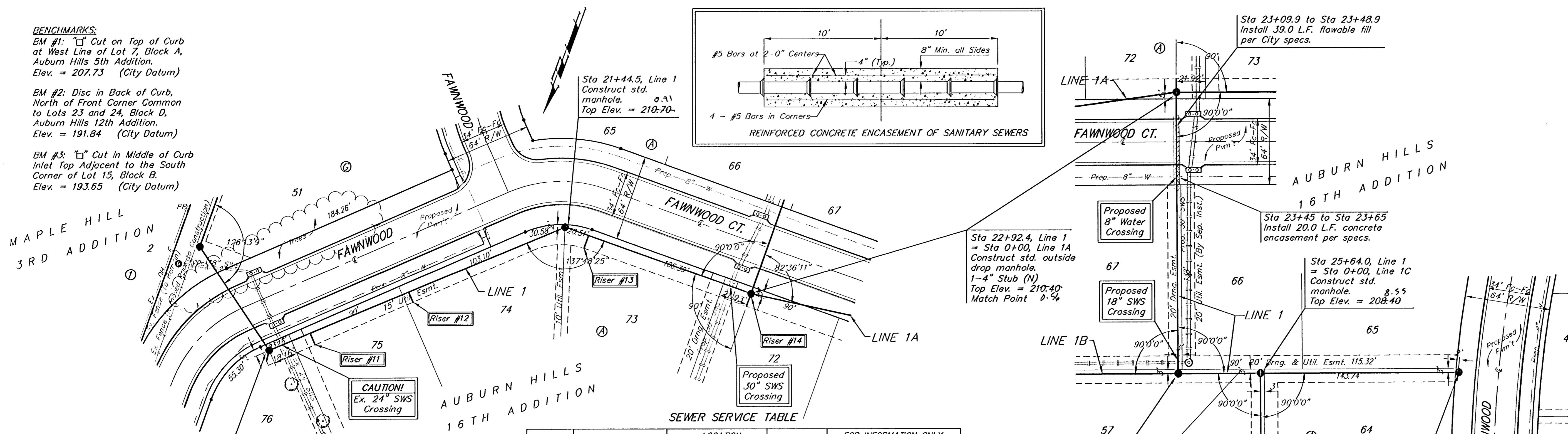


BENCHMARKS:
 BM #1: "C" Cut on Top of Curb at West Line of Lot 7, Block A, Auburn Hills 5th Addition. Elev. = 207.73 (City Datum)
 BM #2: Disc in Back of Curb, North of Front Corner Common to Lots 23 and 24, Block D, Auburn Hills 12th Addition. Elev. = 191.84 (City Datum)
 BM #3: "C" Cut in Middle of Curb Inlet Top Adjacent to the South Corner of Lot 15, Block B. Elev. = 193.65 (City Datum)



SEWER SERVICE TABLE

NUMBER	TYPE	LOCATION				FOR INFORMATION ONLY	
		LOT NO.	BLOCK NO.	LINE NO.	STATION \ DIRECTION	APPROXIMATE LENGTH 4" PIPE	
11 ✓	8" X 4" Tee	75	A	1	19+37.7/Rt.	7.0'	9.5'
12 ✓	8" X 4" Tee	74	A	1	20+17.7/Rt.	8.0'	8.5'
13 ✓	8" X 4" Tee	73	A	1	21+63.2/Rt.	9.0'	10'
14 ✓	4" Stub	72	A	1	22+92.4/Rt.	7.0'	10'

All trench and manhole excavation areas from Sta. 19+04.5 to Sta. 22+92.4, Line 1 shall be backfilled with sand. The sand backfill shall be within two feet of existing grade and shall be water-jetted and vibrated during backfilling. All costs shall be paid for as L.F. "Sand Backfill Jetted and Vibrated".

NOTE: Vertical Riser Pipe shall be extended to 2' minimum above ground water elevation and 4' maximum below proposed ground elevation.

Sta 22+92.4, Line 1 = Sta 0+00, Line 1A
 Construct std. outside drop manhole, 1-4" Stub (N)
 Top Elev. = 210.40
 Match Point 0.54

Sta 25+02.4, Line 1 = Sta 0+00, Line 1B
 Construct std. manhole.
 Top Elev. = 207.40

Sta 23+09.9 to Sta 23+48.9
 Install 39.0 L.F. flowable fill per City specs.

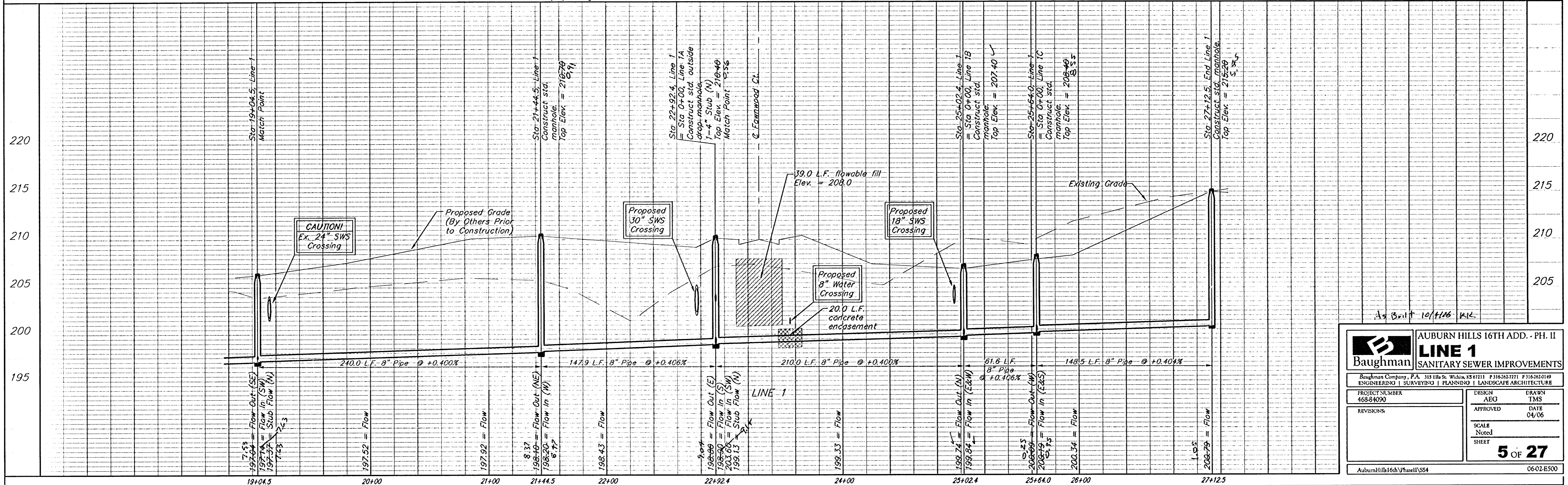
Sta 23+45 to Sta 23+65
 Install 20.0 L.F. concrete encasement per specs.

Sta 25+64.0, Line 1 = Sta 0+00, Line 1C
 Construct std. manhole, 8.55
 Top Elev. = 208.40

Sta 27+12.5, End Line 1
 Construct std. manhole.
 Top Elev. = 215.20
 5. + 5

Remove trees only as necessary for sanitary sewer construction and only with permission of Developer or Baughman Co. Cost of removal to be incidental to lump sum bid item "Site Clearing & Restoration".

Scale: 1" = 40' Horizontal
 1" = 5' Vertical
 • = Iron



Baughman AUBURN HILLS 16TH ADD. - PH. II
LINE 1
 SANITARY SEWER IMPROVEMENTS

PROJECT NUMBER: 468-84090
 DESIGN: AEG
 DRAWN: TMS
 APPROVED: DATE: 04/06
 SCALE: Noted
 SHEET: 5 OF 27

AuburnHills16thPhaseIISS4 06-02-E500