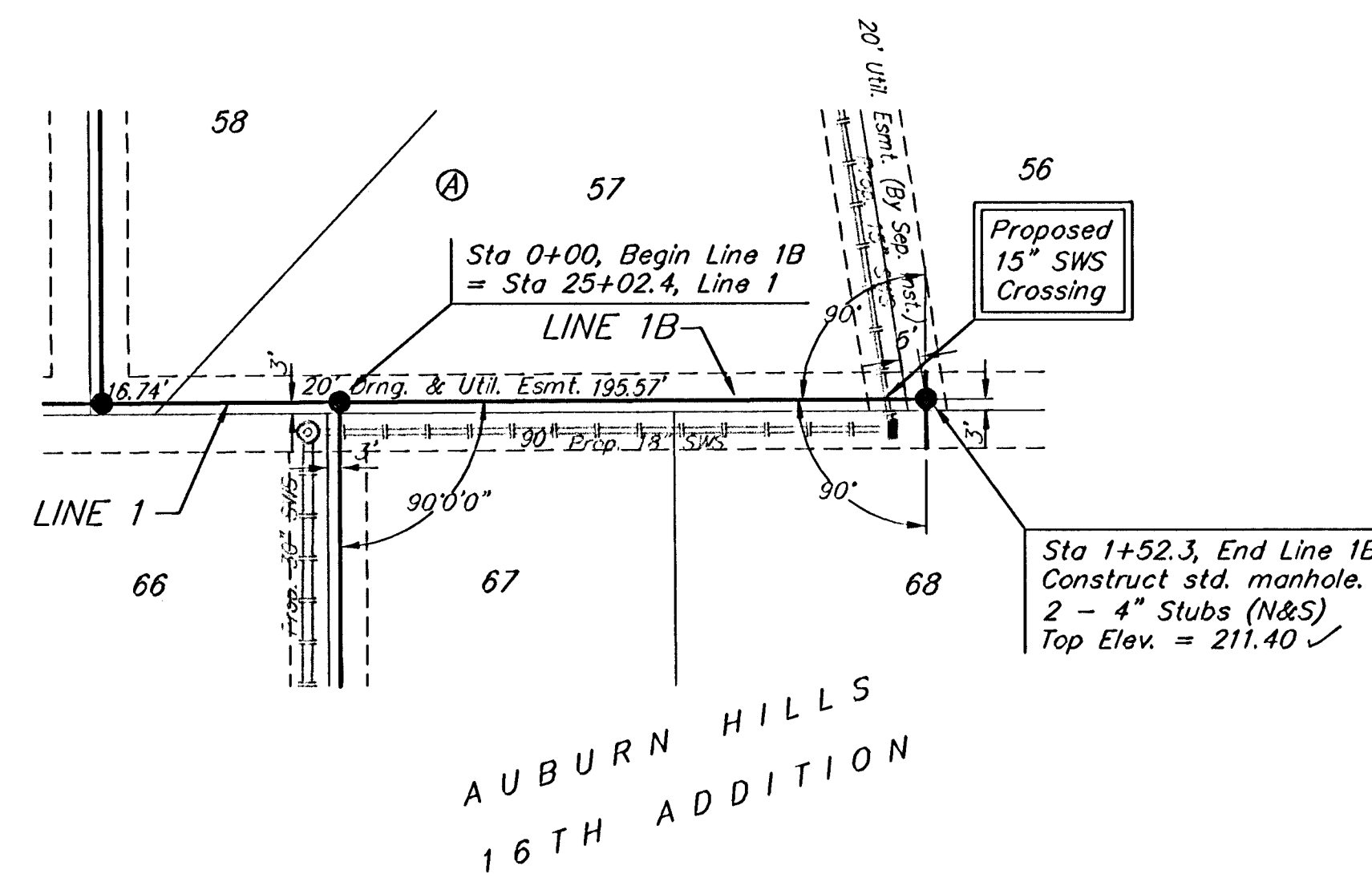
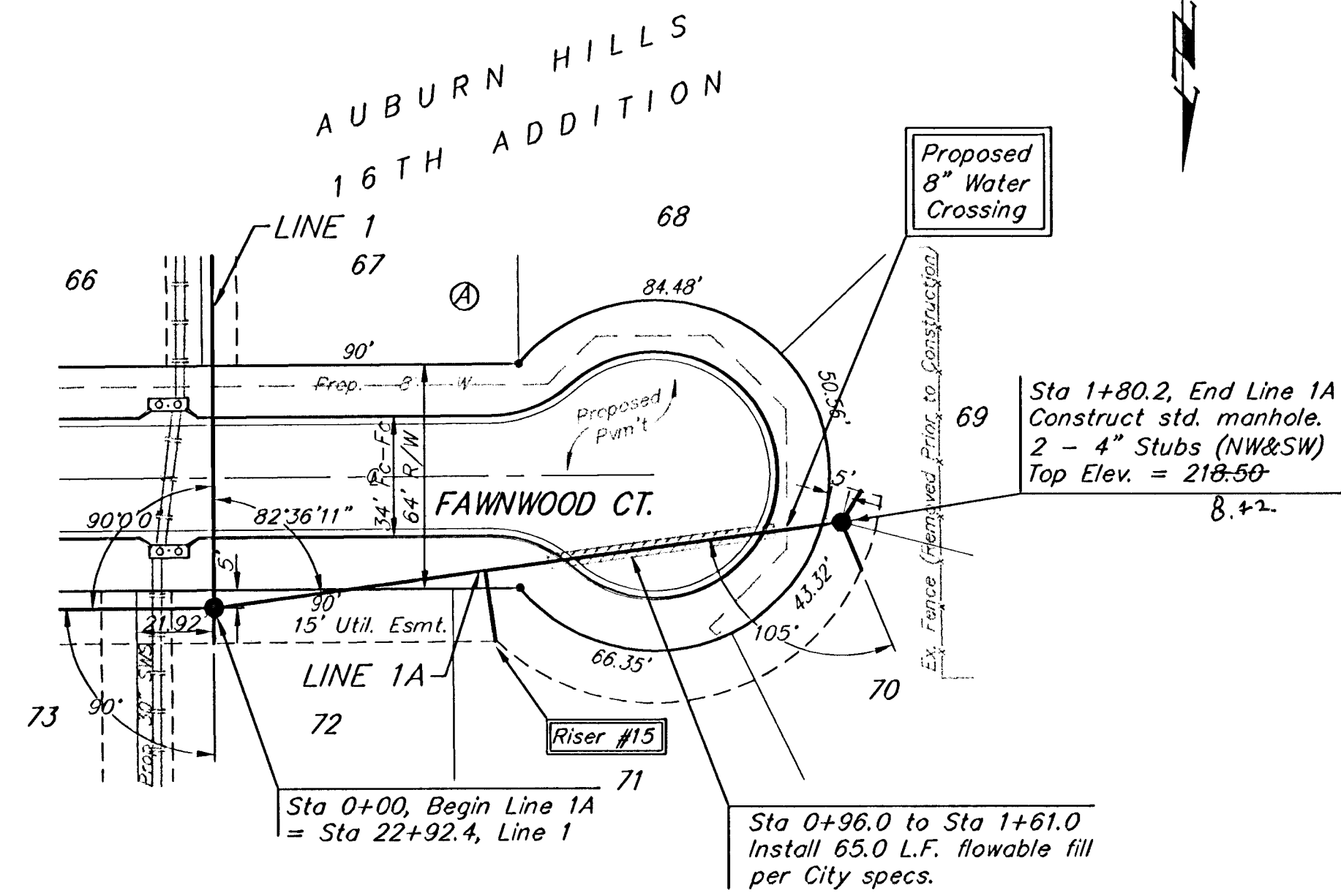


BENCHMARKS:
 BM #1: "C" Cut on Top of Curb at West Line of Lot 7, Block A, Auburn Hills 5th Addition. Elev. = 207.73 (City Datum)

BM #2: Disc in Back of Curb, North of Front Corner Common to Lots 23 and 24, Block D, Auburn Hills 12th Addition. Elev. = 191.84 (City Datum)

BM #3: "C" Cut in Middle of Curb Inlet Top Adjacent to the South Corner of Lot 15, Block B. Elev. = 193.65 (City Datum)



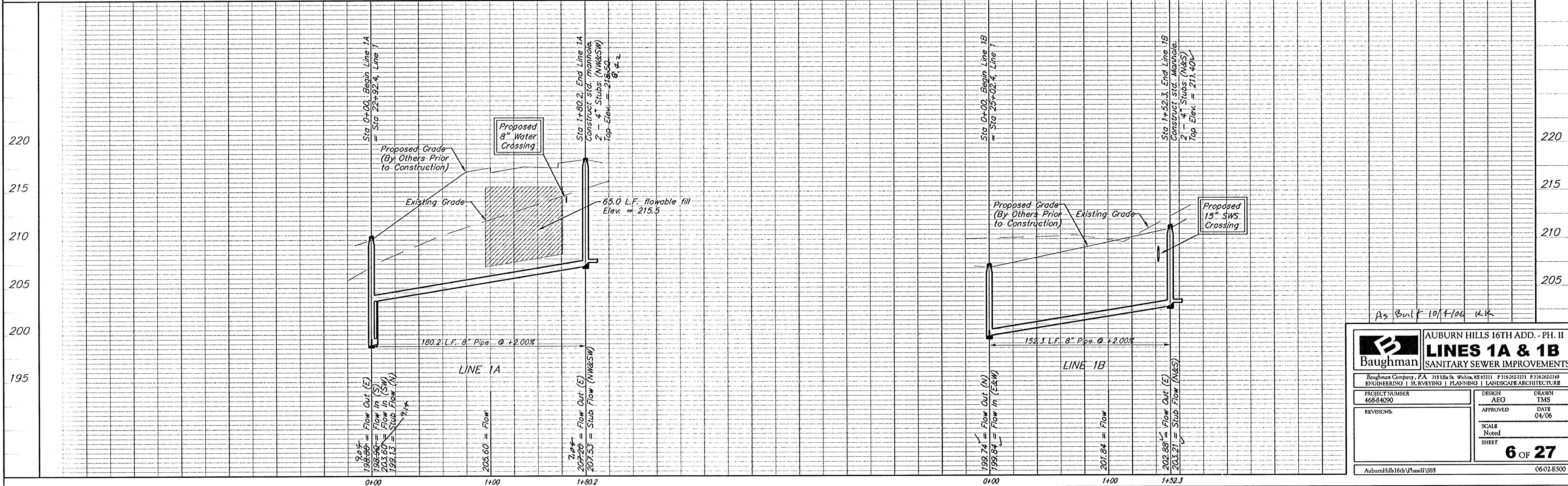
Scale: 1" = 40' Horizontal
 1" = 5' Vertical
 • = Iron

All trench and manhole excavation areas from Sta. 0+00 to Sta. 1+80.2, Line 1A shall be backfilled with sand, except the portion under the pavement. The sand backfill shall be within two feet of existing grade and shall be water-jetted and vibrated during backfilling. All costs shall be paid for as L.F. "Sand Backfill Jetted and Vibrated".

NUMBER	TYPE	LOCATION				FOR INFORMATION ONLY	
		LOT NO.	BLOCK NO.	LINE NO.	STATION DIRECTION	APPROXIMATE LENGTH 4" PIPE	VERTICAL
15 ✓	8" X 4" Tee	71	A	1A	0+78/RT.	10.0'	20'

NOTE: Vertical Riser Pipe shall be extended to 2' minimum above ground water elevation and 4' maximum below proposed ground elevation.

Remove trees only as necessary for sanitary sewer construction and only with permission of Developer or Baughman Co. Cost of removal to be incidental to lump sum bid item "Site Clearing & Restoration".



As Built 10/4/06 LK

Baughman		AUBURN HILLS 16TH ADD. - PH. II	
		LINE 1A & 1B	
		SANITARY SEWER IMPROVEMENTS	
Baughman Company, P.A. 315 Elm St., Warren, PA 15081 F315262711 F316262149			
ENGINEERING SURVEYING PLANNING LANDSCAPE ARCHITECTURE			
PROJECT NUMBER 468-84090	DESIGN AEG	DRAWN TMS	
REVISIONS:	APPROVED	DATE 04/06	
	SCALE Noted		
	SHEET		
			6 OF 27
AuburnHills16th\PhaseII\SS5		0602E500	