

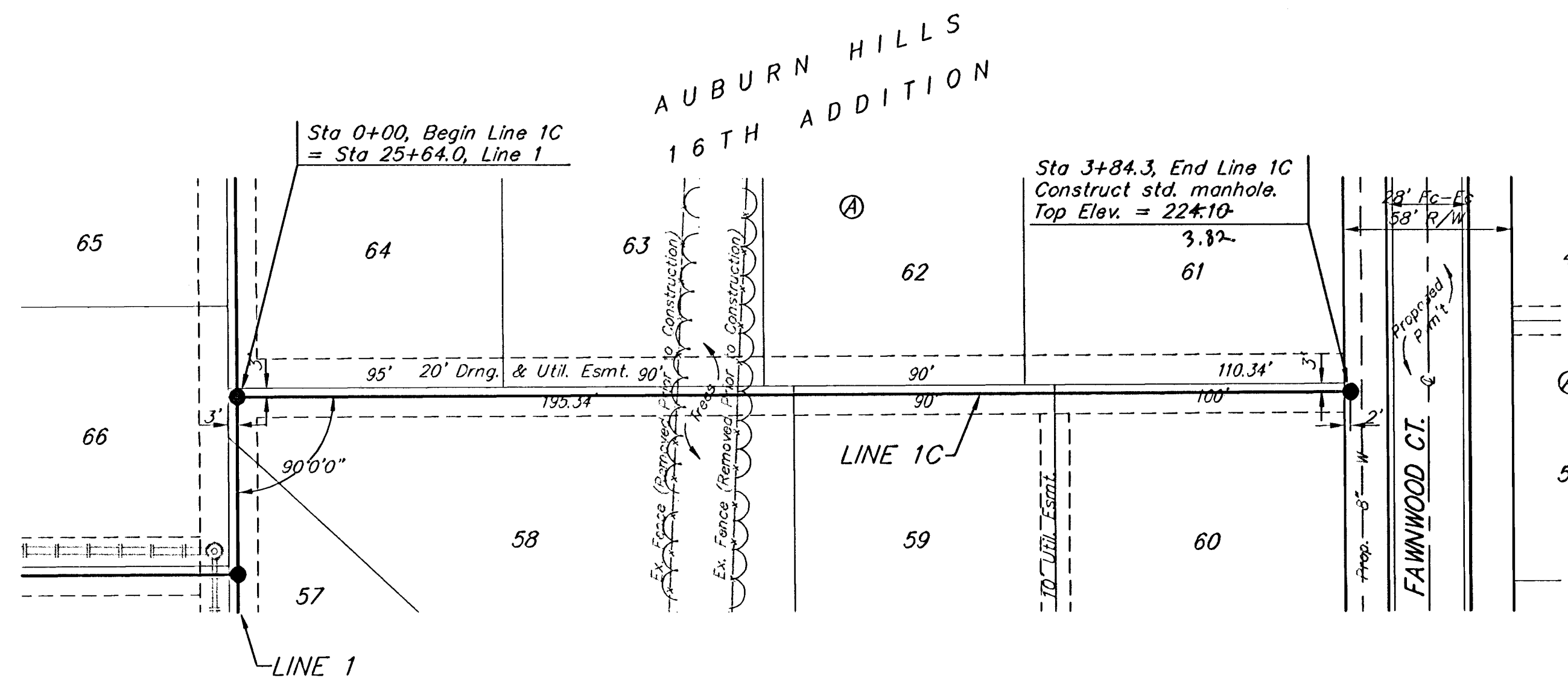
**BENCHMARKS:**

BM #1: "I" Cut on Top of Curb at West Line of Lot 7, Block A, Auburn Hills 5th Addition.  
Elev. = 207.73 (City Datum)

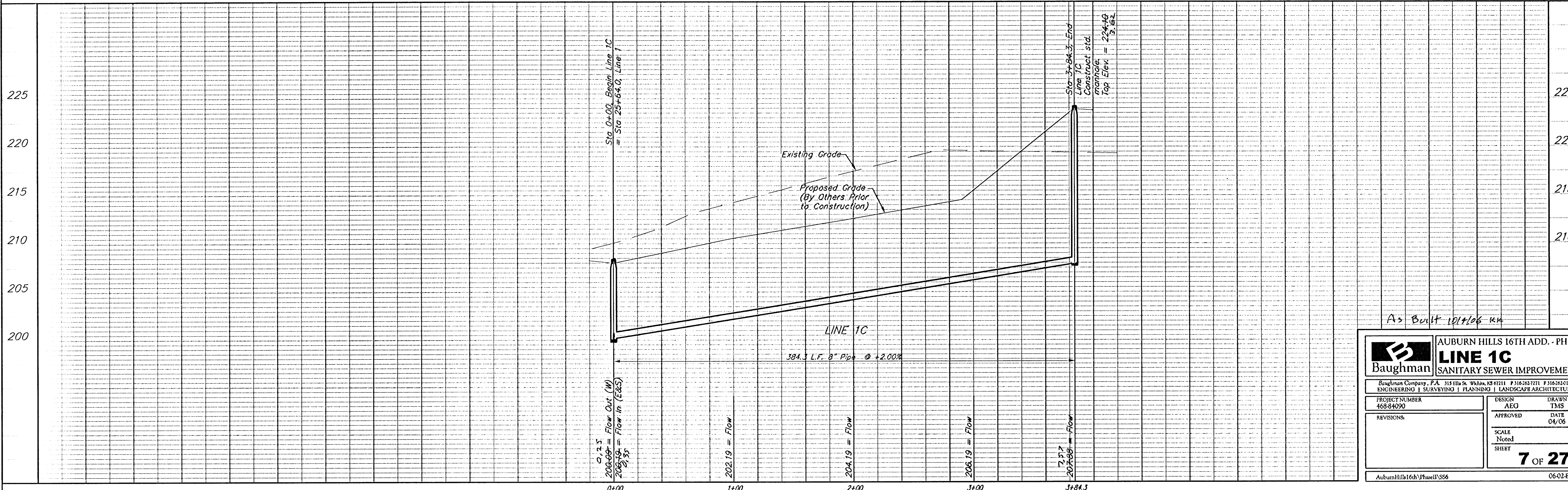
BM #2: Disc in Back of Curb, North of Front Corner Common to Lots 23 and 24, Block D, Auburn Hills 12th Addition.  
Elev. = 191.84 (City Datum)

BM #3: "I" Cut in Middle of Curb Inlet Top Adjacent to the South Corner of Lot 15, Block B.  
Elev. = 193.65 (City Datum)

Scale: 1" = 40' Horizontal  
1" = 5' Vertical  
• = Iron



Remove trees only as necessary for sanitary sewer construction and only with permission of Developer or Baughman Co. Cost of removal to be incidental to lump sum bid item "Site Clearing & Restoration".



As Built 10/1/06 KM

		AUBURN HILLS 16TH ADD. - PH. II <b>LINE 1C</b> SANITARY SEWER IMPROVEMENTS	
<small>Baughman Company, P.A. 315 Ellis St. Wyand, MI 48191 P 313-262-7271 F 313-262-0149                  ENGINEERING   SURVEYING   PLANNING   LANDSCAPE ARCHITECTURE</small>			
PROJECT NUMBER 468-84090	DESIGN AEO	DRAWN TMS	
REVISIONS	APPROVED	DATE 04/06	
SCALE Noted		SHEET <b>7 OF 27</b>	
<small>AuburnHills16thVPhaseIISS6</small>		<small>06-02-E500</small>	