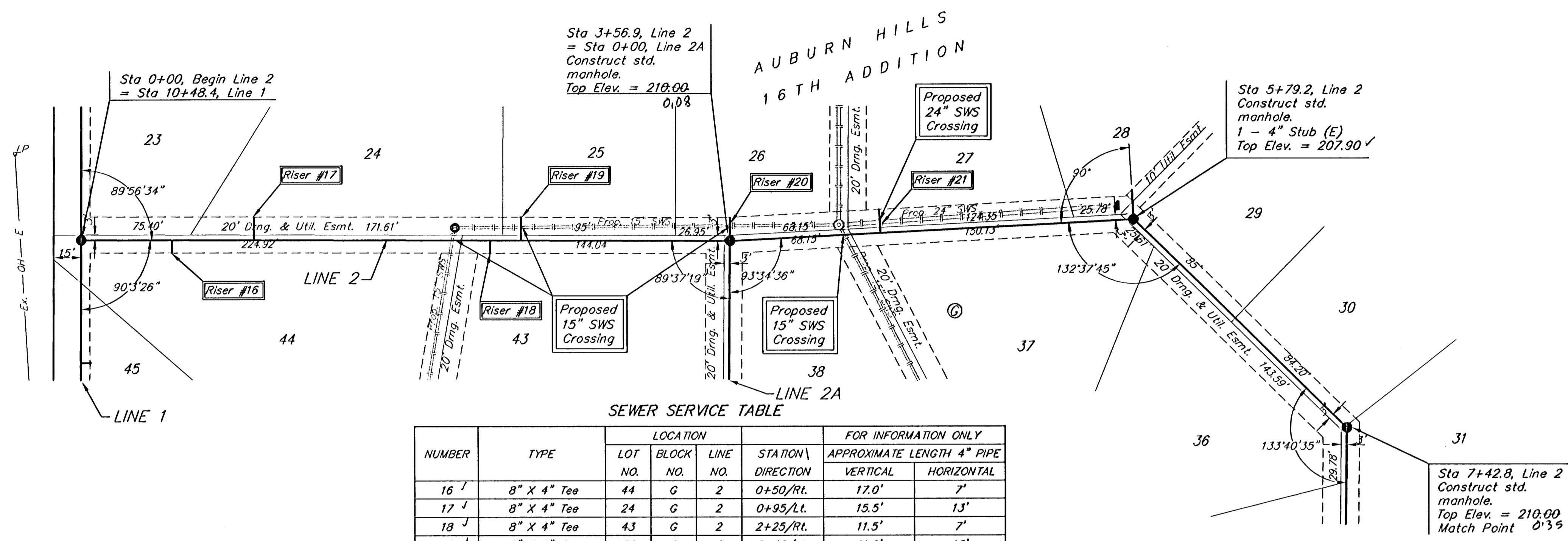


BENCHMARKS:
 BM #1: "Cut on Top of Curb at West Line of Lot 7, Block A, Auburn Hills 5th Addition. Elev. = 207.73 (City Datum)

BM #2: Disc in Back of Curb, North of Front Corner Common to Lots 23 and 24, Block D, Auburn Hills 12th Addition. Elev. = 191.84 (City Datum)

BM #3: "Cut in Middle of Curb Inlet Top Adjacent to the South Corner of Lot 15, Block B. Elev. = 193.65 (City Datum)

Scale: 1" = 40' Horizontal
 1" = 5' Vertical
 • = Iron

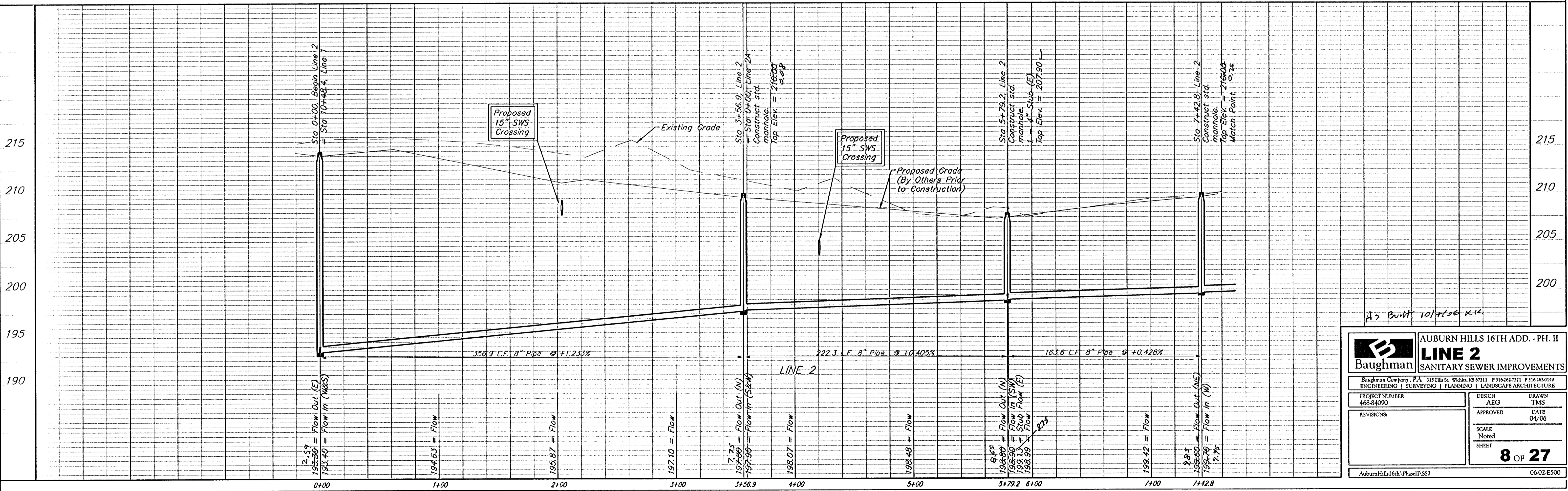


SEWER SERVICE TABLE

NUMBER	TYPE	LOCATION			FOR INFORMATION ONLY	
		LOT NO.	BLOCK NO.	LINE NO.	STATION DIRECTION	APPROXIMATE LENGTH 4" PIPE
16	8" X 4" Tee	44	G	2	0+50/Rt.	VERTICAL: 17.0' HORIZONTAL: 7'
17	8" X 4" Tee	24	G	2	0+95/Lt.	VERTICAL: 15.5' HORIZONTAL: 13'
18	8" X 4" Tee	43	G	2	2+25/Rt.	VERTICAL: 11.5' HORIZONTAL: 7'
19	8" X 4" Tee	25	G	2	2+42/Lt.	VERTICAL: 11.0' HORIZONTAL: 13'
20	4" Stub	26	G	2	3+56.9/Lt.	VERTICAL: 8.5' HORIZONTAL: 13'
21	8" X 4" Tee	27	G	2	4+40/Lt.	VERTICAL: 6.5' HORIZONTAL: 13'

NOTE: Vertical Riser Pipe shall be extended to 2' minimum above ground water elevation and 4' maximum below proposed ground elevation.

Remove trees only as necessary for sanitary sewer construction and only with permission of Developer or Baughman Co. Cost of removal to be incidental to lump sum bid item "Site Clearing & Restoration".



Baughman AUBURN HILLS 16TH ADD. - PH. II
LINE 2
 SANITARY SEWER IMPROVEMENTS

PROJECT NUMBER: 468-84000
 DESIGN: AEG
 DRAWN: TMS
 APPROVED: [Signature]
 DATE: 04/06

REVISIONS:

SCALE: Noted
 SHEET: **8 OF 27**

AuburnHills16thPhaseIUSST 06-02-E500