

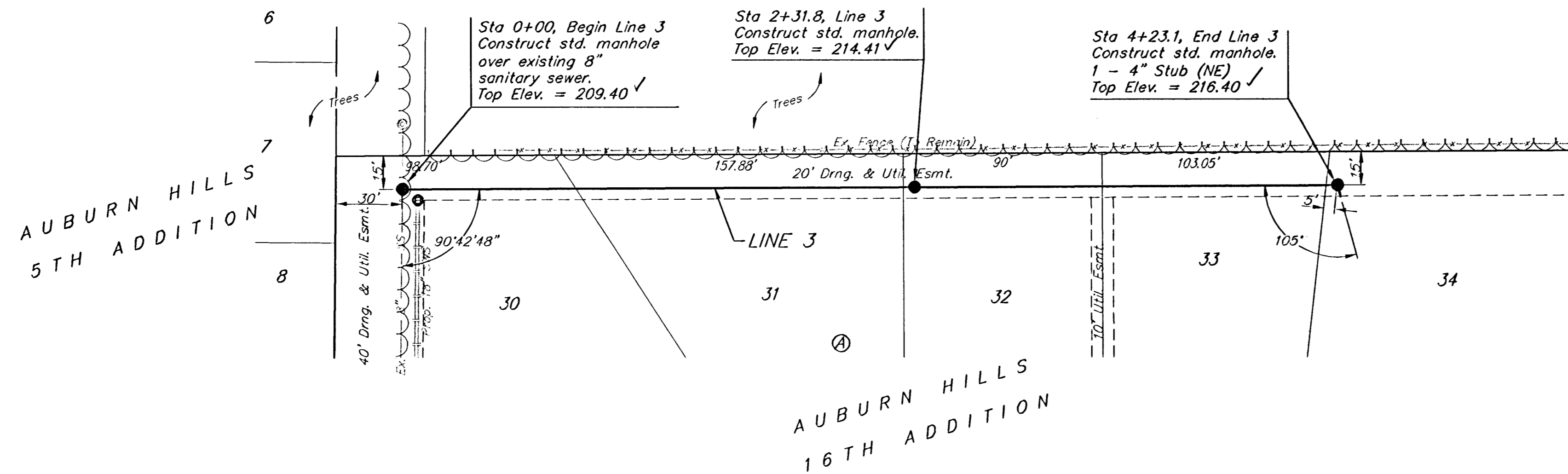
BENCHMARKS:

BM #1: "I" Cut on Top of Curb at West Line of Lot 7, Block A, Auburn Hills 5th Addition. Elev. = 207.73 (City Datum)

BM #2: Disc in Back of Curb, North of Front Corner Common to Lots 23 and 24, Block D, Auburn Hills 12th Addition. Elev. = 191.84 (City Datum)

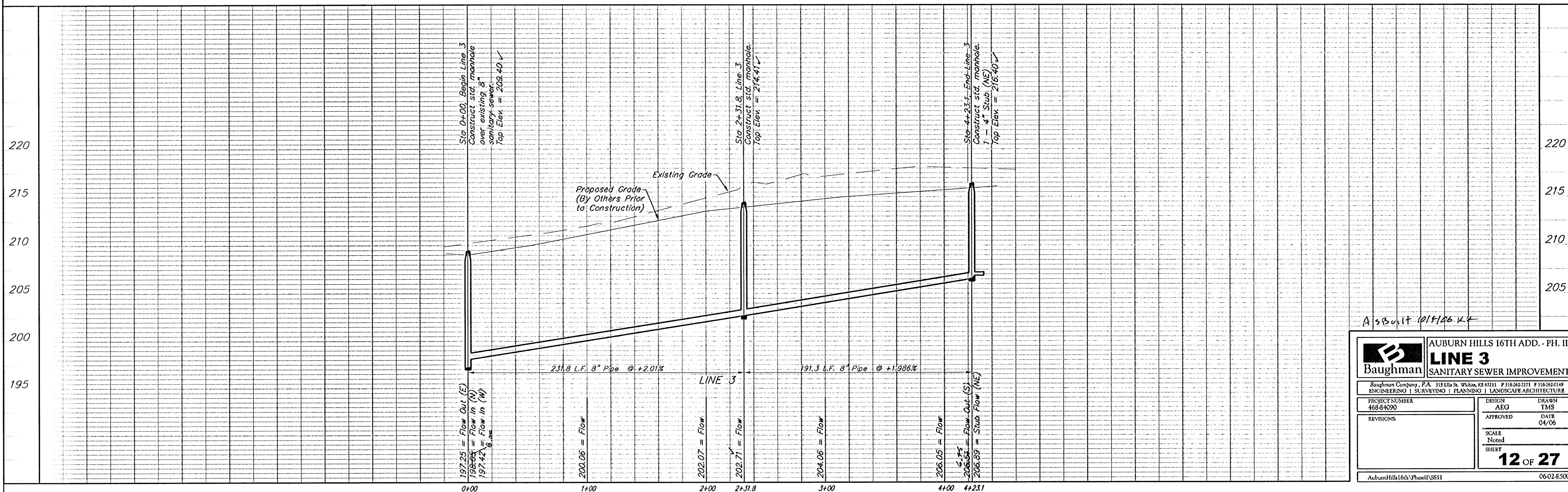
BM #3: "I" Cut in Middle of Curb Inlet Top Adjacent to the South Corner of Lot 15, Block B. Elev. = 193.65 (City Datum)

Scale: 1" = 40' Horizontal
1" = 5' Vertical
• = Iron



Contractor to Verify Depth & Location of Existing 8" Sewer Line Prior to Construction.

Remove trees only as necessary for sanitary sewer construction and only with permission of Developer or Baughman Co. Cost of removal to be incidental to lump sum bid item "Site Clearing & Restoration".



A3Bult 12/1/06 KL

		AUBURN HILLS 16TH ADD. - PH. II LINE 3 SANITARY SEWER IMPROVEMENTS	
<small>Baughman Company, P.A. 315 E. 11th St., White, KS 67111 P 316-282-7271 F 316-282-0149 ENGINEERING SURVEYING PLANNING LANDSCAPE ARCHITECTURE</small>			
PROJECT NUMBER 458-B-020	DESIGN AEG	DRAWN TMS	DATE 04/06
REVISIONS	APPROVED	SCALE Noted	SHEET 12 OF 27
<small>AuburnHills16thPhaseII_VSS11</small>		<small>0602-E500</small>	