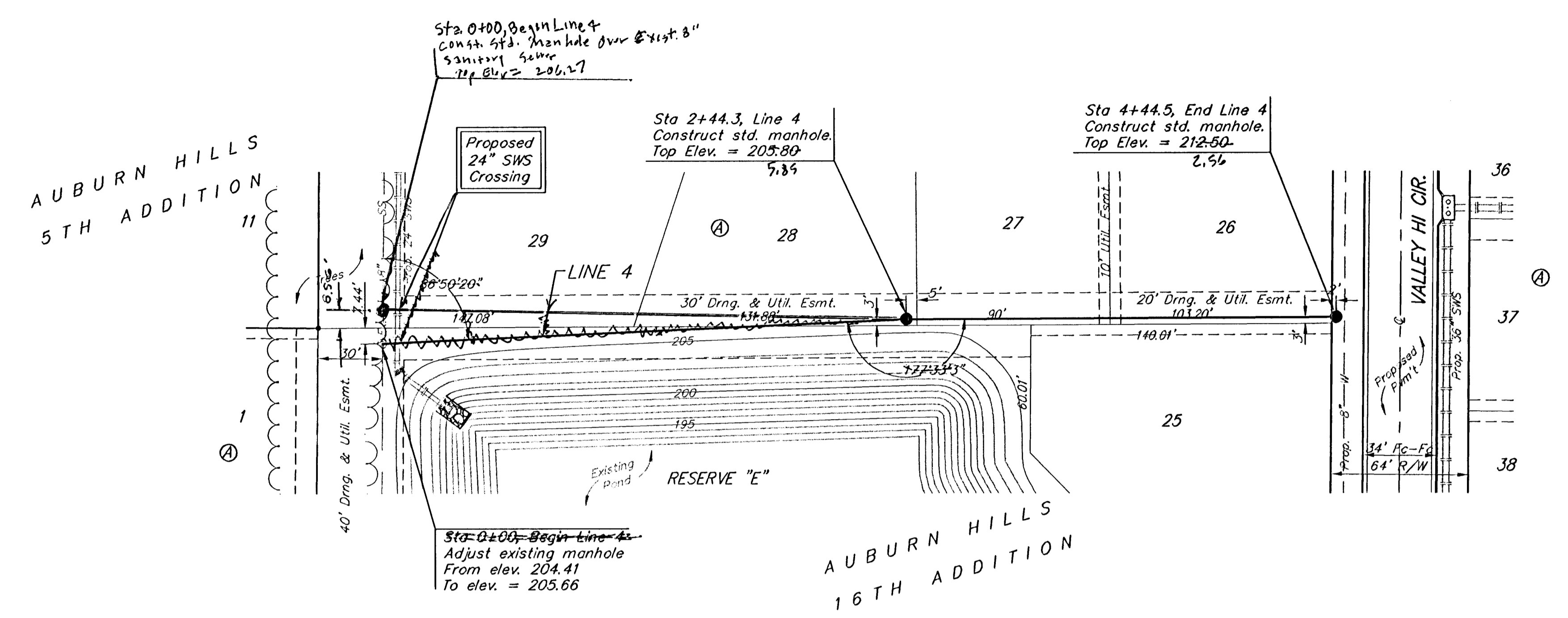


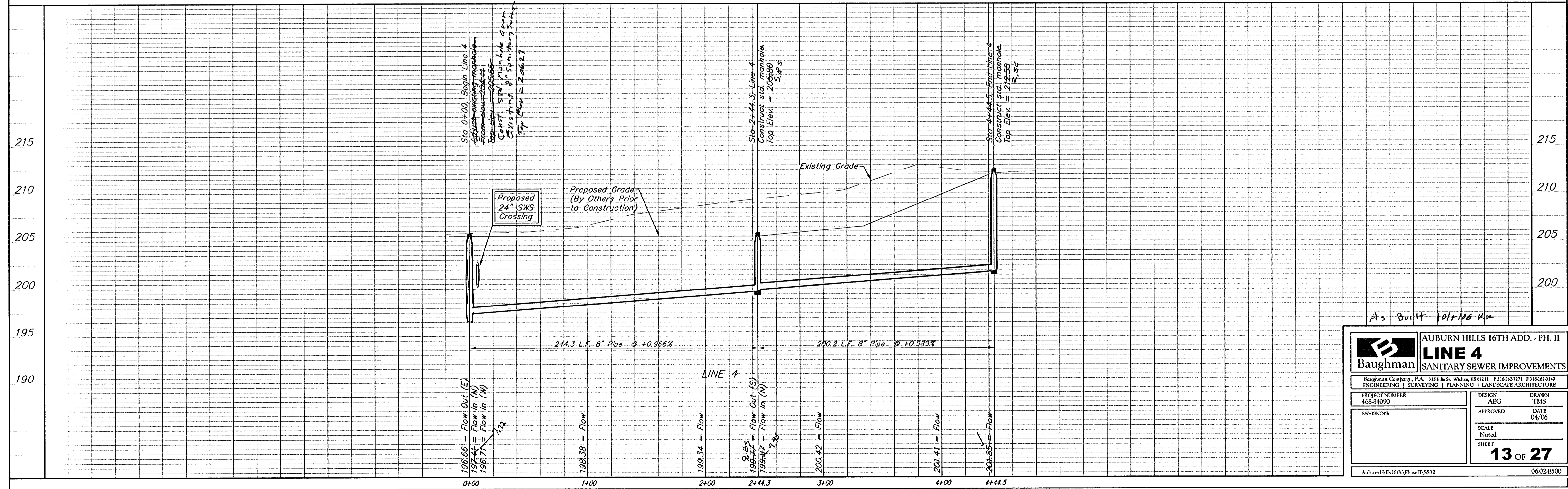
BENCHMARKS:
 BM #1: "C" Cut on Top of Curb at West Line of Lot 7, Block A, Auburn Hills 5th Addition. Elev. = 207.73 (City Datum)
 BM #2: Disc in Back of Curb, North of Front Corner Common to Lots 23 and 24, Block D, Auburn Hills 12th Addition. Elev. = 191.84 (City Datum)
 BM #3: "E" Cut in Middle of Curb Inlet Top Adjacent to the South Corner of Lot 15, Block B. Elev. = 193.65 (City Datum)

Scale: 1" = 40' Horizontal
 1" = 5' Vertical
 • = Iron



Contractor to Verify Depth & Location of Existing 8" Sewer Line Prior to Construction.

Remove trees only as necessary for sanitary sewer construction and only with permission of Developer or Baughman Co. Cost of removal to be incidental to lump sum bid item "Site Clearing & Restoration".



As Built 10/1/06 KJK

Baughman		AUBURN HILLS 16TH ADD. - PH. II	
		LINE 4	
		SANITARY SEWER IMPROVEMENTS	
Baughman Company, P.A. 315 E. St. W. Suite 8507111, P.O. Box 100000, Raleigh, NC 27602-0000 ENGINEERING & SURVEYING PLANNING LANDSCAPE ARCHITECTURE			
PROJECT NUMBER 468-84090	DESIGN AEG	DRAWN TMS	APPROVED DATE 04/06
REVISIONS:	SCALE Noted SHEET		
	13 OF 27		
AuburnHills16thPH2II SS12		0602.E500	