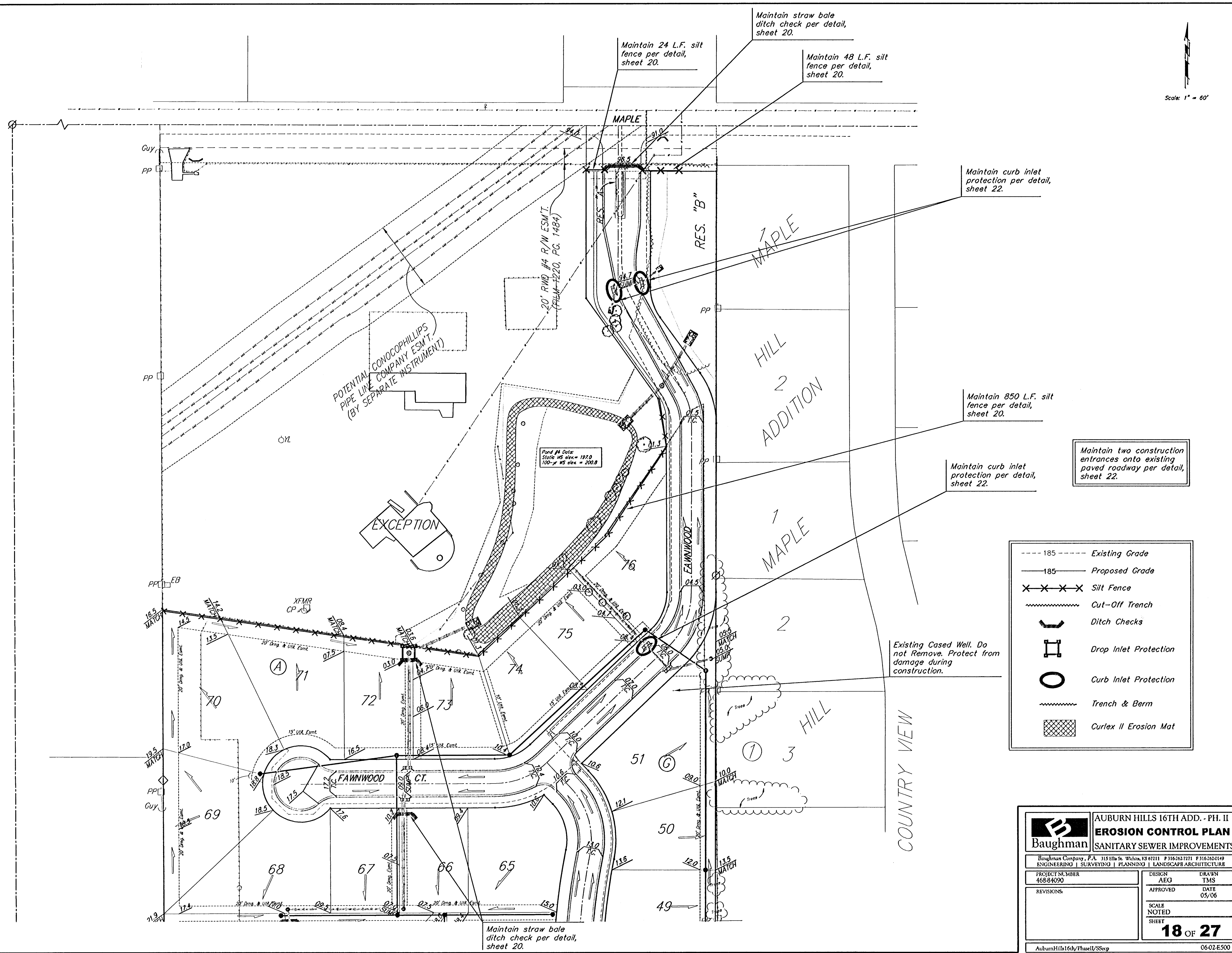


**BENCHMARKS:**  
 BM #1: "I" Cut on Top of Curb at West Line of Lot 7, Block A, Auburn Hills 5th Addition. Elev. = 207.73 (City Datum)  
 BM #2: Disc in Back of Curb, North of Front Corner Common to Lots 23 and 24, Block D, Auburn Hills 12th Addition. Elev. = 191.84 (City Datum)  
 BM #3: "I" Cut in Middle of Curb Inlet Top Adjacent to the South Corner of Lot 15, Block B. Elev. = 193.65 (City Datum)

Scale: 1" = 60'



Remove trees only as necessary for sanitary sewer construction and only with permission of Developer or Baughman Co. Cost of removal to be incidental to lump sum bid item "Site Clearing & Restoration".

NOTE: Contractor shall remove & replace existing erosion control measures as necessary for construction. Cost incidental to "Site Clearing and Restoration." Contractor shall be required to maintain all on-site erosion control items until final acceptance by the City of Wichita.

|             |                       |
|-------------|-----------------------|
| --- 185 --- | Existing Grade        |
| — 185 —     | Proposed Grade        |
| X X X X     | Silt Fence            |
| ~~~~~       | Cut-Off Trench        |
| U           | Ditch Checks          |
| H           | Drop Inlet Protection |
| O           | Curb Inlet Protection |
| ~~~~~       | Trench & Berm         |
| XXXX        | Curlex II Erosion Mat |

Existing Cased Well. Do not Remove. Protect from damage during construction.

|   |                                 |                          |
|---|---------------------------------|--------------------------|
|   | AUBURN HILLS 16TH ADD. - PH. II |                          |
|   | EROSION CONTROL PLAN            |                          |
| SANITARY SEWER IMPROVEMENTS   |                                 |                          |
| <small>Baughman Company, P.A. 113 E. 15th &amp; Walnut, KS 67211 P:316-262-7171 F:316-262-0149<br/>         ENGINEERING   SURVEYING   PLANNING   LANDSCAPE ARCHITECTURE</small> |                                 |                          |
| PROJECT NUMBER<br>468-84090   | DESIGN<br>AEG                   | DRAWN<br>TMS             |
| REVISIONS   | APPROVED                        | DATE<br>05/06            |
| SCALE<br>NOTED  |                                 | <b>18 OF 27</b><br>SHEET |
| AuburnHills16thPhaseII/SSep   |                                 |                          |