

BENCHMARKS:

BM #1: C.O.W. disc at SW corner of intersection.
30.00± S. of CL of 13th St. N.
35.00± W. of CL of 135th St. W.
Elev. = 168.25 City Datum

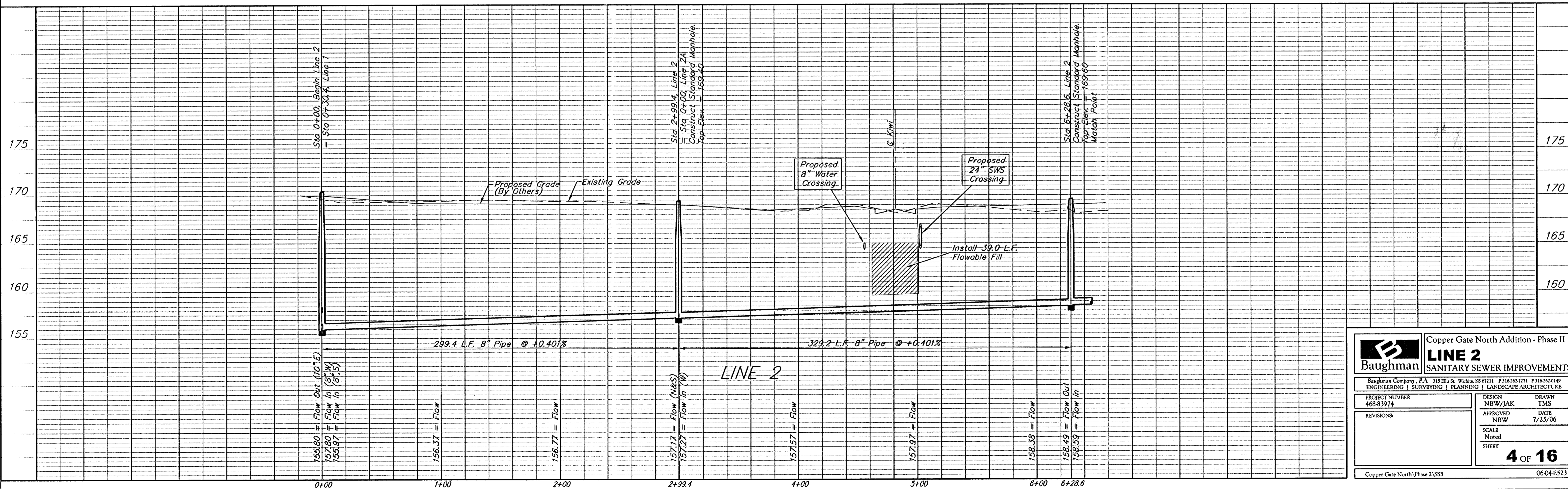
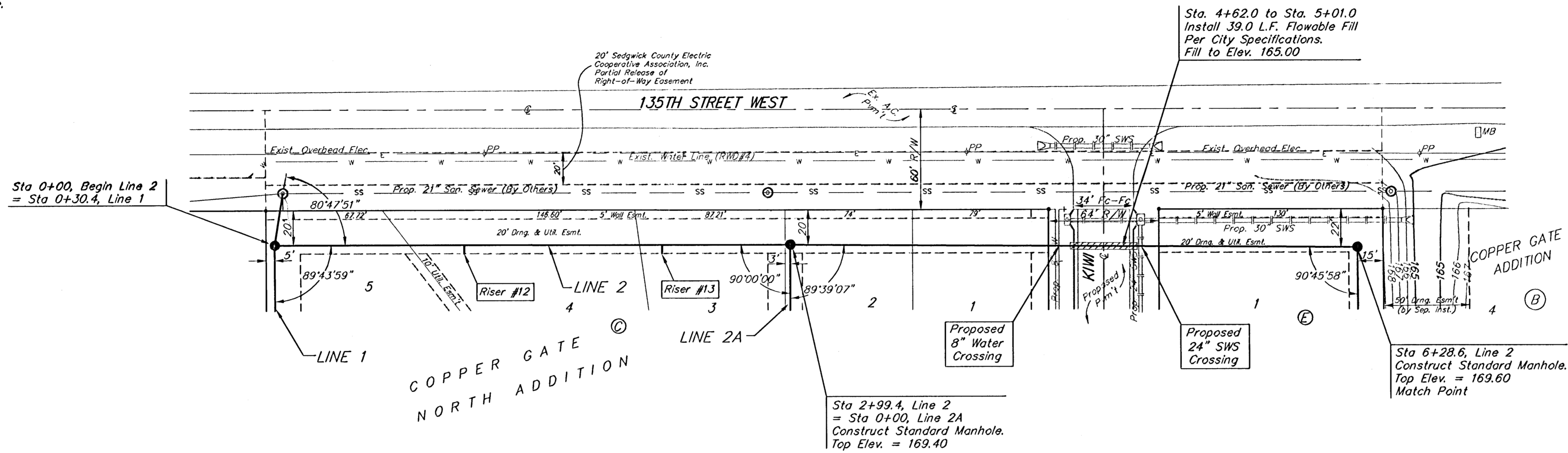
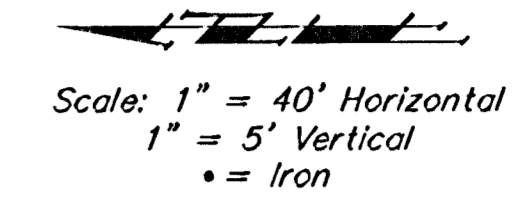
BM #2: Small RR spike in 4th HLP
W. of 135th St. W. on south side
of 13th St. N. (N. face of HLP).
Elev. = 179.24 City Datum

BM #3: RR spike in Power Pole.
1321.65 W. of 135th St. W.
30' N. of 13th St. N.
Elev. = 178.45 City Datum

SEWER SERVICE TABLE

NUMBER	TYPE	LOCATION			FOR INFORMATION ONLY	
		LOT NO.	BLOCK NO.	LINE NO.	STATION/DIRECTION	APPROXIMATE LENGTH 4" PIPE
12	8" X 4" Tee	4	C	2	1+10/Rt.	9.0'
13	8" X 4" Tee	3	C	2	2+25/Rt.	8.5'

NOTE: Vertical Riser Pipe shall be extended to 2' minimum above ground water elevation and 4' maximum below proposed ground elevation.



Baughman Copper Gate North Addition - Phase II

LINE 2
SANITARY SEWER IMPROVEMENTS

Baughman Company, P.A. 315 Ellis St. Wichita, KS 67211 P 316.263.7271 F 316.262.0149
ENGINEERING | SURVEYING | PLANNING | LANDSCAPE ARCHITECTURE

PROJECT NUMBER 468-83974	DESIGN NBW/JAK	DRAWN TMS
REVISIONS:	APPROVED NBW	DATE 1/25/06
SCALE Noted		4 OF 16 SHEET
Copper Gate North Phase 2/SS3		

06-04-E523