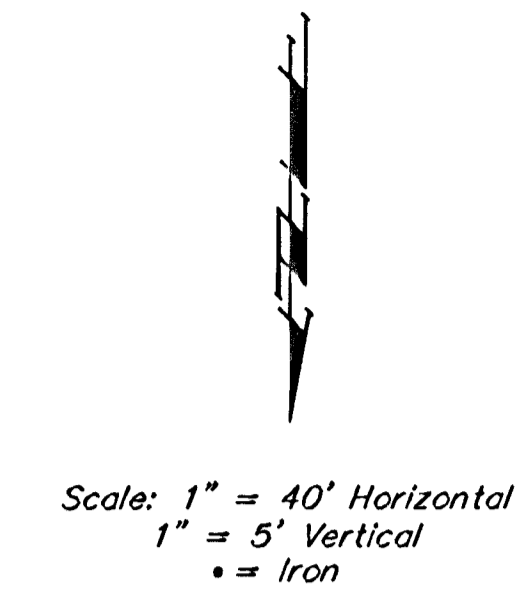
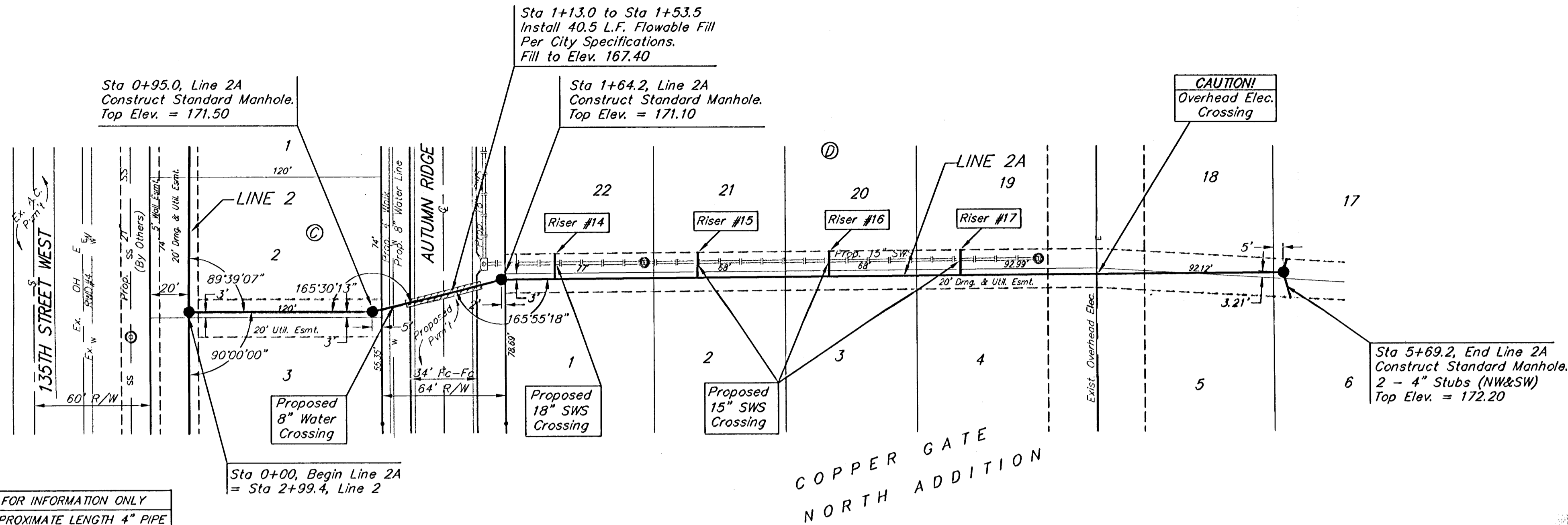


BENCHMARKS:

BM #1: C.O.W. disc at SW corner of intersection.
30.00'± S. of CL of 13th St. N.
35.00'± W. of CL of 135th St. W.
Elev. = 168.25 City Datum

BM #2: Small RR spike in 4th HLP
W. of 135th St. W. on south side of 13th St. N. (N. face of HLP).
Elev. = 179.24 City Datum

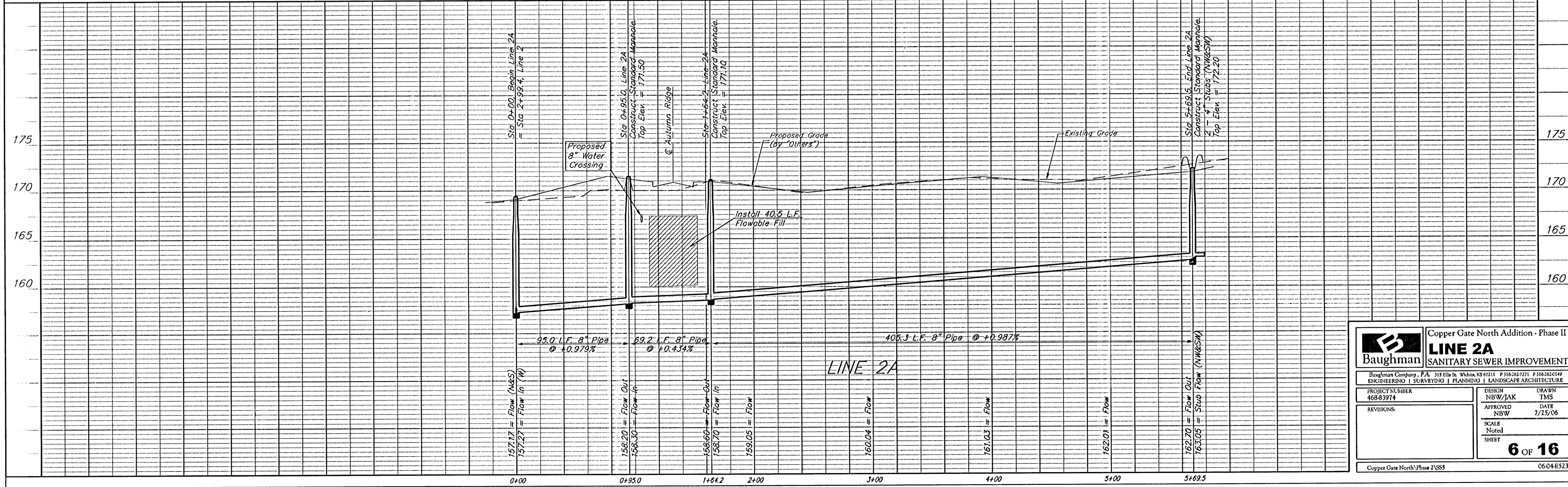
BM #3: RR spike in Power Pole.
1321.65 W. of 135th St. W.
30' N. of 13th St. N.
Elev. = 178.45 City Datum



SEWER SERVICE TABLE

NUMBER	TYPE	LOCATION			FOR INFORMATION ONLY	
		LOT NO.	BLOCK NO.	LINE NO.	STATION/DIRECTION	APPROXIMATE LENGTH 4\"/>
14	8\"/>					

NOTE: Vertical Riser Pipe shall be extended to 2' minimum above ground water elevation and 4' maximum below proposed ground elevation.



Copper Gate North Addition - Phase II

LINE 2A
SANITARY SEWER IMPROVEMENTS

Baughman Company, P.A. 315 Ellis St. Wichita, KS 67211 P 316-262-7271 F 316-262-6149
ENGINEERING | SURVEYING | PLANNING | LANDSCAPE ARCHITECTURE

PROJECT NUMBER 46883974	DESIGN NBW/JAK	DRAWN TMS
REVISIONS:	APPROVED NBW	DATE 7/23/06
SCALE Notes		SHEET

6 OF 16

Copper Gate North Phase 2/SS5 06-04-8523