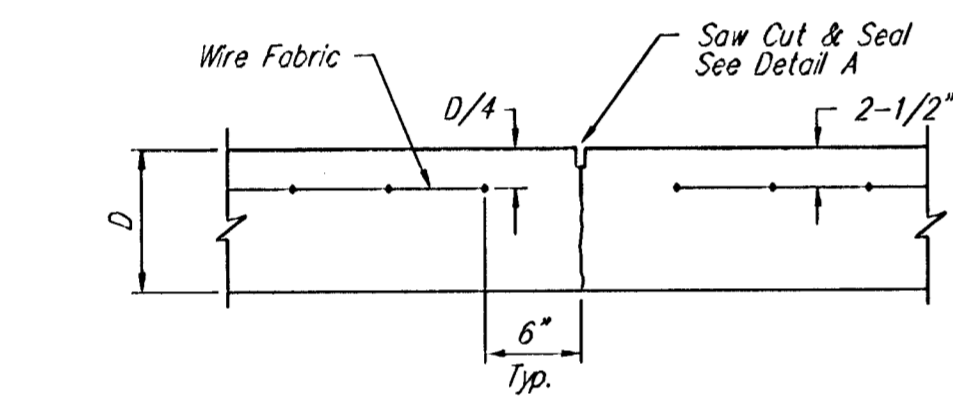


**EXPANSION JOINT**

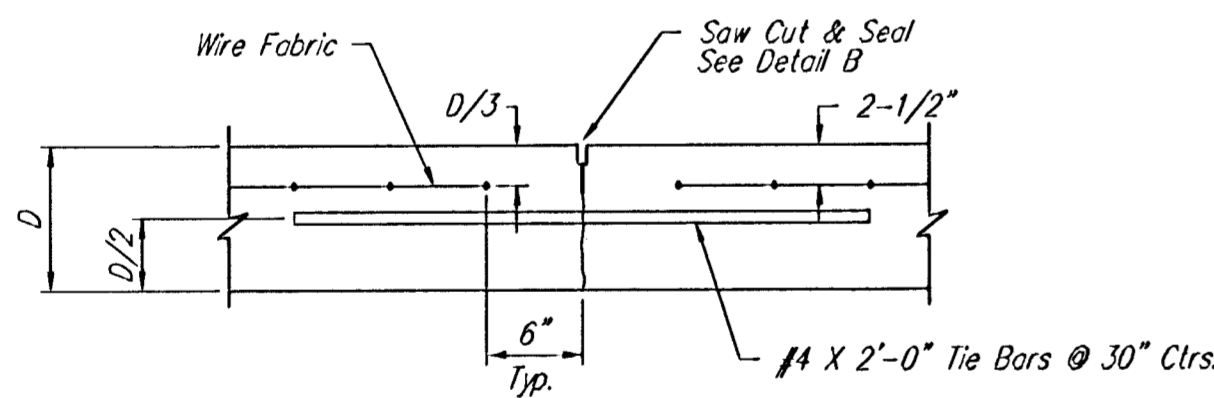
NOTE: Extra Thickness to be Subsidiary to Price of Square Yards Pavement



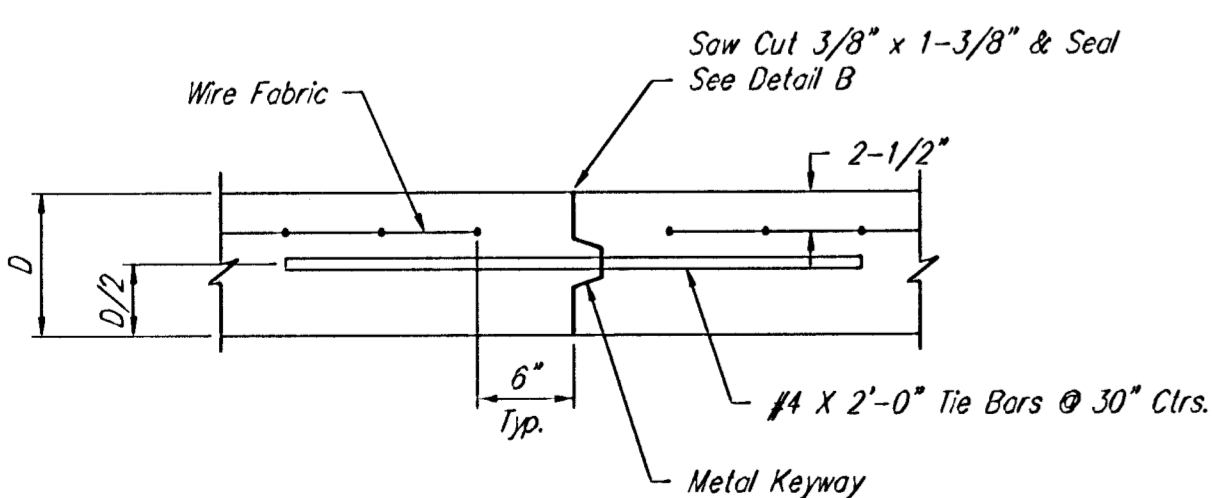
**KEYWAY DETAIL**



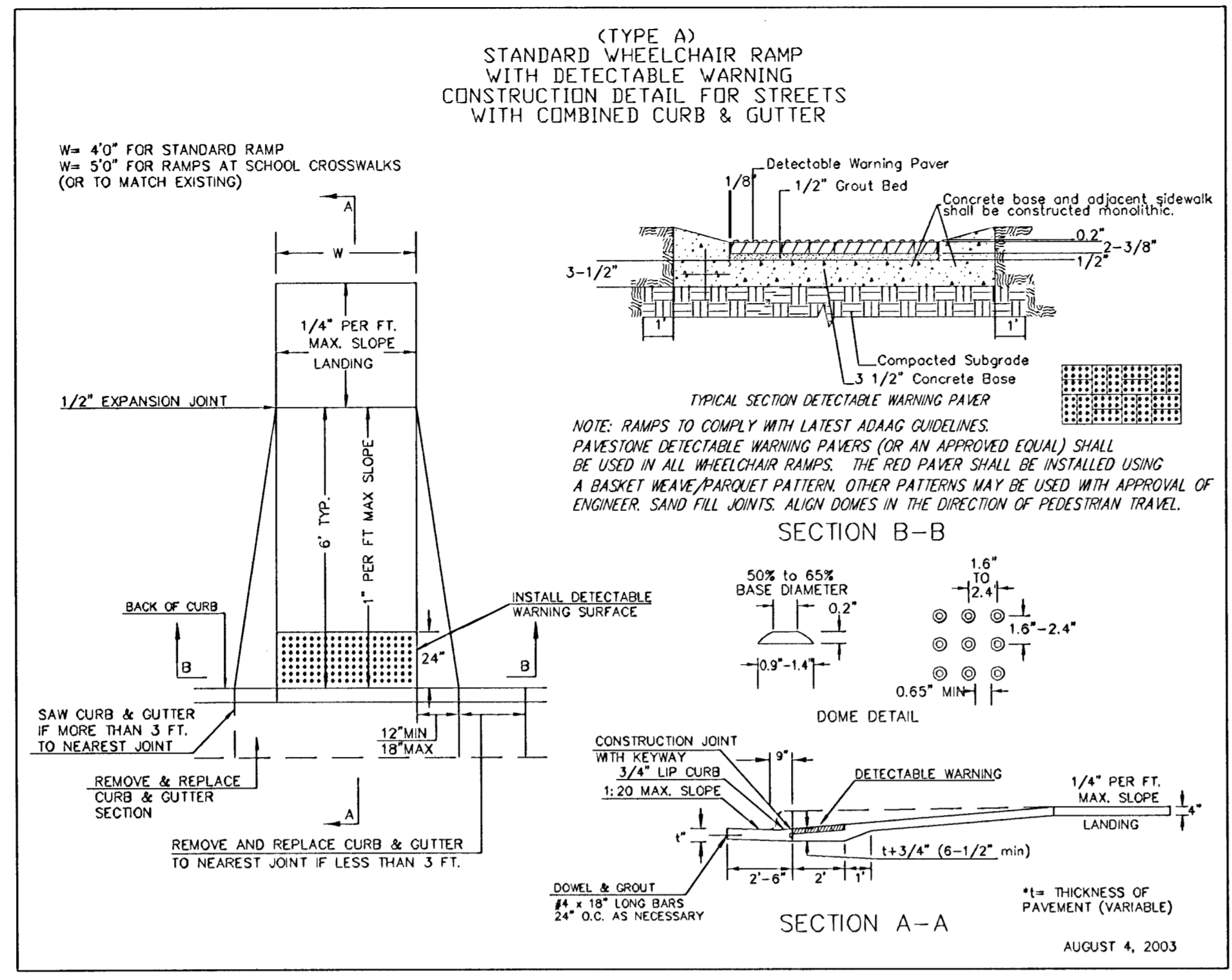
**CONTRACTION JOINT DETAIL (C.J.)**



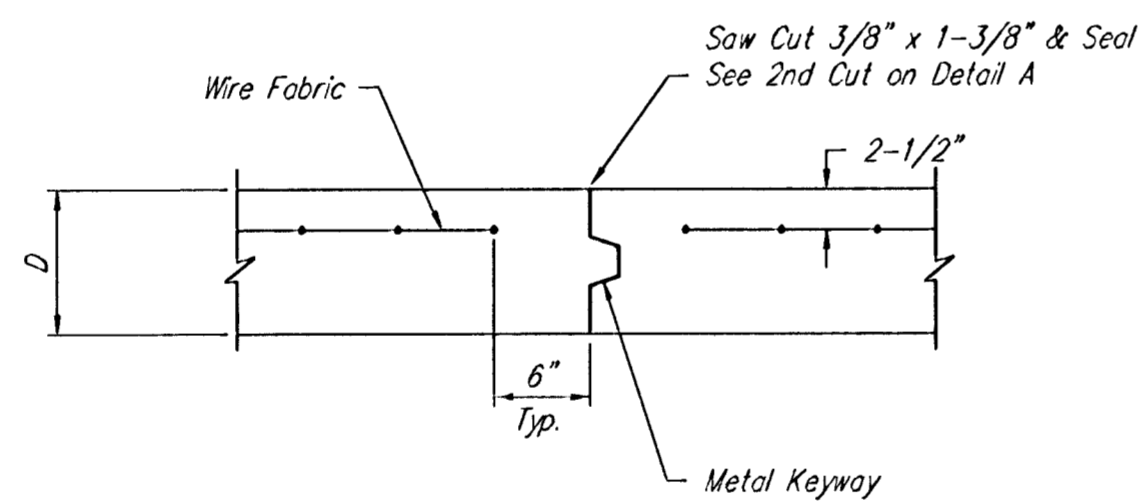
**LONGITUDINAL JOINT DETAIL (L.J.)**



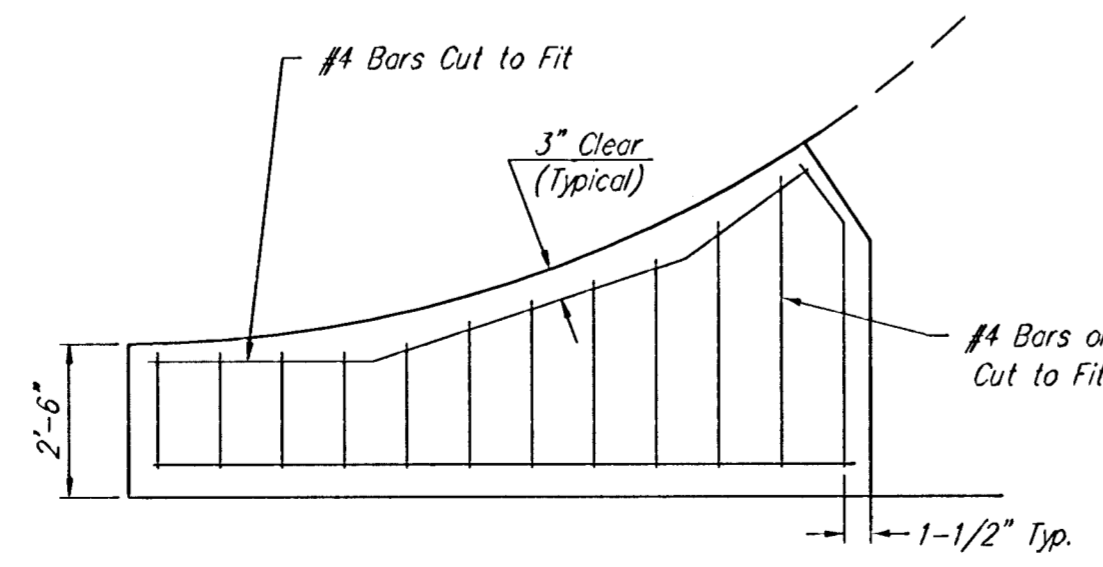
**OPTIONAL LONGITUDINAL JOINT DETAIL (L.J.) (CONSTRUCTION JOINT)**



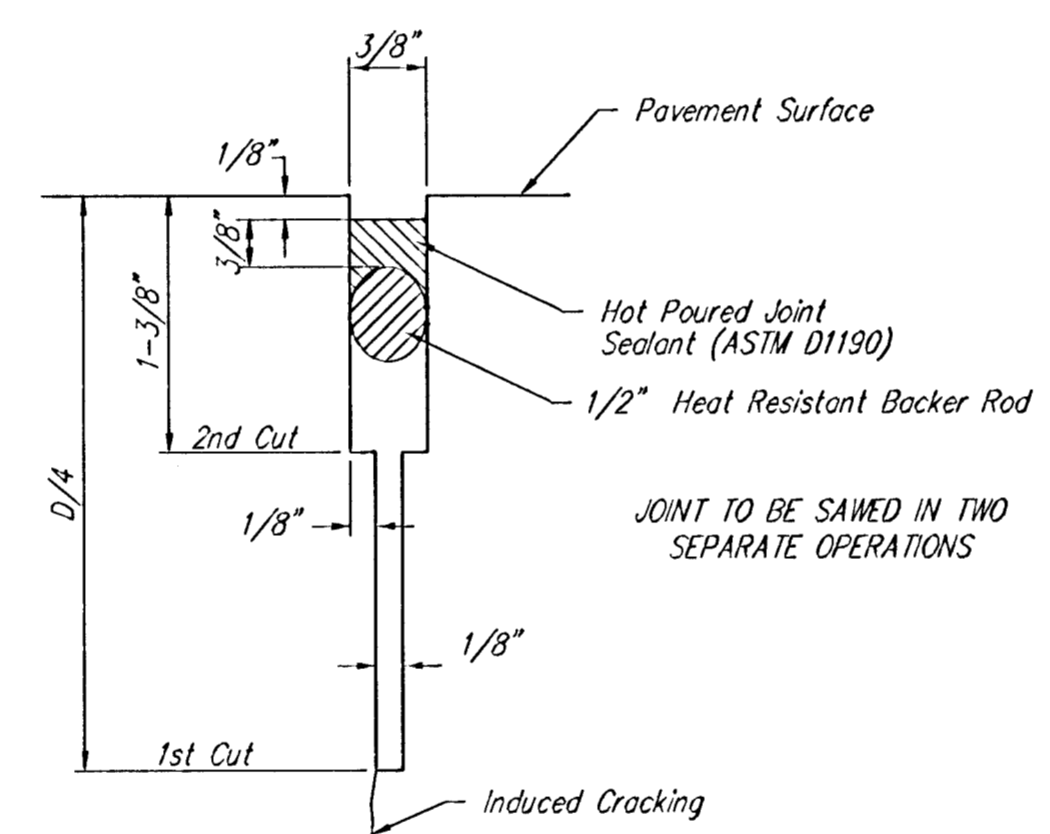
**WHEELCHAIR RAMP DETAIL**



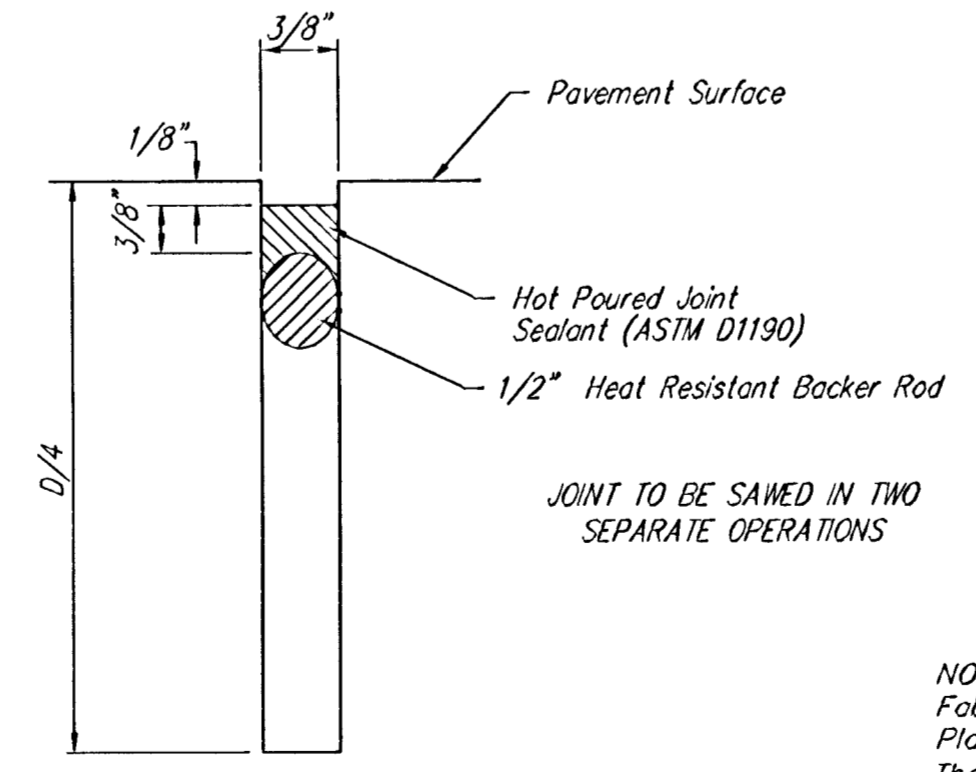
**OPTIONAL CONTRACTION JOINT (CONSTRUCTION JOINT)**



**WING REINFORCING DETAIL**

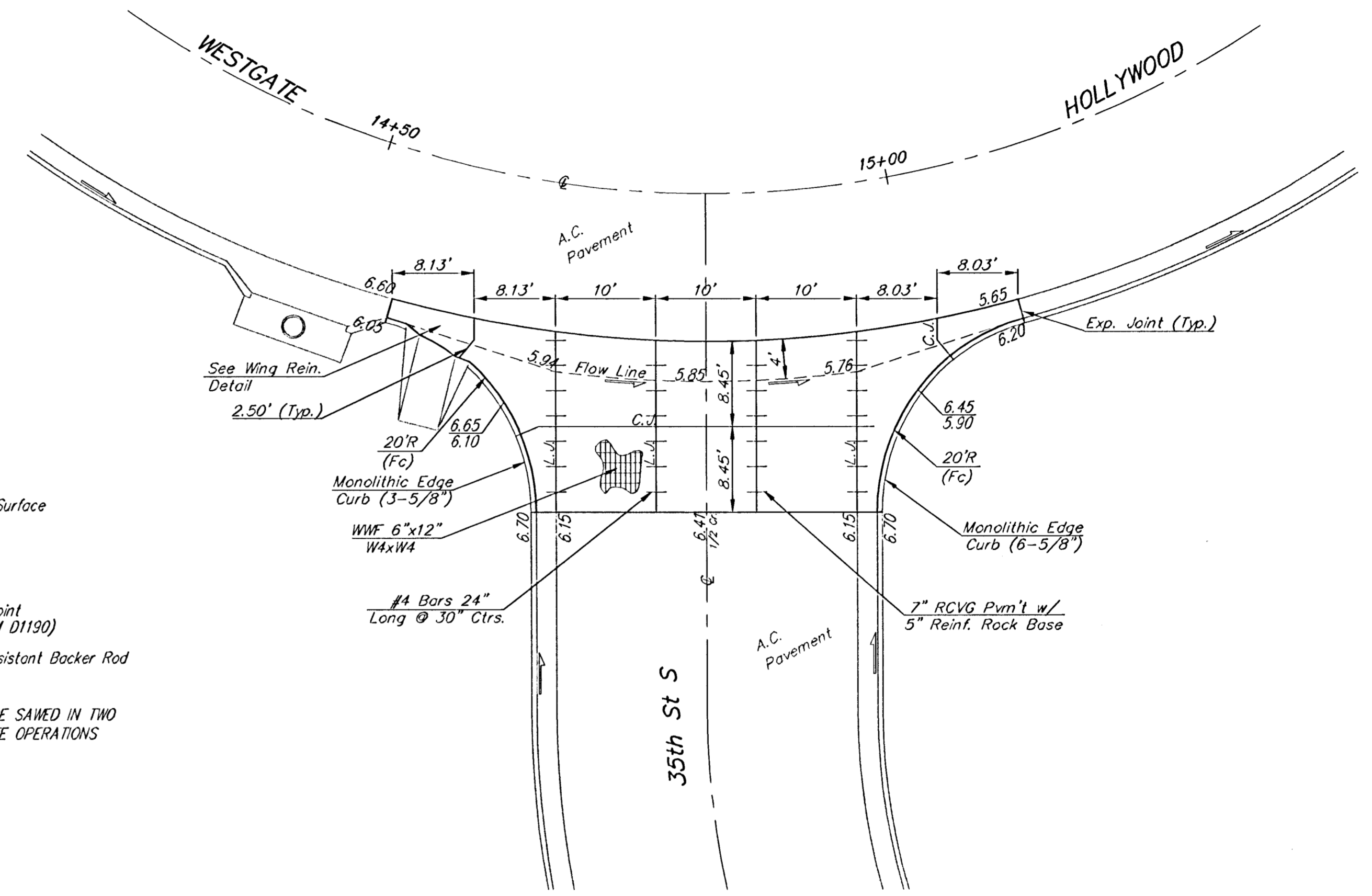


**SAW JOINT DETAIL "A"**

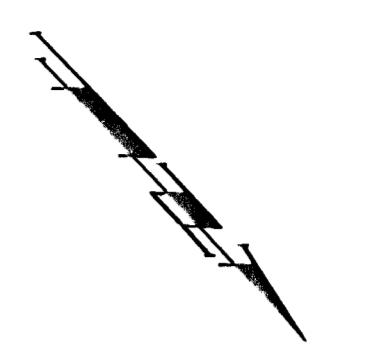


**SAW JOINT DETAIL "B"**

NOTE: 6" X 12" W4X14 Wire Fabric Reinforcing Shall Be Placed So That The Wires With The 6" Spacing Will Run Parallel With The Longitudinal Joints.



**VALLEY GUTTER DETAILS**



Scale: 1" = 10'

		Harvest Ridge Addition - Phase II	
		Miscellaneous Details	
Baughman Company, P.A. 315 Elm St. Waltham, MA 02121 P 316-262-7211 F 316-262-0149			
ENGINEERING   SURVEYING   PLANNING   LANDSCAPE ARCHITECTURE			
PROJECT NUMBER 472-83805	DESIGN JAK	DRAWN JAK	
REVISIONS:	APPROVED	DATE 4/12/06	
	SCALE NONE		
			<b>4 OF 34</b>
E:\Eng\Harvest Ridge\Phase 2\vgdetail.dwg			