

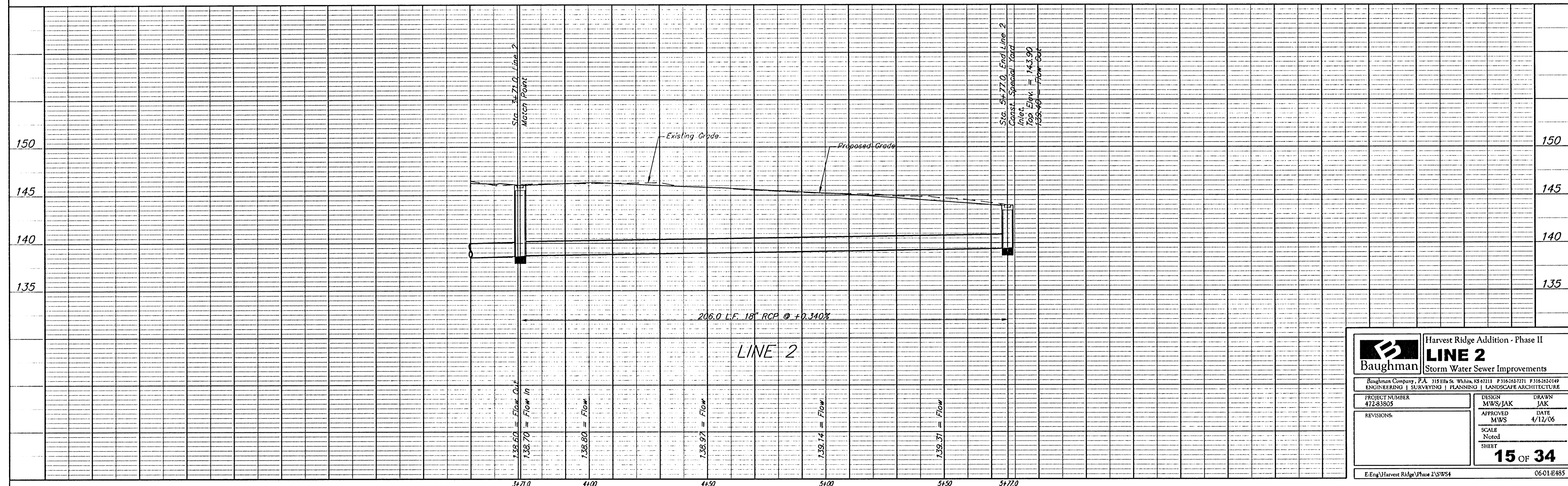
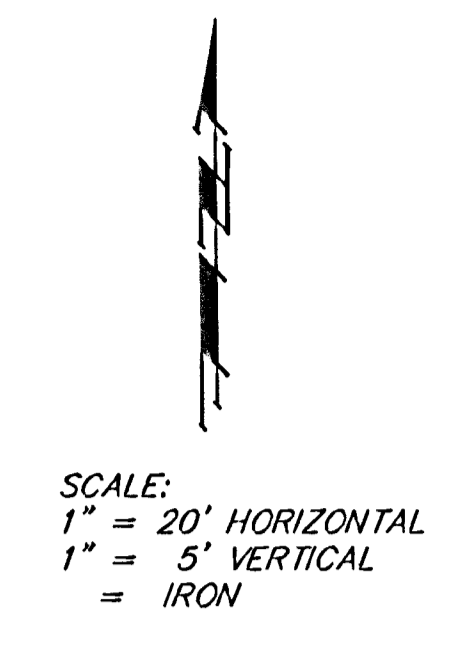
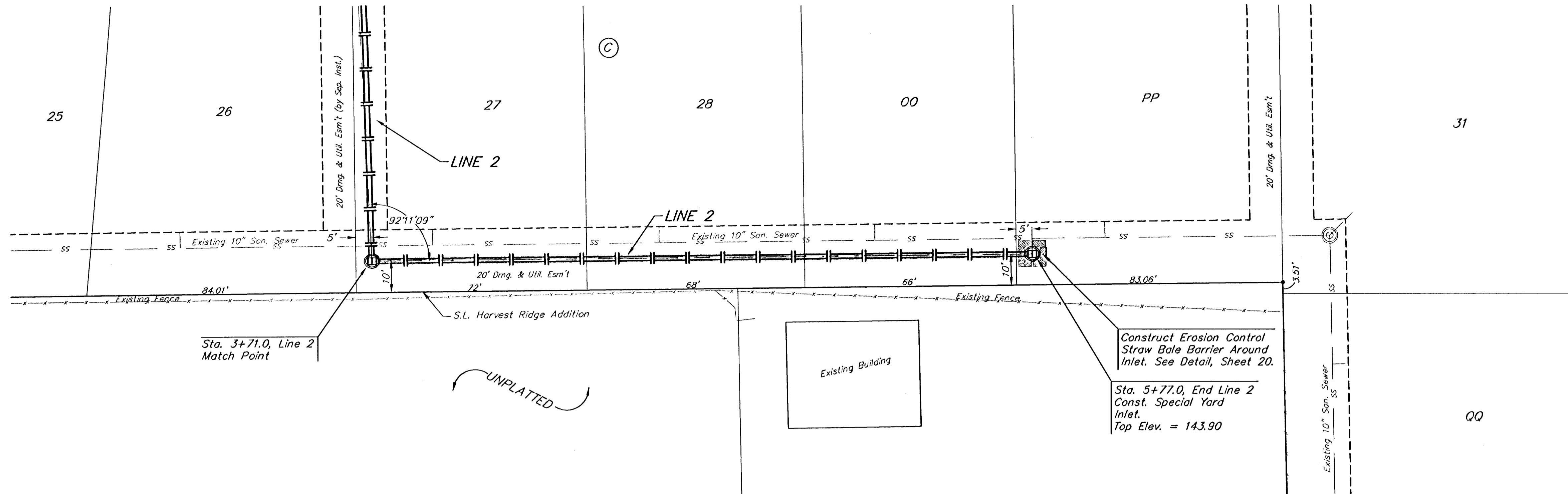
Benchmarks:

BM #1: Small RR spike in 2nd PP north of K-42 Highway, west side of Maize
Elev. = 143.61 (City Datum)

BM #2: Small RR spike in PP east of East 1/4 Corner (G)
Elev. = 147.00 (City Datum)

BM #3: "□" Top Headwall southeast corner K-42 Highway and Maize (County BM with City Datum)
Elev. = 144.04 (City Datum)

HARVEST RIDGE ADDITION



	Harvest Ridge Addition - Phase II	
	LINE 2	
Storm Water Sewer Improvements		
<small>Baughman Company, P.A. 315 Ellis St. Wichita, KS 67211 P 3162627271 F 3162620149 ENGINEERING SURVEYING PLANNING LANDSCAPE ARCHITECTURE</small>		
<small>PROJECT NUMBER</small> 472-83805	<small>DESIGN</small> MWS/JAK	<small>DRAWN</small> JAK
<small>APPROVED</small> MWS	<small>DATE</small> 4/12/06	<small>SCALE</small> Noted 15 OF 34
<small>REVISIONS:</small>		
<small>E:Eng\Harvest Ridge\Phase 2\SWS4</small>		