

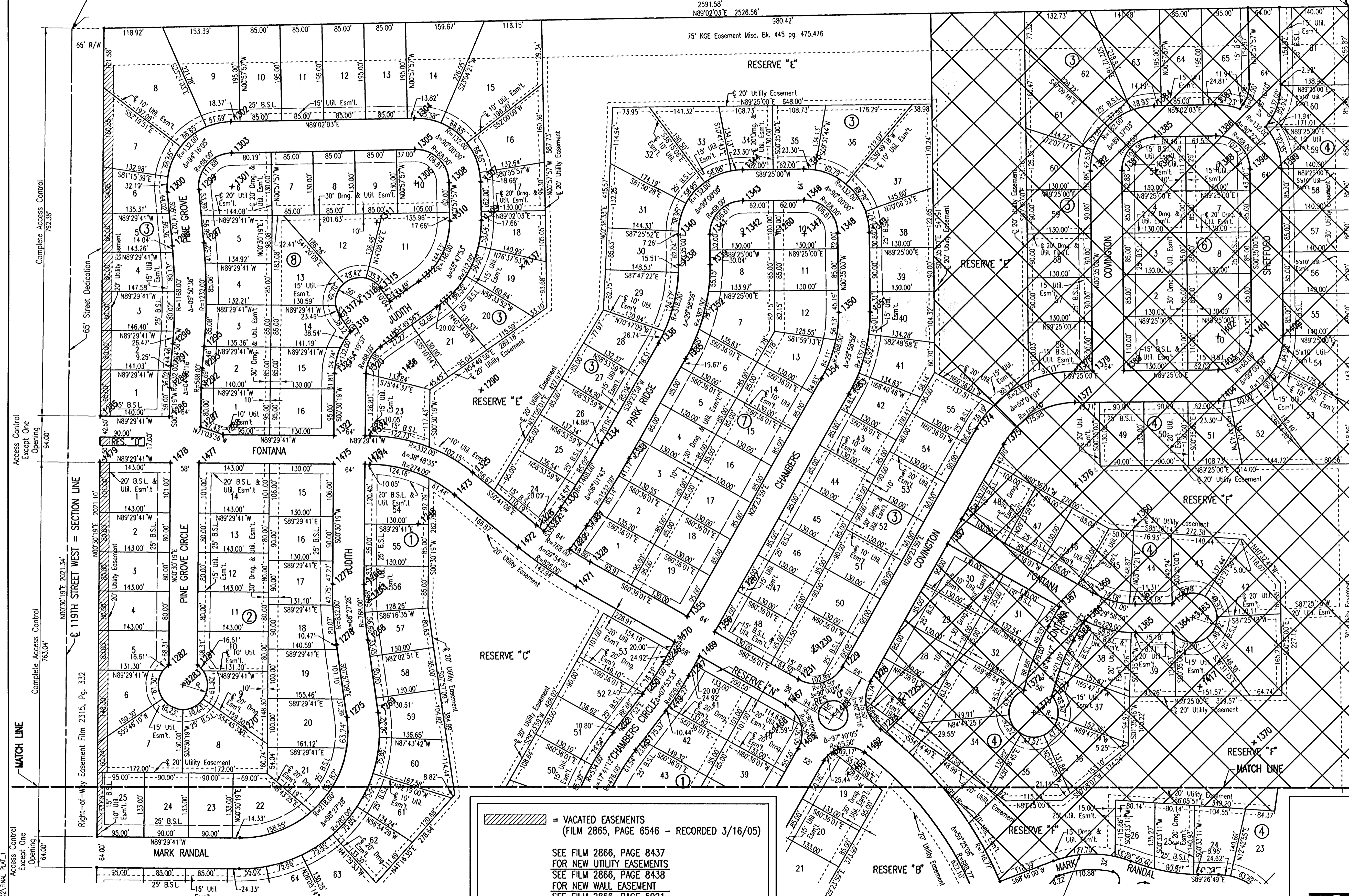
# FONTANA

## AN ADDITION TO WICHITA, SEDGWICK COUNTY, KANSAS

SCALE: 1" = 100'  
 • = 1/2" REBAR W/PEC CAP UNLESS OTHERWISE NOTED

Center Sec. 31, 126S, R1W  
 Found 3/4" Pipe

West 1/4 Cor. Sec. 31, 126S,  
 R1W or NW Cor. Gov. Lot 3  
 Found Pipe w/ Sedgwick  
 County Cap in Concrete



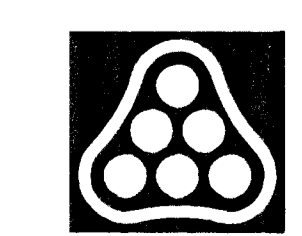
COORDINATE LIST		COORDINATE LIST			
POINT	NORTH	POINT	EAST		
1223	26388.8223	16383.3865	1339	27332.2574	16037.1811
1225	26449.1892	16428.7307	1340	27393.6435	15972.5529
1228	26486.2520	16362.9538	1341	27394.2950	16036.5496
1229	26515.1058	16305.7514	1342	27394.9872	16104.5460
1230	26547.2597	16248.6867	1343	27462.9837	16103.8538
1231	26490.1950	16216.5328	1344	27528.9804	16103.2023
1246	26525.9576	15943.4158	1345	27528.2427	16227.1959
1247	26497.4855	15993.9463	1346	27464.2460	16227.8474
1248	26806.2607	15445.9510	1347	27396.2495	16228.5396
1249	26425.1136	15946.3187	1348	27396.9417	16296.5361
1250	26460.2591	15900.1799	1349	27397.5932	16360.5328
1251	26346.1531	15886.1719	1350	27234.7560	16298.1872
1252	26381.2986	15840.0330	1351	27235.4076	16362.1839
1260	27397.0847	16171.5184	1352	27232.0279	16030.2011
1263	26651.7680	15345.4747	1353	27069.0496	16319.4450
1266	26682.5831	15335.7004	1354	27100.4671	16263.6872
1267	26675.8117	16103.6705	1355	26617.0922	15991.3233
1268	26569.5566	15343.0564	1356	26585.6747	16047.0812
1269	26422.0317	15363.6651	1357	26764.9154	16519.9703
1270	26383.0161	15084.3771	1358	26815.4459	16548.4424
1275	26413.1771	15300.2806	1359	26665.4498	16814.6465
1276	26560.7020	15279.6719	1360	26814.4278	16898.5901
1277	26683.1474	15271.7028	1361	26643.4367	16900.3309
1281	26519.5205	14997.2495	1362	26644.2020	16975.5032
1282	26520.0319	14939.2517	1363	26615.6181	17016.5271
1283	26479.0469	14967.8915	1364	26586.2050	16976.0216
1285	27024.5858	14800.6950	1365	26585.4397	16900.9231
1286	27023.3515	14940.6896	1366	26609.1045	16791.1834
1287	27001.7880	15004.5019	1367	26637.2818	16746.4867
1288	26986.3918	15049.3679	1368	26568.9446	16774.5548
1289	27082.3492	14941.2098	1369	26597.4167	16724.0242
1290	27076.7768	15573.1852	1370	26362.2763	17141.3370
1291	27127.5671	14943.2294	1371	26456.2443	16750.9579
1292	27081.7849	15005.2073	1372	26468.9542	16674.3672
1293	27122.4238	15007.0224	1373	26422.8586	16693.7370
1295	27166.7407	15010.5954	1374	26998.1917	16577.9524
1296	27171.8840	14946.8024	1375	26966.7742	16633.7103
1297	27378.1324	15009.4438	1376	26884.3032	16780.0747
1298	27372.2943	14945.7106	1377	27052.2945	16778.3645
1299	27488.0552	14999.3747	1378	27116.2912	16777.7130
1300	27482.2172	14935.6415	1379	27116.6547	16813.4163
1301	27494.2582	15067.0912	1380	27117.3062	16877.4130
1302	27626.2394	15064.8662	1381	27525.1607	16873.2609
1303	27562.2485	15065.9450	1382	27524.5092	16809.2643
1304	27632.5129	15437.0035	1383	27525.8530	16941.2574
1305	27568.5220	15438.0822	1384	27657.8742	16939.0325
1306	27500.5317	15439.2284	1385	27593.8433	16940.1112
1307	27502.7566	15571.2097	1386	27595.9335	17064.0994
1308	27501.6779	15507.2188	1387	27659.9244	17063.0176
1309	27423.1097	15572.5524	1388	27527.9431	17065.2426
1310	27422.0310	15508.5615	1398	27528.6353	17133.2390
1311	27419.5363	15360.5825	1399	27529.2868	17197.2357
1312	27298.5511	15445.8267	1400	27188.6009	17200.7040
1313	27246.2331	15482.6890	1401	27187.9494	17136.7073
1314	27257.3723	15387.3824	1402	27187.2572	17068.7109
1315	27285.4000	15367.6345	1403	27119.2607	17069.4031
1316	27256.6013	15326.7611	1404	27055.2640	17070.0546
1317	27227.8026	15285.8877	1417	26476.2300	17031.3162
1318	27196.6431	15307.8422	1456	27110.0529	15407.4722
1319	27165.6407	15368.3059	1462	26341.3194	16350.0505
1320	27110.6525	15339.4748	1463	26297.0347	16316.5974
1321	27111.2168	15275.4773	1464	26324.2796	16268.2448
1322	26984.4080	15274.3592	1465	26348.9731	16215.5852
1323	26983.8437	15338.3567	1466	26381.1270	16158.5205
1324	26983.7551	15348.4019	1467	26438.1917	16190.6744
1325	26908.6279	15555.8243	1468	26417.0671	16287.2404
1326	26802.9277	15684.9263	1469	26536.6168	16015.9954
1327	26790.3791	15700.6338	1470	26565.0890	15965.4648
1328	26727.9902	15794.5083	1471	26677.4596	15766.0362
1329	26753.2794	15752.7837	1472	26758.0296	15648.1785
1330	26838.4922	15734.8617	1473	26863.7548	15519.0765
1331	26801.3925	15787.0116	1474	26925.7574	15347.8905
1333	26937.4098	15873.3772	1475	26926.4102	15273.8478
1334	26968.8273	15817.6194	1476	26925.8459	15337.8453
1335	27140.8455	15988.0057	1477	26928.8173	15000.8584
1336	27172.2630	15932.2478	1478	26929.3287	14942.8606
1337	27328.3687	15655.2009	1479	26930.5895	14799.8662
1338	27331.6059	15973.1844			

× 1000 = COORDINATE POINT NO.

= VACATED EASEMENTS  
 (FILM 2865, PAGE 6546 - RECORDED 3/16/05)

SEE FILM 2866, PAGE 8437  
 FOR NEW UTILITY EASEMENTS  
 SEE FILM 2866, PAGE 8438  
 FOR NEW WALL EASEMENT  
 SEE FILM 2866, PAGE 5921  
 FOR NEW RESERVES

REPLATED AS "FONTANA 2ND"



No.	Revision	By	Date
LATERAL 5, MAIN 7 OF THE NORTHWEST INTERCEPTOR SEWER PLAT			
JAMES L. ARMOUR, P.E. - ACTING CITY ENGINEER CITY OF WICHITA PROJECT NO. 468-83877			
<b>Professional Engineering Consultants, P.A.</b>			
303 S. TOPEKA - WICHITA, KANSAS 67202 316-262-2691 • FAX 316-262-3003			
Designed by	MDK	Job No.	35-04485-002
Drawn by	GJR	Date	September 2004
			SH. 3 of 33

Sheet 11-15-2005 11:45:29 PM by T.E.  
 Plot Scale: 1:100 11-15-2005 2:30:20 PM by JCS  
 C:\2004\04485\002\FINAL\_PLAT\_1