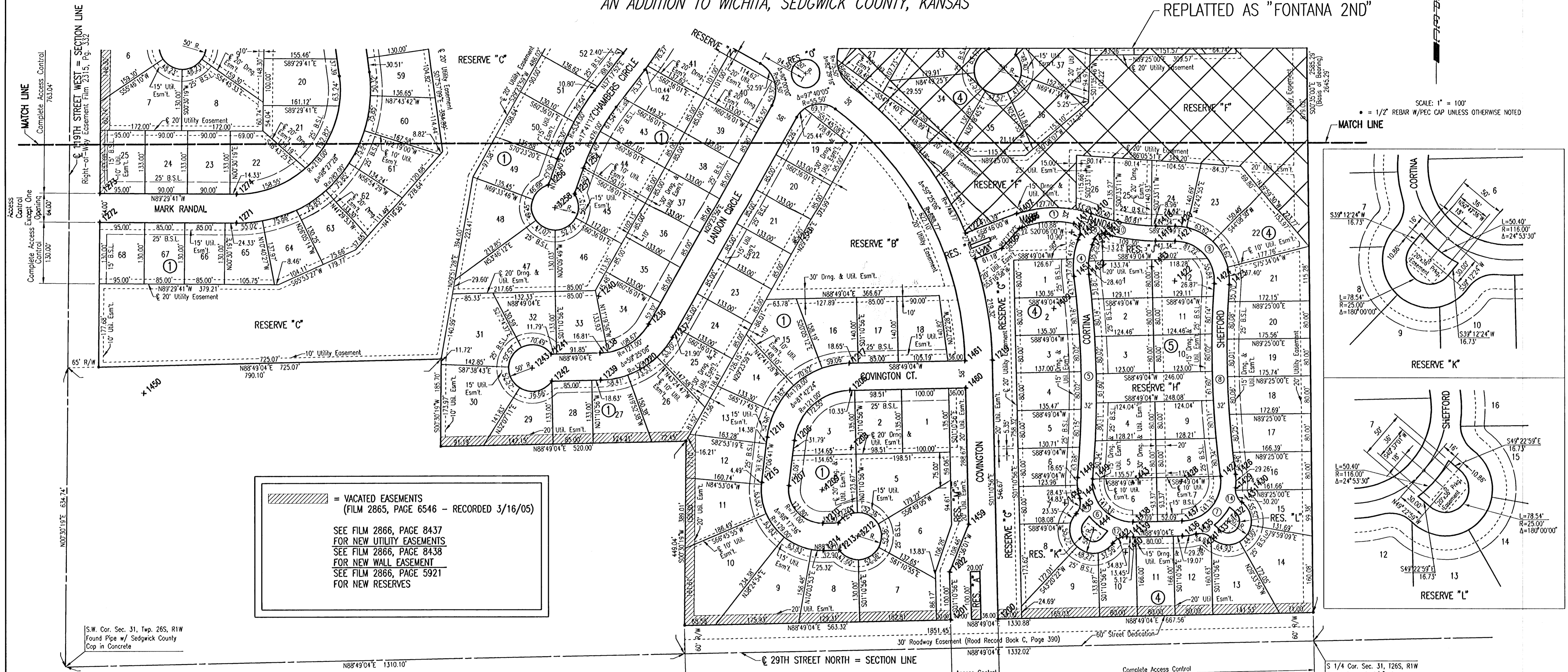


# FONTANA

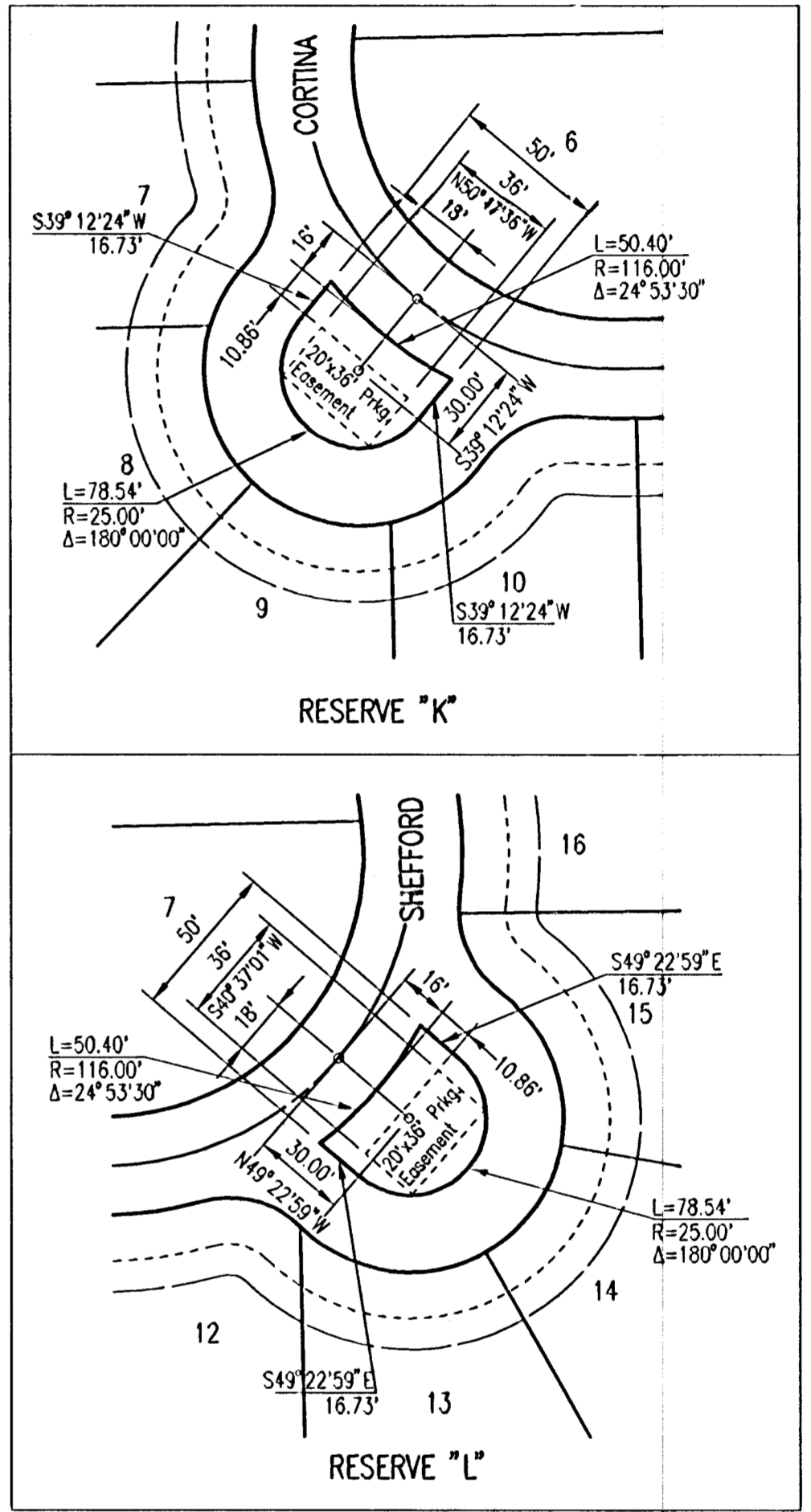
AN ADDITION TO WICHITA, SEDGWICK COUNTY, KANSAS

REPLATED AS "FONTANA 2ND"



= VACATED EASEMENTS  
 (FILM 2865, PAGE 6546 - RECORDED 3/16/05)  
  
 SEE FILM 2866, PAGE 8437  
 FOR NEW UTILITY EASEMENTS  
 SEE FILM 2866, PAGE 8438  
 FOR NEW WALL EASEMENT  
 SEE FILM 2866, PAGE 5921  
 FOR NEW RESERVES

SCALE: 1" = 100'  
 • = 1/2" REBAR W/PEC CAP UNLESS OTHERWISE NOTED



COORDINATE LIST		COORDINATE LIST		COORDINATE LIST		COORDINATE LIST	
POINT	NORTH	EAST	POINT	NORTH	EAST	POINT	NORTH
1200	25260.5914	16692.7768	1239	25765.2056	15852.2988	1413	26079.4094
1201	25258.5283	16592.7980	1240	25944.1675	15848.6060	1414	26064.4171
1202	25358.5071	16590.7350	1241	25821.0553	15747.4897	1415	26058.2312
1205	25742.9056	16379.9230	1242	25763.0676	15748.6863	1416	26075.5676
1206	25636.9108	16262.3501	1243	25791.2211	15707.3658	1418	26092.2479
1207	25541.7677	16250.4803	1253	26057.7174	16264.8285	1419	26060.2494
1208	25621.9313	16382.4193	1254	26217.4787	15816.4399	1420	26091.8489
1209	25532.9781	16320.9342	1255	26236.9454	15761.8043	1421	26059.8504
1210	25661.9932	16322.3989	1256	26182.3993	15742.3695	1422	25975.8543
1211	25462.6720	16355.2963	1257	26162.9326	15797.0051	1423	25987.6769
1212	25434.5185	16396.6168	1258	26134.2978	15756.0167	1424	25969.9328
1213	25404.6844	16356.4929	1271	26101.0271	15081.8907	1426	25565.9712
1214	25404.0055	16323.5955	1272	26103.5781	14792.5742	1427	25561.7479
1215	25548.9479	16192.9265	1273	26167.5756	14793.1384	1428	25550.6617
1216	25644.0910	16204.7363	1274	26165.0246	15082.4550	1429	25536.7876
1217	25800.8932	16378.7265	1405	26044.7705	16702.0999	1430	25532.8406
1219	25807.1409	16681.4938	1406	26087.1138	16739.2893	1431	25506.2781
1220	25791.7347	15934.8887	1407	26119.1940	16733.4975	1432	25466.0318
1221	26022.6124	16645.0715	1408	26089.3664	16745.0868	1433	25430.5761
1222	26077.0410	16625.0077	1409	25917.8575	16811.7255	1434	25407.1753
1236	25884.7688	15954.0232	1410	26118.8716	16890.7781	1435	25438.9541
1237	25856.2967	16004.5538	1411	26096.9271	16854.0349	1436	25434.6864
1238	25823.1933	15851.1022	1412	26073.2236	16866.7996	1437	25466.6796

x 1000 = COORDINATE POINT NO.

**CURVE DETAILS**

① = CURVE NUMBER

① CURVE NO. 1 R=184.00' Δ=34°31'31" Δ=42°42'05" R=216.00'	② CURVE NO. 2 L=30.41' R=18.00' Δ=96°48'23"	③ CURVE NO. 3 L=26.86' R=18.00' Δ=63°30'24"	④ CURVE NO. 4 R=134.00' Δ=27°13'02" R=166.00'	⑤ CURVE NO. 5 R=134.00' Δ=12°20'13" R=2016.00'	⑥ CURVE NO. 6 R=84.00' Δ=96°24'06" R=116.00'	⑦ CURVE NO. 7 R=84.00' Δ=96°24'06" R=116.00'	⑧ CURVE NO. 8 R=198.00' Δ=11°37'35" Δ=42°42'05" R=216.00'	⑨ CURVE NO. 9 R=84.00' Δ=33°29'21" R=116.00'	⑩ CURVE NO. 10 R=384.00' Δ=20°54'54" Δ=19°03'13" R=416.00'	⑪ CURVE NO. 11 R=33.00' Δ=60°28'20"	⑫ CURVE NO. 12 R=33.00' Δ=60°28'20"	⑬ CURVE NO. 13 R=33.00' Δ=60°28'20"	⑭ CURVE NO. 14 R=33.00' Δ=60°28'20"
-----------------------------------------------------------------------	------------------------------------------------------	------------------------------------------------------	--------------------------------------------------------	---------------------------------------------------------	-------------------------------------------------------	-------------------------------------------------------	-----------------------------------------------------------------------	-------------------------------------------------------	------------------------------------------------------------------------	-------------------------------------------	-------------------------------------------	-------------------------------------------	-------------------------------------------

S 1/4 Cor. Sec. 31, T26S, R1W  
 Found Stone & 3/4" IP on  
 West Side

LATERAL 5, MAIN 7 OF THE NORTHWEST INTERCEPTOR SEWER  PLAT	Revision _____ By _____ Date _____
JAMES L. ARMOUR, P.E. - ACTING CITY ENGINEER CITY OF WICHITA PROJECT NO. 468-83877	
<b>Professional Engineering Consultants, P.A.</b> 303 S. TOPEKA • WICHITA, KANSAS 67202 316-262-2691 • FAX 316-262-3003	
Designed by MDK Drawn by GJR	Job No. 35-04485-002 Date September 2004
SH. 4 of 33	

Scaled 11-15-2005 11:23:38 AM by TLE  
 Plot Scale 1:100 11-15-2005 2:30:33 PM by GJR  
 G:\2004\04485\002\FINAL\_PLOT\_2