

PLAN	CHECKED	DATE
	CHECKED	

PROFILE	CHECKED	DATE
	CHECKED	

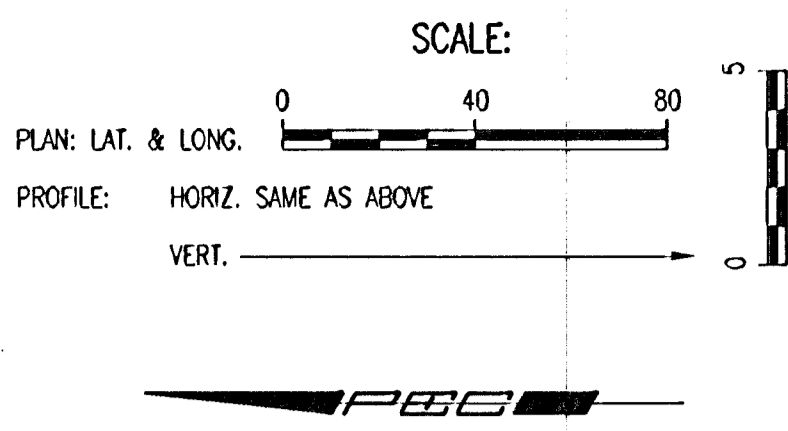
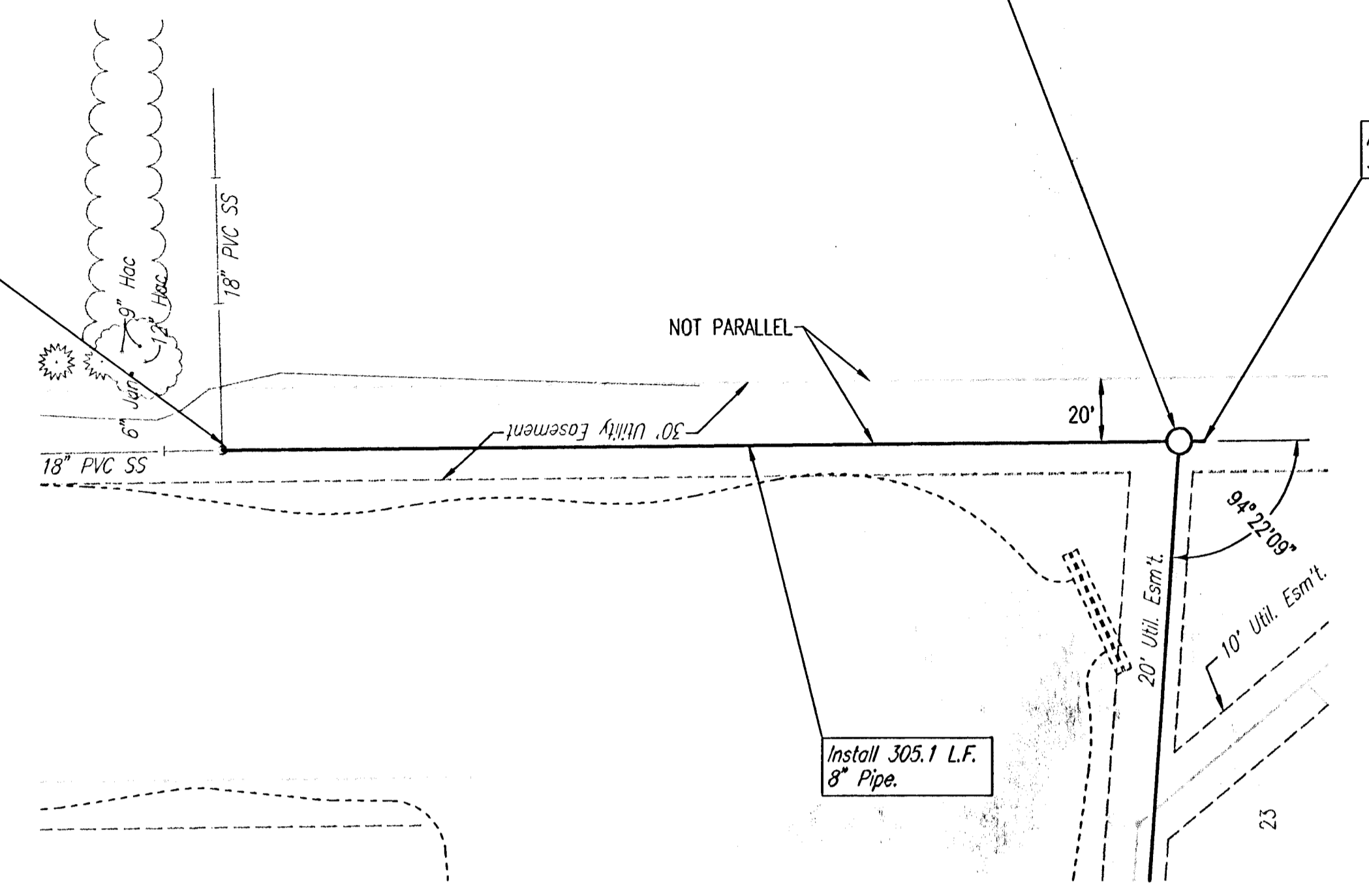
DSNR: MDK OPER: TLB SCALE: 1"=40.00
 Q:\2004\04485\002\SSPP01 11-15-2005 01:24:26 pm

N-26,512.2772, E-17,328.2162
 Sta. 0+00.0
 Existing Precast Concrete MH.
 Connect new 8" Pipe to
 existing 8" Stub.
 Reconstruct outside drop on
 existing MH. Core MH wall
 and grout top of outside
 drop pipe connection in
 place w/ non-shrink grout
 and waterstop gasket. Unused
 wall penetration to be sealed.
 (Exist. 8" Pipe Stub I= 151.6)
 This work shall be considered
 subsidiary to the price bid for
 pipe in place.

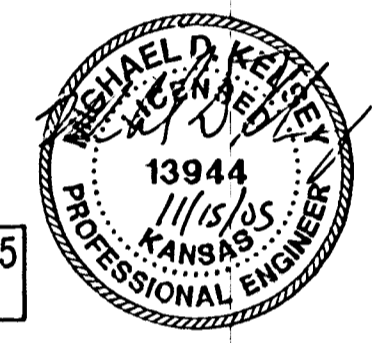
N-26,207.1597, E-17,330.7014
 Sta. 3+05.1
 Const. MH 1
 Standard MH

Install 1- 8"
 Stub and Plug.

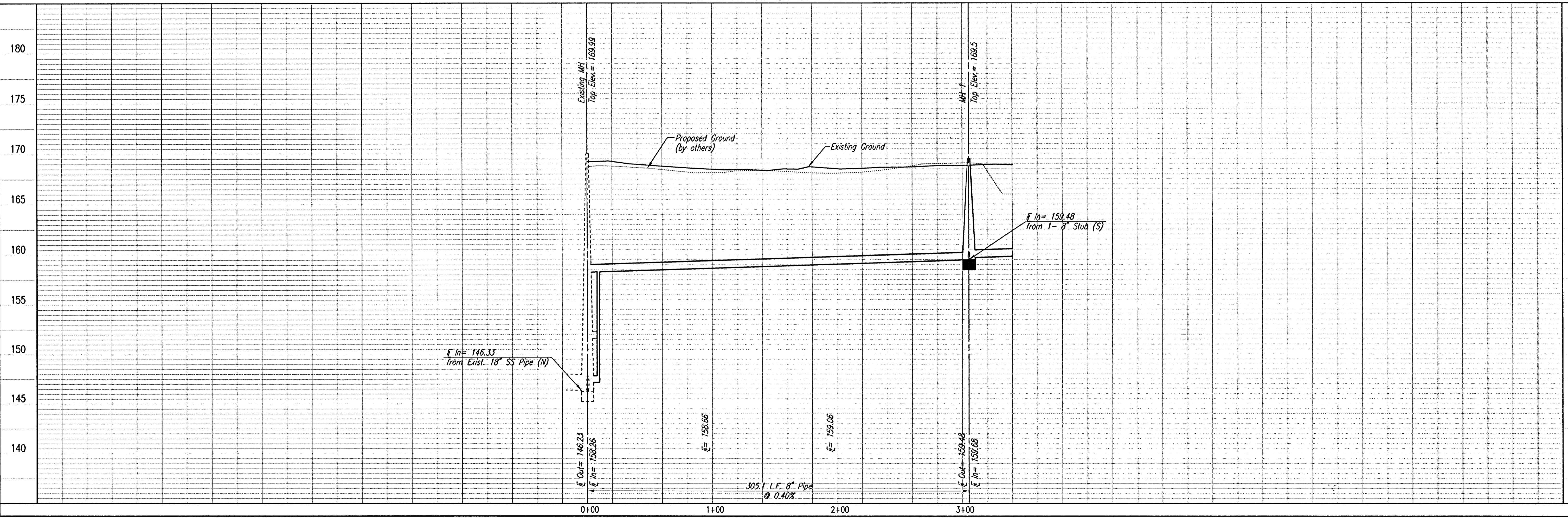
Install 305.1 L.F.
 8" Pipe.



SEE SHEETS NO. 3, 4 & 5
 FOR PLAT COORDINATES



SANITARY SEWER LINE NO. 1



LATERAL 5, MAIN 7
 OF THE NORTHWEST INTERCEPTOR SEWER
SANITARY SEWER LINE NO. 1
 JAMES L. ARMOUR, P.E. - ACTING CITY ENGINEER
 CITY OF MOHAWA PROJECT NO. 488-58877

Professional Engineering Consultants, P.A.
 303 S. TOPICKA • WICHITA, KANSAS 67202
 316-262-2691 • FAX 316-262-3003

Designed By: MDK
 Drawn By: TLB
 Job No.: 35-04485-002
 Date: September 2004

Sheet 6 of 33