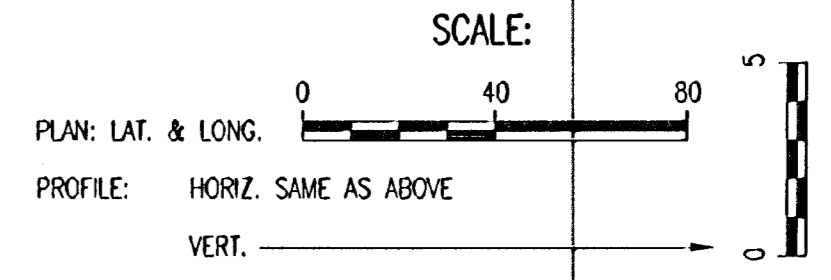
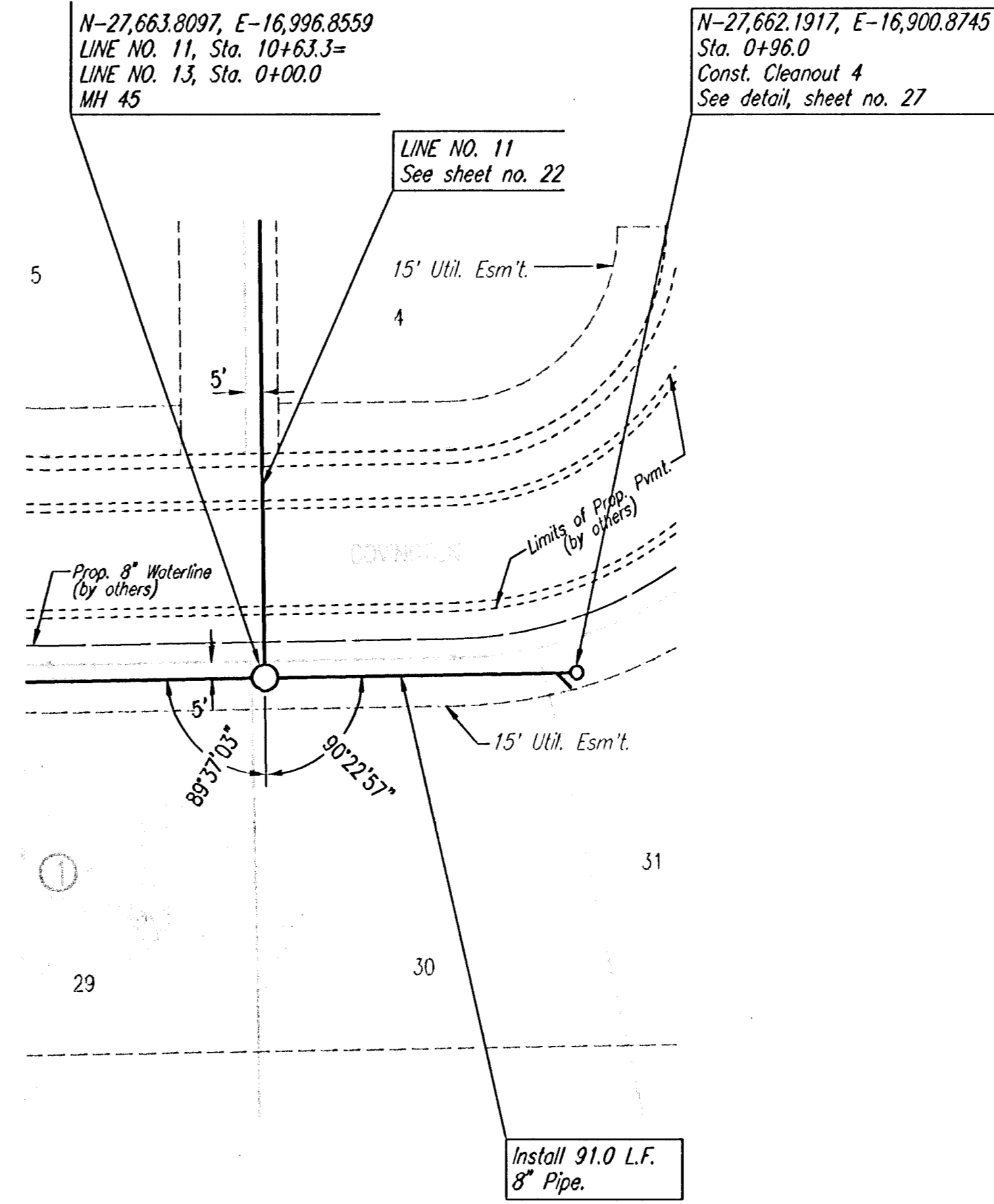
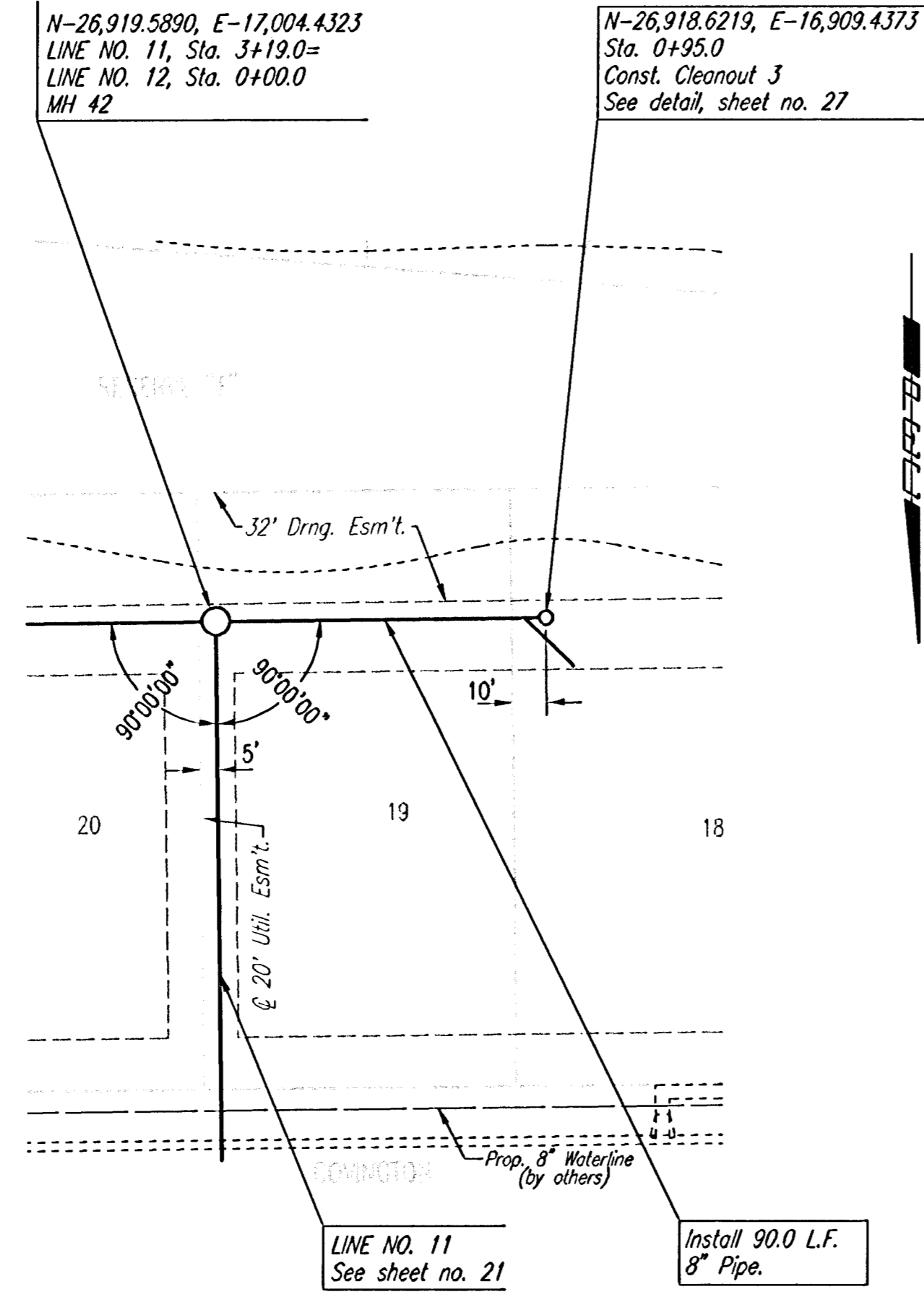


PLAN	CHECKED	DATE
	CHECKED	

PROFILE	CHECKED	DATE
	CHECKED	

DSNR: MDK OPER: TLB SCALE: 1"=40.00
 G:\2004\04485\002\SSPP18 11-15-2005 01:15:33 pm

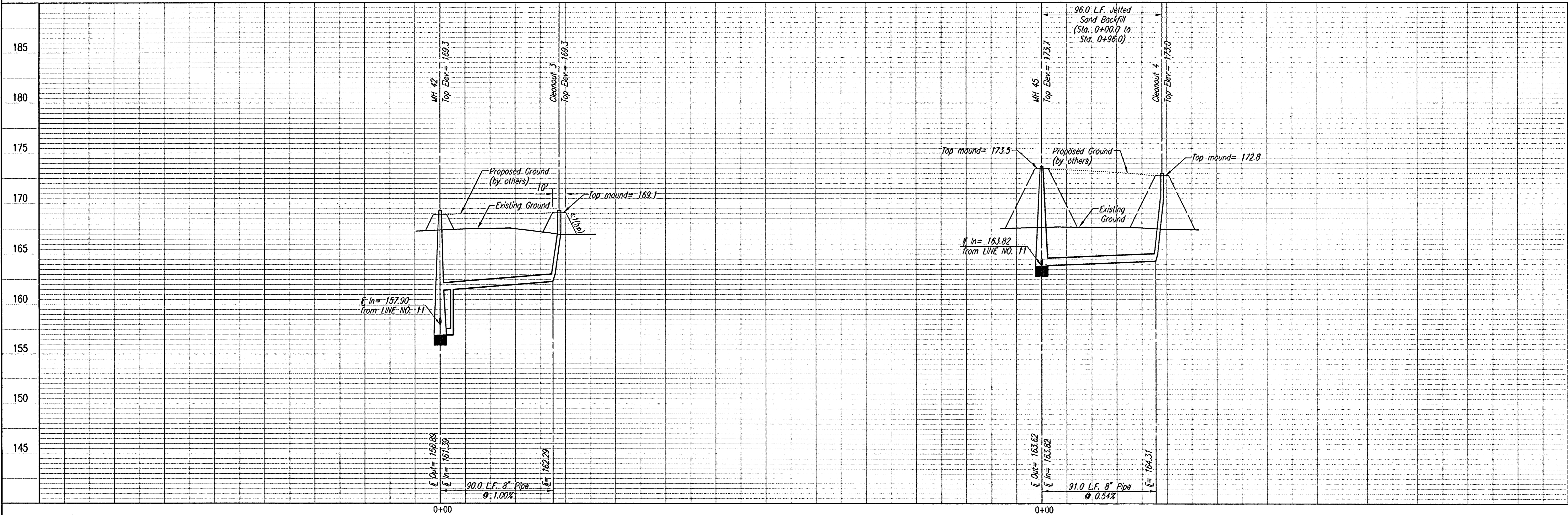


SEE SHEETS NO. 3, 4 & 5
 FOR PLAT COORDINATES



SANITARY SEWER LINE NO. 12

SANITARY SEWER LINE NO. 13



LARABEL-5 MAIN-7
 OF THE NORTHWEST INTERCEPTOR SEWER
SANITARY SEWER LINE NO. 12 & 13
 JAMES L. ARMOUR, P.E., ACTING CITY ENGINEER
 CITY OF WICHITA PROJECT NO. 488-33877

Professional Engineering Consultants, P.A.
 303 S. TOPKA • WICHITA, KANSAS 67202
 316-262-2691 • FAX 316-262-3003

Designed By MDK Job No. 35-04485-002
 Drawn By TLB Date September 2004