

FINAL PLAT

HAWTHORNE THIRD ADDITION

AN ADDITION TO WICHITA, SEDGWICK COUNTY, KANSAS

BM #31 "T" post 5'-4" x 5'-4" W. of SE. Cor. Williamsgate
 North line of Lot 22, Blk. 1.
 Elev. = 1364.243(NVD)
 176.84 City datum

BM #36 "T" post 5'-4" x 5'-4" W. of NW. Cor. Rosemont and Camden Chase - in Ret. "C".
 Rosemont and Camden Chase - in Ret. "C".
 Elev. = 1358.53(NVD)
 181.23 City datum

NE. Cor. SW. 1/4, Sec. 2, 1775, R2E, 6th P.M.
 Fnd. 3/4" Rebor w/ 1/16" Brass id. cap in Conc.

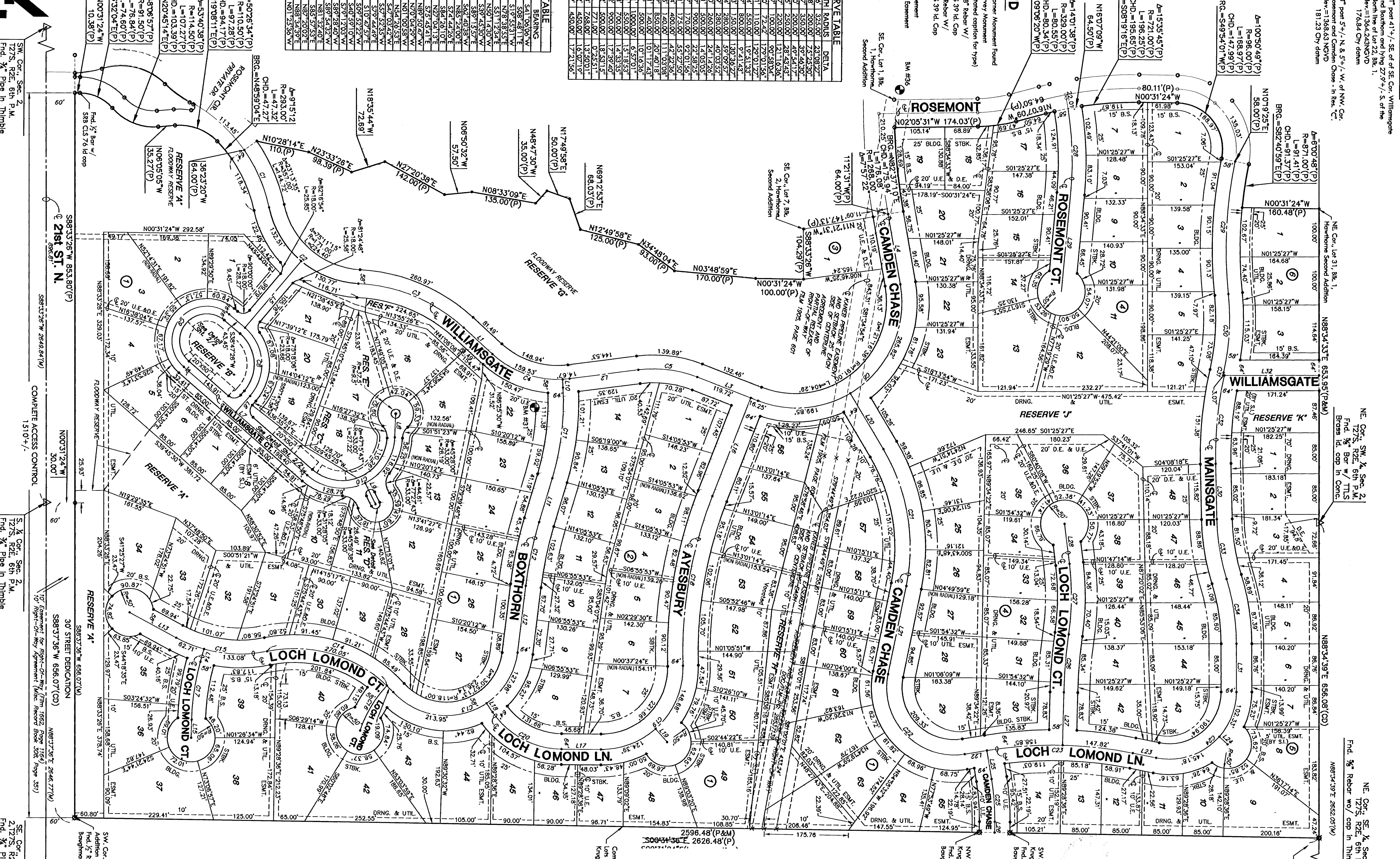
NE. Cor. SE. 1/4, Sec. 2, 1775, R2E, 6th P.M.
 Fnd. 3/4" Rebor w/ cap in Thimble

LEGEND

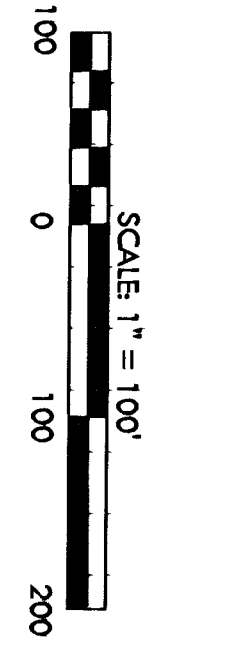
- △ = Section Corner Monument Found
- = Found Survey Monument (See annotated caption for type)
- = Found 5/8" Rebor w/ MKCC C/S 39 Id. Cap
- = Set 5/8" Rebor w/ MKCC C/S 39 Id. Cap
- X = Node
- U.E. = Utility Easement
- D.E. = Driveway Easement
- (D) = Ditched
- (P) = Platted
- (M) = Measured

CURVE	LENGTH	RADIUS	DELTA
C1	131.26	325.00	32.08227°
C2	174.20	350.00	32.44250°
C3	174.20	350.00	49.54127°
C4	123.33	250.00	28.48454°
C5	465.67	220.00	21.17636°
C6	358.77	190.00	30.58074°
C7	342.50	172.50	19.01155°
C8	190.64	500.00	10.51133°
C9	150.64	500.00	10.51133°
C10	150.64	500.00	10.51133°
C11	150.64	500.00	10.51133°
C12	150.64	500.00	10.51133°
C13	150.64	500.00	10.51133°
C14	150.64	500.00	10.51133°
C15	150.64	500.00	10.51133°
C16	150.64	500.00	10.51133°
C17	150.64	500.00	10.51133°
C18	150.64	500.00	10.51133°
C19	150.64	500.00	10.51133°
C20	150.64	500.00	10.51133°
C21	150.64	500.00	10.51133°
C22	150.64	500.00	10.51133°
C23	150.64	500.00	10.51133°
C24	150.64	500.00	10.51133°

LINE	LENGTH	BEARING
L1	81.49	S41°00'00"W
L2	174.53	S78°28'11"E
L3	148.14	N78°38'53"E
L4	181.52	S51°12'34"E
L5	45.58	N50°11'43"W
L6	342.31	S59°43'30"W
L7	49.28	S89°13'57"E
L8	49.28	S89°13'57"E
L9	17.00	N85°29'00"E
L10	17.00	N85°29'00"E
L11	96.07	S74°44'26"E
L12	110.00	S84°26'10"E
L13	110.00	S84°26'10"E
L14	27.44	S75°48'21"E
L15	31.70	N07°00'00"W
L16	31.70	N07°00'00"W
L17	22.37	N54°28'59"E
L18	36.54	S57°03'24"W
L19	133.22	S57°52'35"W
L20	187.42	S72°42'49"W
L21	49.22	S09°23'27"W
L22	49.22	S09°23'27"W
L23	60.14	S79°21'03"W
L24	60.14	S79°21'03"W
L25	22.19	S89°34'32"W
L26	33.31	S89°34'32"W
L27	33.31	S89°34'32"W
L28	115.82	N87°20'09"E
L29	100.75	N88°34'39"E
L30	200.41	N01°23'50"E



MIKEC
ENGINEERING
CONSULTANTS
411 N. WEISS ROAD
WICHITA, KS. 67208
316.688.9988



10/10