

SANITARY SEWER IMPROVEMENTS

LATERAL #401

FOUR MILE CREEK SEWER

Harrison Park 3rd Addition

Lot 1

Project Number: 468-84232

OCA Number: 744196

CITY OF WICHITA, KANSAS

James Armour, P.E. City Engineer

October 2006

Bench Marks:

- Webb Road and Lincoln
City of Wichita Bench Mark. Southwest corner of intersection. Northwest corner of traffic signal light pole base.
37.00 Ft. South of center line
33.90 Ft. West of center line
Elevation = 176.91 (City Datum)
1364.31 (MSL)
- Site Bench Mark
"□" Cut on Center, Front of Catch Basin, East Side of Webb Road West of Property.
Elevation = 179.40 (City Datum)
1366.80 (MSL)

Index

Cover Sheet	1
Plan/Profile	2
Copy Of Plat	3
BMP Erosion Details	Available On Request From Baughman Co.

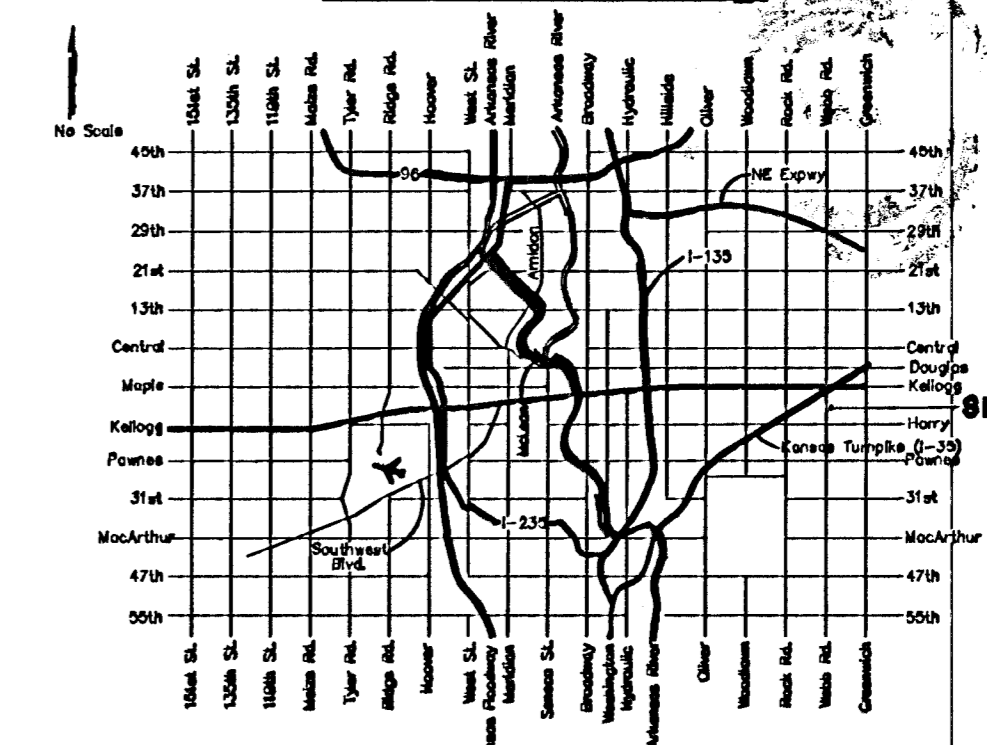
Legal Description

Lot 1, Harrison Park 3rd Addition, Wichita, Sedgwick County Kansas.

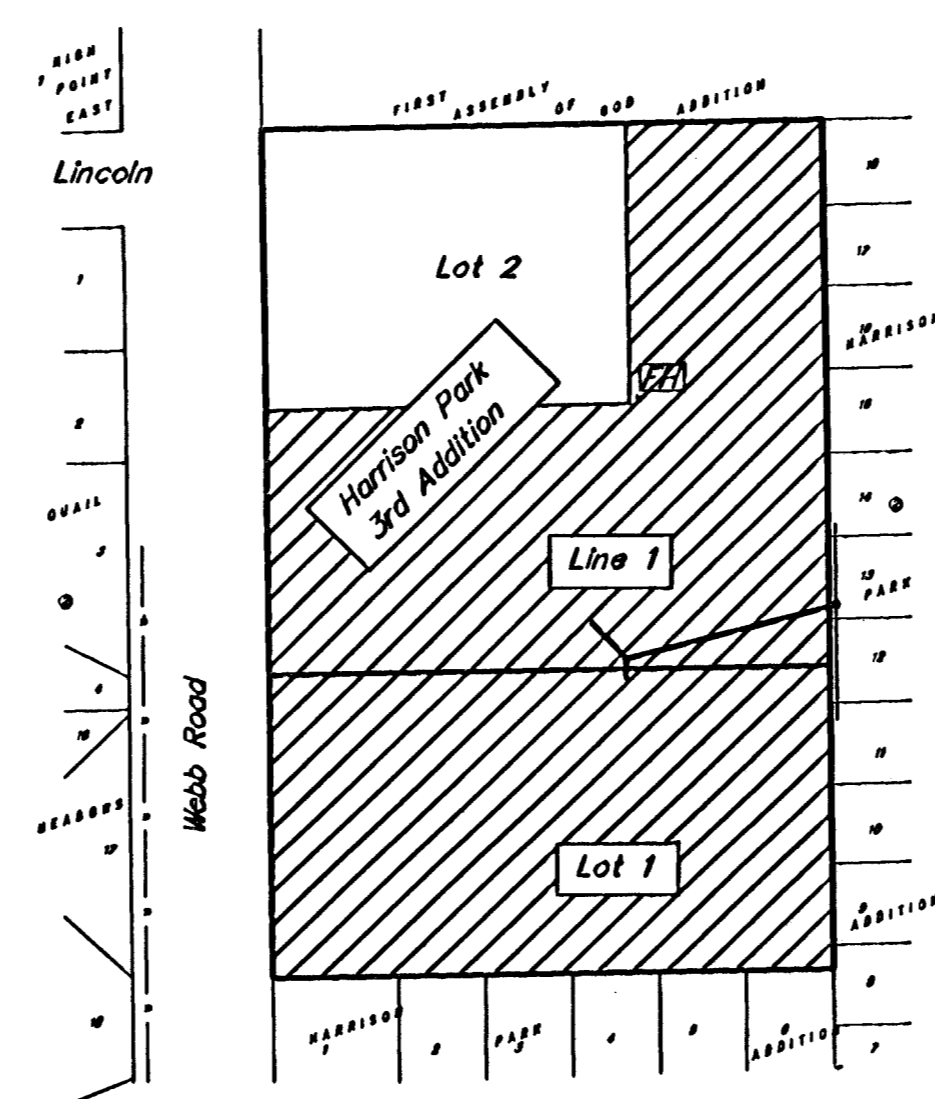
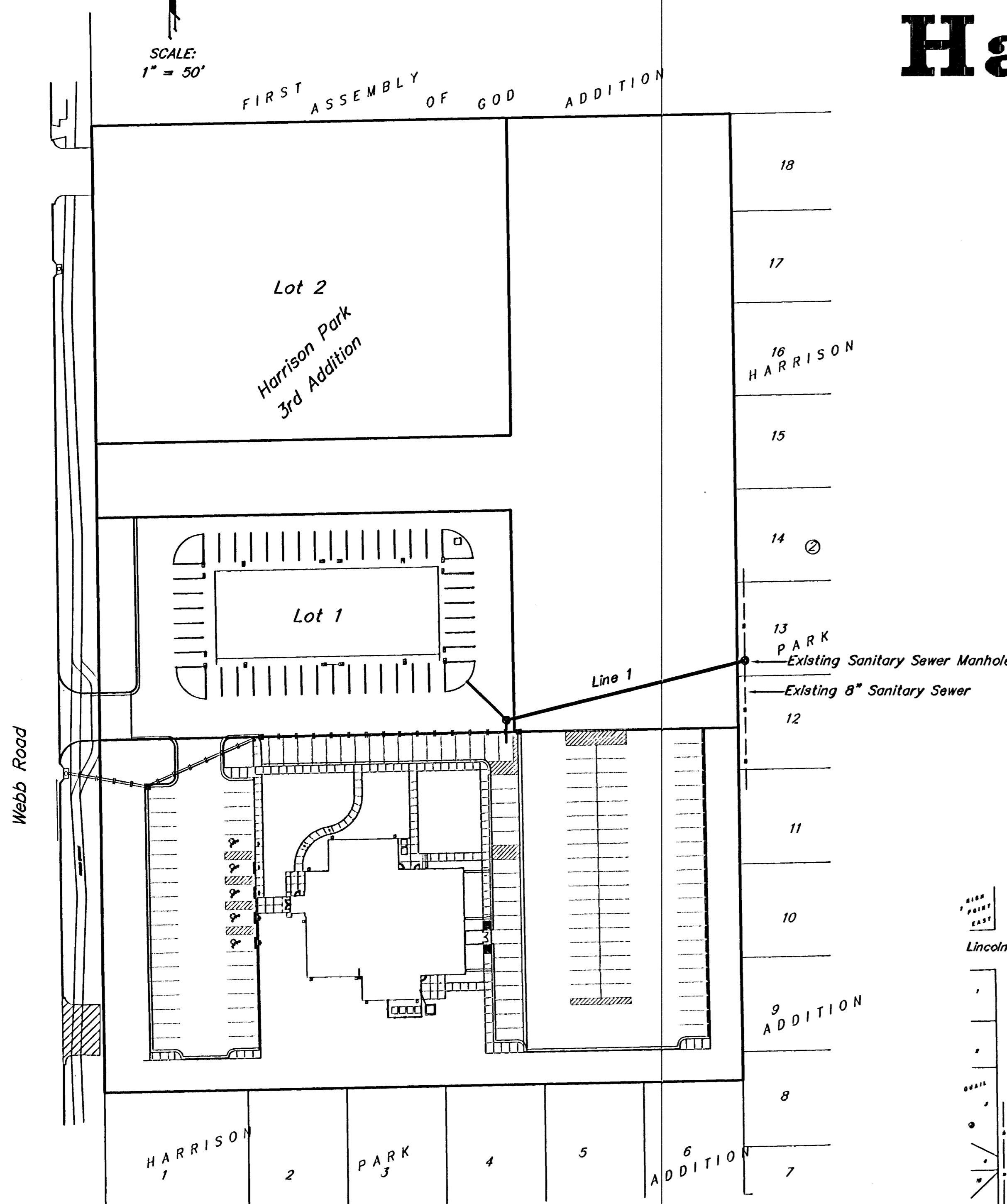
General Notes

- Contractor will be required to provide notice to utility companies a minimum of forty-eight (48) hours prior to any excavation, as follows:
Kansas One-Call 687-2470
The Contractor must notify the following in case of an emergency:
Cox Communications 262-4270
Kansas Gas Service Company 1-888-482-4950
Westar Energy (Electric) 383-8650
Aquila Energy (Gas) 1-800-303-0357
SBC (Telephone) 1-800-286-8313
City of Wichita Water Dept. (Water) 262-6000
City of Wichita Sewer Maint. (SS) 262-6000
City of Wichita Storm Sewer Maint. 268-4090
City of Wichita Traffic Maint. 268-4034
- Utility service lines, poles, valve boxes, meters, et cetera are to be adjusted as necessary by others prior to construction unless the plans specifically call for their adjustment by the Contractor or unless the plans specifically identify a utility to be adjusted by its owner during construction. Existing utilities and their location, as shown on the plans represent the best information obtainable for design and shall be field verified. The contractor will be required to work around existing utilities within the right-of-way which do not conflict with proposed construction.
- Rubble from the removal of miscellaneous structures and excess excavation which is to be wasted shall be disposed of on sites to be provided by the Contractor. These sites shall be approved by the Engineer as to suitability, appearance and site location. Locations that, in the opinion of the Engineer, will leave an unsightly appearance will not be approved. All disposal sites must be approved by the Kansas Department of Health and Environment. Material either stockpiled or disposed of in a flood plain would require a Kansas State Board of Agriculture permit. Any material dumped in waters of the United States or wetlands is subject to U.S. Corps. of Engineers permitting regulations. Any material buried or stockpiled beyond approved construction limits would require additional archaeological investigations unless buried in a previously approved borrow location.
- The Contractor shall give all property owners/tenants of developed property directly abutting the construction of this project a minimum of two (2) days notice prior to start of construction.
- Sewer lines & appurtenances shall be installed in accordance with the most recent edition of City of Wichita, Kansas Standard Specifications for the Construction of City Projects.
- All disturbed R/W areas not intended for pavement or sidewalk construction shall be seeded with Kansas Premium Fescue Blend at a rate of 8 lb./1000 Sq. Ft., fertilized with a 16-20-6 ratio at a rate of 4 lb./1000 Sq. Ft. and mulched with Prairie Hay at a rate of 92 lb./1000 Sq. Ft. Mulch shall be "patted" with forks or punched into soil to reduce loss due to wind.
- The Contractor shall be responsible for maintaining continuous flow of sewage through construction. Contractor's proposed method for maintaining sewage flow shall be approved by the Engineer. Cost of maintaining flow of sewage through construction will not be paid for directly and this cost shall be considered as subsidiary to the other pay items of work.

Location Map

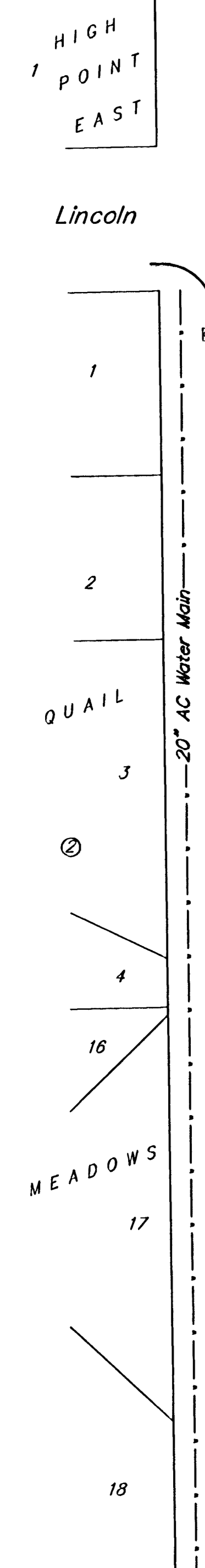


Baughman Company, P.A. 315 Ellis St. Wichita, KS 67211 P 316.262.7711 F 316.262.0149
ENGINEERING | SURVEYING | PLANNING | LANDSCAPE ARCHITECTURE



Benefit District

McCullough Excavation, Inc. - Contractor
Patton, City Inspector
Released 4/4/07
As-Built
Shubs
pdf by JDL 4/24/07



SCALE:
1" = 50'