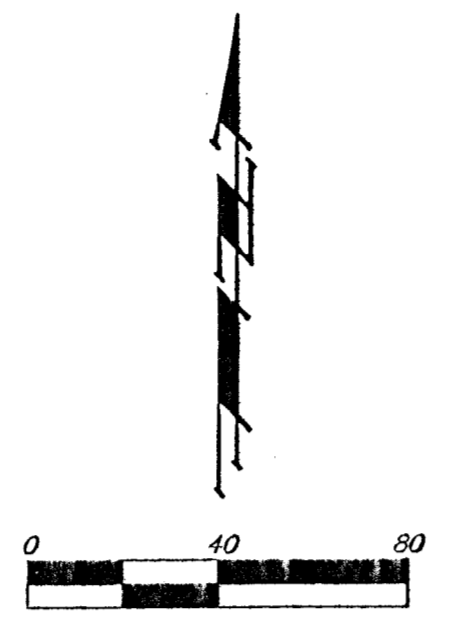
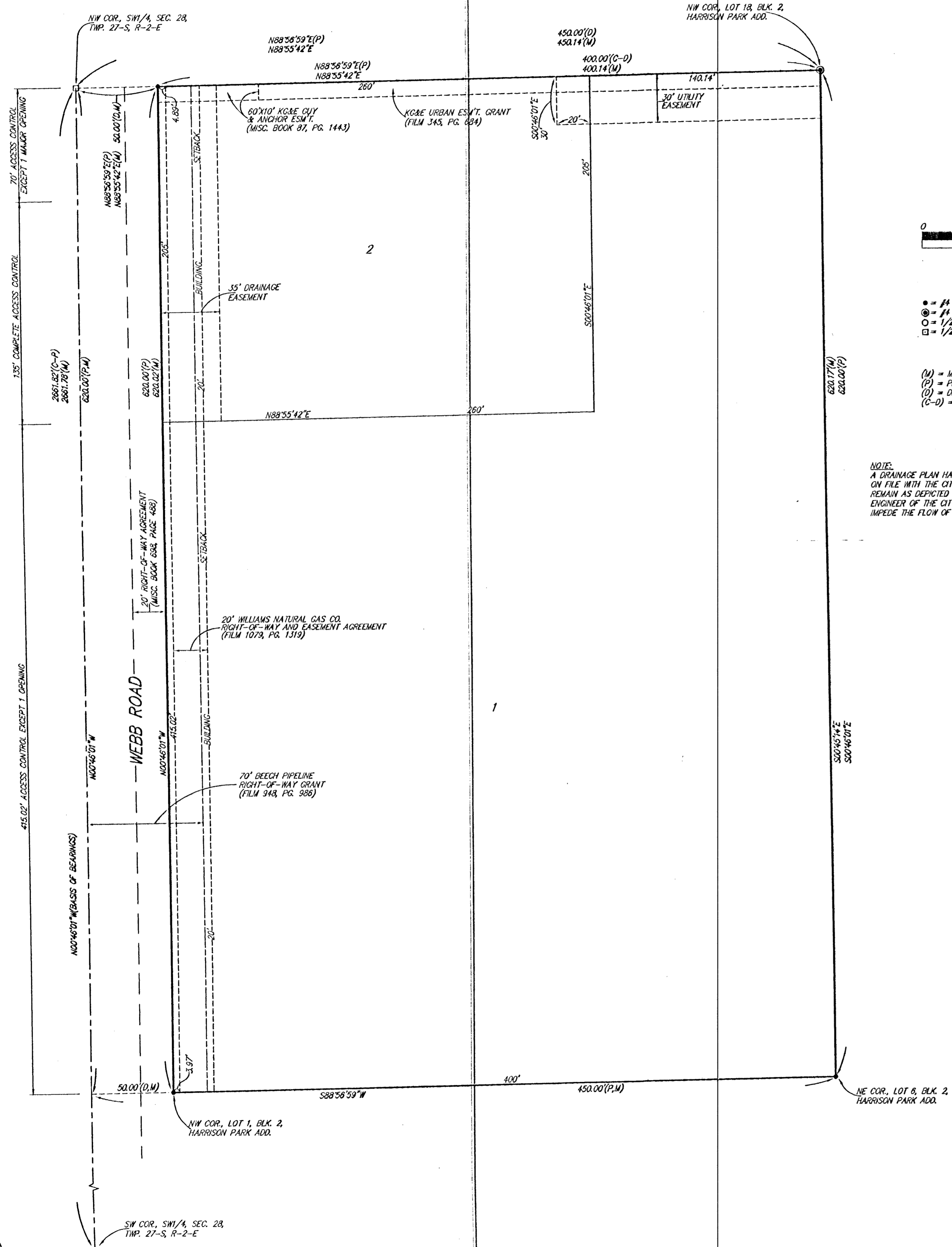


HARRISON PARK 3RD ADDITION

WICHITA, SEDGWICK COUNTY, KANSAS



- = #4 REBAR W/ "DAUGHMAN" CAP (SET)
 - ⊙ = #4 REBAR (FOUND)
 - = 1/2" IRON (FOUND)
 - = 1/2" IRON IN THIMBLE (FOUND)
- (M) = MEASURED
 (P) = PLATTED
 (C) = DESCRIBED
 (C-D) = CALCULATED PER DESCRIBED INFO

NOTES:
 A DRAINAGE PLAN HAS BEEN DEVELOPED FOR THIS SUBDIVISION AND IS ON FILE WITH THE CITY OF WICHITA, KANSAS. DRAINAGE INTENT SHALL REMAIN AS DEPICTED OR AS MODIFIED WITH THE APPROVAL OF THE CITY ENGINEER OF THE CITY OF WICHITA, KANSAS. NO OBSTRUCTIONS WHICH IMPERE THE FLOW OF THIS DRAINAGE PLAN SHALL BE ALLOWED.

State of Kansas) SS
 Sedgwick County) We, Baughman Company, P.A., Surveyors in aforesaid county and state do hereby certify that we have surveyed and platted "HARRISON PARK 3RD ADDITION", Wichita, Sedgwick County, Kansas and that the accompanying plat is a true and correct exhibit of the property surveyed, described as the SW 1/4 of Sec. 28, Twp. 27-S, R-2-E of the 6th P.M., Sedgwick County, Kansas, EXCEPT the South 1755 feet thereof, and EXCEPT the west 50 feet for road, and EXCEPT that part thereof platted as Harrison Park Addition.

Existing easements and dedications being vacated by virtue of K.S.A. 12-512(b).

Baughman Company, P.A.

Michael G. Conroy
 Michael G. Conroy, Surveyor

Know all men by these presents that we, the undersigned, have caused the land in the surveyors certificate to be platted into Lots to be known as "HARRISON PARK 3RD ADDITION", Wichita, Sedgwick County, Kansas. The utility easement is hereby granted as indicated for the construction and maintenance of all public utilities. All abutters rights of access to or from Webb Road over and across the west line of Lot 2 are hereby granted to the City of Wichita, Kansas provided, however, that said Lot 2 shall have access to Webb Road at one location over the north 70 feet of the west line of said Lot 2 as shall be determined by the City Engineer of the City of Wichita, Kansas. All abutters rights of access to or from Webb Road over and across the west line of Lot 1 are hereby granted to the City of Wichita, Kansas provided, however, that said Lot 1 shall have access to Webb Road at one location over the west line of said Lot 1 as shall be determined by the City Engineer of the City of Wichita, Kansas.

Harrison Park Associates, a Kansas General Partnership

W. Duane Wadley
 W. Duane Wadley, President
 Wadley Homes, Inc.

State of Kansas) SS
 Sedgwick County) The foregoing instrument acknowledged before me, this 14th day of MARCH, 2000, by W. Duane Wadley, President of Wadley Homes, Inc., as General Partner of Harrison Park Associates, a Kansas General Partnership, on behalf of the partnership.

Judith M. Terhune, Notary Public

We the undersigned holders of a mortgage on the above described property, do hereby consent to this plat of "HARRISON PARK 3RD ADDITION", Wichita, Sedgwick County, Kansas.

Hillcrest Bank f/k/a American National Bank

Timothy L. Binns
 Timothy L. Binns, V.P.

State of Kansas) SS
 Sedgwick County) The foregoing instrument acknowledged before me, this 24 day of MARCH, 2000, by ~~Stephanie M. Albright~~ Stephanie M. Albright, VICE PRESIDENT of Hillcrest Bank f/k/a American National Bank, on behalf of the partnership.

Stephanie M. Albright, Notary Public

I, the undersigned, holder of a mortgage on the above described property, do hereby consent to this plat of "HARRISON PARK 3RD ADDITION", Wichita, Sedgwick County, Kansas.

Thomas W. Boyd
 Thomas W. Boyd

State of Kansas) SS
 Sedgwick County) The foregoing instrument acknowledged before me, this 24 day of MARCH, 2000, by Thomas W. Boyd, a single person.

Virginia M. Edmiston
 Virginia M. Edmiston, Notary Public

My App't. Exp. 2-22-2001

This plat of "HARRISON PARK 3RD ADDITION", Wichita, Sedgwick County, Kansas has been submitted to and approved by the Wichita-Sedgwick County Metropolitan Area Planning Commission, Wichita, Kansas.

Dated this 29 day of November, 1999
 Wichita-Sedgwick County Metropolitan Area Planning Commission

Francis S. Gurofalo
 Francis S. Gurofalo, Chairman

Marvin S. Krout
 Marvin S. Krout, Secretary

This plat approved and all dedications shown hereon, accepted by the City Council of the City of Wichita, Kansas, and consent is hereby given for the formation of sanitary sewer districts within the boundary of this plat by the Board of Sedgwick County Commissioners as they deem necessary to provide sanitary sewer service to this area, this 16th day of May, 2000.

Bob Knight
 Bob Knight, Mayor

Patsy Ellis
 Patsy Ellis, Deputy City Clerk

Reviewed in accordance with K.S.A. 58-2005 on this 29th day of April, 2000

Tricia L. Robella
 Tricia L. Robella, L.S. #1246
 Deputy County Surveyor
 Sedgwick County, Kansas

Entered on transfer record this 7th day of September, 2000

James Alford
 James Alford, County Clerk

State of Kansas) SS
 Sedgwick County) This is to certify that this plat has been filed for record in the office of the Register of Deeds, this 9th day of September, 2000, at 11:40 o'clock A.M. and is duly recorded.

Bill Meek
 Bill Meek, Register of Deeds

Linda Kizzire, Deputy

1914514

20.00
OK