

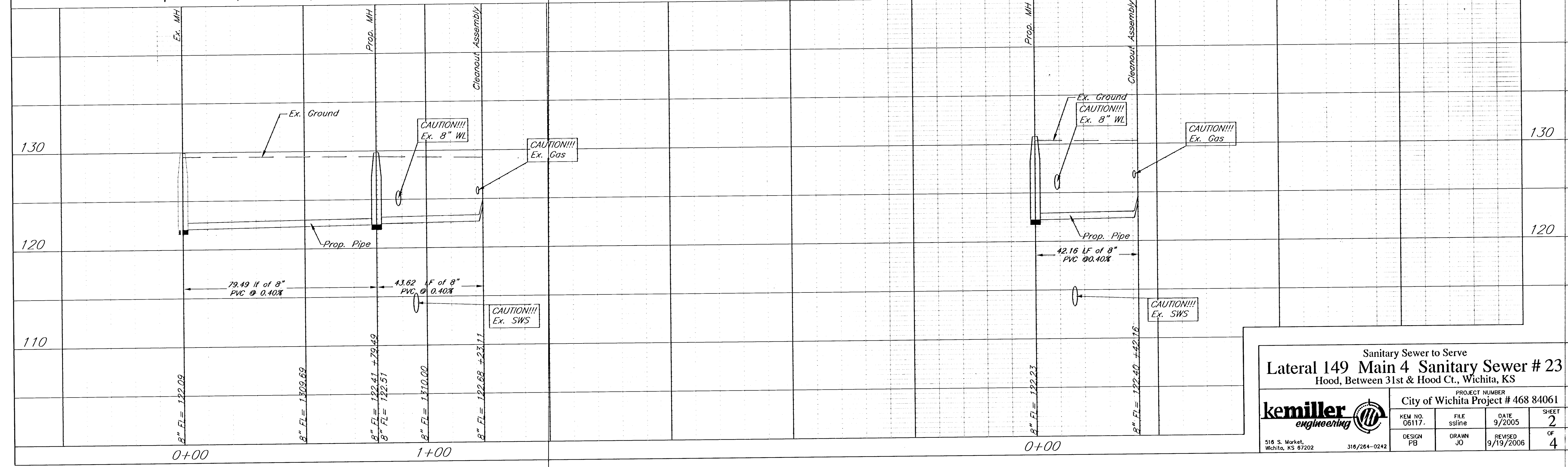
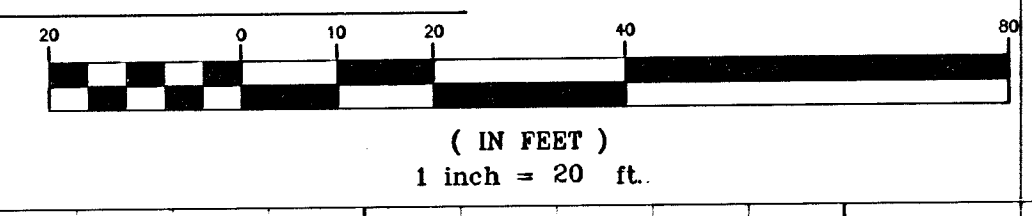
**Baseline 10+00**  
Intersection of  
31st St. North  
and Hood St.

**Benchmark:**  
"□" cut on North  
Return at 31st St.  
Hood St.  
Elev. = 129.39

**Control Points**  
CPI:  
BL Sta 13+34.52 30.22' Lt.  
NW Corn. IP, Cromwell Dr.  
& Hood.  
N=5,259.37 E=4,974.82  
CP2:  
BL Sta 15+86.62 30.00' Lt.  
SW Corn. IP, Hood Ct.  
& Hood.  
N=5,611.47 E=4,975.17

**Seeding Requirement**  
Reseed all disturbed area  
per City of Wichita Spec.  
and covered with Curlex  
of approved equal.

| Riser# | Line# | Sta.    | Distance From<br>Main to Riser (ft) | Distance From<br>Upstream MH | Distance From<br>Downstream MH |
|--------|-------|---------|-------------------------------------|------------------------------|--------------------------------|
| 1      | 1     | 1+23.11 | 4' Rt.                              | 1'                           | 43'                            |
| 2      | 1     | 1+23.11 | 4' Lt.                              | In line                      | 43'                            |
| 3      | 2     | 0+42    | 2' Rt.                              | In line                      | 42'                            |
| 4      | 2     | 0+42    | 3' Lt.                              | In line                      | 42'                            |



Sanitary Sewer to Serve  
**Lateral 149 Main 4 Sanitary Sewer # 23**  
Hood, Between 31st & Hood Ct., Wichita, KS

City of Wichita Project # 468 84061

**kemiller** engineering

|                |             |                   |         |
|----------------|-------------|-------------------|---------|
| KEM NO. 06117. | FILE ssline | DATE 9/2005       | SHEET 2 |
| DESIGN PB      | DRAWN JO    | REVISED 9/19/2006 | OF 4    |

516 S. Market, Wichita, KS 67202      316/264-0242