

LATERAL 58, MAIN 3, SOUTHWEST INTERCEPTOR SEWER SANITARY SEWER EXTENSION

Sycamore Pond Addition
PROJECT NO. 468-84191
OCA # 744193

GENERAL NOTES

Contractor will be required to provide a minimum advance notice of twenty-four (24) hours to utility companies prior to starting any excavation as follows:

Kansas One-Call 687-2470

The Contractor must notify the following in case of an emergency:

Cox Communications 262-0661
Kansas Gas Service 383-8600
Westar 383-8600
Aquila Net 1-800-303-0357
SBC 1-800-286-8313
City of Wichita Water Department 262-6000
City of Wichita Sewer Maintenance 262-6000

Underground utility service lines and overhead utility pole lines are to be adjusted as necessary by others prior to construction unless the plans specifically call for their adjustment by the Contractor or unless the plans specifically identify a utility to be adjusted by its owner during construction. Existing utilities and their location, as shown on the plans, represent the best information obtainable for design. Location information has been obtained from the various utility companies and is either from company record drawings or company-provided field locations. The Contractor will be required to work around existing utilities within the right-of-way which do not conflict with proposed construction.

A saw cut of at least one-half the depth of existing surface courses or one-fourth the depth of existing total pavement thickness shall be provided at locations where proposed construction abuts an existing surface course or pavement for which partial removal of that surface or pavement is required, except when such saw cuts are within three (3) feet of an existing joint the limits of removal shall be extended to the existing joint. Such saw cuts will not be paid for directly and this cost shall be considered as subsidiary to the removal of the surface or pavement.

Rubble from the removal of miscellaneous structures and excess excavation which is to be wasted shall be disposed of on sites to be provided by the Contractor. These sites shall be approved by the Engineer as to suitability, appearance and site location. Locations that, in the opinion of the Engineer, will leave an unsightly appearance will not be approved.

All disposal sites must be approved by the Kansas Department of Health and Environment. Material either stockpiled or disposed of in a flood plain would require a Kansas State Board of Agriculture permit. Any material dumped in waters of the United States or wetlands is subject to U.S. Corps permitting regulations. Any material buried or stockpiled beyond approved of Engineers construction limits would require additional archeological investigations unless buried in a previously approved borrow location.

The Engineer shall take field ties to all quarter section corners. The Contractor shall set a City survey monument in the required location where such quarter section corners fall within the limits of pavement construction. Survey monuments will be furnished by the City. The Engineer will accurately locate and install the iron at the quarter section corner. This work will not be paid for directly, but shall be considered subsidiary to the other pay items of work in the contract.

The Contractor shall notify pipeline companies at least 24 hours in advance of any work being performed across and/or adjacent to pipelines.

The Contractor shall give all property owners and/or tenants of developed property directly abutting the construction of this project a minimum of ten (10) days advance notice prior to start of construction.

The Contractor shall seed, fertilize and mulch all disturbed areas upon completion of construction. Incidental to the bid item for "Site Clearing and Restoration".

The Contractor shall mark all proposed MH's with a "T" post after construction.

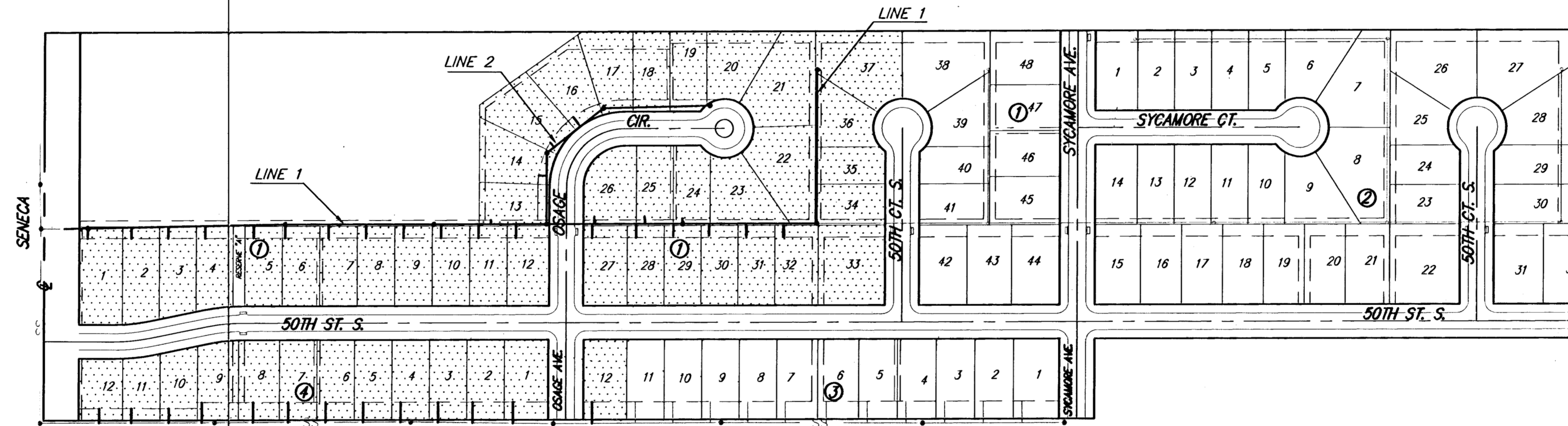
BENCH MARK

BENCH MARK: RAILROAD SPIKE IN WEST FACE OF POWER POLE, 30' EAST OF E OF SENECA AND 170' NORTH OF SUNRISE.

ELEV. = 1272.19 (NGVD)

INDEX OF SHEETS

1. TITLE SHEET
2. SS LINE 1
3. SS LINE 1 (2)
4. SS LINE 1 (3)
5. MH RING & COVER
6. TYPE P MH
7. SERVICE RISER ASSEMBLY
8. BMP 1
9. BMP 2
10. BMP 3
11. ADDITION BUBBLE MAP
12. SANITARY SEWER BUBBLE MAP
13. FINAL PLAT

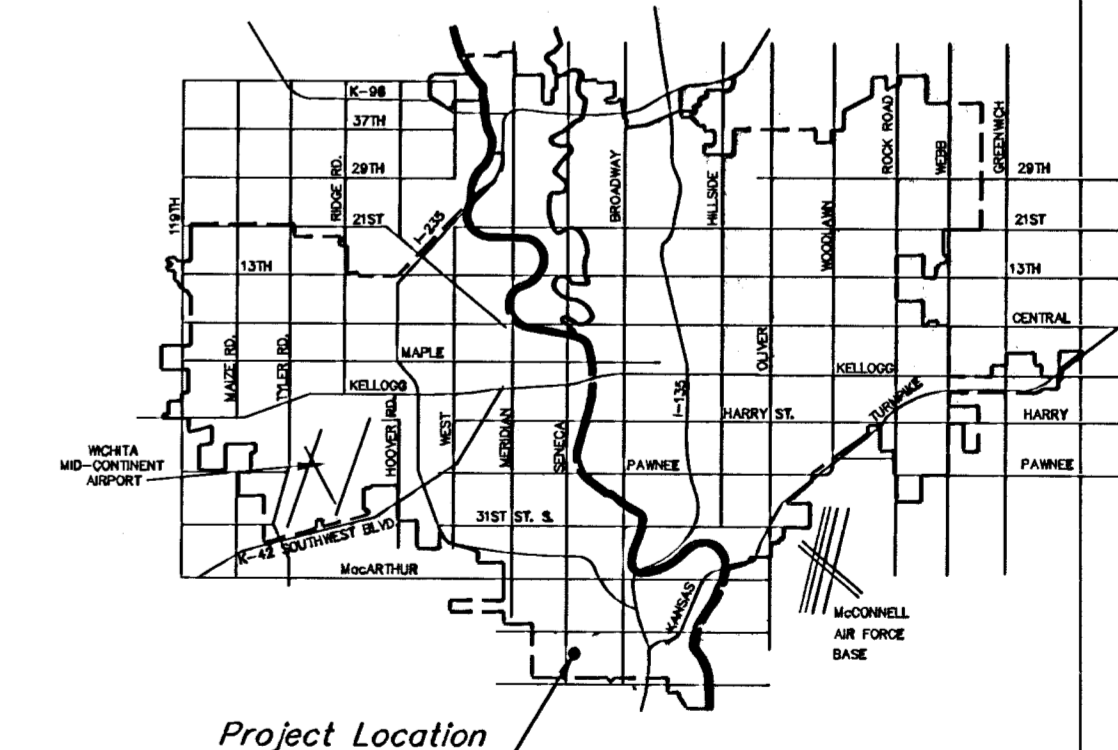


Note: Risers installed on existing SS line (Lot 21, Main 3, SWL 468-76-245-80328 Book D-287)

McCullough Excavation, Inc. - Contractor
Sholander, City-Inspector
Released 1/29/07
As-Built
Risers + Stubs
.pdf by JDL 2/28/07

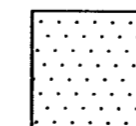


Scale: 1" = 150'



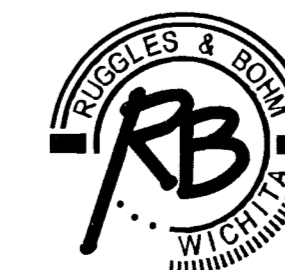
Project Location

VICINITY MAP



IMPROVEMENT DISTRICT

CITY OF WICHITA, KANSAS
JAMES ARMOUR, P.E. - CITY ENGINEER



Ruggles & Bohm, P.A.

Engineering, Surveying, Land Planning

924 North Main (316) 264-8008
Wichita, Kansas 67203 (316) 264-4621 fax
www.rbkansas.com E-mail: info@rbkansas.com