

STA 0+00, LINE 1  
CONNECT TO EXISTING 8" SS STUB  
CONTRACTOR TO VERIFY DEPTH AND  
LOCATION PRIOR TO CONSTRUCTION.

STA 0+40, LINE 1  
CONSTRUCT STANDARD TYPE 'P' MH  
TOP ELEV = 1270.3

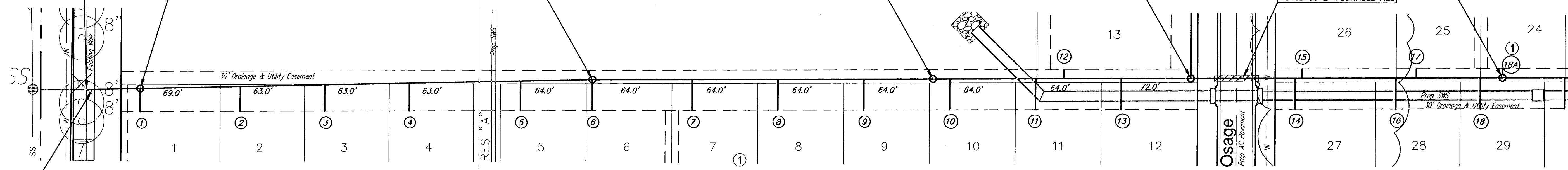
STA 3+77.40, LINE 1  
CONSTRUCT STANDARD TYPE 'P' MH  
TOP ELEV = 1270.3

STA 6+31.33, LINE 1  
CONSTRUCT STANDARD TYPE 'P' MH  
TOP ELEV = 1270.3

STA 8+23.82, LINE 1 =  
STA 0+00, LINE 2  
CONSTRUCT STANDARD TYPE 'P' MH  
TOP ELEV = 1272.4

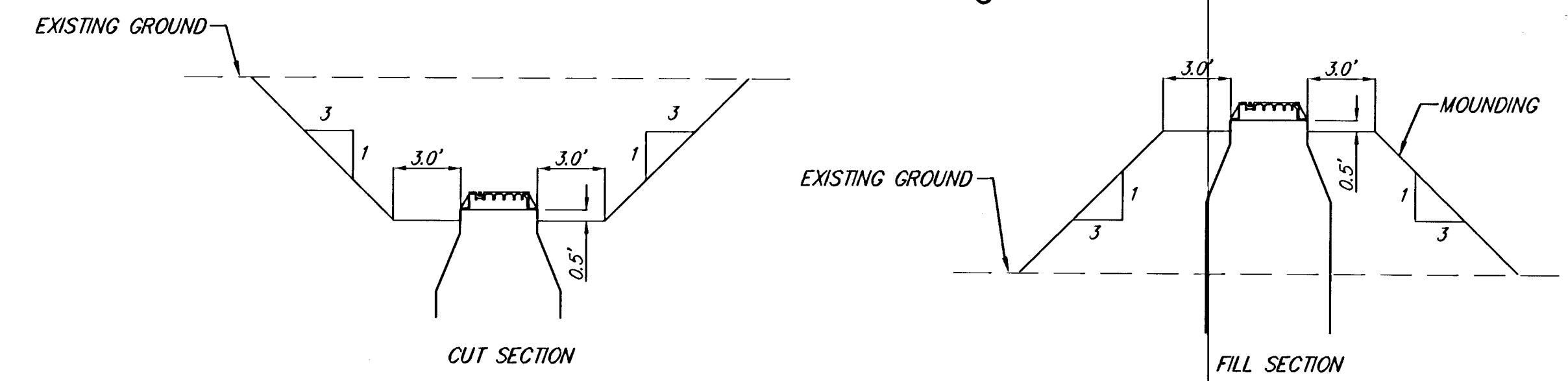
STA 10+56.28, LINE 1  
CONSTRUCT STANDARD TYPE 'P' MH  
TOP ELEV = 1274.0

REMOVE TREES AS  
NECESSARY FOR CONSTRUCTION



REMOVE AND REPLACE  
6" CONCRETE SIDEWALK  
AS NECESSARY FOR  
CONSTRUCTION

Manhole Grading Detail



SEWER SERVICE TABLE

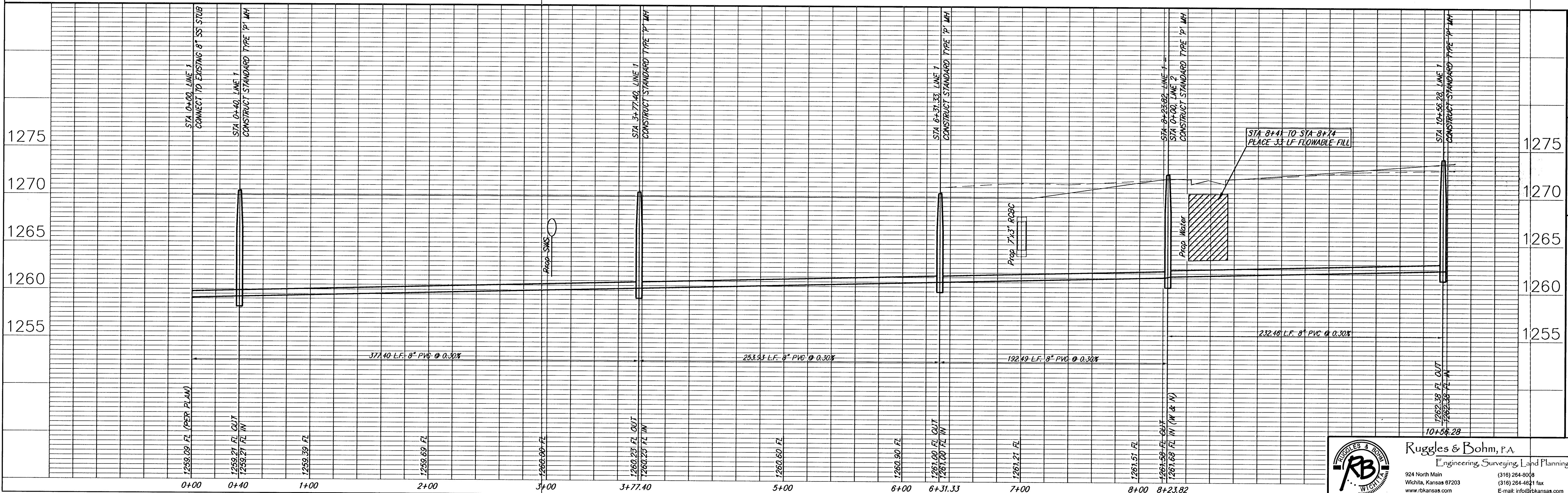
NUMBER	TYPE	LOCATION			FOR INFORMATION ONLY	
		LOT NO.	BLOCK NO.	LINE NO.	STATION\ DIRECTION	APPROXIMATE LENGTH 4" PIPE VERTICAL HORIZONTAL
1	4" MH Saddle	1	1	1	0+40/RL	8' 18'
2	8" X 4" Tee Saddle	2	1	1	1+14.75/RL	8' 19'
3	8" X 4" Tee Saddle	3	1	1	1+77.77/RL	8' 20'
4	8" X 4" Tee Saddle	4	1	1	2+40.78/RL	8' 21'
5	8" X 4" Tee Saddle	5	1	1	3+23.81/RL	8' 22'
6	8" X 4" Tee Saddle	6	1	1	3+77.40/RL	8' 23'
7	8" X 4" Tee Saddle	7	1	1	4+51.82/RL	8' 23'
8	8" X 4" Tee Saddle	8	1	1	5+15.82/RL	8' 23'
9	8" X 4" Tee Saddle	9	1	1	5+79.82/RL	8' 23'
10	8" X 4" Tee Saddle	10	1	1	6+43.82/RL	8' 23'
11	8" X 4" Tee Saddle	11	1	1	7+07.82/RL	8' 23'
12	8" X 4" Tee Saddle	13	1	1	7+28.82/Lt.	8' 7'

NOTE: Vertical Riser Pipe shall be extended to 2' minimum above ground water elevation and 4' maximum below proposed ground elevation.

SEWER SERVICE TABLE

NUMBER	TYPE	LOCATION			FOR INFORMATION ONLY	
		LOT NO.	BLOCK NO.	LINE NO.	STATION\ DIRECTION	APPROXIMATE LENGTH 4" PIPE VERTICAL HORIZONTAL
13	8" X 4" Tee Saddle	12	1	1	7+71.82/RL	7' 23'
14	8" X 4" Tee Saddle	27	1	1	9+01.82/RL	7' 23'
15	8" X 4" Tee Saddle	26	1	1	9+06.82/Lt.	7' 7'
16	8" X 4" Tee Saddle	28	1	1	9+76.82/RL	7' 23'
17	8" X 4" Tee Saddle	25	1	1	9+92.12/Lt.	7' 7'
18	8" X 4" Tee Saddle	29	1	1	10+39.82/RL	7' 23'
18A	4" MH Saddle	24	1	1	10+56.28/Lt.	7' 7'

NOTE: Vertical Riser Pipe shall be extended to 2' minimum above ground water elevation and 4' maximum below proposed ground elevation.



DESIGN EUG	DATE	REVIEW
UTILITY	May 25, 2006	
PROJECT NUMBER	485-8451	
DRAWING FILE	SS [SS Line 1]	

Sycamore Pond  
Sanitary Sewer Line 1  
WICHITA, KANSAS

**Ruggles & Bohm, P.A.**  
Engineering, Surveying, Land Planning  
924 North Main  
Wichita, Kansas 67203  
www.rbkansas.com  
(316) 264-8008  
(316) 264-4621 fax  
E-mail: info@rbkansas.com

RB JOB # 2877E  
SHEET 2 OF 13