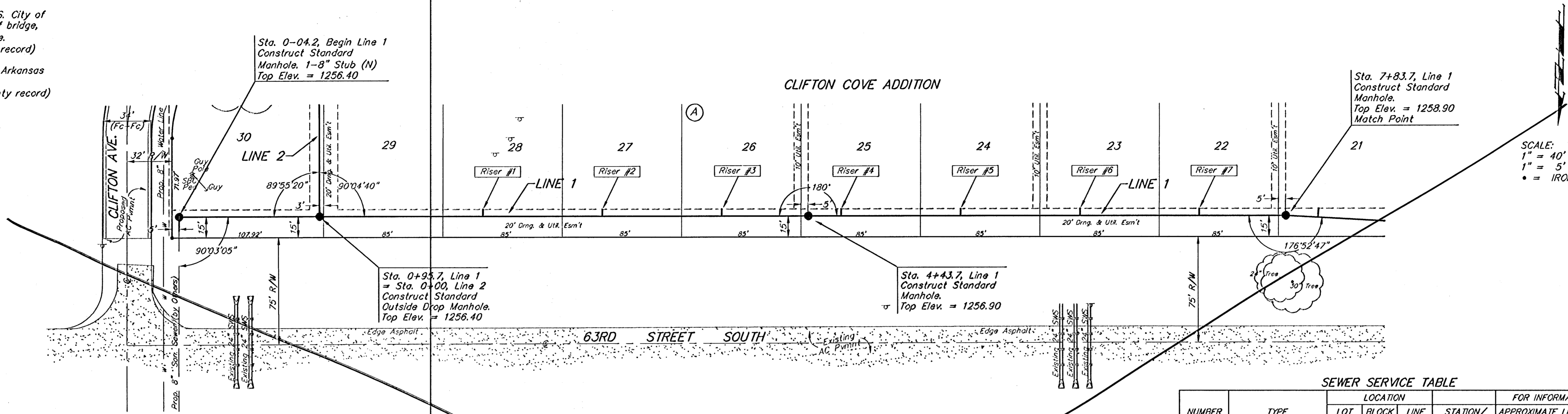


BENCHMARK:
 Arkansas River bridge & 63rd St. S. City of
 Wichita Benchmark Disc. SW Cor. of bridge,
 top of hubguard. 500'± E. of Grove.
 Elev. = 1269.95 NGVD29 (per City record)

Brass plate on the NE wingwall of Arkansas
 River bridge & 63rd St. S.
 Elev. = 1267.48 NGVD29 (per County record)



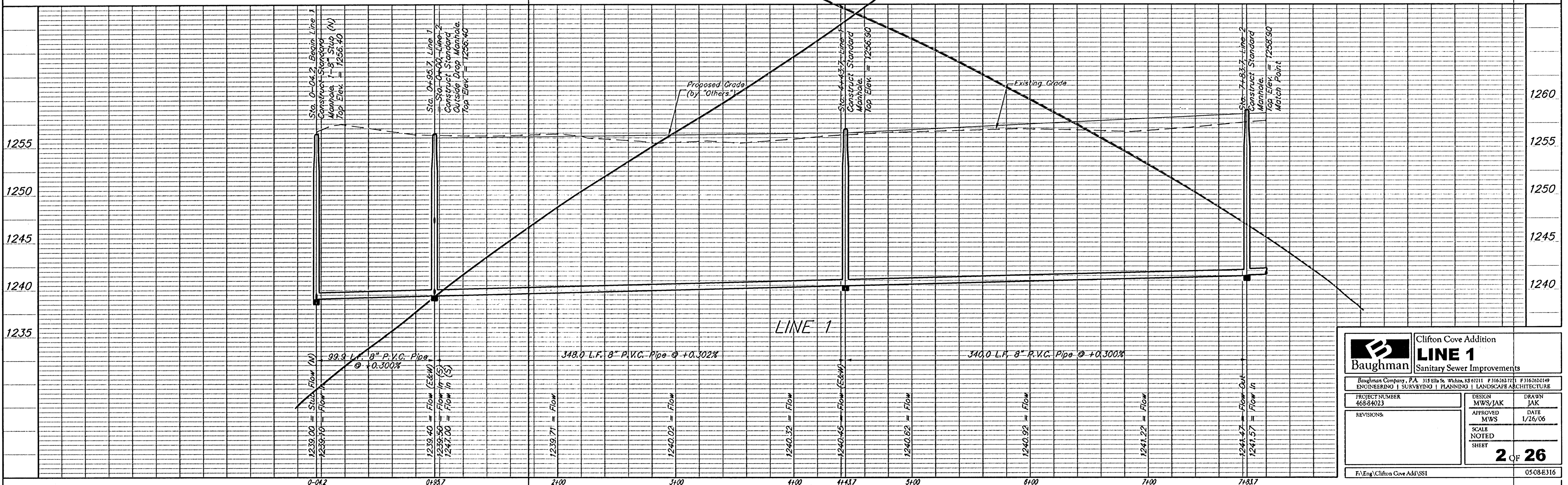
SCALE:
 1" = 40' HORIZONTAL
 1" = 5' VERTICAL
 • = IRON

SEE
 REVISED
 SHEET

SEWER SERVICE TABLE

NUMBER	TYPE	LOCATION			FOR INFORMATION ONLY	
		LOT NO.	BLOCK NO.	LINE NO.	STATION/DIRECTION	APPROXIMATE LENGTH 4" PIPE
1	8" X 4" Tee Saddle	28	A	1	2+11/Lt.	11' 3"
2	8" X 4" Tee Saddle	27	A	1	2+97/Lt.	11' 3"
3	8" X 4" Tee Saddle	26	A	1	3+82/Lt.	11' 3"
4	8" X 4" Tee Saddle	25	A	1	4+67/Lt.	11' 3"
5	8" X 4" Tee Saddle	24	A	1	5+52/Lt.	10.5' 3"
6	8" X 4" Tee Saddle	23	A	1	6+37/Lt.	9.5' 3"
7	8" X 4" Tee Saddle	22	A	1	7+22/Lt.	9' 3"

NOTE: Vertical Riser Pipe shall be extended to 2' minimum above ground water elevation and 4' maximum below proposed ground elevation.



	Clifton Cove Addition	
	LINE 1	
Sanitary Sewer Improvements		
<small>Baughman Company, P.A. 315 Ellis St. Wichita, KS 67211 P 3162627711 F 3162620149 ENGINEERING SURVEYING PLANNING LANDSCAPE ARCHITECTURE</small>		
PROJECT NUMBER 46884023	DESIGN MWS/JAK	DRAWN JAK
REVISIONS:	APPROVED MWS	DATE 1/26/06
SCALE NOTED SHEET		2 OF 26
<small>F:\Eng\Clifton Cove Add\SS1</small>		<small>0508-E316</small>