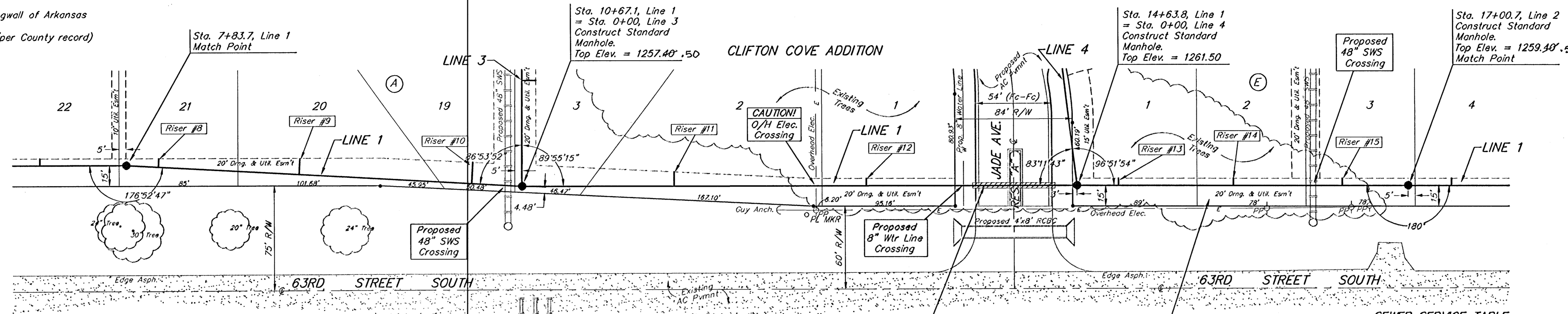


**BENCHMARK:**  
 Arkansas River bridge & 63rd St. S. City of  
 Wichita Benchmark Disc. SW Cor. of bridge,  
 top of hubguard. 500'± E. of Grove.  
 Elev. = 1269.95 NGVD29 (per City record)

Brass plate on the NE wingwall of Arkansas  
 River bridge & 63rd St. S.  
 Elev. = 1267.48 NGVD29 (per County record)



SCALE:  
 1" = 40' HORIZONTAL  
 1" = 5' VERTICAL  
 • = IRON

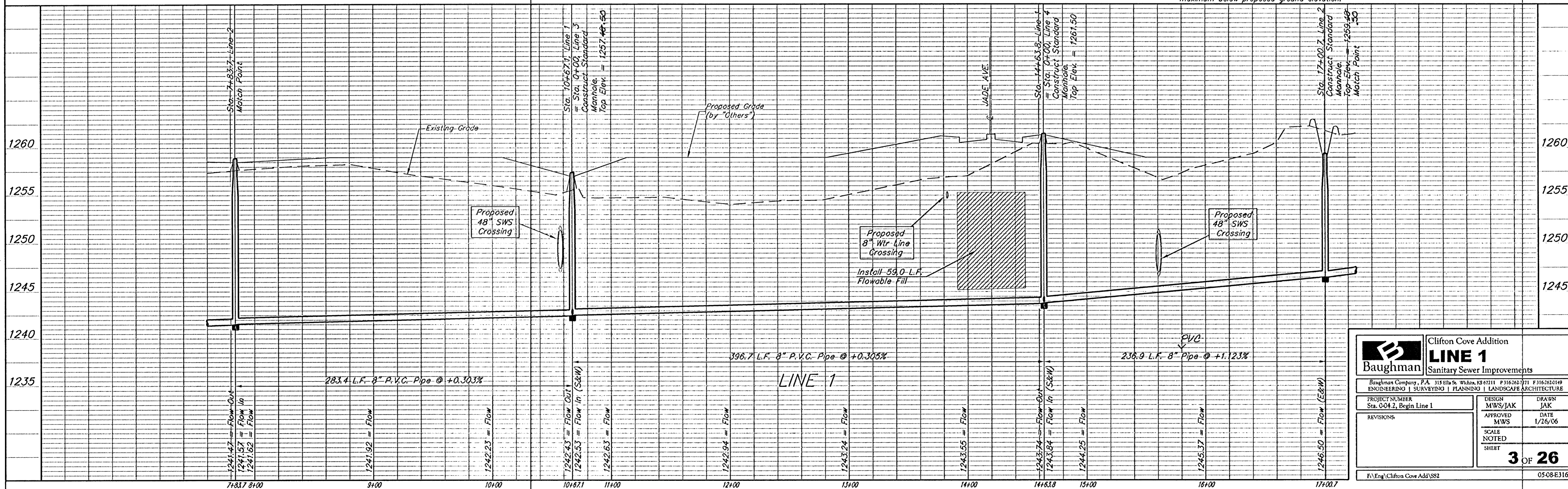
Sta. 13+89.2 to Sta. 14+48.2  
 Install 59.0 L.F. Flowable Fill  
 Per City Specifications.  
 Fill to Elev. 1253.30

Remove Existing Trees Only  
 as Necessary for Construction.  
 Cost to be Included in Bid Item  
 "Site Clearing & Restoration"

SEWER SERVICE TABLE

NUMBER	TYPE	LOCATION			FOR INFORMATION ONLY		
		LOT NO.	BLOCK NO.	LINE NO.	STATION/DIRECTION	APPROXIMATE LENGTH 4" PIPE	
					VERTICAL	HORIZONTAL	
8	8" X 4" Tee Saddle	21	A	1	8+07/Lt.	09.2 12'	6.5'
9	8" X 4" Tee Saddle	20	A	1	9+07/Lt.	10.2 12'	11.5'
10	8" X 4" Tee Saddle	19	A	1	10+37/Lt.	32.7 10'	15.5'
11	8" X 4" Tee Saddle	2	A	1	11+78/Lt.	78.5 8.5'	10'
12	8" X 4" Tee Saddle	1	A	1	13+37/Lt.	13.5 9'	5'
13	8" X 4" Tee Saddle	1	E	1	14+94/Lt.	96.5 11'	5'
14	8" X 4" Tee Saddle	2	E	1	15+78/Lt.	74 9'	5'
15	8" X 4" Tee Saddle	3	E	1	16+54/Lt.	55.5 8'	5'

NOTE: Vertical Riser Pipe shall be extended to 2' minimum above ground water elevation and 4' maximum below proposed ground elevation.



	Clifton Cove Addition	
	<b>LINE 1</b>	
Sanitary Sewer Improvements		
<small>Baughman Company, P.A. 315 Ella St. Wichita, KS 67211 P316262771 F3162620149          ENGINEERING   SURVEYING   PLANNING   LANDSCAPE ARCHITECTURE</small>		
PROJECT NUMBER Sta. 0+0.2, Begin Line 1	DESIGN MWS/JAK	DRAWN JAK
REVISIONS:	APPROVED MWS	DATE 1/26/06
SCALE NOTED		SHEET
		<b>3 OF 26</b>
F:\Eng\Clifton Cove Add\SS2		05-08-E316