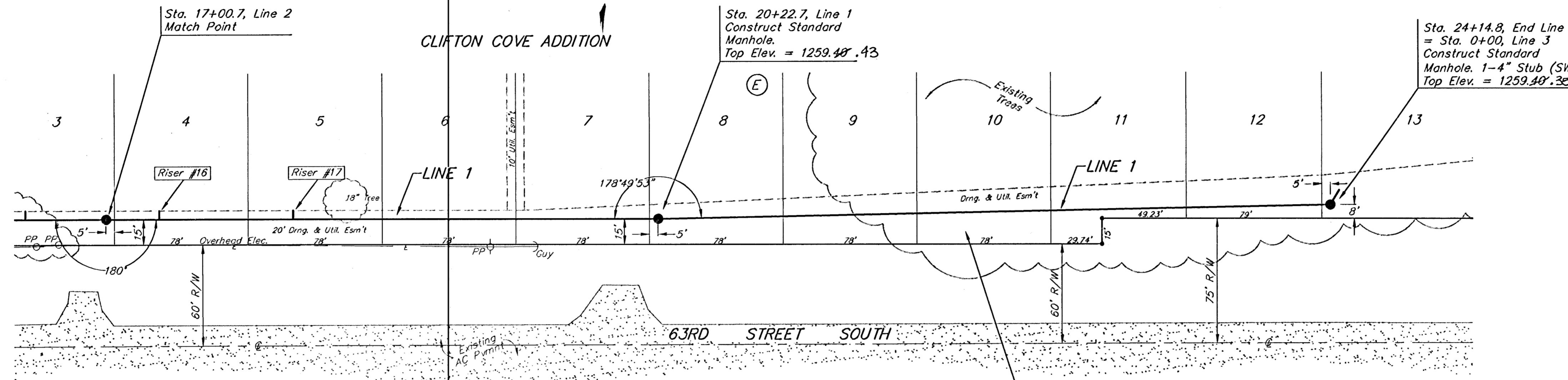


**BENCHMARK:**  
 Arkansas River bridge & 63rd St. S. City of  
 Wichita Benchmark Disc. SW Cor. of bridge,  
 top of hubguard. 500'± E. of Grove.  
 Elev. = 1269.95 NGVD29 (per City record)

Brass plate on the NE wingwall of Arkansas  
 River bridge & 63rd St. S.  
 Elev. = 1267.48 NGVD29 (per County record)

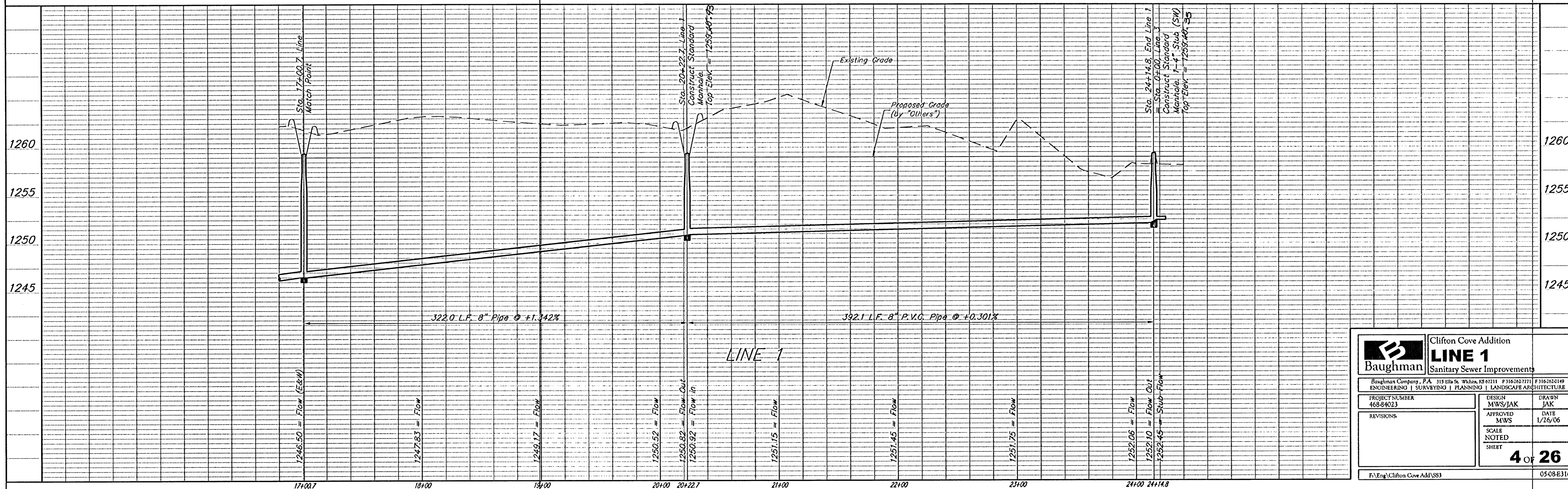
SCALE:  
 1" = 40' HORIZONTAL  
 1" = 5' VERTICAL  
 • = IRON



SEWER SERVICE TABLE

NUMBER	TYPE	LOCATION			FOR INFORMATION ONLY		
		LOT NO.	BLOCK NO.	LINE NO.	STATION/DIRECTION	APPROXIMATE LENGTH 4" PIPE	
16	8" X 4" Tee Saddle	4	E	1	17+32/Lt.	33'	7'
17	8" X 4" Tee Saddle	5	E	1	18+10/Lt.	6'	5'

NOTE: Vertical Riser Pipe shall be extended to 2' minimum above ground water elevation and 4' maximum below proposed ground elevation.



**Baughman** Clifton Cove Addition  
**LINE 1**  
 Sanitary Sewer Improvements

Baughman Company, P.A. 315 Ellis St. Wichita, KS 67211 P 316-263-7771 F 316-262-6149  
 ENGINEERING | SURVEYING | PLANNING | LANDSCAPE ARCHITECTURE

PROJECT NUMBER: 468-84023 DESIGN: MWS/JAK DRAWN: JAK  
 APPROVED: MWS DATE: 1/26/06

REVISIONS:

SCALE: NOTED SHEET: **4 OF 26**

F:\Eng\Clifton Cove Add\SS3 05-08-E316