

BENCHMARK:
 Arkansas River bridge & 63rd St. S. City of
 Wichita Benchmark Disc. SW Cor. of bridge,
 top of hubguard, 500'± E. of Grove.
 Elev. = 1269.95 NGVD29 (per City record)

Brass plate on the NE wingwall of Arkansas
 River bridge & 63rd St. S.
 Elev. = 1267.48 NGVD29 (per County record)

Remove Existing Trees Only
 as Necessary for Construction.
 Cost to be Included in Bid Item
 "Site Clearing & Restoration"

Proposed
 8" Wtr Line
 Crossing

CLIFTON COVE ADDITION

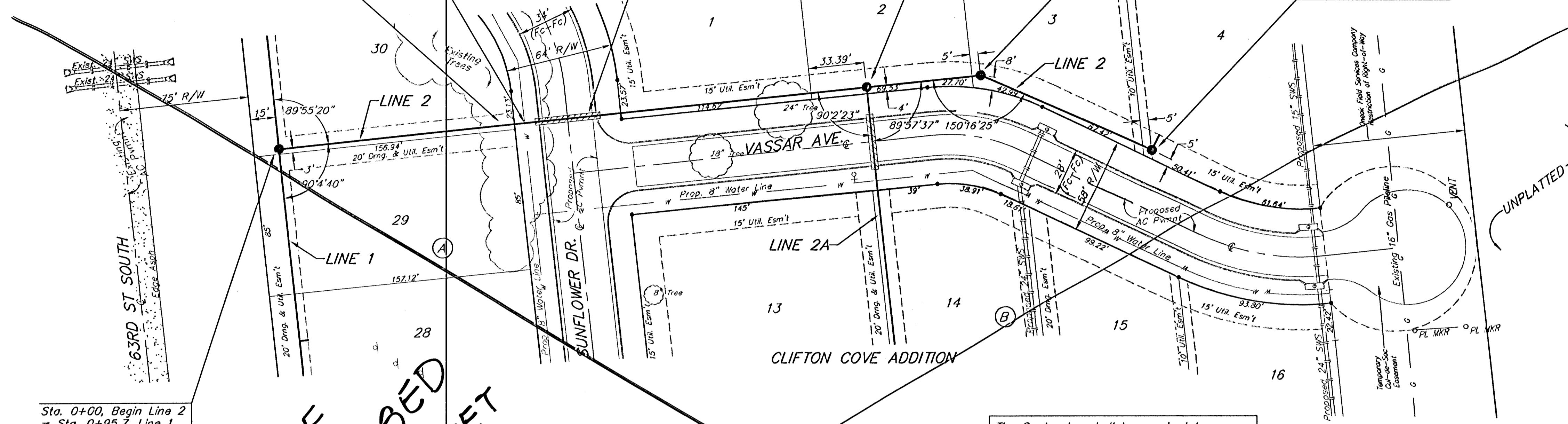
Sta. 1+54.4 to Sta. 1+93.4
 Install 39.0 L.F. Flowable Fill
 Per City Specifications.
 Fill to Elev. 1255.50

Sta. 3+53.9, Line 2
 = Sta. 0+00, Line 2A
 Construct Standard
 Manhole.
 Top Elev. = 1258.80

Sta. 4+22.6, Line 2
 Construct Standard
 Manhole.
 Top Elev. = 1258.50

Sta. 5+34.5, End Line 2
 Construct Standard
 Manhole. 1'-4" Stub (NE)
 Top Elev. = 1258.50

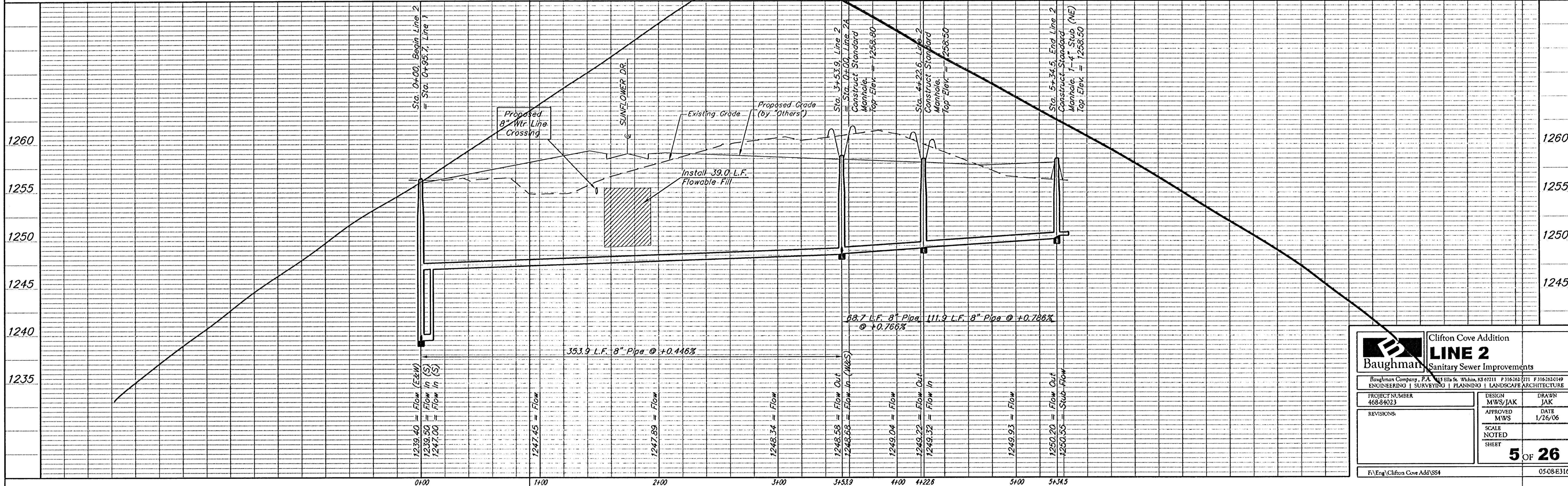
SCALE:
 1" = 40' HORIZONTAL
 1" = 5' VERTICAL
 • = IRON



Sta. 0+00, Begin Line 2
 = Sta. 0+95.7, Line 1

SEE
 REVISED
 SHEET

The Contractor shall be required to
 backfill trench with sand from Sta. 1+93.4
 to Sta. 5+34.5, Line 2. To be bid as "L.F.
 Sand Backfill Jetted and Vibrated"



Baughman		Clifton Cove Addition	
LINE 2		Sanitary Sewer Improvements	
Baughman Company, P.A. 1315 S. 10th St., Wichita, KS 67211 P 316.263.0711 F 316.263.0149 ENGINEERING SURVEYING PLANNING LANDSCAPE ARCHITECTURE			
PROJECT NUMBER 468-84023	DESIGN MWS/JAK	DRAWN JAK	
REVISIONS:	APPROVED MWS	DATE 1/26/06	
	SCALE NOTED	SHEET	
		5 OF 26	
F:\Eng\Clifton Cove Add\SS4			0508-E316