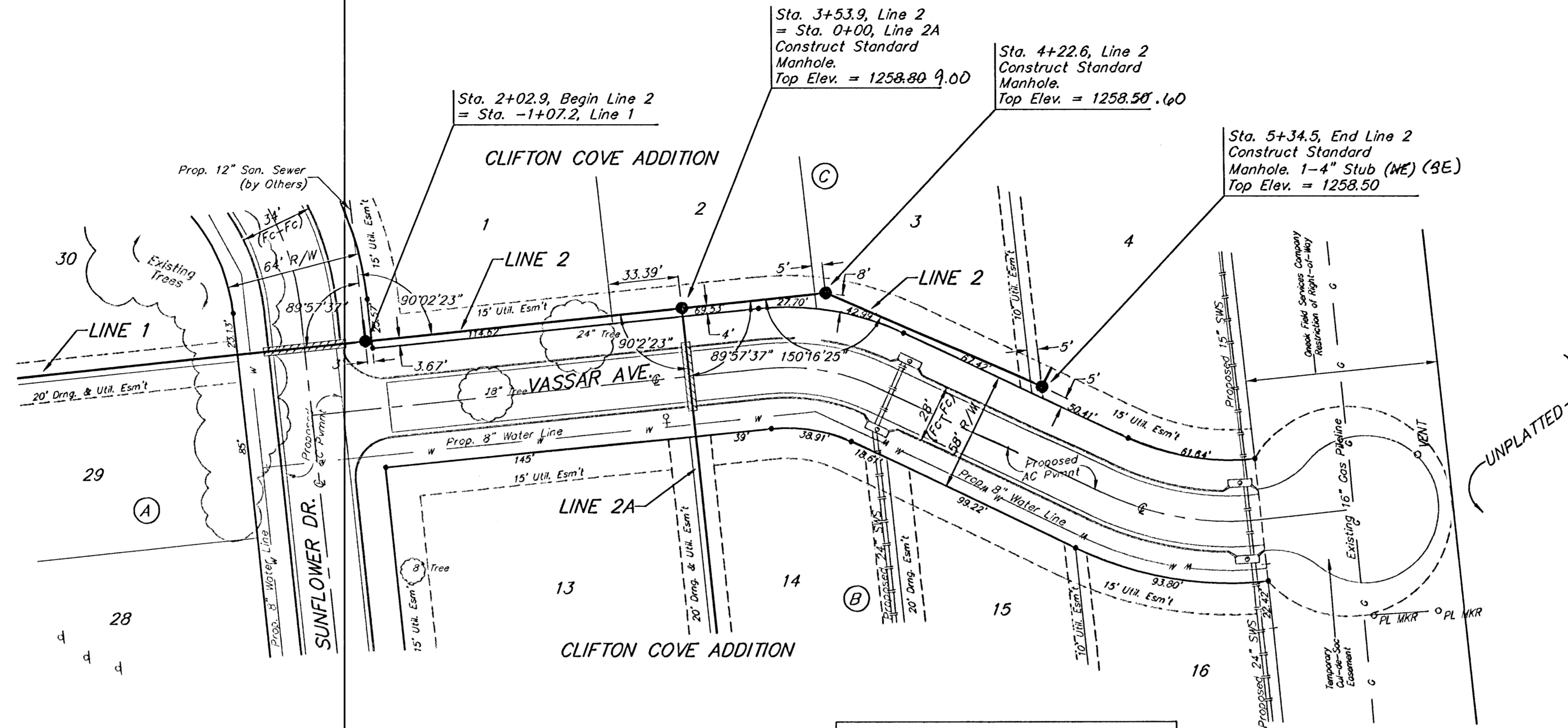
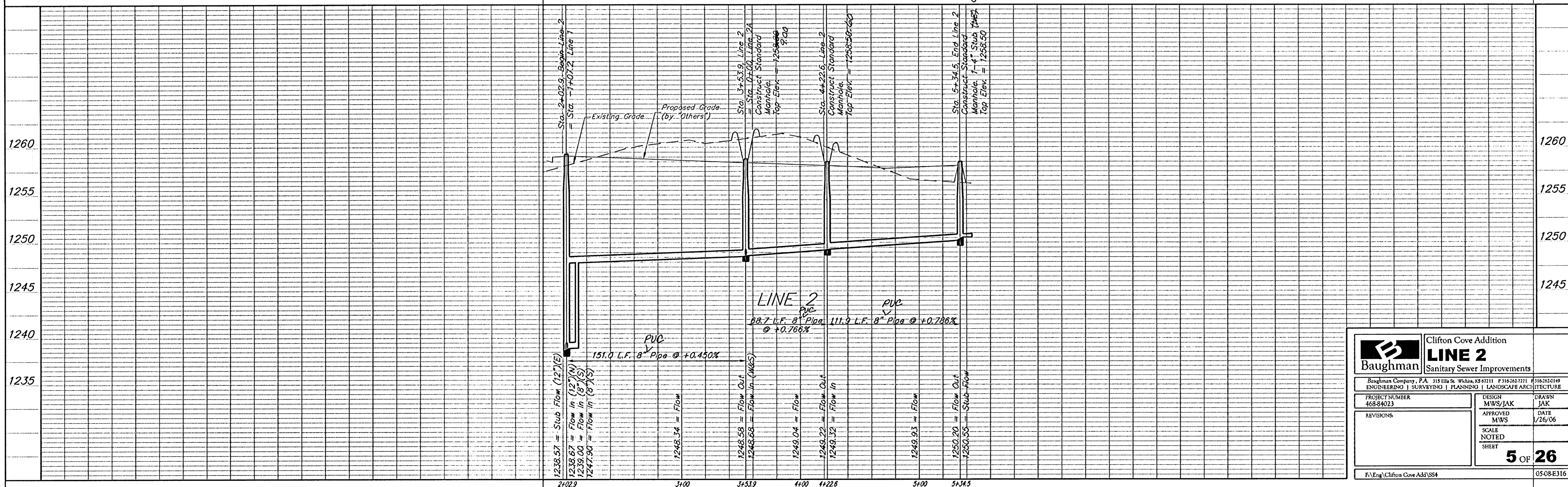


**BENCHMARK:**  
 Arkansas River bridge & 63rd St. S. City of Wichita Benchmark Disc. SW Cor. of bridge, top of hubguard. 500'± E. of Grove.  
 Elev. = 1269.95 NGVD29 (per City record)  
 Brass plate on the NE wingwall of Arkansas River bridge & 63rd St. S.  
 Elev. = 1267.48 NGVD29 (per County record)



SCALE:  
 1" = 40' HORIZONTAL  
 1" = 5' VERTICAL  
 • = IRON

The Contractor shall be required to backfill trench with sand from Sta. 2+02.9 to Sta. 5+34.5, Line 2. To be bid as "L.F. Sand Backfill Jetted and Vibrated"



	Clifton Cove Addition	
	<b>LINE 2</b>	
Sanitary Sewer Improvements		
<small>Baughman Company, P.A. 315 Ellis St. Wichita, KS 67211 P 316-262-7211 F 316-262-0149        ENGINEERING   SURVEYING   PLANNING   LANDSCAPE ARCHITECTURE</small>		
PROJECT NUMBER 468-84023	DESIGN MWS/JAK	DRAWN JAK
REVISIONS:	APPROVED MWS	DATE 1/26/06
SCALE NOTED SHEET		<b>5 OF 26</b>
<small>F:\Eng\Clifton Cove Add\SS4</small>		<small>05-08-E316</small>