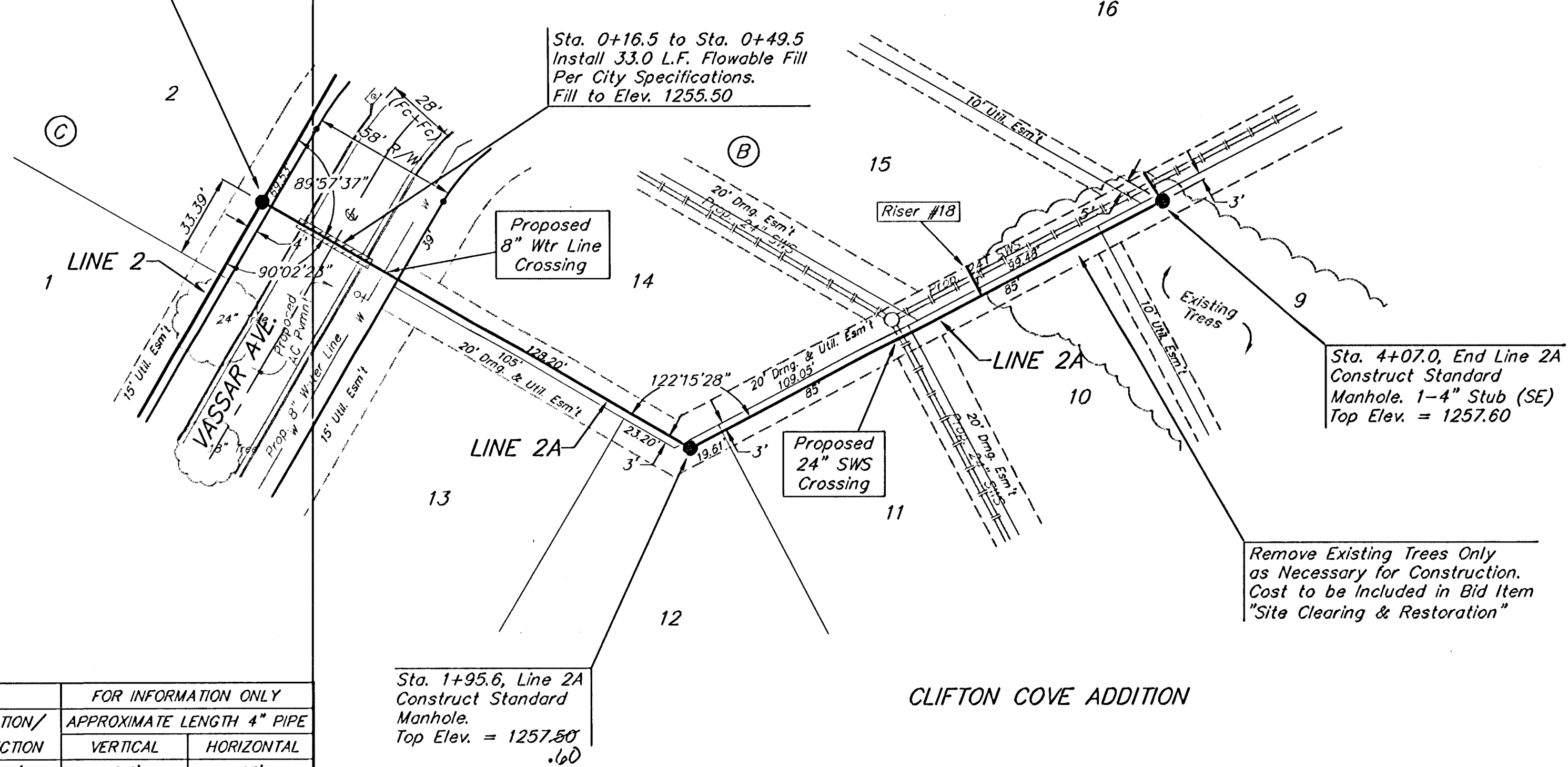


BENCHMARK:
 Arkansas River bridge & 63rd St. S. City of
 Wichita Benchmark Disc. SW Cor. of bridge,
 top of hubguard, 500'± E. of Grave.
 Elev. = 1269.95 NGVD29 (per City record)

Brass plate on the NE wingwall of Arkansas
 River bridge & 63rd St. S.
 Elev. = 1267.48 NGVD29 (per County record)

Sta. 0+00, Begin Line 2A
 = Sta. 3+53.9, Line 2

CLIFTON COVE ADDITION

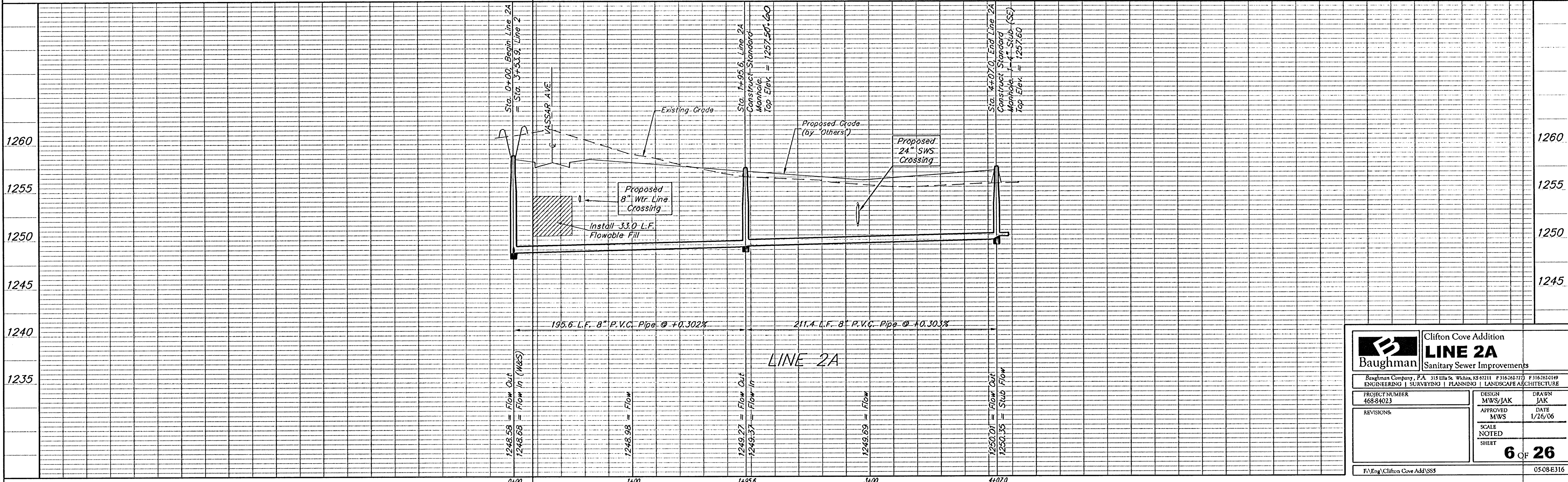
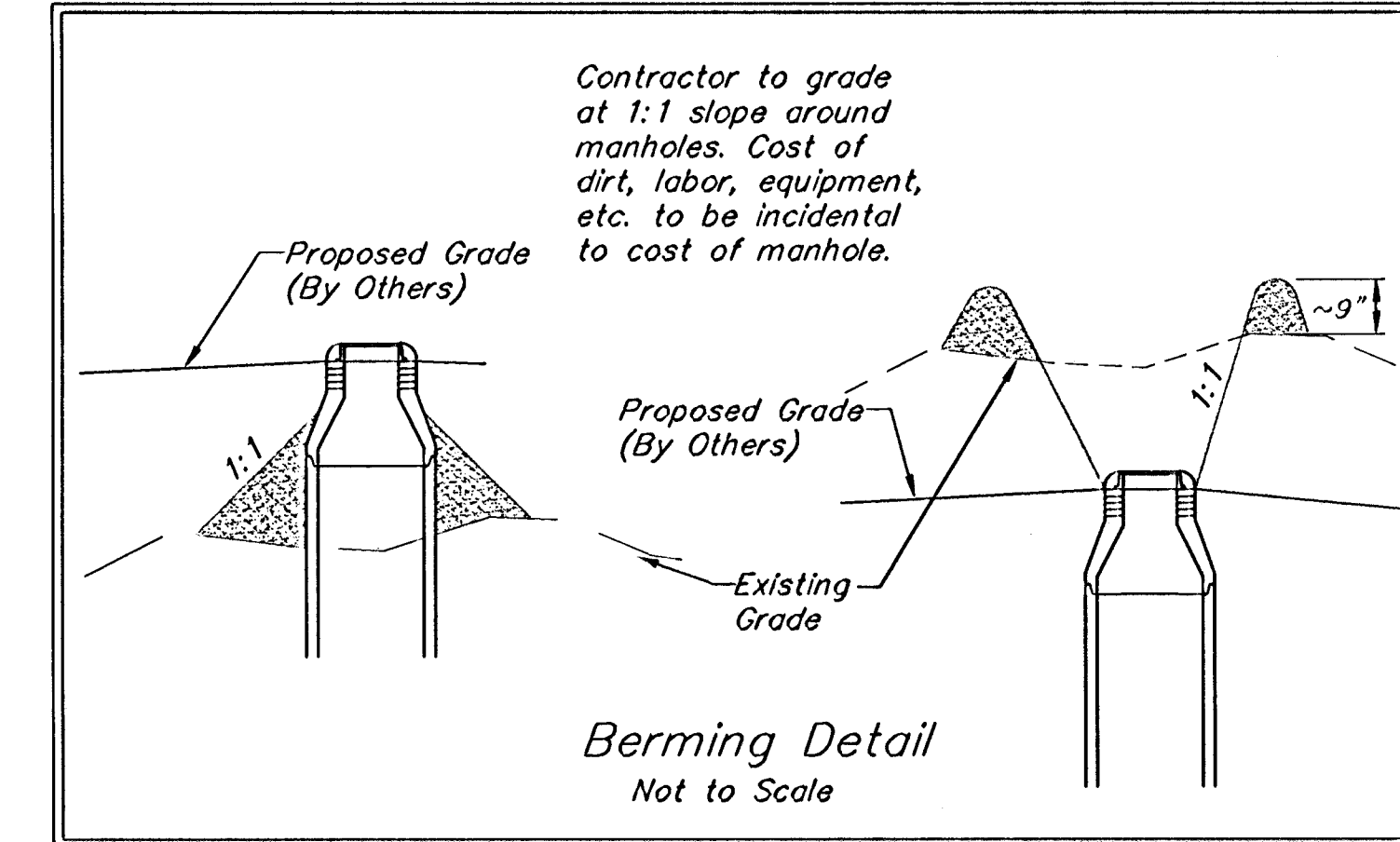


SCALE:
 1" = 40' HORIZONTAL
 1" = 5' VERTICAL
 • = IRON

SEWER SERVICE TABLE

NUMBER	TYPE	LOCATION			FOR INFORMATION ONLY	
		LOT NO.	BLOCK NO.	LINE NO.	STATION/DIRECTION	APPROXIMATE LENGTH 4" PIPE
18	8" X 4" Tee Saddle	15	B	2A	3+26/Lt.	VERTICAL: 2.5' HORIZONTAL: 13'

NOTE: Vertical Riser Pipe shall be extended to 2' minimum above ground water elevation and 4' maximum below proposed ground elevation.



	Clifton Cove Addition	
	LINE 2A	
Sanitary Sewer Improvements		
Baughman Company, P.A. 315 Ellis St. Wichita, KS 67211 P 316.263.7173 F 316.262.0149		
ENGINEERING SURVEYING PLANNING LANDSCAPE ARCHITECTURE		
PROJECT NUMBER 468-84023	DESIGN MWS/JAK	DRAWN JAK
APPROVED MWS	DATE 1/26/06	
REVISIONS	SCALE NOTED	SHEET
		6 OF 26
F:\Eng\Clifton Cove Add\SS5		0508-E316