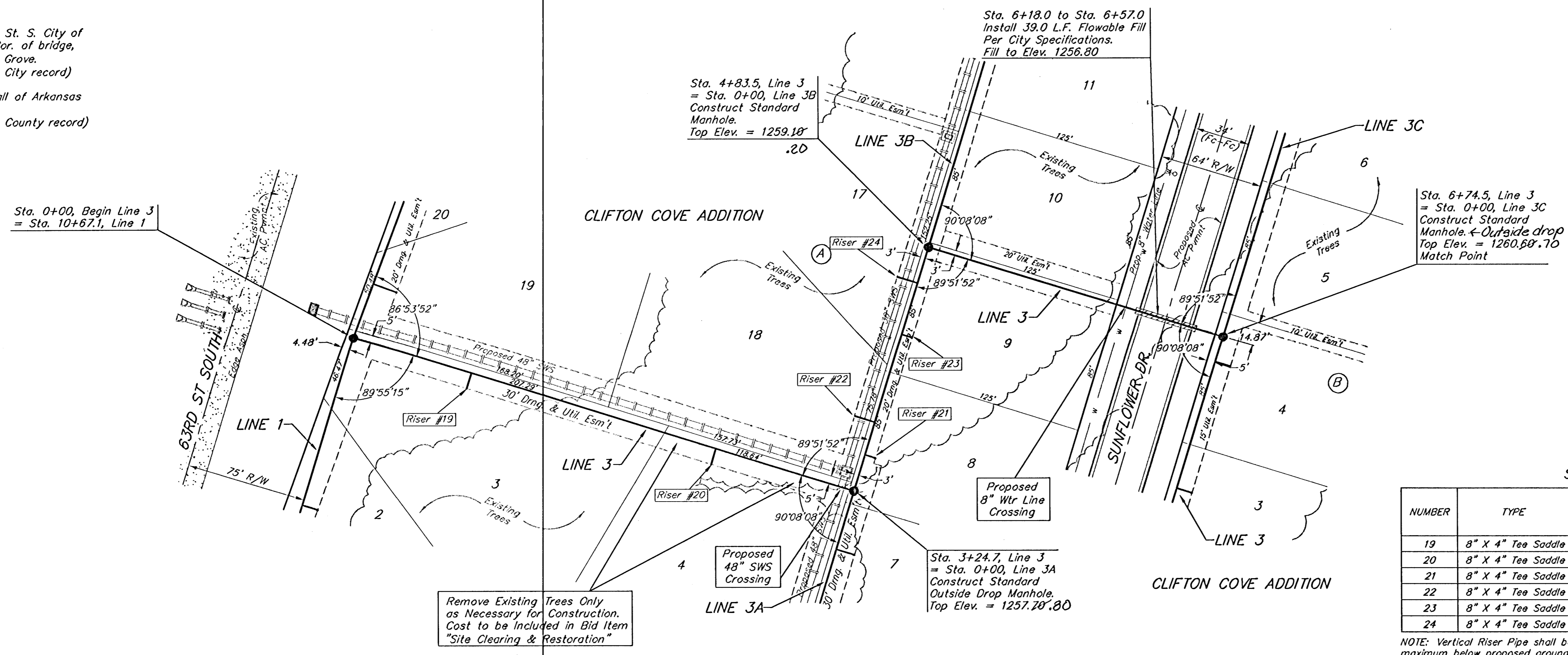


BENCHMARK:
 Arkansas River bridge & 63rd St. S. City of
 Wichita Benchmark Disc. SW Cor. of bridge,
 top of hubguard. 500± E. of Grove.
 Elev. = 1269.95 NGVD29 (per City record)

Brass plate on the NE wingwall of Arkansas
 River bridge & 63rd St. S.
 Elev. = 1267.48 NGVD29 (per County record)

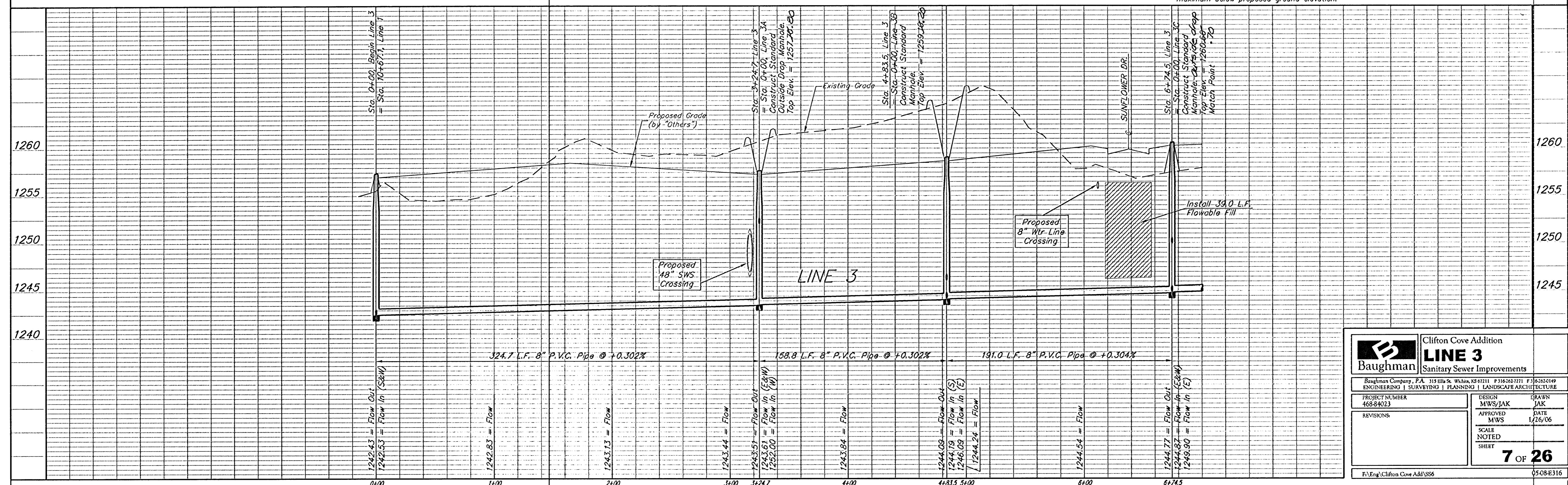
SCALE:
 1" = 40' HORIZONTAL
 1" = 5' VERTICAL
 • = IRON



SEWER SERVICE TABLE

NUMBER	TYPE	LOCATION			FOR INFORMATION ONLY		
		LOT NO.	BLOCK NO.	LINE NO.	STATION/DIRECTION	APPROXIMATE LENGTH 4" PIPE	
					VERTICAL	HORIZONTAL	
19	8" X 4" Tee Saddle	3	A	3	0+27/Rt.	80 13'	10'
20	8" X 4" Tee Saddle	4	A	3	2+38/Rt.	37 13'	10'
21	8" X 4" Tee Saddle	8	A	3	3+48/Rt.	50 11.5'	7'
22	8" X 4" Tee Saddle	18	A	3	3+59/Lt.	70 12'	13'
23	8" X 4" Tee Saddle	9	A	3	4+26/Rt.	12.5'	7'
24	8" X 4" Tee Saddle	17	A	3	4+60/Lt.	12.5'	13'

NOTE: Vertical Riser Pipe shall be extended to 2' minimum above ground water elevation and 4' maximum below proposed ground elevation.



Baughman Clifton Cove Addition
LINE 3
 Sanitary Sewer Improvements

Baughman Company, P.A. 315 E. 10th St., Wichita, KS 67211 P: 316-263-7111 F: 316-263-1419
 ENGINEERING | SURVEYING | PLANNING | LANDSCAPE ARCHITECTURE

PROJECT NUMBER: 468-84023
 DESIGN: MWS/JAK
 DRAWN: JAK
 APPROVED: MWS
 DATE: 1/26/06

REVISIONS:

SCALE: NOTED
 SHEET: **7 OF 26**

F:\Eng\Clifton Cove Add\SS6 0508E316