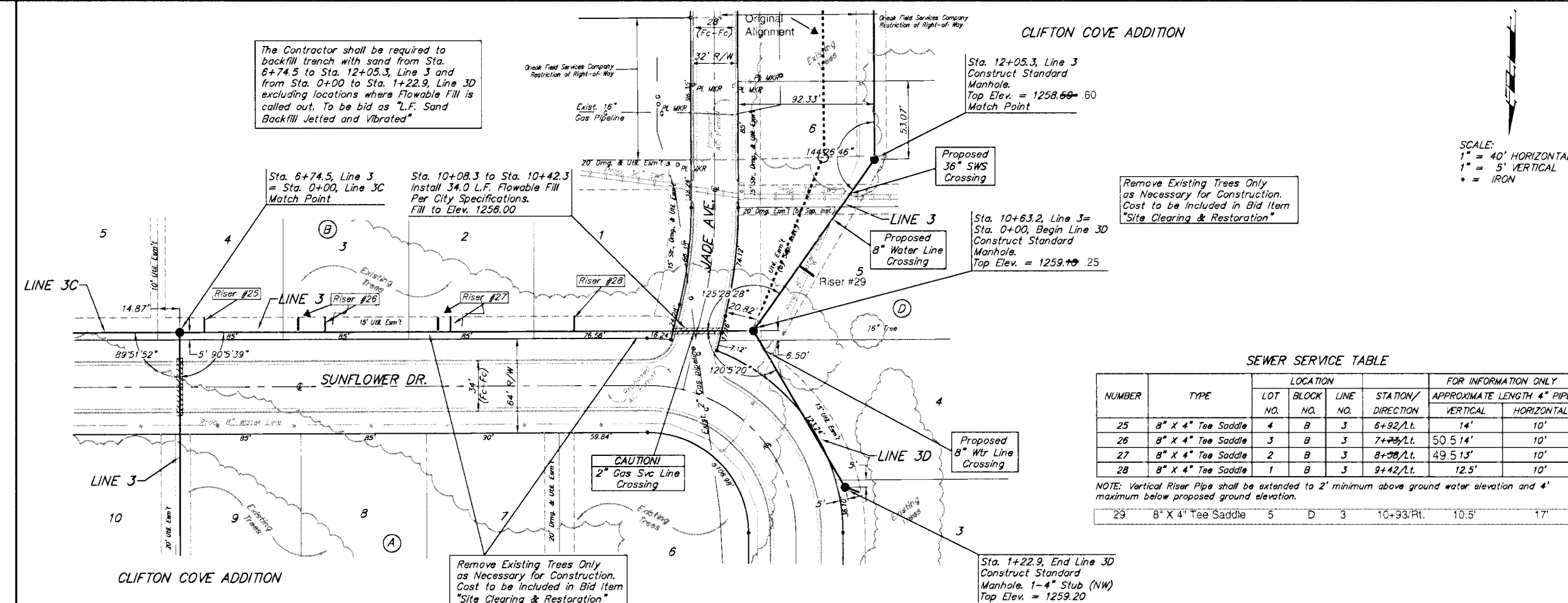


BENCHMARK:
 Arkansas River bridge & 63rd St. S. City of
 Wichita Benchmark Disc. SW Cor. of bridge,
 top of hubguard. 500'± E. of Grave
 Elev. = 1269.95 NGVD29 (per City record)
 Brass plate on the NE wingwall of Arkansas
 River bridge & 63rd St. S.
 Elev. = 1267.48 NGVD29 (per County record)



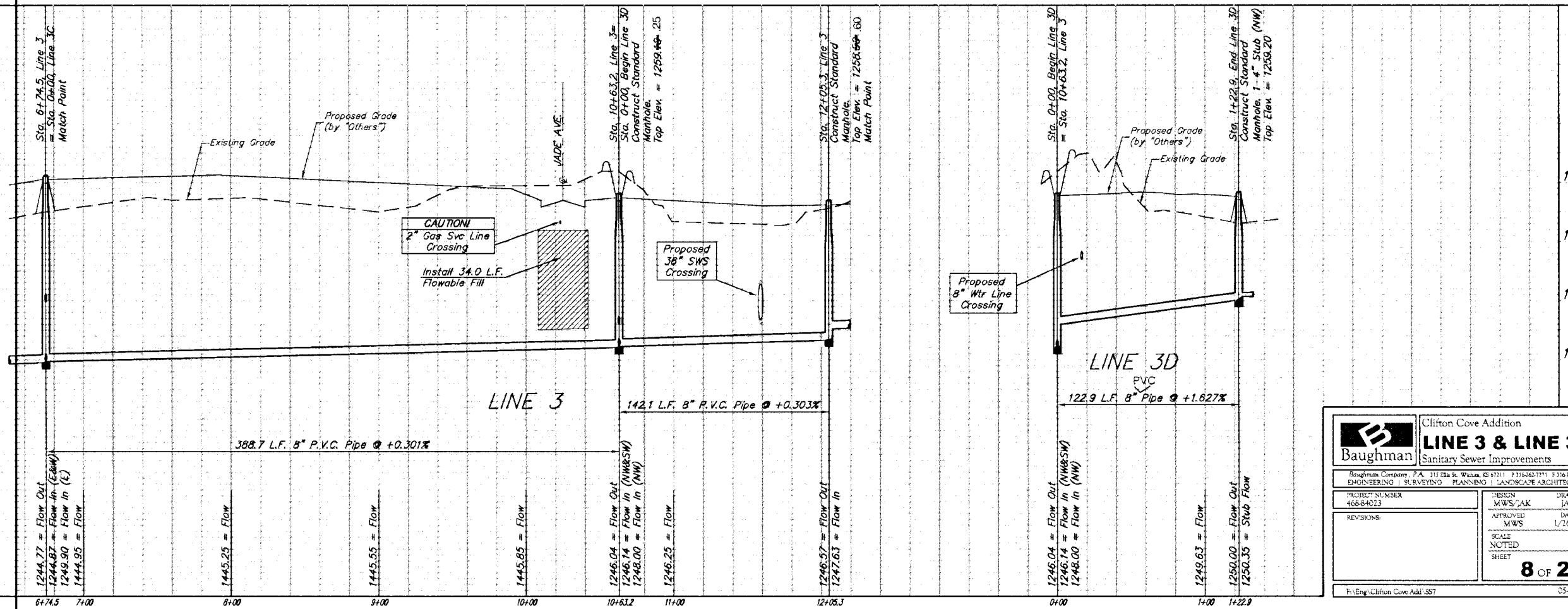
SCALE:
 1" = 40' HORIZONTAL
 1" = 5' VERTICAL
 • = IRON

SEWER SERVICE TABLE

NUMBER	TYPE	LOCATION			FOR INFORMATION ONLY	
		LOT NO.	BLOCK NO.	LINE NO.	STATION/DIRECTION	APPROXIMATE LENGTH 4" PIPE
25	8" X 4" Tee Saddle	4	B	3	6+92/Lt.	14' 10"
26	8" X 4" Tee Saddle	3	B	3	7+79/Lt.	50.5 14'
27	8" X 4" Tee Saddle	2	B	3	8+98/Lt.	49.5 13'
28	8" X 4" Tee Saddle	1	B	3	9+42/Lt.	12.5' 10"
29	8" X 4" Tee Saddle	5	D	3	10+93/Pt.	10.5' 17'

NOTE: Vertical Riser Pipe shall be extended to 2' minimum above ground water elevation and 4' maximum below proposed ground elevation.

The Contractor shall be required to contact Kevin Brown @ (316)722-2605 or Stan Bowen @ (316)722-2628 with Oneok Field Services 48 hours prior to construction along 16" Steel Gas Pipeline.



Baughman Clifton Cove Addition
LINE 3 & LINE 3D
 Sanitary Sewer Improvements

PROJECT NUMBER: 468-84023
 REVISIONS: NONE

DESIGNER: MWS/JAK
 APPROVED: MWS
 SCALE: NOTED
 SHEET: 8 OF 26

FILE: Eng\Clifton Cove Add. SST
 05-08-13