

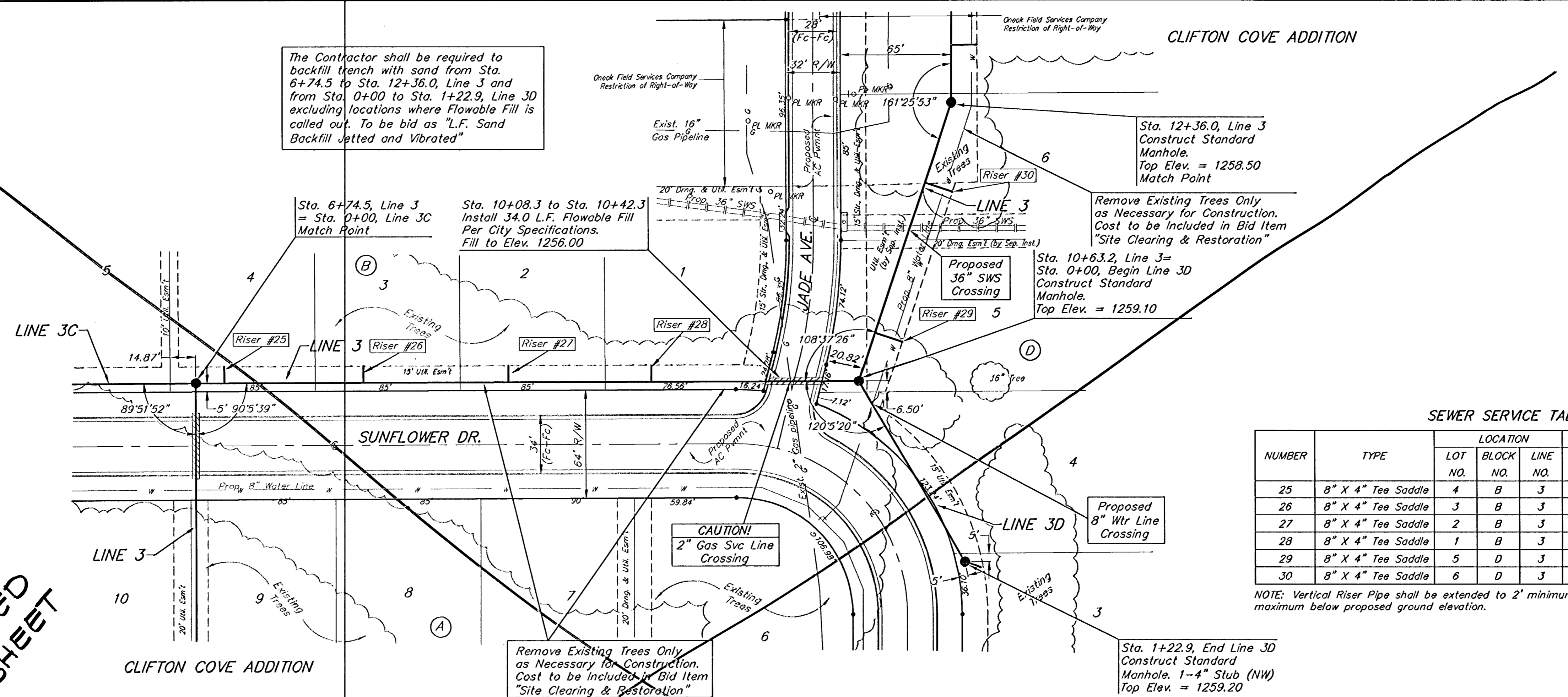
BENCHMARK:
 Arkansas River bridge & 63rd St. S. City of
 Wichita Benchmark Disc. SW Cor. of bridge,
 top of hubguard. 500'± E. of Grove.
 Elev. = 1269.95 NGVD29 (per City record)

Brass plate on the NE wingwall of Arkansas
 River bridge & 63rd St. S.
 Elev. = 1267.48 NGVD29 (per County record)

The Contractor shall be required to
 backfill trench with sand from Sta.
 6+74.5 to Sta. 12+36.0, Line 3 and
 from Sta. 0+00 to Sta. 1+22.9, Line 3D
 excluding locations where Flowable Fill
 is called out. To be bid as "L.F. Sand
 Backfill Jetted and Vibrated"

The Contractor shall be required to
 contact Kevin Brown @ (316)722-2605
 or Stan Bowen @ (316)722-2628 with
 Oneok Field Services 48 hours prior to
 Construction along 16" Steel Gas Pipeline.

**SEE
 REVISED
 SHEET**



SCALE:
 1" = 40' HORIZONTAL
 1" = 5' VERTICAL
 • = IRON

SEWER SERVICE TABLE

NUMBER	TYPE	LOCATION			FOR INFORMATION ONLY		
		LOT NO.	BLOCK NO.	LINE NO.	STATION/DIRECTION	APPROXIMATE LENGTH 4" PIPE	
					VERTICAL	HORIZONTAL	
25	8" X 4" Tee Saddle	4	B	3	6+92/Lt.	14'	10'
26	8" X 4" Tee Saddle	3	B	3	7+73/Lt.	14'	10'
27	8" X 4" Tee Saddle	2	B	3	8+58/Lt.	13'	10'
28	8" X 4" Tee Saddle	1	B	3	9+42/Lt.	12.5'	10'
29	8" X 4" Tee Saddle	5	D	3	10+94/Rt.	10.5'	17'
30	8" X 4" Tee Saddle	6	D	3	11+87/Rt.	10'	10'

NOTE: Vertical Riser Pipe shall be extended to 2' minimum above ground water elevation and 4' maximum below proposed ground elevation.

