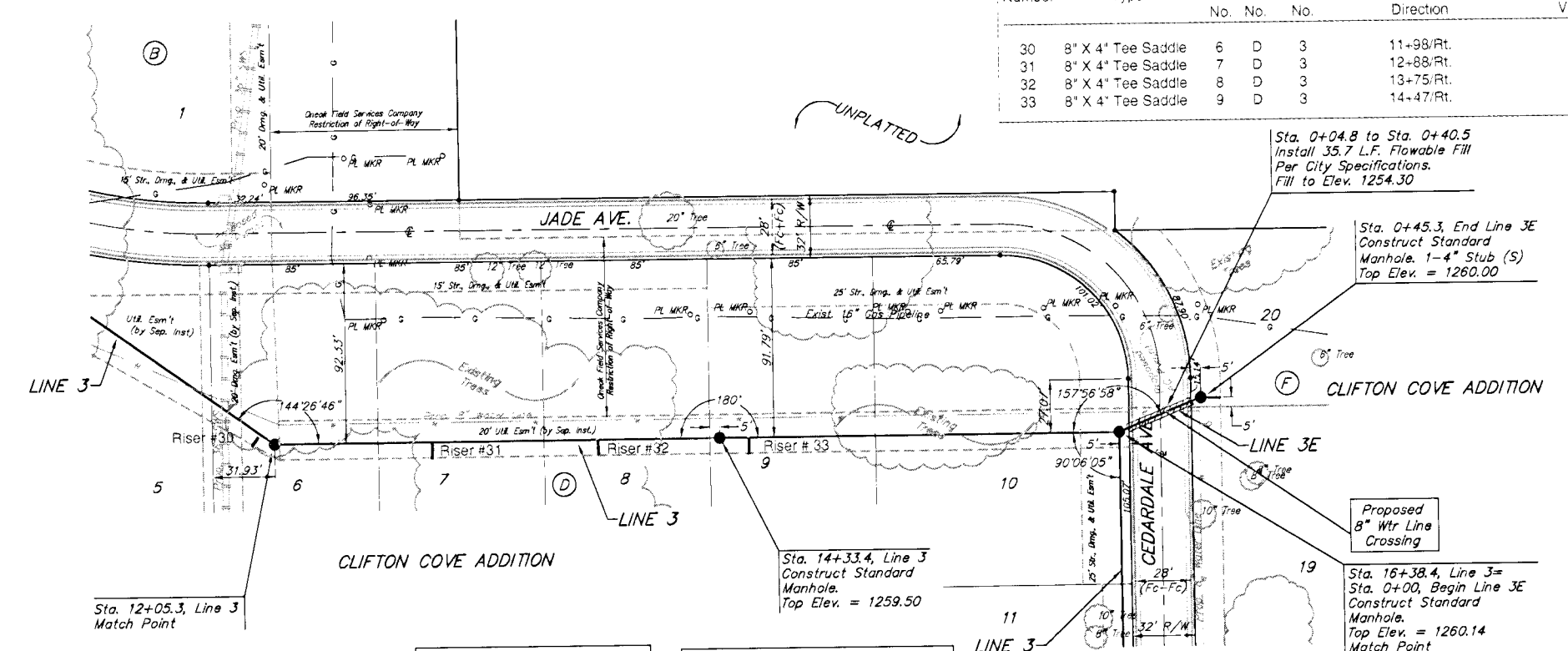
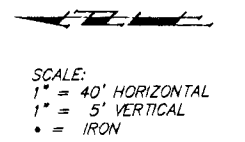


BENCHMARK:  
 Arkansas River bridge & 63rd St. S. City of  
 Wichita Benchmark Disc. SW Cor. of bridge,  
 top of hubguard, 500± E. of Grove.  
 Elev. = 1269.95 NGVD29 (per City record)  
 Brass plate on the NE wingwall of Arkansas  
 River bridge & 63rd St. S.  
 Elev. = 1267.48 NGVD29 (per County record)

SEWER SERVICE TABLE

Number	Type	Location Lot No. Block No.	Station/ Direction	For Information Only Approximate Length 4" Pipe	
				Vertical	Horizontal
30	8" X 4' Tee Saddle	6 D 3	11+98/Rt.	10'	15'
31	8" X 4' Tee Saddle	7 D 3	12+88/Rt.	10'	15'
32	8" X 4' Tee Saddle	8 D 3	13+75/Rt.	10.5'	15'
33	8" X 4' Tee Saddle	9 D 3	14+47/Rt.	11'	15'



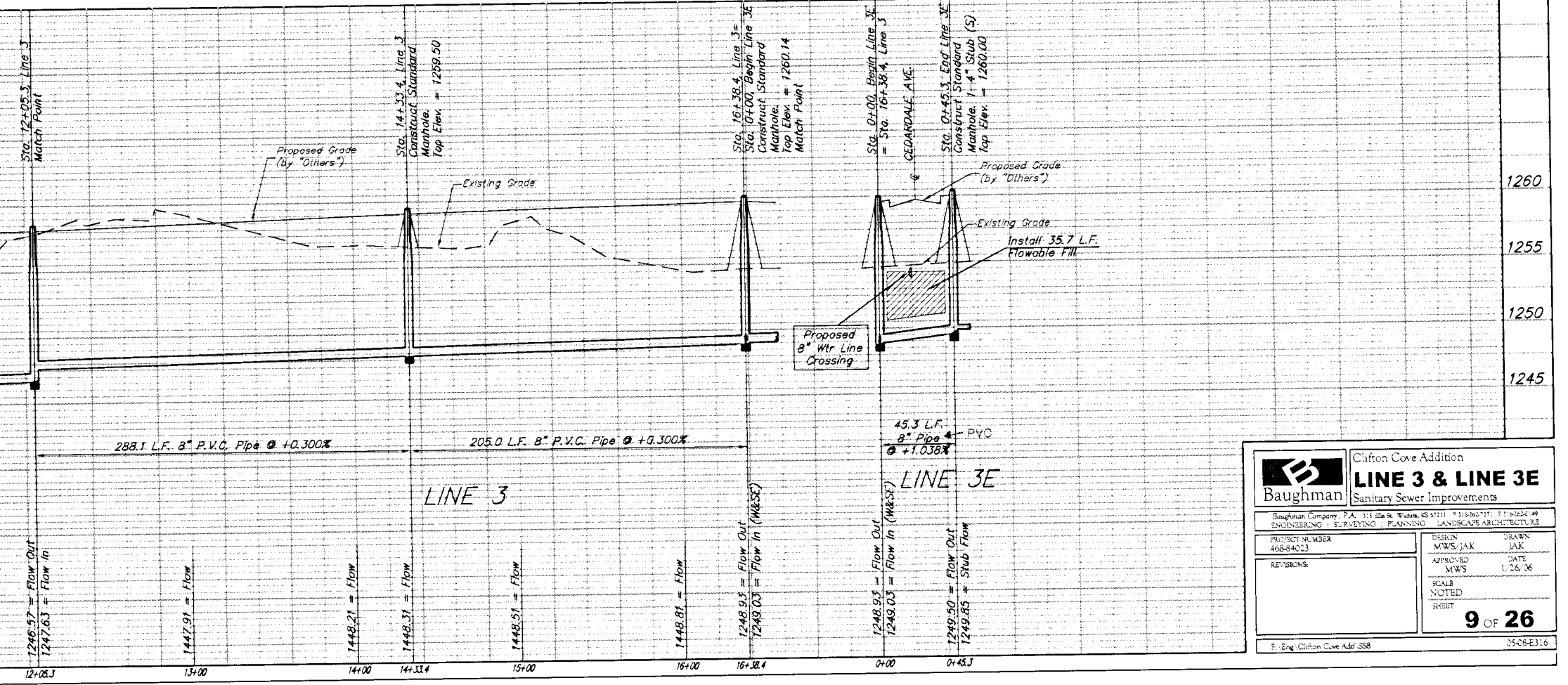
Sta. 0+04.8 to Sta. 0+40.5  
 Install 35.7 L.F. Flowable Fill  
 Per City Specifications.  
 Fill to Elev. 1254.30

Sta. 0+45.3, End Line 3E  
 Construct Standard  
 Manhole, 1-4" Stub (S)  
 Top Elev. = 1260.00

The Contractor shall be required to  
 contact Kevin Brown @ (316)722-2605  
 or Stan Bowen @ (316)722-2628 with  
 Oak Field Services 48 hours prior to  
 construction along 15" Steel Gas Pipelines.

Remove Existing Trees Only  
 as Necessary for Construction.  
 Cost to be Included in Bid Item  
 "Site Clearing & Restoration"

The Contractor shall be required to  
 backfill trench with sand from Sta.  
 12+05.3 to Sta. 16+38.4, Line 3. To  
 be bid as "L.F. Sand Backfill Jetted  
 and Vibrated"



Baughman  
 Clifton Cove Addition  
**LINE 3 & LINE 3E**  
 Sanitary Sewer Improvements

PROJECT NUMBER: 4684433  
 REVISIONS: [blank]

DESIGNER: MWS/JAK  
 APPROVED: MWS  
 SCALE: NOTED  
 SHEET: 9 OF 26

1245 Clifton Cove Add. 388 35456118