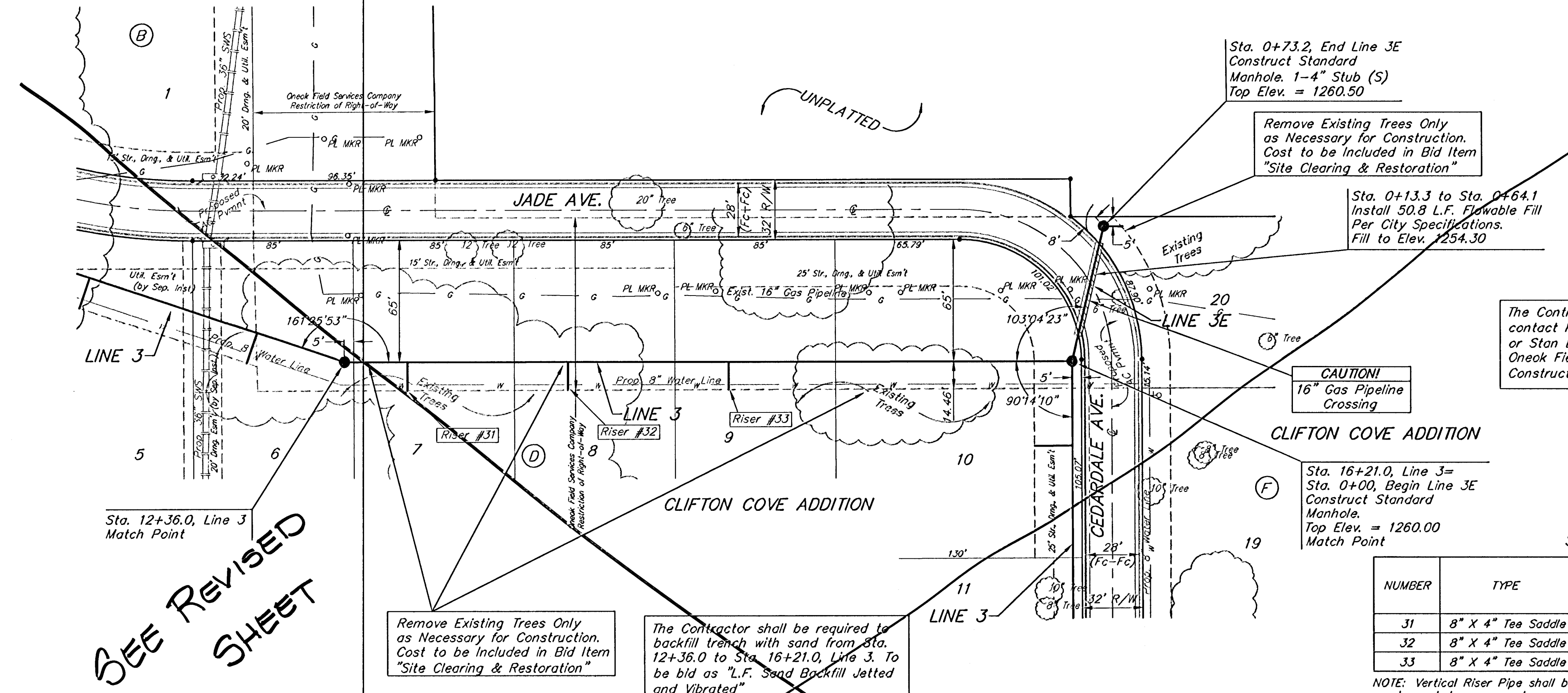


BENCHMARK:
 Arkansas River bridge & 63rd St. S. City of
 Wichita Benchmark Disc. SW Cor. of bridge,
 top of hubguard, 500'± E. of Grove.
 Elev. = 1269.95 NGVD29 (per City record)

Brass plate on the NE wingwall of Arkansas
 River bridge & 63rd St. S.
 Elev. = 1267.48 NGVD29 (per County record)

SCALE:
 1" = 40' HORIZONTAL
 1" = 5' VERTICAL
 • = IRON

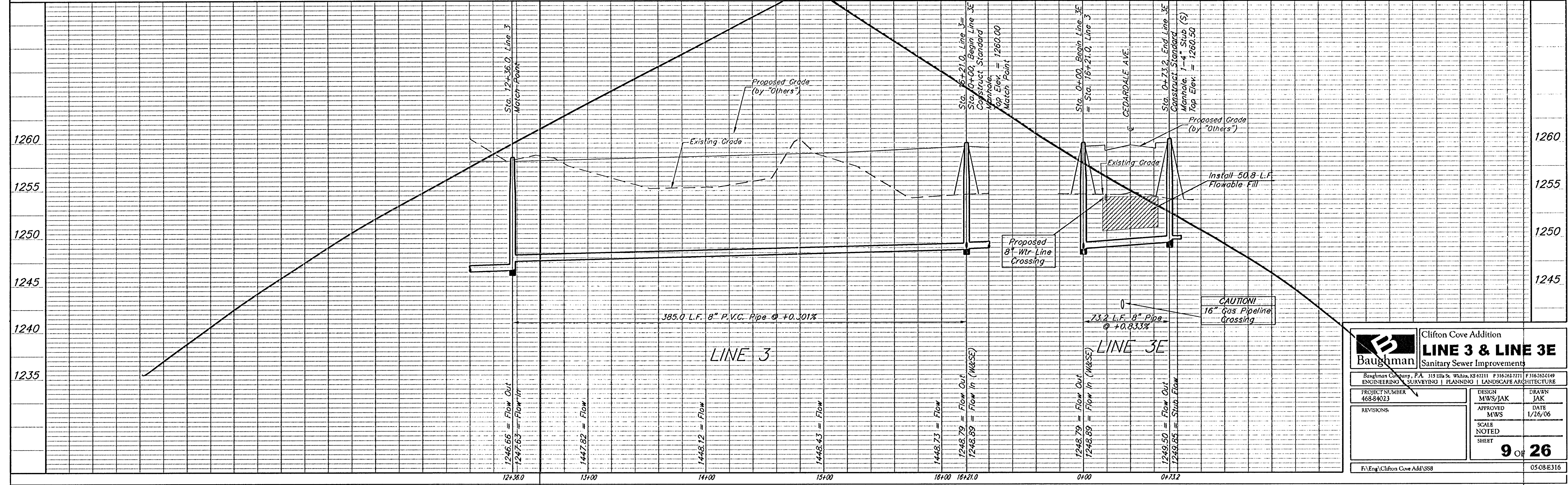


SEE REVISED SHEET

SEWER SERVICE TABLE

NUMBER	TYPE	LOCATION			FOR INFORMATION ONLY		
		LOT NO.	BLOCK NO.	LINE NO.	STATION/DIRECTION	APPROXIMATE LENGTH 4" PIPE	
31	8" X 4" Tee Saddle	7	D	J	12+69/Rt.	10'	16'
32	8" X 4" Tee Saddle	8	D	J	13+54/Rt.	10.5'	16'
33	8" X 4" Tee Saddle	9	D	J	14+39/Rt.	11'	16'

NOTE: Vertical Riser Pipe shall be extended to 2' minimum above ground water elevation and 4' maximum below proposed ground elevation.



Baughman Clifton Cove Addition
LINE 3 & LINE 3E
 Sanitary Sewer Improvements

Baylman Company, P.A. 315 Ellis St. Wichita, KS 67211 P 316-262-7771 F 316-262-0149
 ENGINEERING | SURVEYING | PLANNING | LANDSCAPE ARCHITECTURE

PROJECT NUMBER 468-84023	DESIGN MWS/JAK	DRAWN JAK
REVISIONS:	APPROVED MWS	DATE 1/26/06
SCALE NOTED SHEET		9 OF 26

F:\Eng\Clifton Cove Add\SS8 05-08-E316