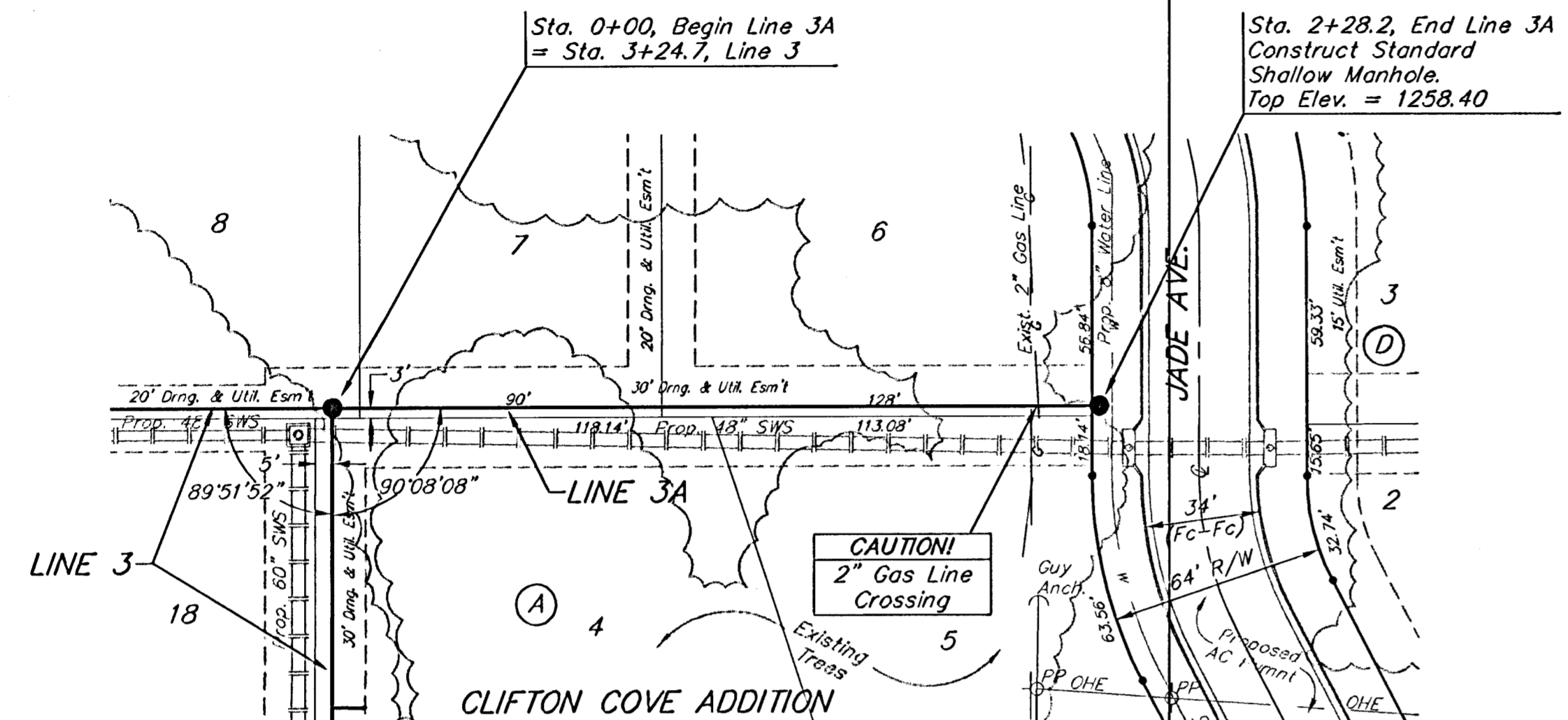


BENCHMARK:
 Arkansas River bridge & 63rd St. S. City of
 Wichita Benchmark Disc. SW Cor. of bridge,
 top of hubguard. 500'± E. of Grove.
 Elev. = 1269.95 NGVD29 (per City record)

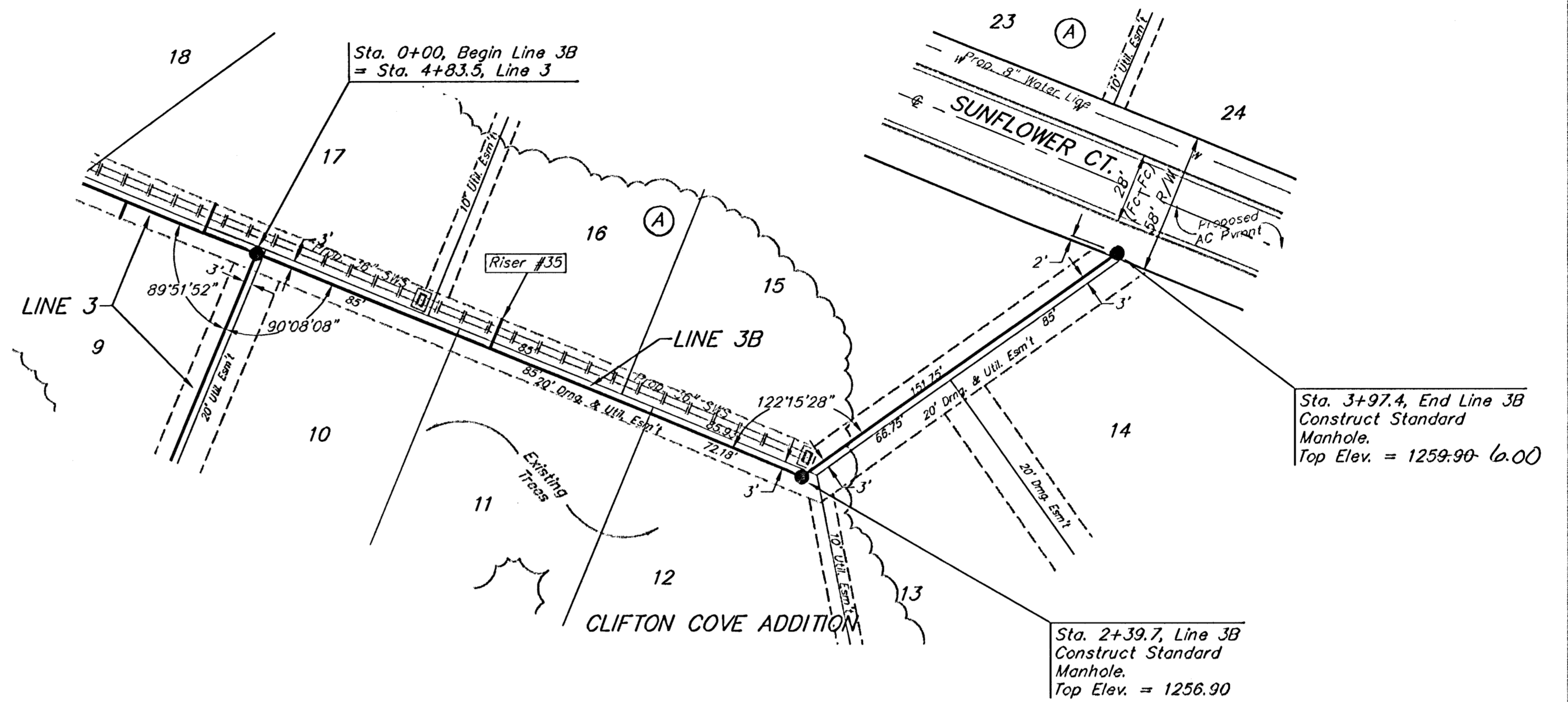
Brass plate on the NE wingwall of Arkansas
 River bridge & 63rd St. S.
 Elev. = 1267.48 NGVD29 (per County record)



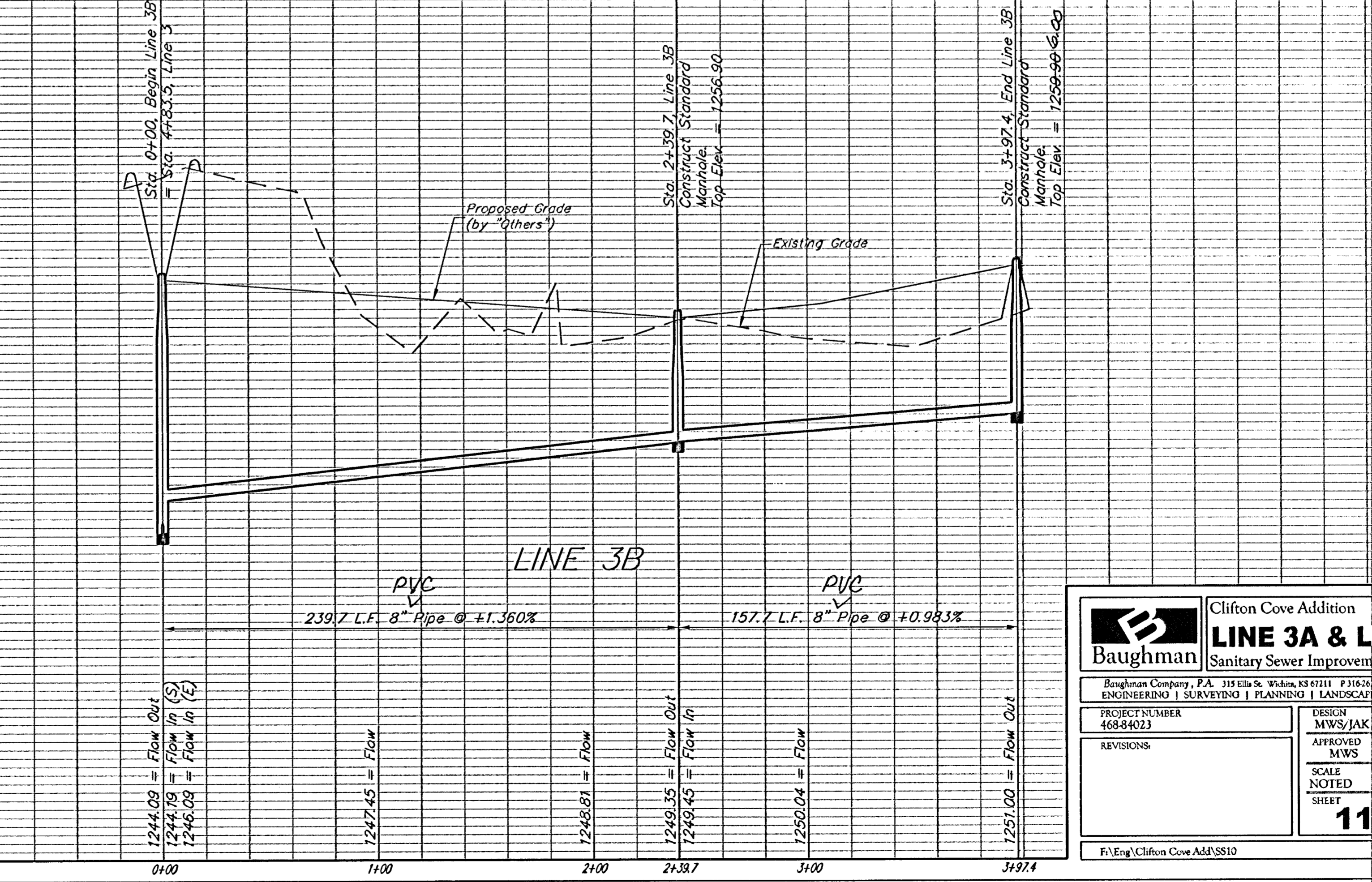
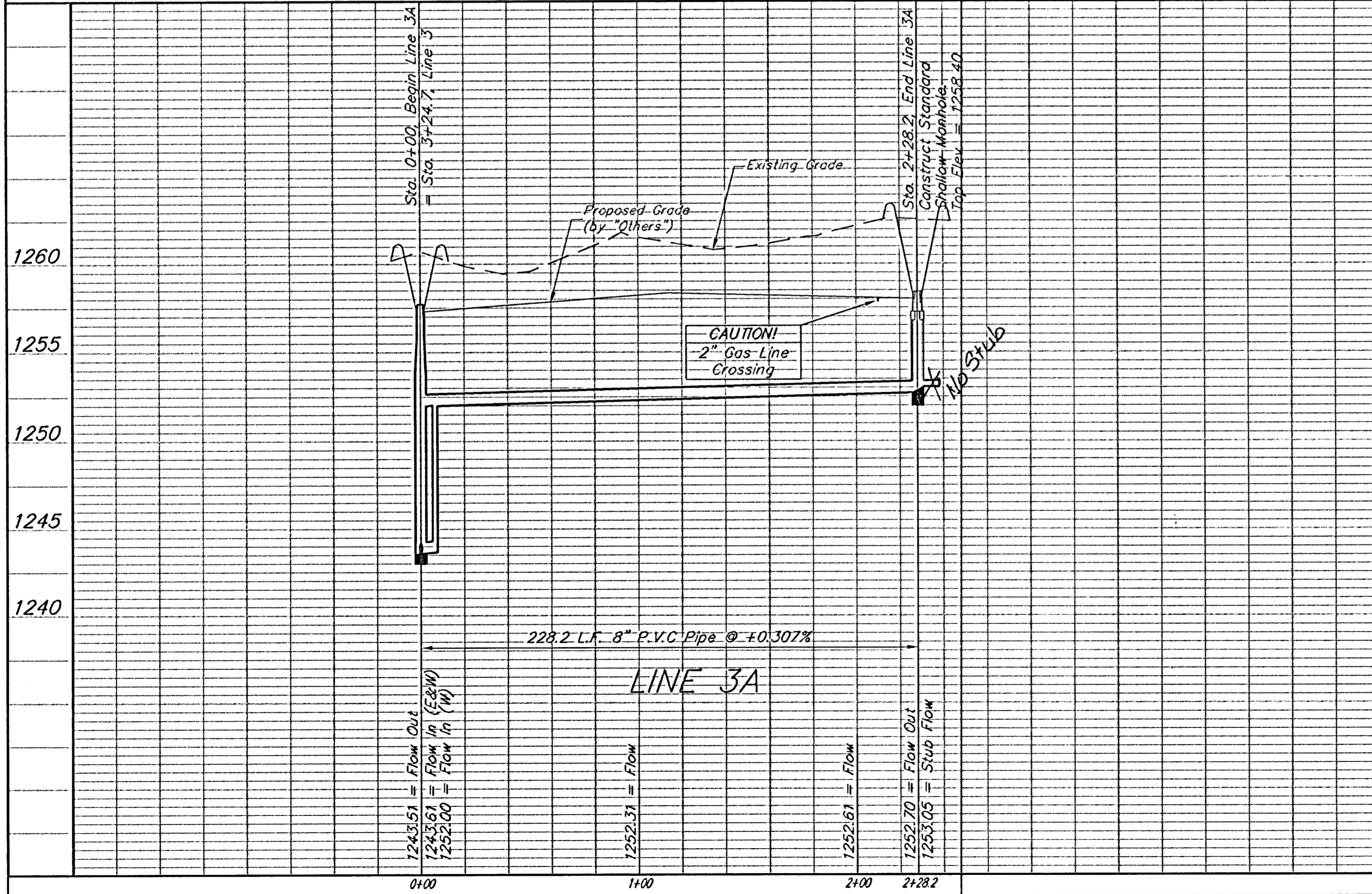
SEWER SERVICE TABLE

NUMBER	TYPE	LOCATION			FOR INFORMATION ONLY		
		LOT NO.	BLOCK NO.	LINE NO.	STATION/DIRECTION	APPROXIMATE LENGTH 4" PIPE	
					VERTICAL	HORIZONTAL	
35	8" X 4" Tee Saddle	16	A	3B	1+03/Lt.	05 4'	13'

NOTE: Vertical Riser Pipe shall be extended to 2' minimum above ground water elevation and 4' maximum below proposed ground elevation.



SCALE:
 1" = 40' HORIZONTAL
 1" = 5' VERTICAL
 • = IRON



Baughman Clifton Cove Addition
LINE 3A & LINE 3B
 Sanitary Sewer Improvements

Baughman Company, P.A. 315 Ellis St. Wichita, KS 67211 P 316-263-7771 F 316-263-0149
 ENGINEERING | SURVEYING | PLANNING | LANDSCAPE ARCHITECTURE

PROJECT NUMBER 468-84023	DESIGN MWS/JAK	DRAWN JAK
APPROVED MWS	DATE 1/26/06	
SCALE NOTED SHEET		11 OF 26

F:\Eng\Clifton Cove Add\SS10 05-08-E316