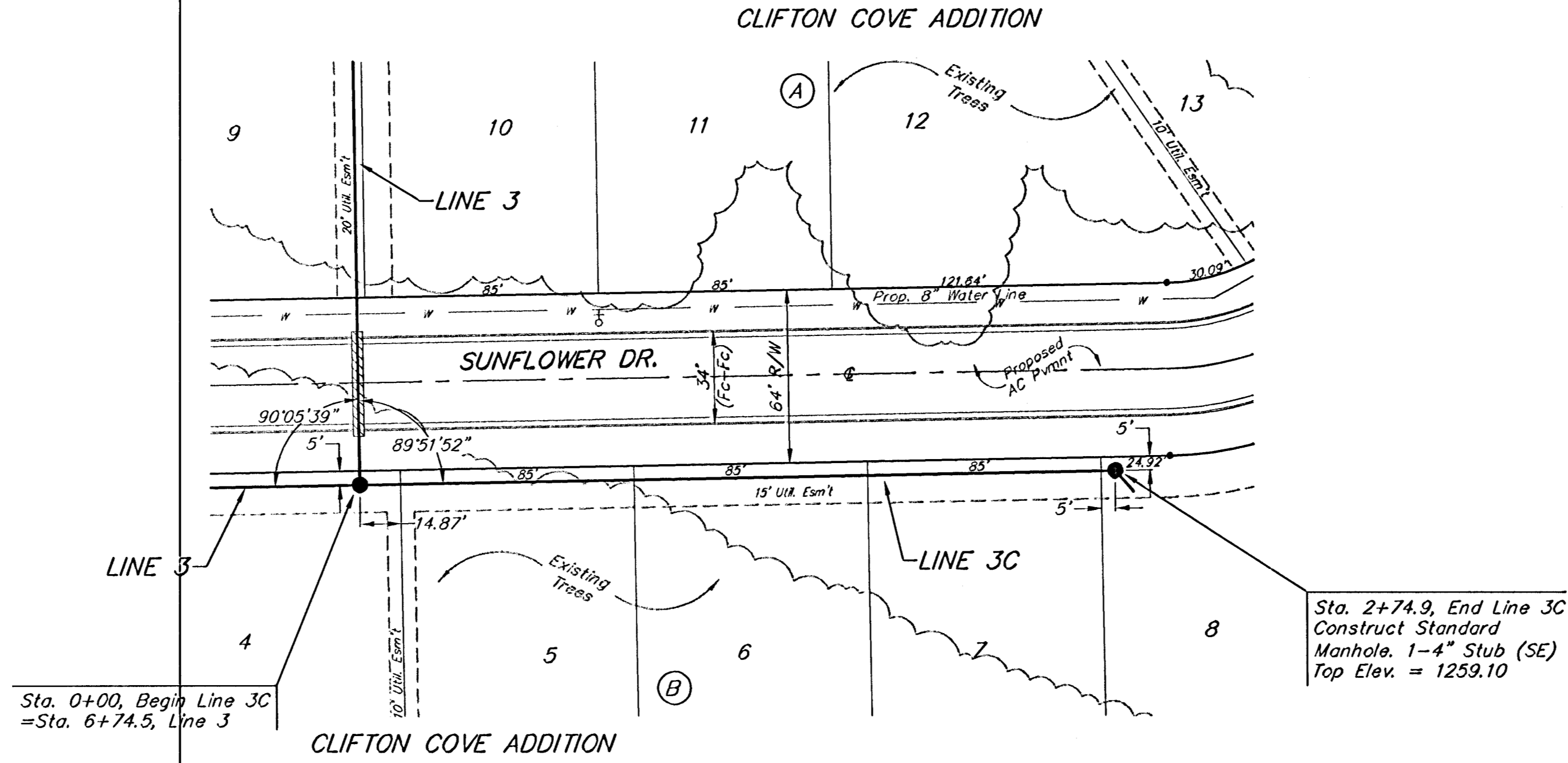


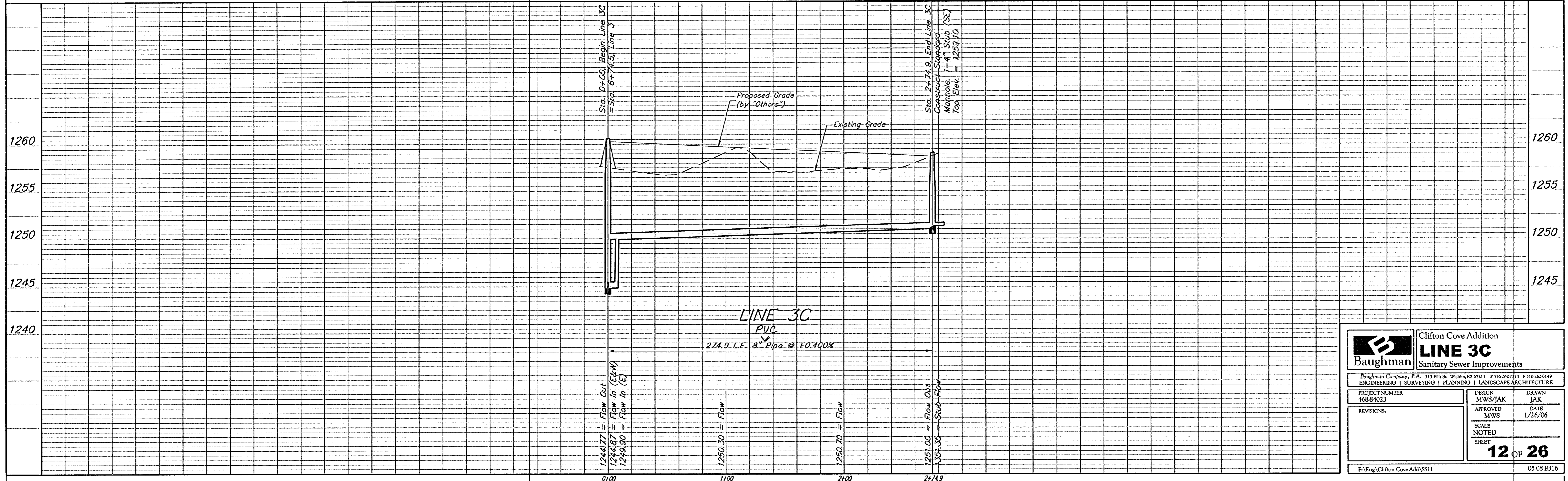
BENCHMARK:
 Arkansas River bridge & 63rd St. S. City of
 Wichita Benchmark Disc. SW Cor. of bridge,
 top of hubguard. 500'± E. of Grove.
 Elev. = 1269.95 NGVD29 (per City record)

Brass plate on the NE wingwall of Arkansas
 River bridge & 63rd St. S.
 Elev. = 1267.48 NGVD29 (per County record)

SCALE:
 1" = 40' HORIZONTAL
 1" = 5' VERTICAL
 • = IRON



The Contractor shall be required to backfill trench with sand from Sta. 0+00 to Sta. 2+74.9, Line 3C. To be bid as "L.F. Sand Backfill Jetted and Vibrated"



Baughman		Clifton Cove Addition	
LINE 3C		Sanitary Sewer Improvements	
Baughman Company, P.A. 315 Ella St. Wichita, KS 67211 P 316-262-7211 F 316-262-0149 ENGINEERING SURVEYING PLANNING LANDSCAPE ARCHITECTURE			
PROJECT NUMBER 46884023	DESIGN MWS/JAK	DRAWN JAK	
REVISIONS	APPROVED MWS	DATE 1/26/06	
SCALE NOTED		SHEET 12 OF 26	
P:\Eng\Clifton Cove Add\SS11		05-08-E316	