

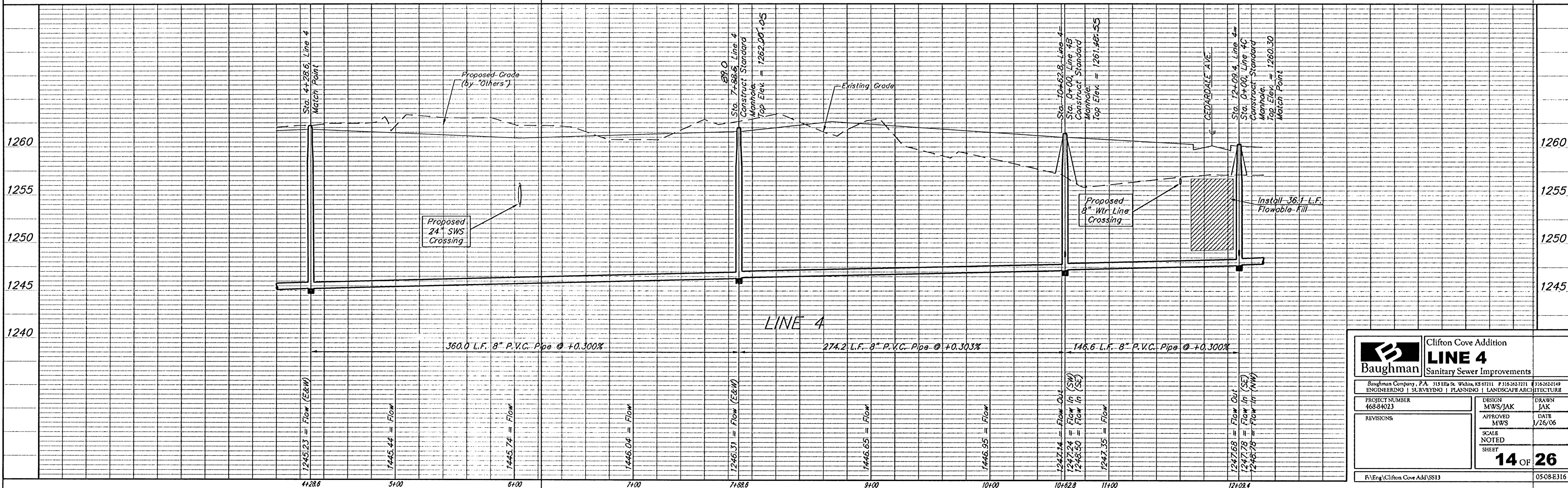
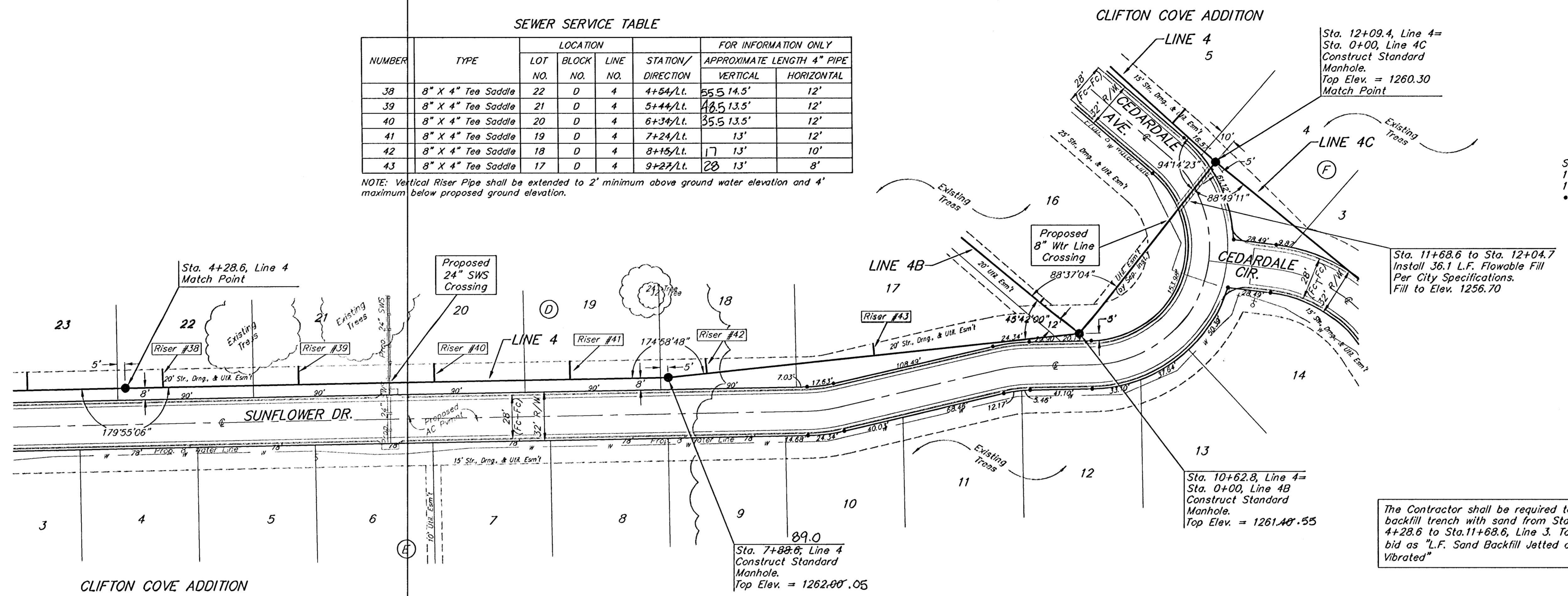
BENCHMARK:
Arkansas River bridge & 63rd St. S. City of
Wichita Benchmark Disc. SW Cor. of bridge,
top of hubguard. 500'± E. of Grove.
Elev. = 1269.95 NGVD29 (per City record)

Brass plate on the NE wingwall of Arkansas
River bridge & 63rd St. S.
Elev. = 1267.48 NGVD29 (per County record)

SEWER SERVICE TABLE

NUMBER	TYPE	LOCATION				FOR INFORMATION ONLY	
		LOT NO.	BLOCK NO.	LINE NO.	STATION/DIRECTION	APPROXIMATE LENGTH 4" PIPE VERTICAL	HORIZONTAL
38	8" X 4" Tee Saddle	22	D	4	4+84/Lt.	65.5	14.5'
39	8" X 4" Tee Saddle	21	D	4	5+44/Lt.	48.5	13.5'
40	8" X 4" Tee Saddle	20	D	4	6+34/Lt.	35.5	13.5'
41	8" X 4" Tee Saddle	19	D	4	7+24/Lt.	13'	12'
42	8" X 4" Tee Saddle	18	D	4	8+15/Lt.	17	13'
43	8" X 4" Tee Saddle	17	D	4	9+27/Lt.	20	13'

NOTE: Vertical Riser Pipe shall be extended to 2' minimum above ground water elevation and 4' maximum below proposed ground elevation.



Baughman Clifton Cove Addition
LINE 4
Sanitary Sewer Improvements

Baughman Company, P.A. 315 Elm St., Suite 301, Wichita, KS 67201 P: 316-262-7111 F: 316-262-0149
ENGINEERING | SURVEYING | PLANNING | LANDSCAPE ARCHITECTURE

PROJECT NUMBER: 468-84023
DESIGN: MWS/JAK
APPROVED: MWS
SCALE: NOTED
SHEET: 14 OF 26

REVISIONS:

DATE: 1/26/06

Drawn: JAK
Checked: MWS

FILE: F:\Eng\Clifton Cove Add\SS13
05-08-E316