

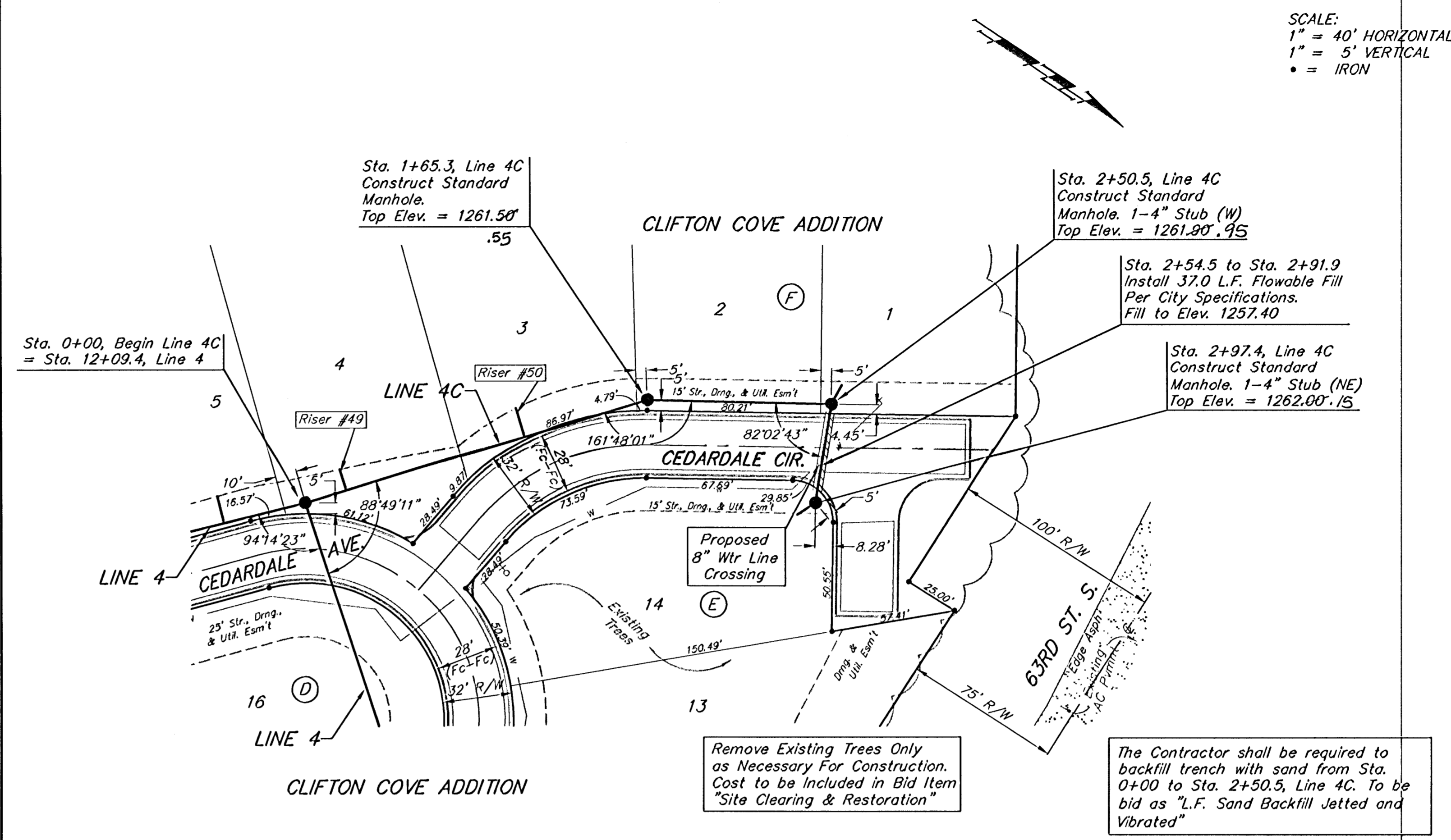
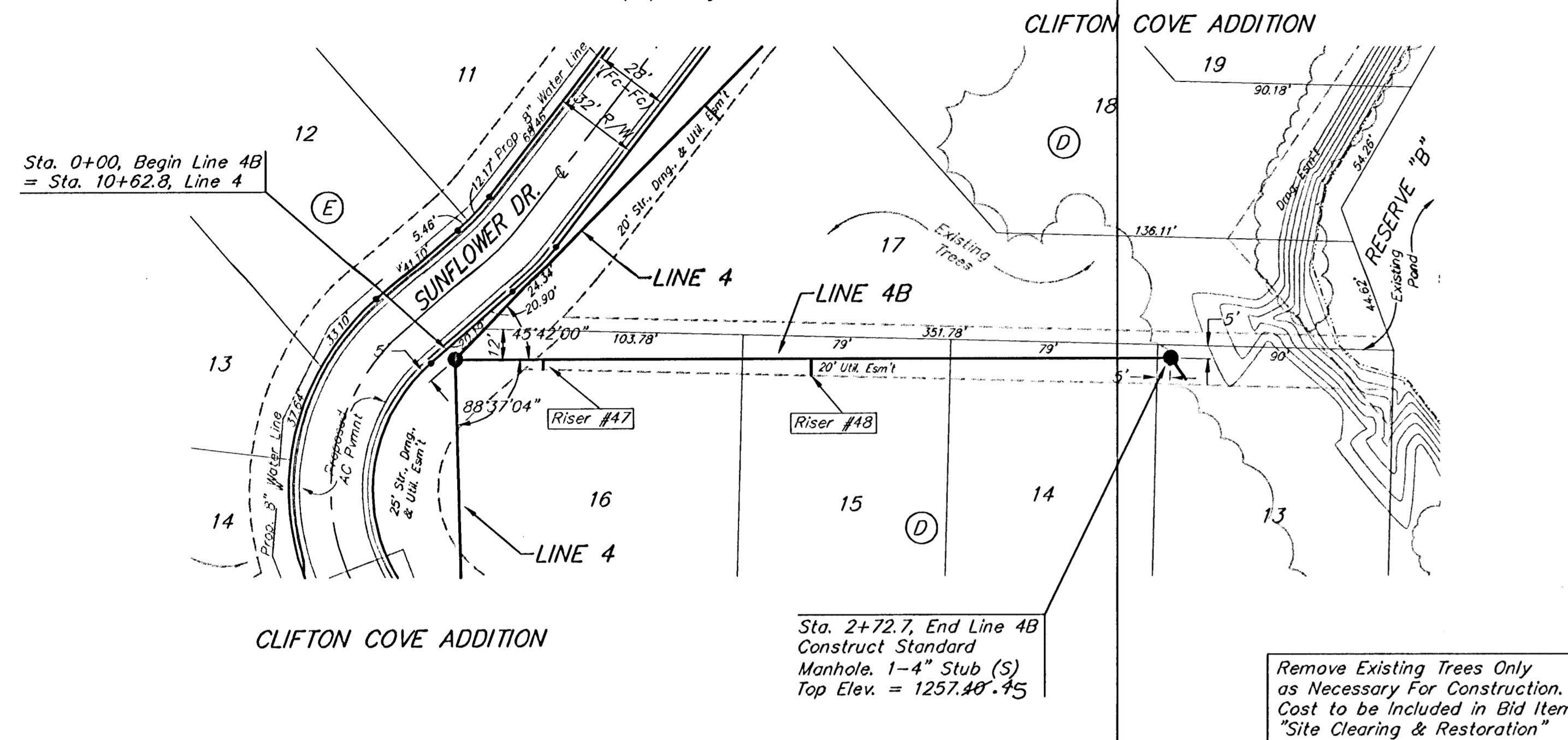
BENCHMARK:
Arkansas River bridge & 63rd St. S. City of
Wichita Benchmark Disc. SW Cor. of bridge,
top of hubguard. 500'± E. of Grove.
Elev. = 1269.95 NGVD29 (per City record)

Brass plate on the NE wingwall of Arkansas
River bridge & 63rd St. S.
Elev. = 1267.48 NGVD29 (per County record)

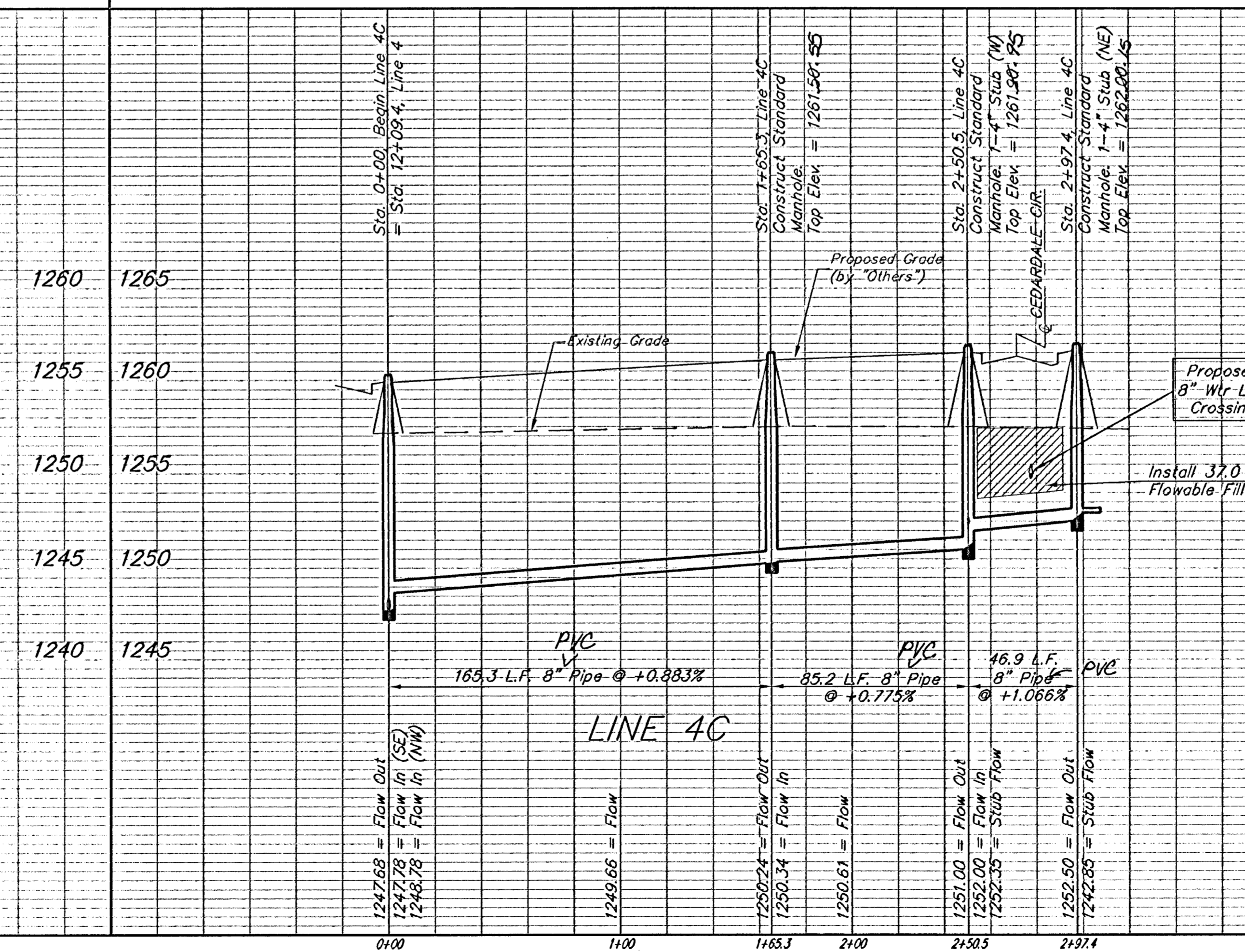
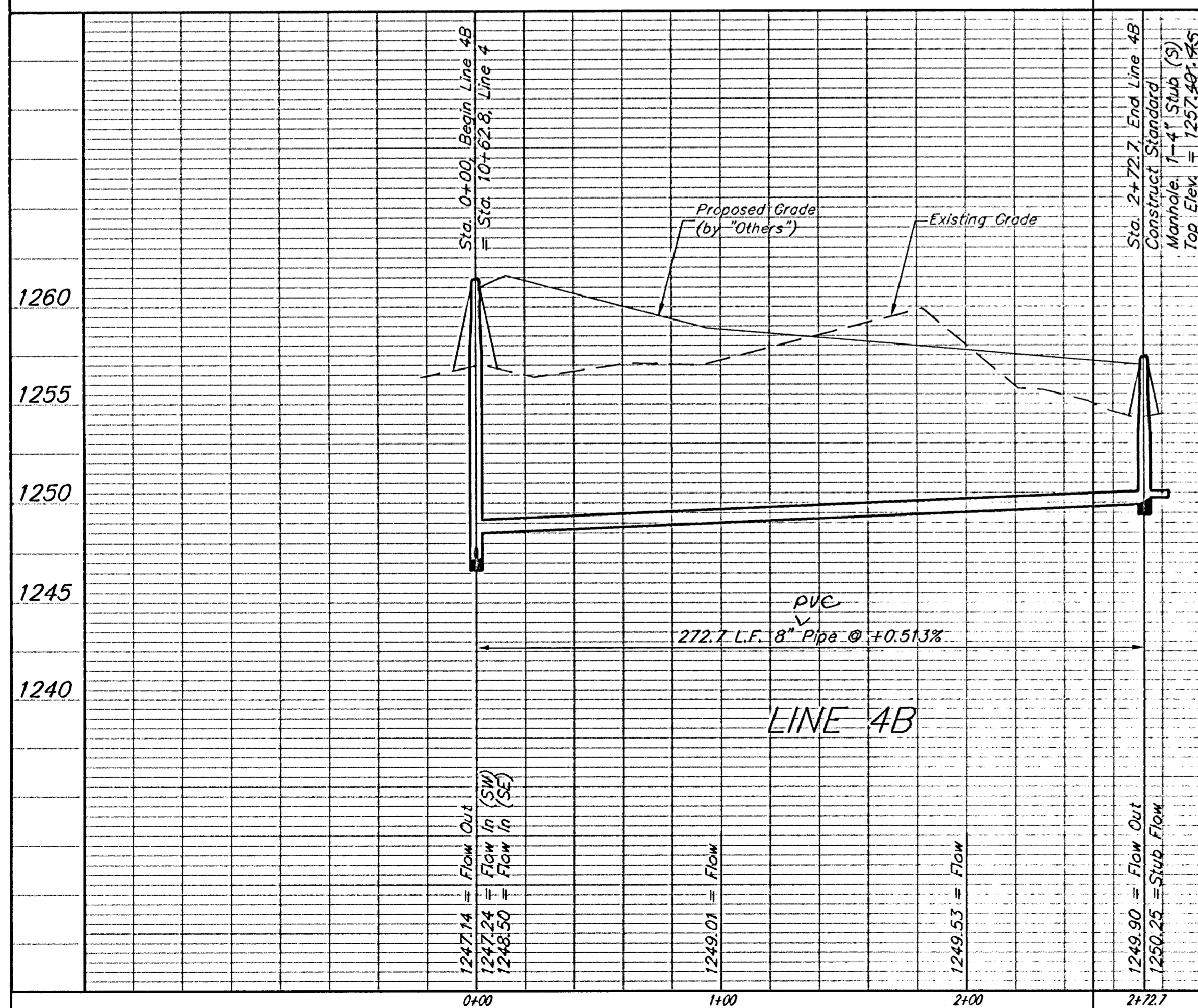
SEWER SERVICE TABLE

NUMBER	TYPE	LOCATION				FOR INFORMATION ONLY	
		LOT NO.	BLOCK NO.	LINE NO.	STATION/DIRECTION	APPROXIMATE LENGTH 4" PIPE	
47	8" X 4" Tee Saddle	16	D	4B	0+34/Rt.	35	10'
48	8" X 4" Tee Saddle	15	D	4B	1+36/Rt.		6.5'
49	8" X 4" Tee Saddle	4	F	4C	0+20/Lt.		7'
50	8" X 4" Tee Saddle	3	F	4C	1+06/Lt.		6'

NOTE: Vertical Riser Pipe shall be extended to 2' minimum above ground water elevation and 4' maximum below proposed ground elevation.



SCALE:
1" = 40' HORIZONTAL
1" = 5' VERTICAL
• = IRON



Baughman Clifton Cove Addition
LINE 4B & LINE 4C
Sanitary Sewer Improvements

Baughman Company, P.A. 315 E. St. Wichita, KS 67211 P:316.263.2711 F:316.262.0149
ENGINEERING | SURVEYING | PLANNING | LANDSCAPE ARCHITECTURE

PROJECT NUMBER: 468-84023
DESIGN: MWS/JAK
DRAWN: JAK
APPROVED: MWS
DATE: 1/26/06
SCALE: NOTED
SHEET: 16 OF 26

REVISIONS:

F:\Eng\Clifton Cove Add\SS15 0508E316