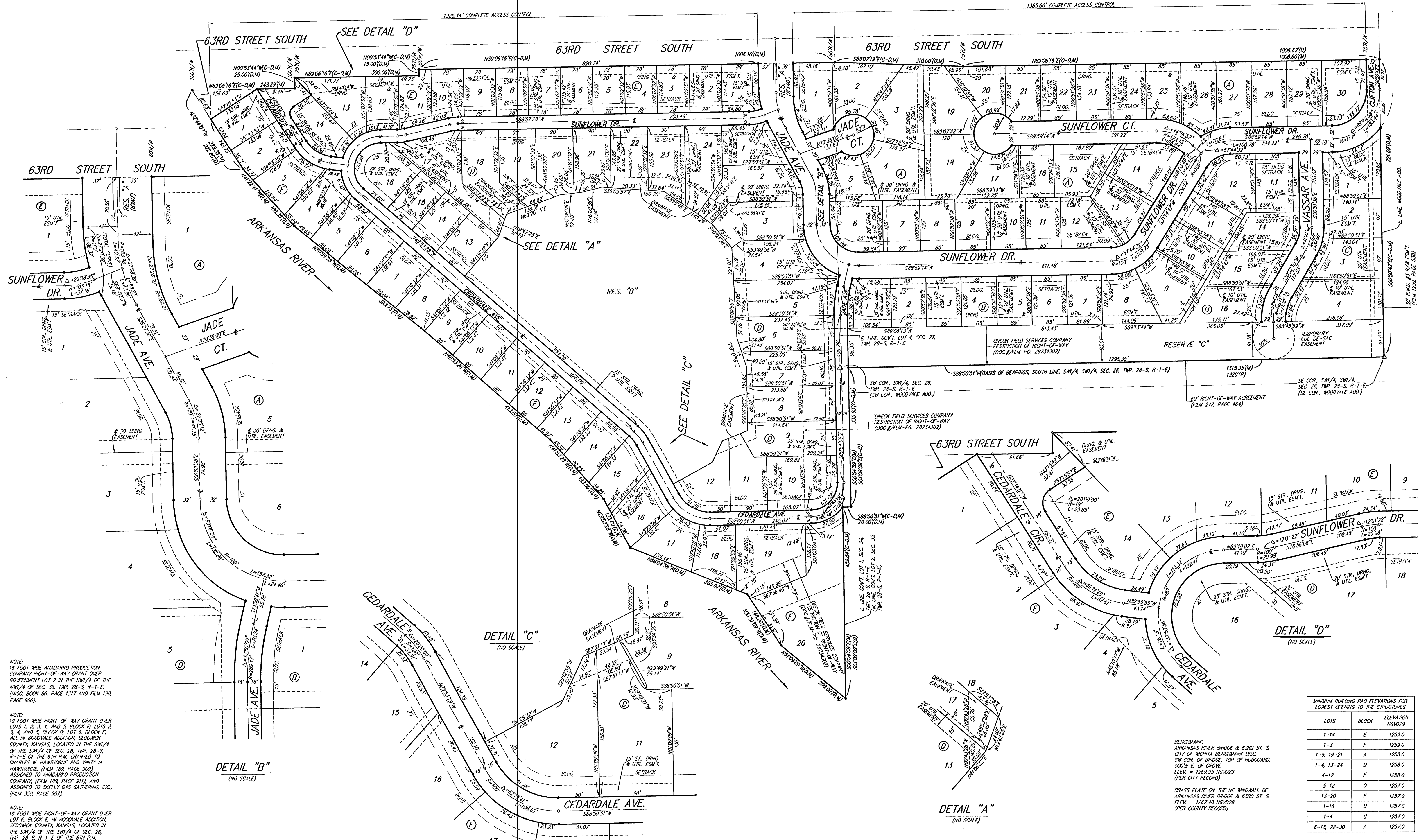


CLIFTON COVE ADDITION

SEDGWICK COUNTY, KANSAS



NOTE: 16 FOOT WIDE ANADARKO PRODUCTION COMPANY RIGHT-OF-WAY GRANT OVER GOVERNMENT LOT 2 IN THE NW/4 OF THE NW/4 OF SEC. 35, TWP. 28-S, R-1-E. (MSC. BOOK 86, PAGE 1317 AND FILM 190, PAGE 966).

NOTE: 10 FOOT WIDE RIGHT-OF-WAY GRANT OVER LOTS 1, 2, 3, 4, AND 5, BLOCK F, LOTS 2, 3, 4, AND 5, BLOCK B, LOT 6, BLOCK E, ALL IN WOODVALE ADDITION, SEDGWICK COUNTY, KANSAS, LOCATED IN THE SW/4 OF THE SW/4 OF SEC. 26, TWP. 28-S, R-1-E OF THE 6TH P.M. GRANTED TO CHARLES W. HAWTHORNE AND VINITA M. HAWTHORNE, (FILM 109, PAGE 909), ASSIGNED TO ANADARKO PRODUCTION COMPANY, (FILM 109, PAGE 911), AND ASSIGNED TO SKELLY GAS GATHERING, INC., (FILM 350, PAGE 907).

NOTE: 16 FOOT WIDE RIGHT-OF-WAY GRANT OVER LOT 6, BLOCK E, IN WOODVALE ADDITION, SEDGWICK COUNTY, KANSAS, LOCATED IN THE SW/4 OF THE SW/4 OF SEC. 26, TWP. 28-S, R-1-E OF THE 6TH P.M. GRANTED TO DONNIE E. COOK AND NORMA J. COOK, (MSC. BOOK 86, PAGE 1315, AND FILM 190, PAGE 965), ASSIGNED TO ANADARKO PRODUCTION COMPANY, (MSC. BOOK 85, PAGE 1178, AND FILM 190, PAGE 971), AND ASSIGNED TO SKELLY GAS GATHERING, INC., (FILM 350, PAGE 907).

NOTE: 16 FOOT WIDE GETTY GAS GATHERING RIGHT-OF-WAY GRANT OVER GOVERNMENT LOT 2 IN THE NW/4 OF THE NW/4 OF SEC. 35, TWP. 28-S, R-1-E. (FILM 1529, PAGE 1227, AND FILM 1453, PAGE 487).

DETAIL "B"
(NO SCALE)

DETAIL "C"
(NO SCALE)

DETAIL "A"
(NO SCALE)

DETAIL "D"
(NO SCALE)

LOTS	BLOCK	ELEVATION
1-14	E	1259.0
1-3	F	1259.0
1-5, 19-21	A	1258.0
1-4, 13-24	D	1258.0
4-12	F	1258.0
5-12	D	1257.0
13-20	F	1257.0
1-18	B	1257.0
1-4	C	1257.0
6-18, 22-30	A	1257.0

BENCHMARK: ARKANSAS RIVER BRIDGE & 63RD ST. S. CITY OF WICHITA BENCHMARK DISC. SW COR. OF BRIDGE, TOP OF HUB/GUARD. 500'S E. OF CORNER. ELEV. = 1269.95 NGVD29 (PER CITY RECORD)

BRASS PLATE ON THE NE WINGWALL OF ARKANSAS RIVER BRIDGE & 63RD ST. S. ELEV. = 1267.48 NGVD29 (PER COUNTY RECORD)

NOTE: A master grading plan for drainage has been developed for this subdivision and is on file with the City of Wichita, Kansas. All drainage easements, right-of-ways, or reserves shall remain at established grades or as modified with the approval of the City Engineer of the City of Wichita, Kansas. No obstructions which impede the flow of this drainage system shall be allowed.

Baughman Company, P.A.
315 E. 15th St., Wichita, KS 67211 P 316-262-2171 F 316-262-0149

Baughman ENGINEERING SURVEYING PLANNING LANDSCAPE ARCHITECTURE

F:\PLAT\CLIFTON COVE REVISED.DWG \CLIFTON COVE REVISED.DWG\MCC

58-02-01-03