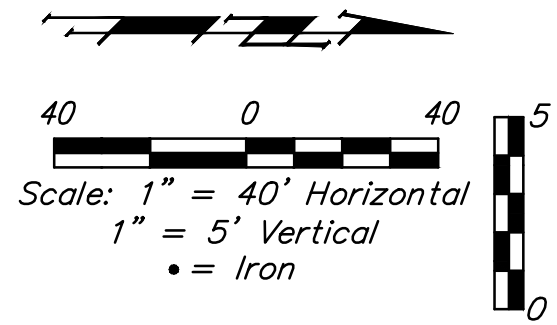
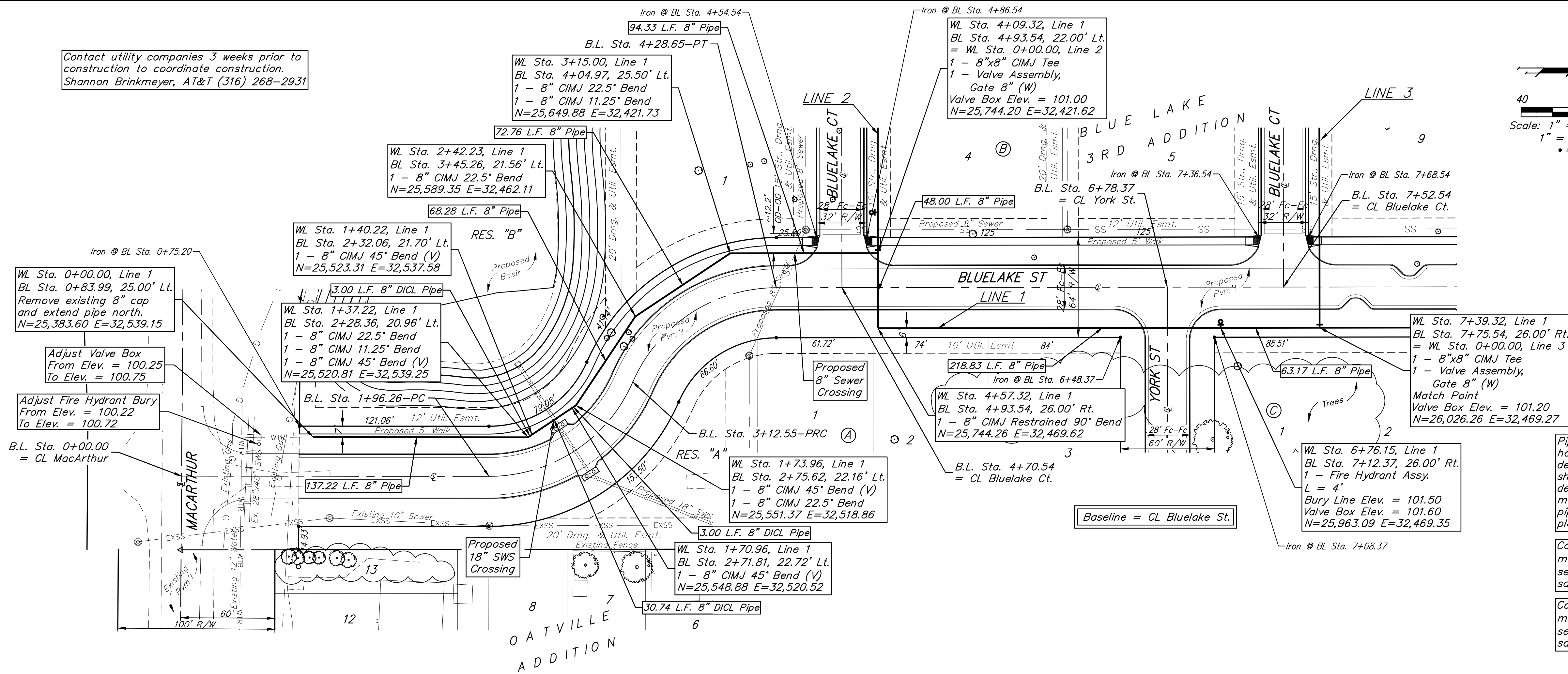


BENCHMARKS:
 BM #1 - "+" on north side of manhole rim ~42' east and 28' south of the intersection of MacArthur & Blue Lake St.
 Elev. = 99.97 City Datum

BM #2 - "□" with + cut on northwest face of drop inlet on north side of MacArthur Road, 79.4' North of centerline of MacArthur Road and 152.3' E/SE of southwest corner of Reserve "C", Blue Lake 3rd Addition.
 Elev. = 95.55 City Datum

Contact utility companies 3 weeks prior to construction to coordinate construction.
 Shannon Brinkmeyer, AT&T (316) 268-2931

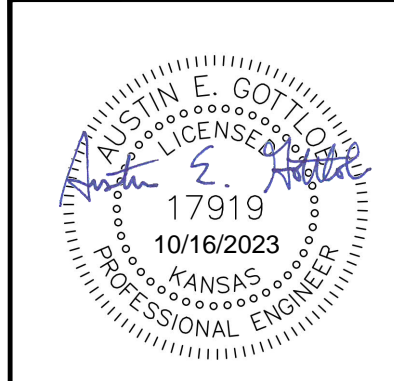
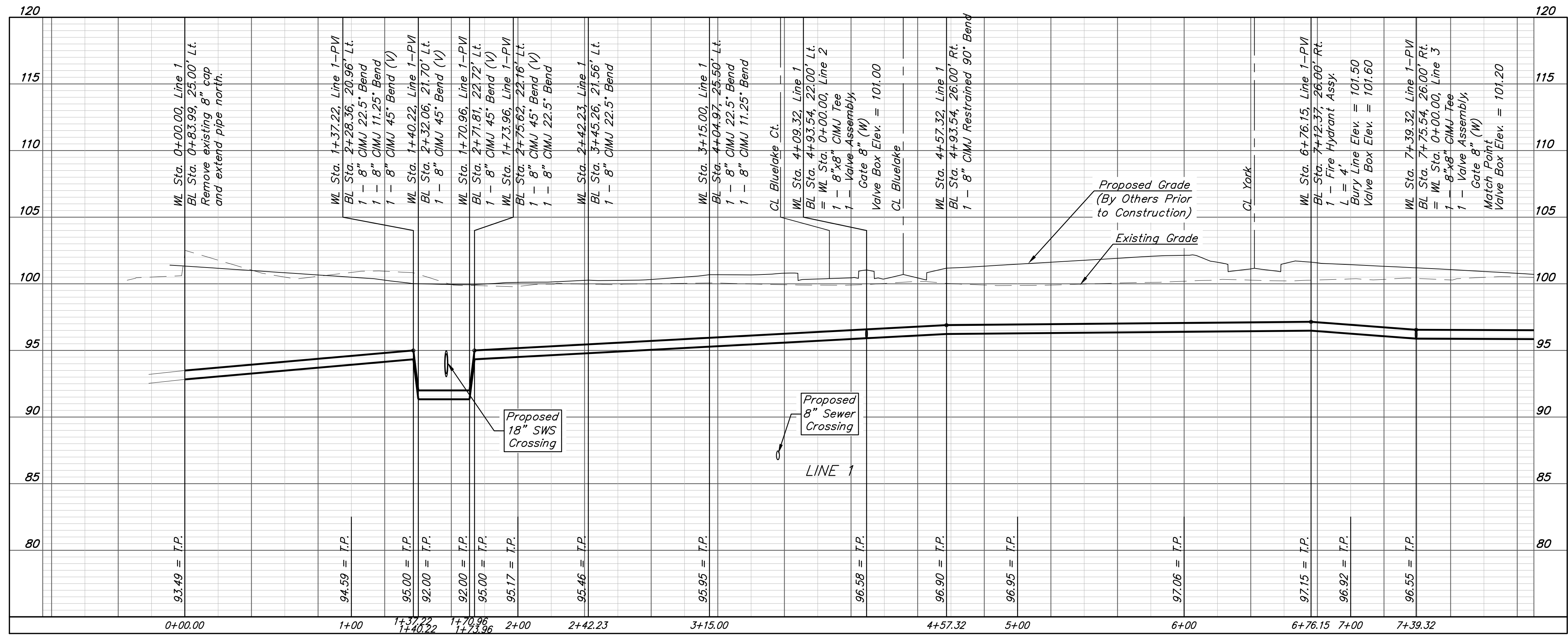


Pipe layout is shown with horizontal and vertical deflections. Contractor to use short pipe lengths, high deflection couplers, and manufacturer recommended pipe deflections to meet planned alignment.

Contractor to maintain a minimum of 10' of horizontal separation (O.D.-O.D.) between sanitary sewer and water line.

Contractor to maintain a minimum of 2' of vertical separation (O.D.-O.D.) between sanitary sewer and water line.

DEPTH UNKNOWN
 Contractor to Verify Depth & Location of Existing Water Line Prior to Construction.



BAUGHMAN COMPANY
 315 Ellis St.
 Wichita, KS 67211
 316-262-7271
 BaughmanCo.com

BLUE LAKE 3RD ADD.
 Phase 1
LINE 1
 WATER DISTRIBUTION SYSTEM
 PROJECT NUMBER:
 23-01-E415
 DESIGN: AEG DRAWN: TMS
 DATE: October 9, 2023
 SHEET **2** OF **18**

File: E:\Projects\Blue Lake 3rd Addition_22-02-P755\Engineering\Phase 1\WTR 23-01-E415\Water.dwg