

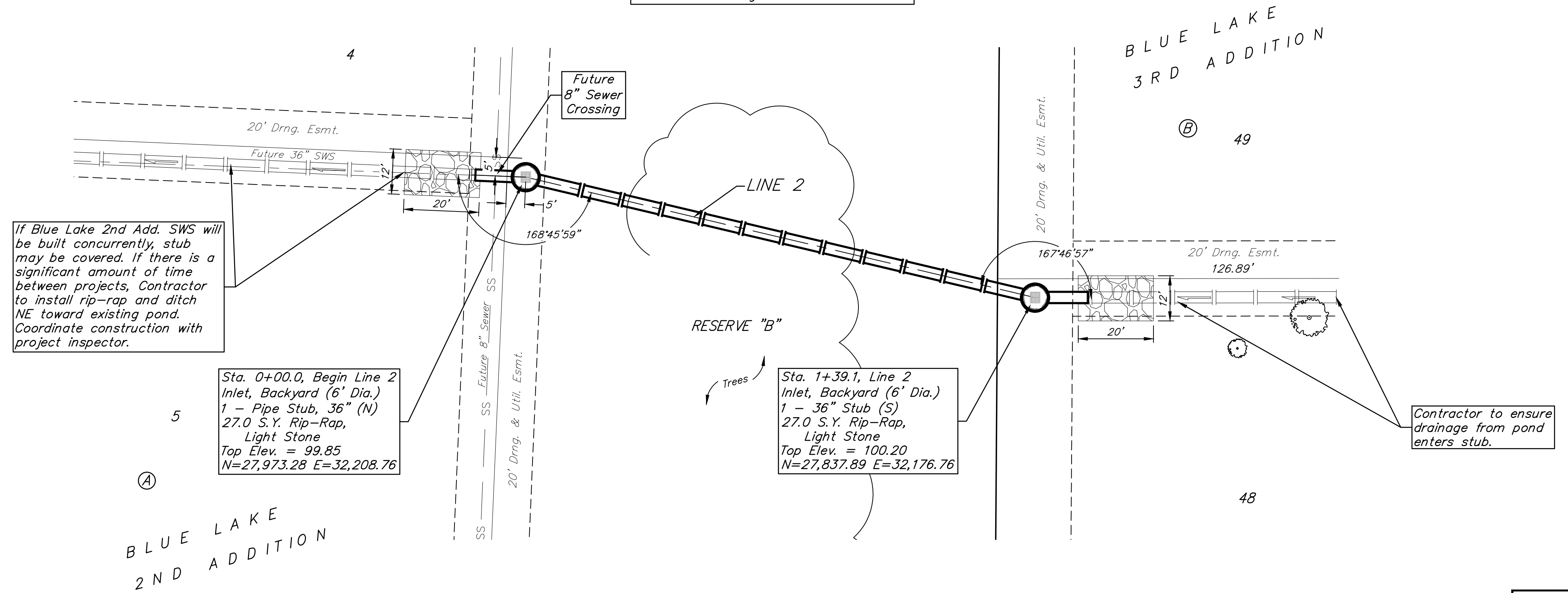
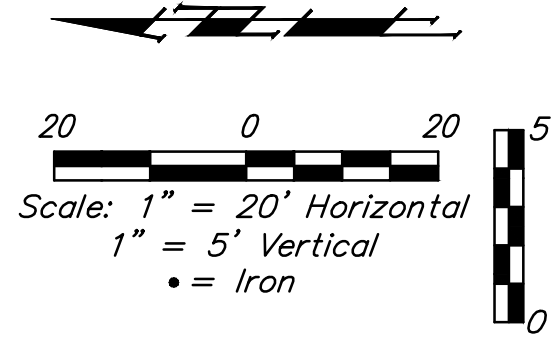
**BENCHMARKS:**

BM #1 - "+" on north side of manhole rim ~42' east and 28' south of the intersection of MacArthur & Bluelake St.  
Elev. = 99.97 City Datum

BM #2 - "□" with + cut on northwest face of drop inlet on north side of MacArthur Road, 79.4' North of centerline of MacArthur Road and 152.3' E/SE of southwest corner of Reserve "C", Blue Lake 3rd Addition.  
Elev. = 95.55 City Datum

Trees in conflict with SWS construction to be removed by contractor. To be paid for as lump sum bid item "Site Clearing"

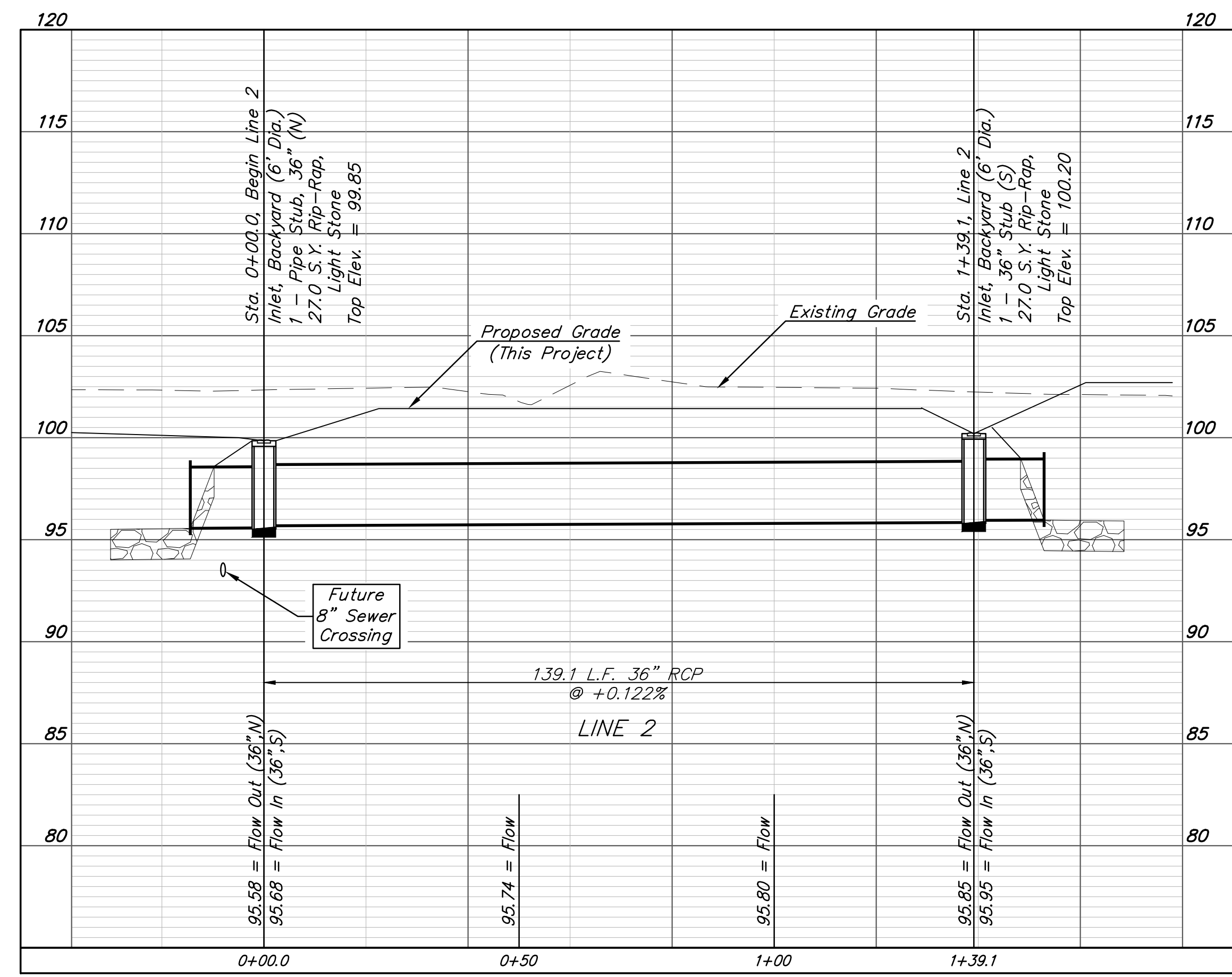
All other trees shall remain and be protected from damage during construction. Overhanging limbs shall be trimmed by the Contractor using a chain saw only as necessary for construction and with approval of the Engineer. Cost of tree trimming to be included in bid item "Site Clearing"



If Blue Lake 2nd Add. SWS will be built concurrently, stub may be covered. If there is a significant amount of time between projects, Contractor to install rip-rap and ditch NE toward existing pond. Coordinate construction with project inspector.

Sta. 0+00.0, Begin Line 2 Inlet, Backyard (6' Dia.)  
1 - Pipe Stub, 36" (N)  
27.0 S.Y. Rip-Rap, Light Stone  
Top Elev. = 99.85  
N=27,973.28 E=32,208.76

Sta. 1+39.1, Line 2 Inlet, Backyard (6' Dia.)  
1 - 36" Stub (S)  
27.0 S.Y. Rip-Rap, Light Stone  
Top Elev. = 100.20  
N=27,837.89 E=32,176.76



**BAUGHMAN COMPANY**

315 Ellis St.  
Wichita, KS 67211  
316-262-7271  
BaughmanCo.com

BLUE LAKE 3RD ADD.  
Phase I

**LINE 2**

STORM WATER DRAIN IMPROVEMENTS

PROJECT NUMBER:  
23-01-E418

DESIGN: AEG DRAWN: TMS

DATE: October 9, 2023

SHEET **3** OF **26**

File: E:\Projects\Blue Lake 3rd Addition\_22-02-P755\Engineering\Phase 1\SWD 23-01-E418\SWD.dwg