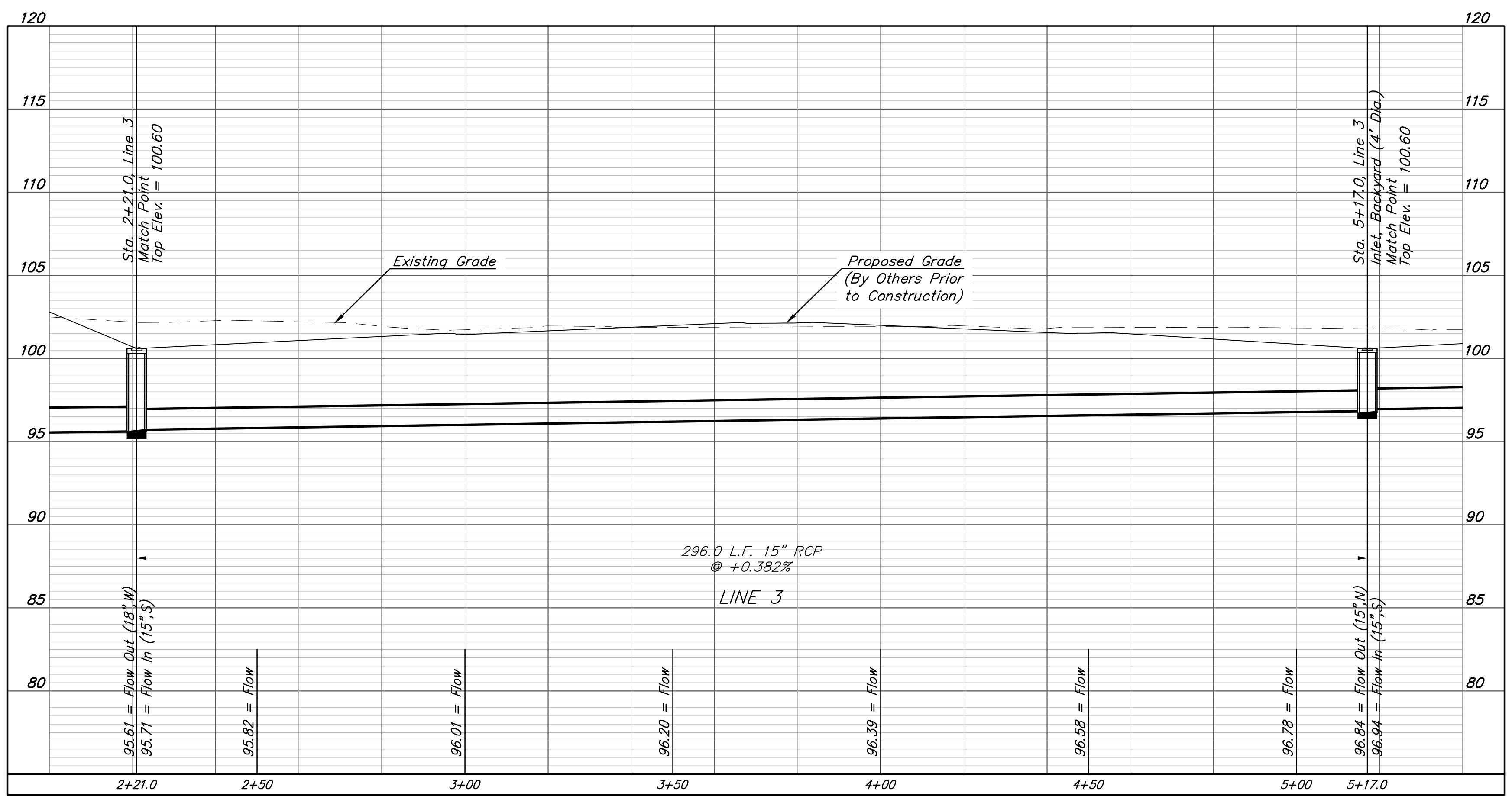
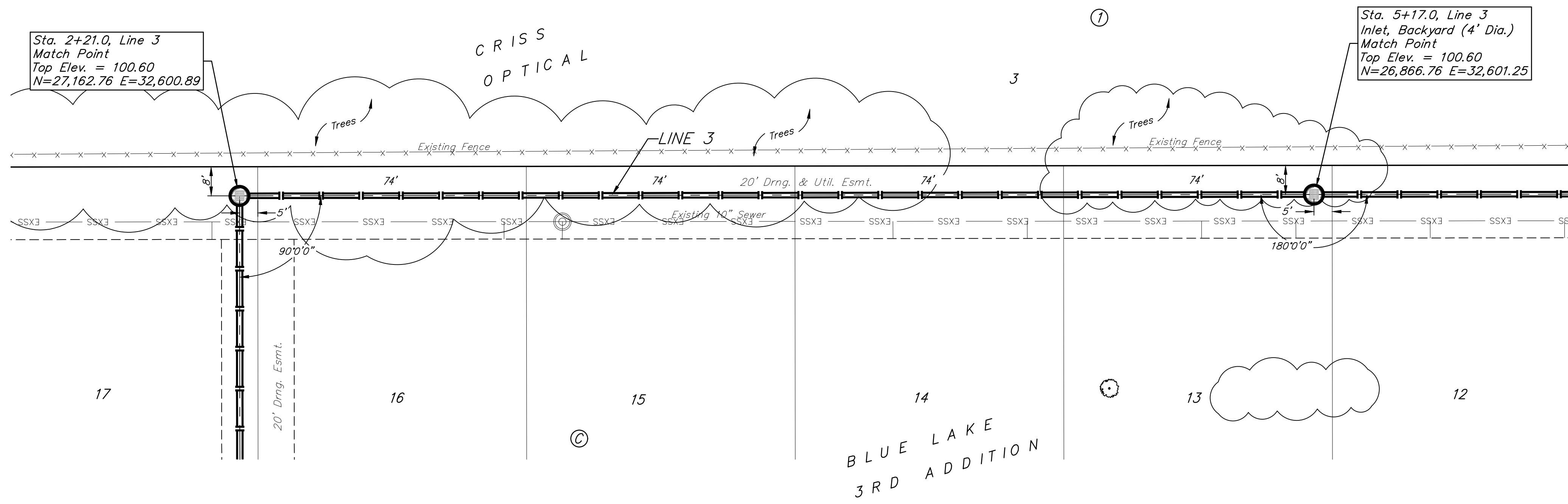
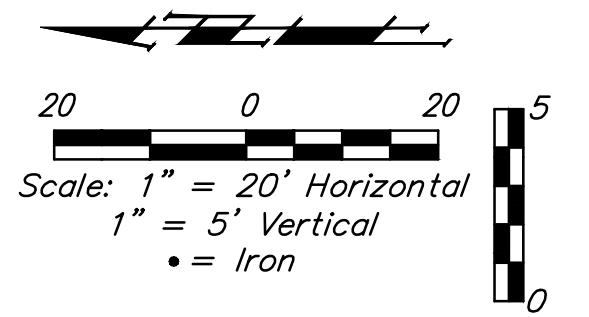


**BENCHMARKS:**  
 BM #1 - "+" on north side of manhole rim ~42' east and 28' south of the intersection of MacArthur & Bluelake St.  
 Elev. = 99.97 City Datum

BM #2 - "□" with + cut on northwest face of drop inlet on north side of MacArthur Road, 79.4' North of centerline of MacArthur Road and 152.3' E/SE of southwest corner of Reserve "C", Blue Lake 3rd Addition.  
 Elev. = 95.55 City Datum

Trees in conflict with SWS construction to be removed by contractor. To be paid for as lump sum bid item "Site Clearing"

All other trees shall remain and be protected from damage during construction. Overhanging limbs shall be trimmed by the Contractor using a chain saw only as necessary for construction and with approval of the Engineer. Cost of tree trimming to be included in bid item "Site Clearing"



**BAUGHMAN COMPANY**  
 315 Ellis St.  
 Wichita, KS 67211  
 316-262-7271  
 BaughmanCo.com

BLUE LAKE 3RD ADD.  
 Phase 1

**LINE 3**

STORM WATER SEWER IMPROVEMENTS

PROJECT NUMBER:  
 23-06-E530

DESIGN: AEG DRAWN: TMS  
 DATE: October 9, 2023

SHEET **7** OF **27**

File: E:\Projects\Blue Lake 3rd Addition\_22-02-P755\Engineering\Phase 1\SWS 23-06-E530\SWS.dwg