

GENERAL NOTES:

- The Contractor shall comply with all applicable safety regulations. All construction shall be completed following current City Standard Specifications and Special Provisions.
- Contractor will be required to provide notice to utility companies a minimum of seventy-two (72) hours prior to any excavation, as follows:
Kansas One-Call 687-2470
The Contractor must notify the following in case of an emergency:
AT&T 1-800-246-8464
Black Hills Energy 1-800-694-8989
City of Wichita Water & Sewer 1-316-219-8921
City of Wichita Stormwater 1-316-268-4090
City of Wichita Traffic 1-316-268-4034
Cox Communications 1-888-249-3530
Kansas Gas Service 1-888-482-4950
Eergy 1-800-544-4857
- Utility service lines, poles, etc. are to be adjusted as necessary by others prior to construction unless the plans specifically call for their adjustment by the Contractor or unless the plans specifically identify a utility to be adjusted by its owner during construction. Existing utilities and their location, as shown on the plans, represent the best information obtainable for design. The Contractor will be required to work around existing utilities within the right-of-way which do not conflict with proposed construction.
- Rubble from the removal of miscellaneous structures and excess excavation which is to be wasted shall be disposed of on sites to be provided by the Contractor. These sites shall be approved by the Engineer as to suitability, appearance and site location. Locations, in the opinion of the Engineer, that will leave an unsightly appearance will not be approved. All disposal sites must be approved by the Kansas Department of Health and Environment. Material either stockpiled or disposed of in a flood plain will require a Kansas State Board of Agriculture permit. Any material dumped in waters of the United States or wetlands is subject to U.S. Corps. of Engineers permitting regulations. Any material buried or stockpiled beyond approved construction limits will require additional archaeological investigations unless buried in a previously approved borrow location.
- The Contractor shall give all property owners and/or tenants of developed property abutting the construction of this project a minimum of ten (10) days notice prior to start of construction.
- The Contractor shall be responsible for preserving property irons. The Contractor will be required to re-establish any property irons which are damaged or destroyed by his construction operations. Such irons shall be re-established by a licensed land surveyor in accordance with state laws
- All elevations shown are City Datum. City Datum + 1187.8 = NAVD88.
- A portion of excess excavated material shall be mounded around manholes which extend more than one (1) foot above the existing ground. Such mound shall be constructed with new development a six (6) foot diameter flat top with 4 to 1 side slopes down to the original ground. The elevation of the flat top of the mound shall be 0.4 foot below the top to the manhole.
- Contractor shall limit the extent of trench openings overnight and weekends to less than 50 feet.
- The Contractor shall protect from damage and support existing utilities through construction as approved by the utility owner and the Engineer at the contractor's expense.
- All existing and proposed erosion control measures including silt fencing, erosion control mat, straw bales, inlet barriers, and const. entrance shall be maintained throughout construction by the contractor and until project is accepted by the City of Wichita. The on-site engineer shall complete weekly reports on the status of erosion control measures. The contractor shall be required to comply with maintenance and/or replacement of erosion control measures as determined by the on-site engineer until project is accepted by City of Wichita. Maintenance and/or replacement of erosion control measures to be paid by L.S. bid item "Maintain Existing BMPs".
- All excess excavation shall remain on-site and shall be spread or stockpiled at a location to be determined by developer.

- Any areas disturbed during construction in Res. "B" & "D" above the water surface or in street R/W adjacent to Reserves shall be seeded and mulched as follows:
Seed -- Kansas Premium Fescue Blend; 8 lbs. PLS/1000 Sq. Ft.
Annual Rye grass; 3 lbs./1000 Sq. Ft.
Fertilizer -- 12-24-12 Ratio; 45 Lbs./Ac.
Mulch -- 2 Tons Prairie Hay/Ac.
All other areas disturbed during construction are to be seeded as follows:
Seed -- Rye grass; 5 lbs./1000 Sq. Ft.
All costs associated with seeding including mobilization, preparation of ground, seeding, fertilizing, mulching, etc. shall be included in the L.S. bid item "Seeding".
- Existing trees shall be trimmed/removed ONLY with approval of the Developer. Trimming of overhanging limbs will be permitted only with chainsaws. Trees not in direct conflict with new construction shall remain and be protected from damage. Prior to the start of construction, the Contractor shall schedule an on-site meeting with the Developer to discuss treed areas. All trimming and/or removal shall be included in bid item "Site Clearing".
- The developer for this project is BLJ&P, LLC, Jayson L. Russell, Manager (316)644-8333

Benchmarks

BM #1 - "+" on north side of manhole rim ~42' east and 28' south of the intersection of MacArthur & Bluelake St.
Elev. = 99.97 City Datum

BM #2 - "□" with + cut on northwest face of drop inlet on north side of MacArthur Road, 79.4' North of centerline of MacArthur Road and 152.3' E/SE of southwest corner of Reserve "C", Blue Lake 3rd Addition.
Elev. = 95.55 City Datum

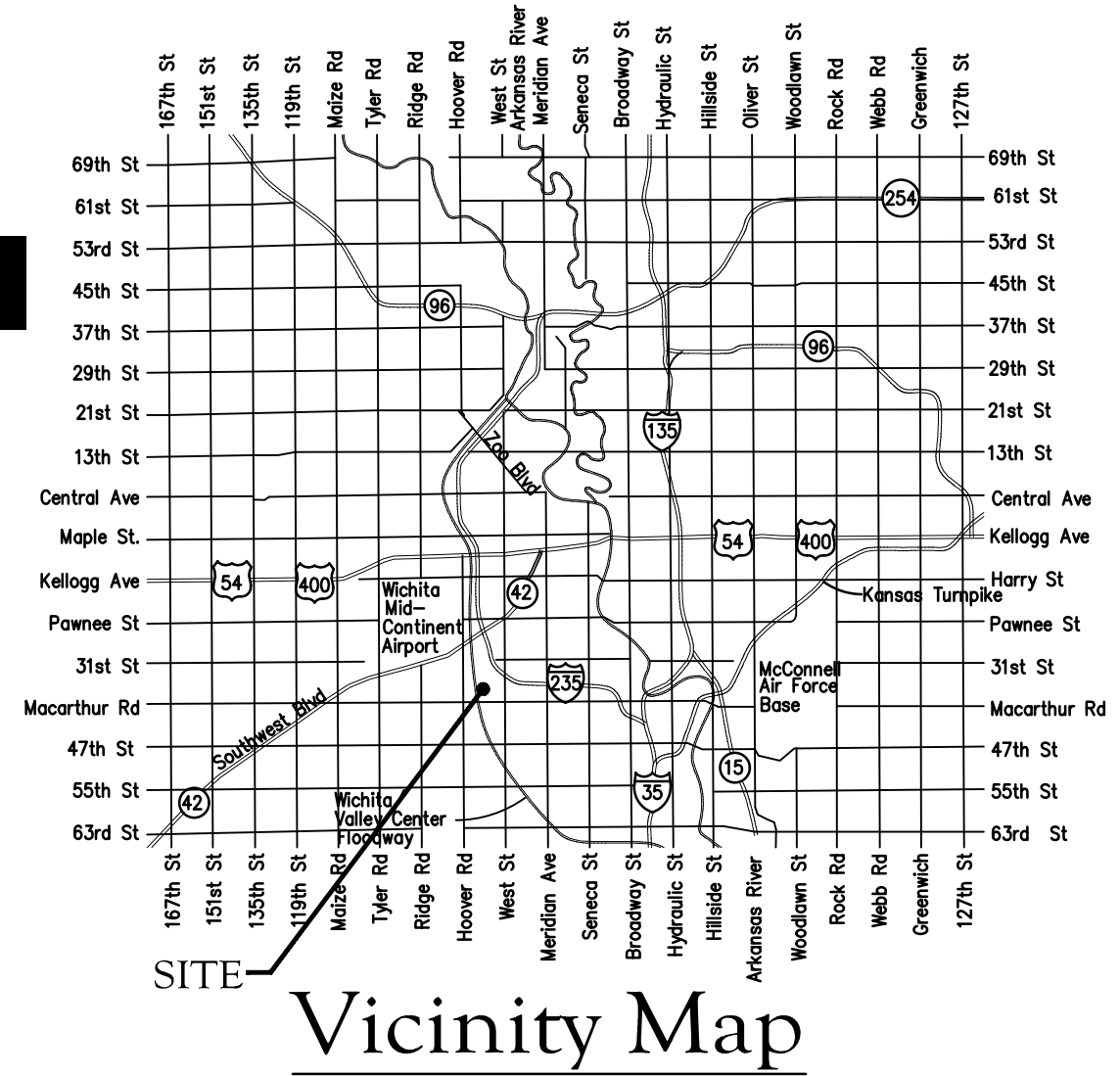
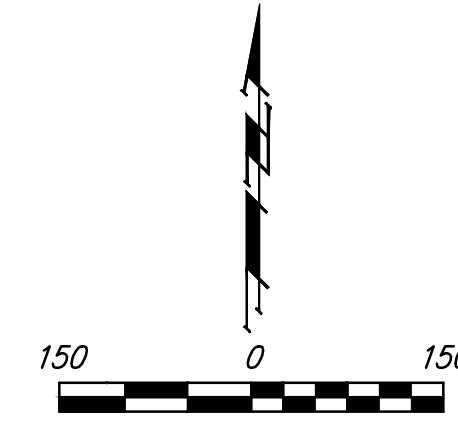
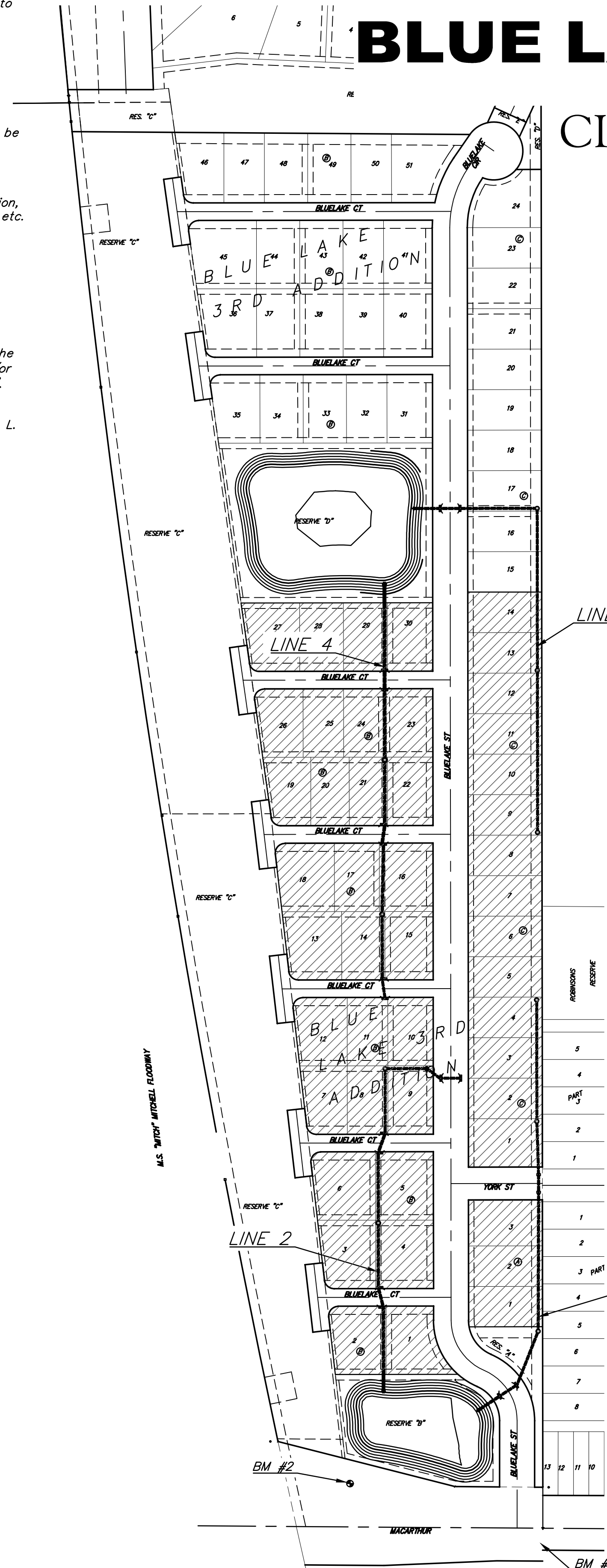
STORM SEWER IMPROVEMENTS #788

to serve

BLUE LAKE 3RD ADD. - Ph. I

CITY OF WICHITA, KANSAS

Gary Janzen, P.E. City Engineer
Project Number 458-2023-085552
Org Code 47312723
Munis Number E3133



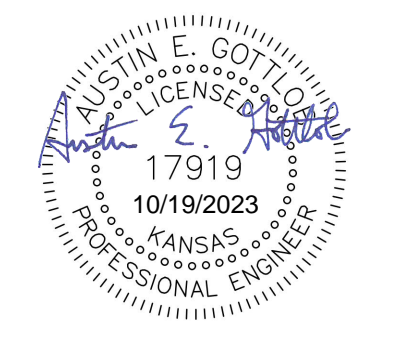
Sheet Index

Title Sheet	1
Line 1	2-3
Line 2	4-5
Line 3	6-8
Line 4	9-10
Erosion Control Plan	11-13
Type 1A Inlet L=5' and 10' Detail	14
Backyard Inlet Detail	15
Precast Concrete Manhole Detail	16
MH-Inlet Frame & Cover Detail	17
Miscellaneous Detail	18
Erosion Control BMP Details	19-23
Coordinate Sheet	24-26
Copy of Plat	27

Stormwater Certification:
 New Development Redevelopment (Circle One)
 Stormwater Permit # SW2023-0051
 NOI Permit # S-AR94-1802 KSR121085

These construction plans were prepared in accordance with the current Stormwater management Regulations as set forth in the City of Wichita's Stormwater Management Ordinance 16.32 and the policies/guidelines presented in the Wichita/Sedgwick County Stormwater Manual.

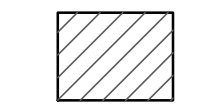
Site Area (Acres) = 38.5 Ac.
 Disturbed Area (Acres) = 38.5 Ac.
 Water Quality Treatment: Infiltration Basins/Dry Detention
 Downstream Channel Protection: N/A
 Detention: Infiltration Basins/Dry Detention
 The BMP used for this development is Infiltration Basins/Dry Detention



October 19, 2023

BAUGHMAN COMPANY
 315 Ellis St. Wichita, KS 67211 316-262-7271
 BaughmanCo.com

Benefit District



E:\Projects\Blue Lake 3rd Addition 22-02-P758\Engineering\Phase 1\SWIS 23-06-E301\SWIS.dwg