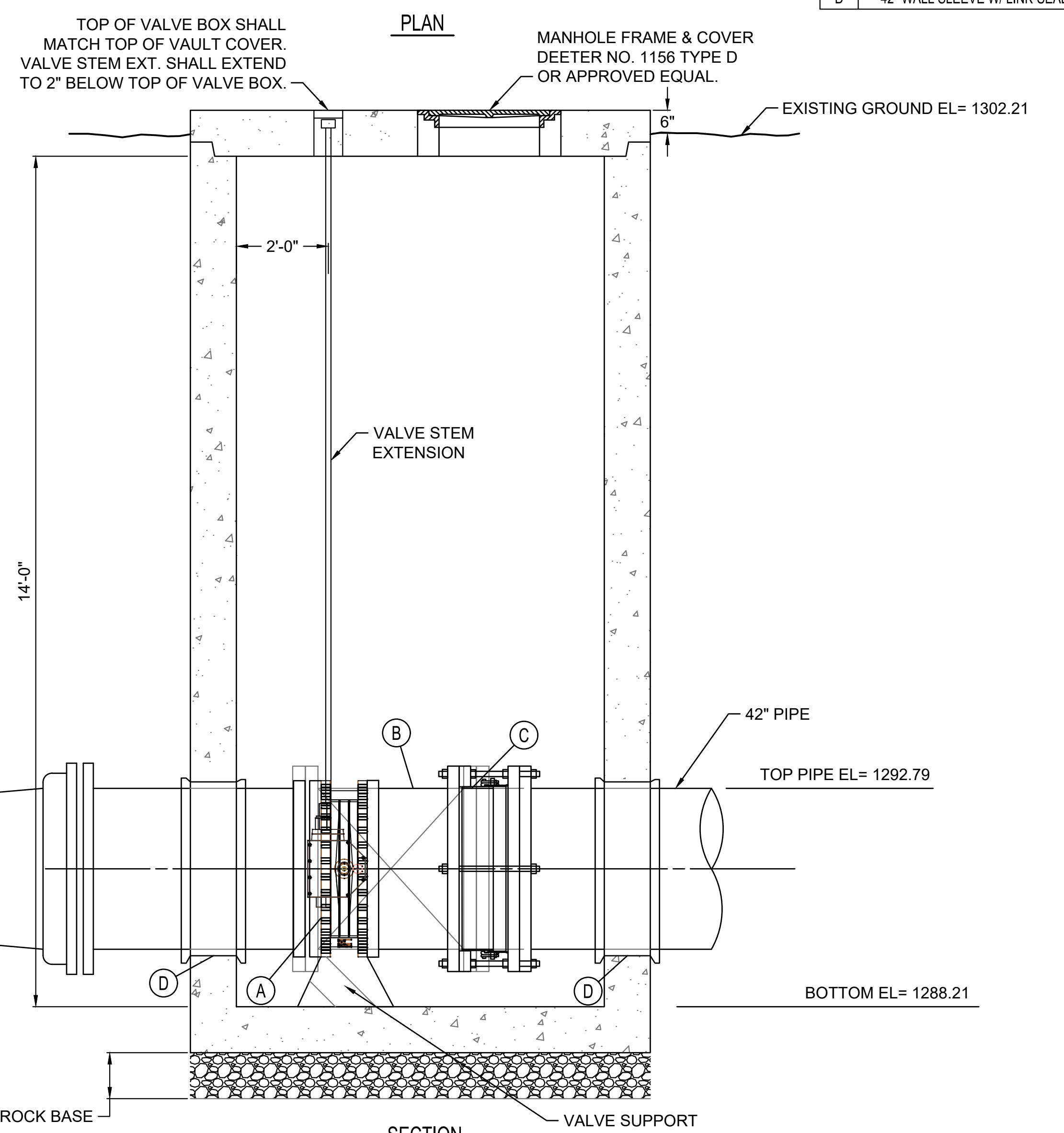
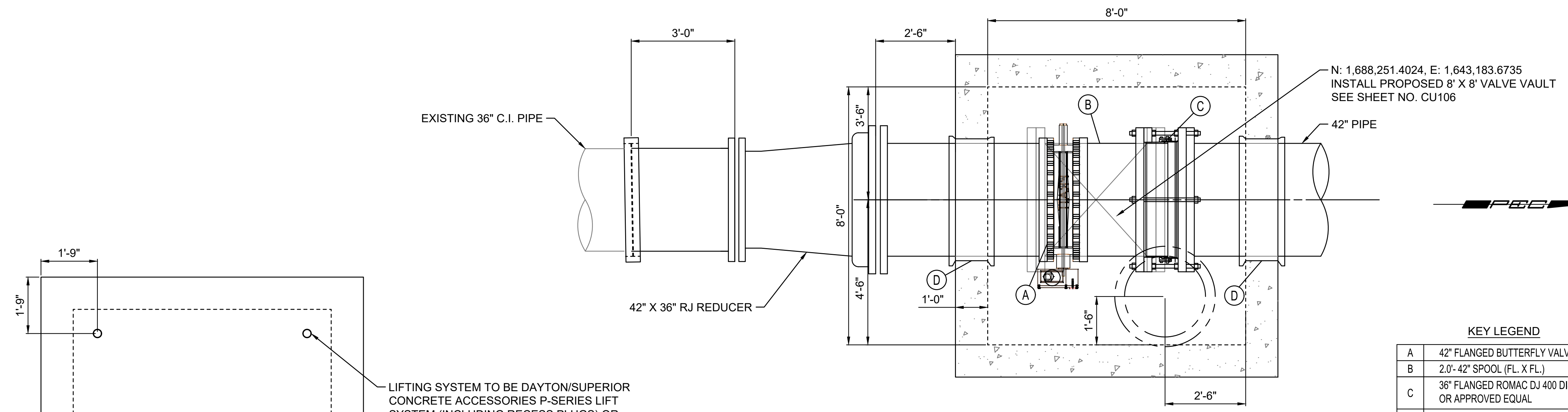
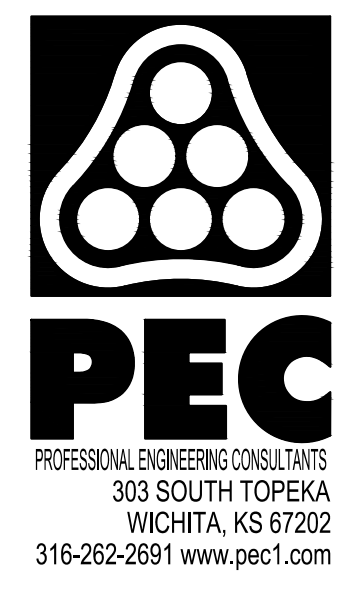
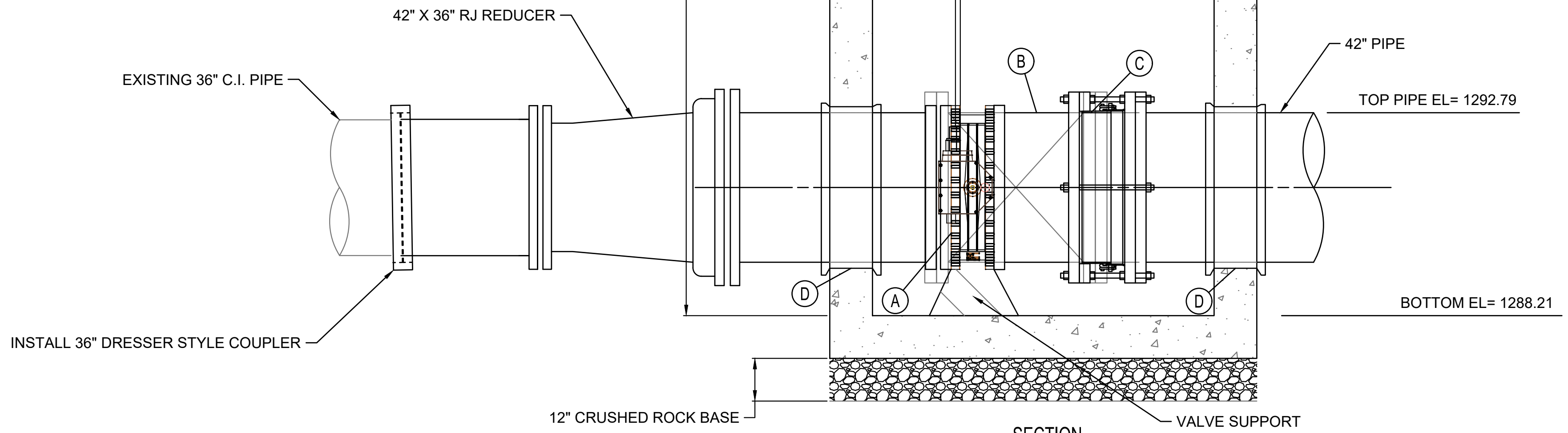


SAVED 6/20/2023 4:56:41 PM BY KURTIS DEKAT  
 PLOTTED 10/11/2023 4:44:19 PM BY KURTIS DEKAT  
 U:\WICHITA-CIVIL\2020\200335\004\PEC\DRAWINGS\PHASE 1 AND 2\200335-004-CU107.DWG



**VALVE VAULT NOTES:**

1. THE STRUCTURE JOINTS SHALL BE SEALED IN ACCORDANCE WITH CITY OF WICHITA STANDARD SPECIFICATIONS FOR PRECAST MANHOLES. NO COATINGS ARE REQUIRED.
2. THE CONTRACTOR SHALL UTILIZE RESTRAINED JOINT PIPE, TIE RODS, OR OTHER APPROVAL METHODS TO RESTRAIN ALL VALVES, FITTINGS, AND PIPING AT THE VALVE AND CONNECTION LOCATIONS.
3. SEE SHEETS NO. CU \_\_\_ FOR STRUCTURAL DETAILS.



**CONSTRUCTION PLANS**  
 FOR  
**HESS PUMP STATION  
 SITE VALVE REPLACEMENT  
 (PHASE 1 AND 2)**  
 PAUL GUNZELMAN, P.E. - INTERIM CITY ENGINEER  
 CITY OF WICHITA PROJECT NO. 448-2021-005881

Issue:	
JOB NO.	35-200335-004-0042
DATE	04/18/2023
PM	TBRK
DESIGNED BY	KJW
DRAWN BY	KTD
CHECKED BY	RWG

PROPOSED 42" VALVE VAULT DETAILS (PHASE 2)

**CU107**