

SANITARY SEWER AND WATERLINE IMPROVEMENTS

TO SERVE

NORTH JUNCTION UTILITY RELOCATION

Apex Excavating - Contractor
 J. Terhune - City of Wichita, Field Project Engineer
 M. Thom - City of Wichita, Inspector
 As-built
 Release Date: 4/3/2023
 Completion Date:
 : apr 11/15/2023

SANITARY SEWER: CITY OF WICHITA ENGINEERING PROJECT NO. 468-2021-002929

ORG CODE 53200020, MUNIS NO. S0029

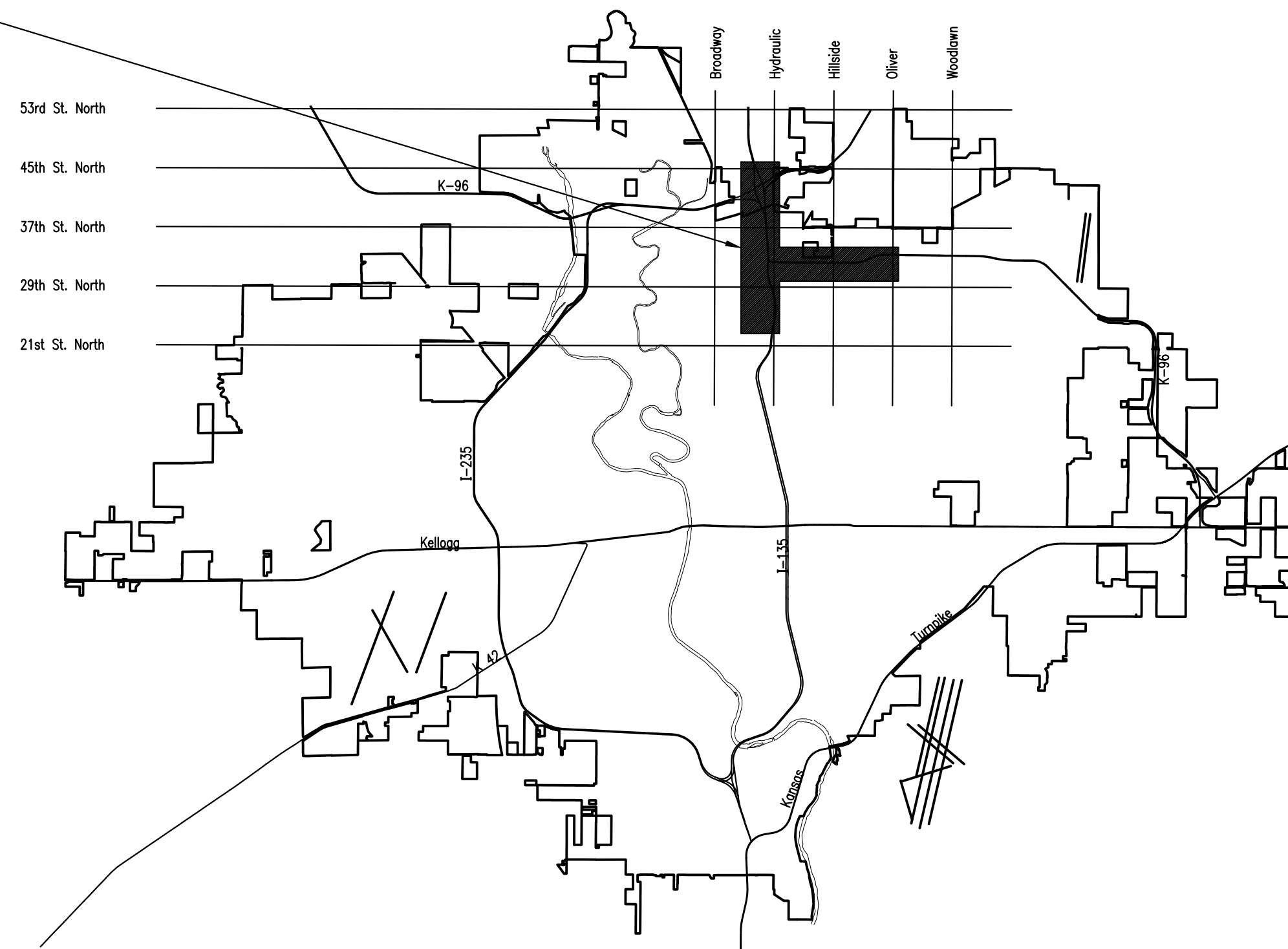
WATERLINE: CITY OF WICHITA ENGINEERING PROJECT NO. 448-2021-034139

ORG CODE 54250320, MUNIS NO. W0030

CITY OF WICHITA, KANSAS

GARY JANZEN, P.E. - CITY ENGINEER

PROJECT SITE
 NORTH JUNCTION



LOCATION MAP

INDEX OF SHEETS

SHEET NUMBER	SHEET TITLE
CU001	TITLE SHEET
CU002	GENERAL NOTES
CU003	OVERALL KEY MAP
CU100	SANITARY SEWER KEY MAP, CONTROL, & BUBBLE MAP
CU101	SANITARY SEWER ADJUSTMENT NO. 1
CU102	SANITARY SEWER ADJUSTMENT NO. 4
CU103	SANITARY SEWER LINE NO. 1
CU104	SANITARY SEWER SERVICE LINE NO. 1
CU200	PRECAST SANITARY SEWER MANHOLE
CU201	MANHOLE FRAME AND COVER DETAILS
CU202	VERTICAL RISER ASSEMBLY SEWER DETAIL
CU300	WATER LINE NO. 1 KEY MAP, CONTROL, & BUBBLE MAP
CU301	WATER LINE NO. 2 KEY MAP, CONTROL, & BUBBLE MAP
CU302	WATERLINE NO. 1
CU303	WATERLINE NO. 1 - VALVES
CU304 THRU CU306	WATERLINE NO. 2
CU400	STANDARD WATER ASSEMBLY DETAIL
CU401	MISCELLANEOUS WATER DETAILS
CU402	STANDARD WATER SERVICE DETAIL
CU500 THRU CU504	EROSION CONTROL DETAILS
CT101	37TH STREET TRAFFIC CONTROL PLAN
CT102 THRU CT105	HYDRAULIC AVE TRAFFIC CONTROL PLAN



SANITARY SEWER AND WATERLINE IMPROVEMENTS
 TO SERVE
 NORTH JUNCTION UTILITY RELOCATION
 GARY JANZEN, P.E. - CITY ENGINEER
 SS: CITY OF WICHITA PROJ. NO. 468-2021-002929
 WL: CITY OF WICHITA PROJ. NO. 448-2021-034139

Issue:		
JOB NO.	35-210253-000-0042	
DATE	01 JUNE 2021	
PM	TBK	
DESIGNED BY	TBK	
DRAWN BY	KTD	
CHECKED BY	RWG	
TITLE SHEET		
CU001		

SAVED 9/13/2022 2:41:25 PM BY KURTIS DEKAT
 PLOTTED 9/13/2022 2:41:44 PM BY KURTIS DEKAT
 U:\WICHITA-CIVIL\2021\1210253\000\MIDDRAWINGS\210253-000-CU001.DWG

SEPTEMBER 2022

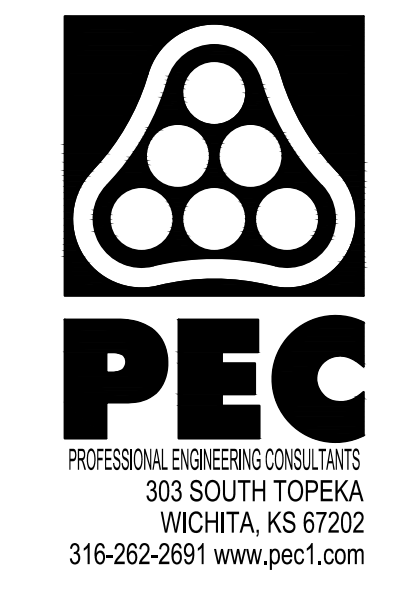
GENERAL NOTES

- 1. ALL CONSTRUCTION AND MATERIALS TO COMPLY WITH CITY OF WICHITA STANDARD CONSTRUCTION SPECIFICATIONS AND DETAILS, UNLESS OTHERWISE INCLUDED IN THE CONTRACT DOCUMENTS.
2. EACH BIDDER SHALL VISIT THE SITE OF THE PROJECT BEFORE SUBMITTING THE PROPOSAL FOR THIS WORK SO THAT THEY WILL BE FULLY INFORMED OF THE EXISTING FIELD CONDITIONS AND THE OBSTACLES WHICH MIGHT BE ENCOUNTERED.
3. AT LEAST 72 HOURS PRIOR TO BEGINNING ANY EXCAVATION (EXCLUDING WEEKENDS AND HOLIDAYS), THE CONTRACTOR SHALL CONTACT THE KANSAS ONE-CALL SYSTEM, A UTILITY LOCATION SERVICE, AT (316)-687-2470 OR 811 TO REQUEST THE LOCAL UTILITY COMPANIES TO LOCATE ANY EXISTING LINES WITHIN THE PROJECT AREA.
4. THE CONTRACTOR MUST NOTIFY THE FOLLOWING IN CASE OF AN EMERGENCY:
EMERGENCY DISPATCH: 911
COX COMMUNICATIONS: 888-249-3530
EVERGY: 800-383-1183
AT&T: 800-286-8313
KANSAS GAS SERVICE: 888-482-4950
BLACK HILLS ENERGY: 800-694-8989
CITY OF WICHITA WATER & SEWER: 316-219-8921
CITY OF WICHITA STORMWATER: 316-268-4090
CITY OF WICHITA TRAFFIC: 316-268-4034
5. THE CONTRACTOR SHALL GIVE ALL PROPERTY OWNERS AND/OR TENANTS OF DEVELOPED PROPERTY DIRECTLY ABUTTING THE CONSTRUCTION OF THIS PROJECT A MINIMUM OF SEVEN (7) DAYS ADVANCE NOTICE PRIOR TO THE START OF CONSTRUCTION.
6. THE CONTRACTOR SHALL NOT START WORK ON THE PROJECT UNTIL THE PROJECT INSPECTOR IS ASSIGNED AND IS PRESENT ON THE SITE. ANY WORK DONE WITHOUT INSPECTION WILL BE REQUIRED TO BE UNCOVERED FOR INSPECTION AT THE CONTRACTORS EXPENSE.
7. ALL ELEVATIONS SHOWN ARE NAVD88 DATUM. PRIOR TO CONSTRUCTION THE CONTRACTOR SHALL RE-ESTABLISH CONTROL POINTS AND BENCH MARKS AND VERIFY THEIR ACCURACY.
8. EXISTING UTILITIES AND THEIR LOCATION, AS SHOWN ON THE DRAWINGS, REPRESENT THE BEST INFORMATION OBTAINABLE FOR DESIGN. LOCATION INFORMATION HAS BEEN OBTAINED FROM THE VARIOUS UTILITY COMPANIES AND IS EITHER FROM COMPANY RECORD DRAWINGS OR COMPANY PROVIDED FIELD LOCATIONS. IT SHOULD BE NOTED THAT OTHER BURIED LINES AND CABLES MAY EXIST WHICH ARE NOT SHOWN ON THESE DRAWINGS.
9. THE CONTRACTOR SHALL EXPOSE AND VERIFY THE VERTICAL AND HORIZONTAL LOCATION OF EXISTING UTILITIES THAT ARE IN POTENTIAL CONFLICT WITH THE PROPOSED IMPROVEMENTS.
10. THE CONTRACTOR SHALL BE RESPONSIBLE FOR PRESERVING PROPERTY IRONS.
11. EASEMENTS AND RIGHTS-OF-WAY PROVIDED BY THE OWNER FOR THE PROJECT ARE SHOWN ON THE DRAWINGS.
12. THE CONTRACTOR SHALL CONTAIN THEIR OPERATIONS TO PERMIT LOCAL AND EMERGENCY TRAFFIC THROUGH AND ACROSS CONSTRUCTION AT ALL TIMES.
13. RUBBLE FROM THE REMOVAL OF MISCELLANEOUS STRUCTURES INCLUDING ANY TREES REMOVED, TREE TRIMMINGS, AND EXCESS EXCAVATION WHICH IS TO BE WASTED SHALL BE DISPOSED OF ON SITES PROVIDED BY THE CONTRACTOR.
14. THE CONTRACTOR SHALL AVOID REMOVAL OR TRIMMING OF ANY TREES OR SHRUBS WHERE POSSIBLE.
15. THE CONTRACTOR SHALL RESTORE ALL DITCHES, SWALES, ROAD SHOULDERS, AND BANKS TO THEIR ORIGINAL SLOPES AND GRADES EXCEPT AS SHOWN OTHERWISE.
16. THE CONTRACTOR SHALL INSTALL AND/OR MAINTAIN EROSION CONTROL METHODS AS SPECIFIED ON THE PLANS.
17. THE CONTRACTOR SHALL TAKE CARE TO PREVENT SILT AND DEBRIS FROM ENTERING ANY STORM DRAINAGE SYSTEM DURING CONSTRUCTION.
18. RECONSTRUCTION OF EROSION CONTROL MEASURES WHICH ARE DESTROYED BY WIND, FLOOD, FIRE, OR BY THE ACTIONS OF THE CONTRACTOR OR OTHERS SHALL BE PERFORMED BY THE CONTRACTOR AS DIRECTED BY THE ENGINEER AT NO ADDITIONAL COST.
19. ALL LAWN/TURF AREAS DISTURBED BY CONSTRUCTION OF THE PROPOSED IMPROVEMENTS SHALL BE RESTORED WITH THE SAME GRASS/SOD AS EXISTING.
20. THE CONTRACTOR SHALL SEED ALL AREAS DISTURBED BY CONSTRUCTION ACTIVITIES WITH TEMPORARY RYE GRASS.
21. OWNER SHALL BE RESPONSIBLE FOR CONSTRUCTION STAKING.
22. CONTRACTOR SHALL MAINTAIN UNINTERRUPTED UTILITY SERVICE TO ADJACENT FACILITIES DURING CONSTRUCTION.
23. WRITTEN REQUEST TO THE OWNER WILL BE REQUIRED 72 HOURS PRIOR TO A SCHEDULED UTILITY OUTAGE.
24. PROPERTIES WITHIN THE PROJECT LIMITS MAY HAVE UNDERGROUND SPRINKLER SYSTEMS.
25. PERMITS THAT HAVE BEEN OBTAINED BY THE OWNER ARE LISTED BELOW.
26. THE OWNER HAS ACQUIRED ALL NECESSARY KDOT PERMITS FOR RIGHT-OF-WAY ENCROACHMENTS.
27. THE CONTRACTOR SHALL LIMIT THE EXTENT OF TRENCH TO REMAIN OPEN OVERNIGHT AND WEEKENDS TO LESS THAN 50 FEET.
28. THE CONTRACTOR SHALL NOT BURY MANHOLES OR CLEANOUTS THAT HAVE TOP ELEVATIONS WHICH ARE LOWER THAN EXISTING GROUND.
29. THE CONTRACTOR SHALL PROVIDE MOUNDED EARTH AT MANHOLES AND CLEANOUTS THAT HAVE TOP ELEVATIONS GREATER THAN 1 FOOT ABOVE FINISHED GRADE.
30. THE CONTRACTOR SHALL PROVIDE POSITIVE DRAINAGE AWAY FROM ALL MANHOLE COVERS.
31. THE CONTRACTOR SHALL BE RESPONSIBLE FOR MAINTAINING CONTINUOUS FLOW OF SEWAGE THROUGH CONSTRUCTION.
32. THE CONTRACTOR SHALL PREVENT ANY CONSTRUCTION DEBRIS FROM ENTERING THE EXISTING SANITARY SEWER DURING CONSTRUCTION.
33. CONTRACTOR SHALL NOT DIVERT ANY SEWAGE FLOW THROUGH NEW PIPE OR MANHOLES UNTIL TESTING HAS BEEN COMPLETED AND ACCEPTED.
34. CONTRACTOR SHALL POTHOLE ALL UTILITY CROSSINGS A MINIMUM OF 200 FT. AHEAD OF THE EXCAVATION FOR OPEN CUT AND 500 FT. AHEAD OF HDD INSTALLATION.
35. THE CONTRACTOR SHALL VERIFY HORIZONTAL AND VERTICAL LOCATION, TYPE, SIZE AND CLASS OF EXISTING WATERLINES PRIOR TO MAKING CONNECTIONS.
36. THE CONTRACTOR MUST SCHEDULE THE CONNECTIONS TO THE EXISTING WATER DISTRIBUTION SYSTEM WITH THE CITY SUCH THAT THERE IS MINIMUM DISRUPTION TO THE SYSTEM.
37. AS REQUIRED, THE CONTRACTOR SHALL INSTALL A TEMPORARY BLOW OFF AND/OR TEMPORARY CONNECTION TO THE EXISTING WATERLINE/SYSTEM PER AWWA C651 RECOMMENDATIONS TO FILL AND TEST THE NEW WATERLINE.
38. WATERLINES SHALL HAVE A MINIMUM DEPTH OF BURY OF 42 INCHES, UNLESS SHOWN OTHERWISE.
39. FIRE HYDRANT BURY DEPTHS ARE BASED ON THE TOP ELEVATION OF THE PROPOSED WATER MAIN AND THE APPROXIMATE GROUND ELEVATION AT THE LOCATION OF THE FIRE HYDRANT.
40. CONCRETE THRUST BLOCKING SHALL BE INSTALLED AT ALL HORIZONTAL AND VERTICAL DEFLECTIONS OF 11 1/4 DEGREES OR MORE, UNLESS OTHERWISE SPECIFIED.
41. CONTRACTOR SHALL ABANDON THE EXISTING WATER MAIN TO THE LIMITS SHOWN ON THE PLAN SHEETS.
42. THE CONTRACTOR SHALL MINIMIZE SERVICE DISRUPTION TO PROPERTY OWNERS AND SHALL PROVIDE 48 HOURS WRITTEN NOTICE TO ANY PROPERTY OWNERS THAT WILL HAVE A DISRUPTION OF SERVICE.
43. THE CONTRACTOR SHALL MAINTAIN EXISTING WATERLINES IN SERVICE UNTIL THE NEW LINE IS DISINFECTED AND ALL TESTING IS COMPLETE AND APPROVED.
44. THE WATERLINE PIPE LENGTHS REPRESENT TRUE PIPE LENGTHS AND DO NOT INCLUDE FITTINGS/APPURTENANCES.
45. OPENING AND CLOSING WATER VALVES SHALL BE DONE SLOWLY TO PREVENT DAMAGE TO THE WATER DISTRIBUTION SYSTEM.
46. WHERE INDICATED IN THE DRAWINGS, THE SANITARY SEWER EXCAVATION SHALL BE SAND FILLED AND FLUSHED (JETTED AND VIBRATED) WITH WATER PER THE REQUIREMENTS LISTED IN THE STANDARD SPECIFICATIONS FOR THE CITY OF WICHITA, UNLESS FLOWABLE FILL OR OTHER IMPROVED BACKFILL MATERIAL IS OTHERWISE SPECIFIED.
47. MAINTAIN A MINIMUM OF 10-FOOT HORIZONTAL SEPARATION BETWEEN ALL WATER LINES (MAINS, SERVICES, AND FIRE HYDRANTS) AND ALL SANITARY SEWER LINES (MAINS, SERVICES, AND MANHOLES).
48. MAINTAIN A MINIMUM OF 2-FOOT VERTICAL SEPARATION BETWEEN ALL WATER LINES (MAIN AND SERVICES) AND ALL GRAVITY SANITARY SEWER LINES (MAINS, SERVICES, AND MANHOLES) AT CROSSINGS.
49. MAINTAIN A MINIMUM OF 2-FOOT VERTICAL SEPARATION BETWEEN ALL WATER LINES (MAINS AND SERVICES) AND ALL PRESSURIZED SANITARY SEWER LINES (FORCE MAINS AND SERVICES) AT CROSSINGS.
50. SUZETTE WILSON & KELLY KRAUS BLACK HILLS ENERGY 2330 N. HOOVER ROAD WICHITA, KS 67205 SUZETTE WILSON 316-941-1631 KELLY KRAUS 316-941-1628
51. SHANE SCHUMACHER WICHITA PUBLIC SCHOOLS FACILITIES DIVISION-SCHOOL SERVICE CENTER 3850 N. HYDRAULIC WICHITA, KS 67219 316-973-2230
52. JEFF CROSBY WICHITA SANITARY SEWER 8TH FLOOR - CITY HALL 455 N. MAIN WICHITA, KS 67202 316-268-4329
53. GREG LOLLEY WICHITA WATER 8TH FLOOR - CITY HALL 455 N. MAIN WICHITA, KS 67202 316-268-4334
54. KELLY FLEMING WICHITA STORM SEWER 8TH FLOOR - CITY HALL 455 N. MAIN WICHITA, KS 67202 316-268-4307
55. MARC HENDERSON COX COMMUNICATIONS ENGINEERING DEPARTMENT 901 GEORGE WASHINGTON BLVD. WICHITA, KS 67211 316-260-7745
56. ZACH LAWS EVERGY 1900 E. CENTRAL (3RD FLOOR) P.O. BOX 208 WICHITA, KS 67201 316-261-6264
57. JASON EDWARDS AT&T WICHITA CENTRAL UNIT 154 N. BROADWAY, ROOM 210 WICHITA, KS 67202 316-268-2008
58. ANDREA FOUST KANSAS GAS SERVICE 1021 E. 26TH ST. NORTH WICHITA, KS 67219 316-832-3126

SILT FENCE BARRIER 444 L.F.
CURB INLET PROTECTION 1 EACH
DITCH CHECK 6 EACH

UTILITY CONTACTS

- JEFF CROSBY WICHITA SANITARY SEWER 8TH FLOOR - CITY HALL 455 N. MAIN WICHITA, KS 67202 316-268-4329
GREG LOLLEY WICHITA WATER 8TH FLOOR - CITY HALL 455 N. MAIN WICHITA, KS 67202 316-268-4334
KELLY FLEMING WICHITA STORM SEWER 8TH FLOOR - CITY HALL 455 N. MAIN WICHITA, KS 67202 316-268-4307
MARC HENDERSON COX COMMUNICATIONS ENGINEERING DEPARTMENT 901 GEORGE WASHINGTON BLVD. WICHITA, KS 67211 316-260-7745
ZACH LAWS EVERGY 1900 E. CENTRAL (3RD FLOOR) P.O. BOX 208 WICHITA, KS 67201 316-261-6264
JASON EDWARDS AT&T WICHITA CENTRAL UNIT 154 N. BROADWAY, ROOM 210 WICHITA, KS 67202 316-268-2008
ANDREA FOUST KANSAS GAS SERVICE 1021 E. 26TH ST. NORTH WICHITA, KS 67219 316-832-3126
SUZETTE WILSON & KELLY KRAUS BLACK HILLS ENERGY 2330 N. HOOVER ROAD WICHITA, KS 67205 SUZETTE WILSON 316-941-1631 KELLY KRAUS 316-941-1628
SHANE SCHUMACHER WICHITA PUBLIC SCHOOLS FACILITIES DIVISION-SCHOOL SERVICE CENTER 3850 N. HYDRAULIC WICHITA, KS 67219 316-973-2230



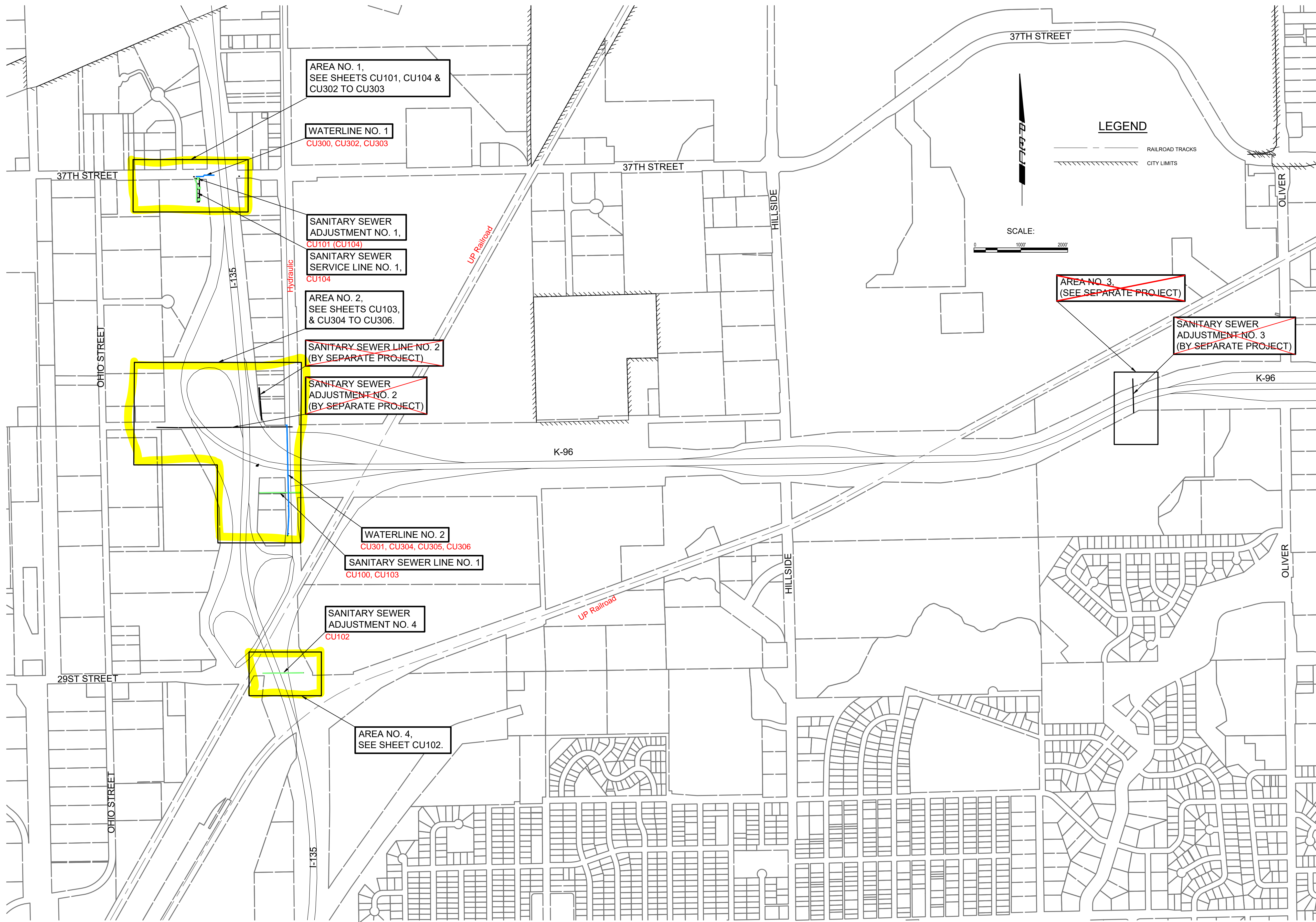
SANITARY SEWER AND WATERLINE IMPROVEMENTS TO SERVE NORTH JUNCTION UTILITY RELOCATION GARY JANZEN, P.E. - CITY ENGINEER SS: CITY OF WICHITA PROJ. NO. 468-2021-002929 WL: CITY OF WICHITA PROJ. NO. 448-2021-034139

Table with 2 columns: Field Name, Value. Includes Job No. 35-210253-000-0042, Date 01 JUNE 2021, PM TBK, Designed by TBK, Drawn by KTD, Checked by RWG.

GENERAL NOTES
CU002

SAVED 9/12/2022 2:08:10 PM BY KURTIS DEKAT
PLOTTED 9/13/2022 11:22:09 AM BY KURTIS DEKAT
U:\WICHITA-CIVIL\2021\12-10253\000\DRAWINGS\210253-000-CU002.DWG

SAVED 9/12/2022 2:13:40 PM BY KURTIS DEKAT
 PLOTTED 9/13/2022 11:22:22 AM BY KURTIS DEKAT
 U:\WICHITA-CIVIL\2021\210253\000\MIDDRAWINGS\210253-000-CU003.DWG



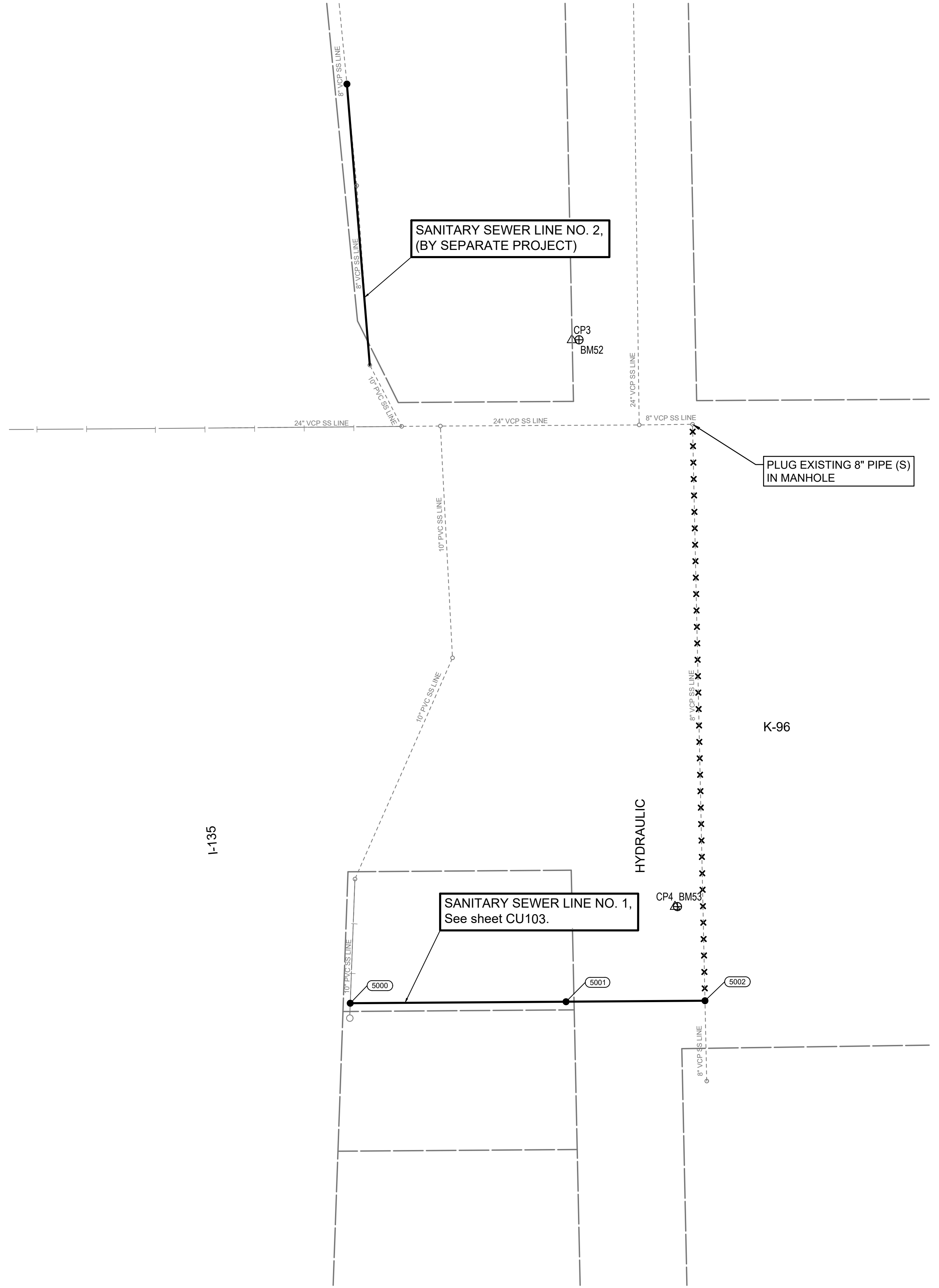
SANITARY SEWER AND WATERLINE IMPROVEMENTS
 TO SERVE
NORTH JUNCTION UTILITY RELOCATION
 GARY JANZEN, P.E. - CITY ENGINEER
 SS: CITY OF WICHITA PROJ. NO. 468-2021-002929
 WL: CITY OF WICHITA PROJ. NO. 448-2021-034139

Issue:	
JOB NO.	35-210253-000-0042
DATE	01 JUNE 2021
PM	TBK
DESIGNED BY	TBK
DRAWN BY	KTD
CHECKED BY	RWG

OVERALL KEY MAP

CU003

SAVED 9/12/2022 2:24:51 PM BY KURTIS DEKAT
 PLOTTED 9/13/2022 11:22:31 AM BY KURTIS DEKAT
 U:\WICHITA-CIVIL\2021\210253\000\MIDDRAWINGS\210253-000-CU100.DWG



LEGEND

- EXISTING SANITARY SEWER
- PROPOSED SANITARY SEWER
- EXISTING FORCE MAIN
- PROPOSED FORCE MAIN
- ABANDON EXISTING SANITARY SEWER



SANITARY SEWER LINE NO. 1				
COORDINATE LIST				
POINT	NORTHING	EASTING	STATION	DESCRIPTION
5000	1,706,551.1980	1,654,143.5728	10+00.00	PROP. SS MH-2
5001	1,706,553.0636	1,654,406.2960	12+63.34	PROP. SS MH-3
5002	1,706,554.2601	1,654,575.5019	14+32.80	PROP. SS MH-4

(5000) = COORDINATE POINT NO.

NOTE:
 SANITARY SEWER SERVICE LINE NO. 1 NOT SHOWN ON THIS SHEET.
 SEE SHEET NO. CU104 FOR
 SANITARY SEWER SERVICE LINE NO. 1 COORDINATES

HORIZONTAL DATUM/COORDINATE SYSTEM: ADJUSTED STATE PLANE
 COORDINATES NAD 83 KANSAS SOUTH ZONE
 PROJECT COORDINATE SYSTEM: (GRID) ON DESCRIBED COORDINATE SYSTEM
 VERTICAL DATUM: NAVD 88

BMK 52
 CHISELED SQUARE ON A RETAINING WALL, NORTH END OF SOUTH ENTRANCE TO FIRST WIRELESS
 EL= 1320.83 (NAVD88)

BMK 53
 CHISELED SQUARE ON THE WEST END OF NORTH RETAINING WALL AT EAST BOUND K-96 RAMP AT HYDRAULIC
 EL= 1319.55 (NAVD88)

BMK 54 (NOT SHOWN)
 CHISELED SQUARE ON THE CENTER OF THE NORTHEAST HEADWALL OF THE ABANDONED SCALE, DIRECTLY SOUTH OF POLE #W7F84558
 EL= 1325.61 (NAVD88)

- CP-3
 N: 1707358.366 E: 1654413.525
 MAG NAIL IN THE NORTH SIDE OF THE SOUTH ENTRANCE TO FIRST WIRELESS
- 15.0' S TO THE CENTERLINE OF THE ENTRANCE
 - 26.5' E TO THE W EDGE OF HYDRAULIC
 - 74.2' SSE TO THE TOP CENTER OF A FIRE HYDRANT
- CP-4
 N: 1706668.699 E: 1654538.965
 1/2" REBAR WITH PEC CONTROL POINT CAP, NORTH SIDE OF EAST BOUND K-96 RAMP AT HYDRAULIC
- 3.0' E TO A CHISELED SQUARE ON THE WEST END OF THE RETAINING WALL
 - 36.5' W TO THE EAST EDGE OF HYDRAULIC
 - 14.5' S TO THE NORTH EDGE OF K-96 ON-RAMP
- CP-5 (NOT SHOWN)
 N: 1707245.159 E: 1653219.950
 1/2" REBAR WITH PEC CONTROL POINT CAP
- 5.8' E TO A RAILROAD SPIKE IN THE WEST FACE OF A POWER POLE
 - 30.3' NORTH TO A KDOT RIGHT OF WAY FENCE (EAST/WEST)
 - 62.34' SSE TO A CHISELED SQUARE ON A RETAINING WALL (BM 54)
- CP-6 (NOT SHOWN)
 N: 1707290.5486 E: 1652531.478
 CHISELED CROSS ON THE SOUTHEAST CORNER OF A STORM DRAIN MANHOLE PAD
- 22.0' S TO THE CENTERLINE OF HAUL ROAD
 - 56.5' W TO THE CENTERLINE OF OHIO STREET
 - 64.9' WSW TO THE NORTHWEST CORNER OF CONCRETE FENCE COLUMN



SANITARY SEWER AND WATERLINE IMPROVEMENTS
 TO SERVE
NORTH JUNCTION UTILITY RELOCATION
 GARY JANZEN, P.E. - CITY ENGINEER
 SS: CITY OF WICHITA PROJ. NO. 468-2021-002929
 WL: CITY OF WICHITA PROJ. NO. 448-2021-034139

Issue:	
JOB NO.	35-210253-000-0042
DATE	01 JUNE 2021
PM	TBK
DESIGNED BY	TBK
DRAWN BY	KTD
CHECKED BY	RWG
SANITARY SEWER KEY MAP, CONTROL, & BUBBLE MAP	

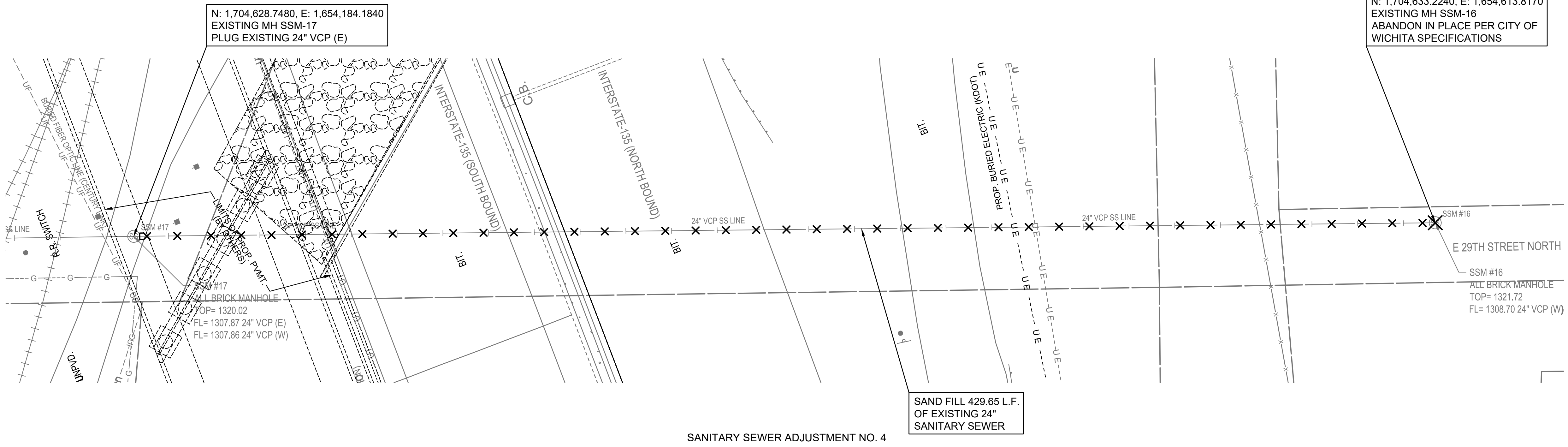
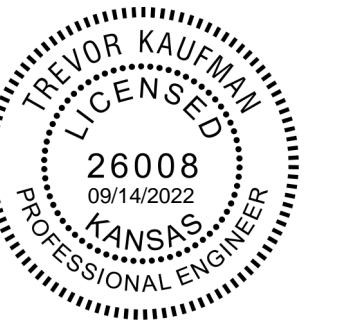
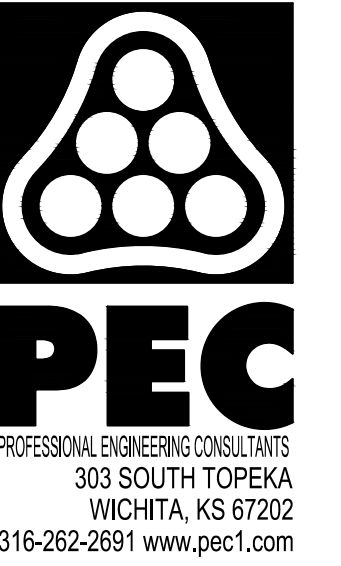
CU100

SAVED 4/8/2022 2:29:34 PM BY KURTIS DEKAT
PLOTTED 9/13/2022 11:23:00 AM BY KURTIS DEKAT
U:\WICHITA-CIVIL\2021\210253\000\MIDDRAWINGS\210253-000-CU102.DWG

LEGEND

- ✕ = DENOTES SANITARY SEWER LINE TO BE ABANDONED IN PLACE.
- ✕ = SANITARY SEWER MANHOLE TO BE ABANDONED
- ☐ = DENOTES CAP/PLUG BY THE CONTRACTOR. (INCLUDES REMOVAL AND REPLACEMENT OF PAVEMENT)

PLAN: LAT. & LONG. 0 10' 20' 40'
PROFILE: HORIZ. SAME AS ABOVE
VERT: 0 5'



SANITARY SEWER ADJUSTMENT NO. 4

SANITARY SEWER AND WATERLINE IMPROVEMENTS

NORTH JUNCTION UTILITY RELOCATION

GARY JANZEN, P.E. - CITY ENGINEER
SS: CITY OF WICHITA PROJ. NO. 468-2021-002929
WL: CITY OF WICHITA PROJ. NO. 448-2021-034139

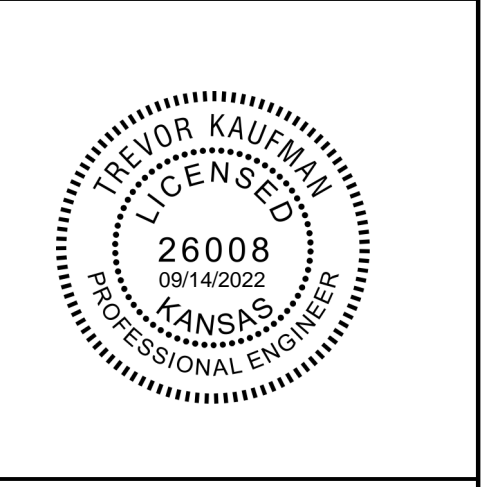
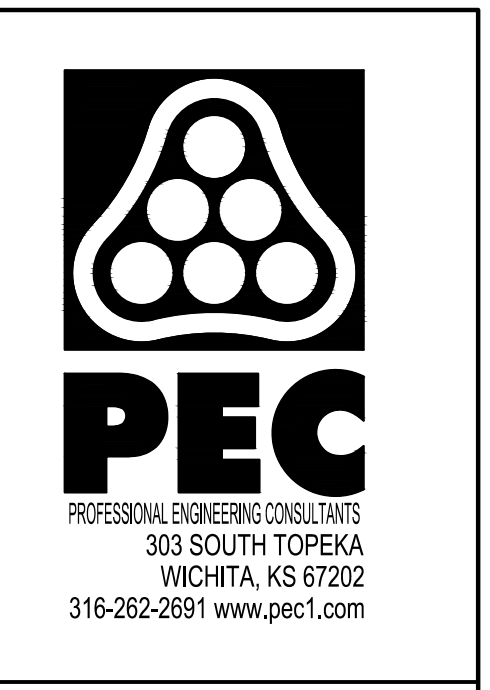
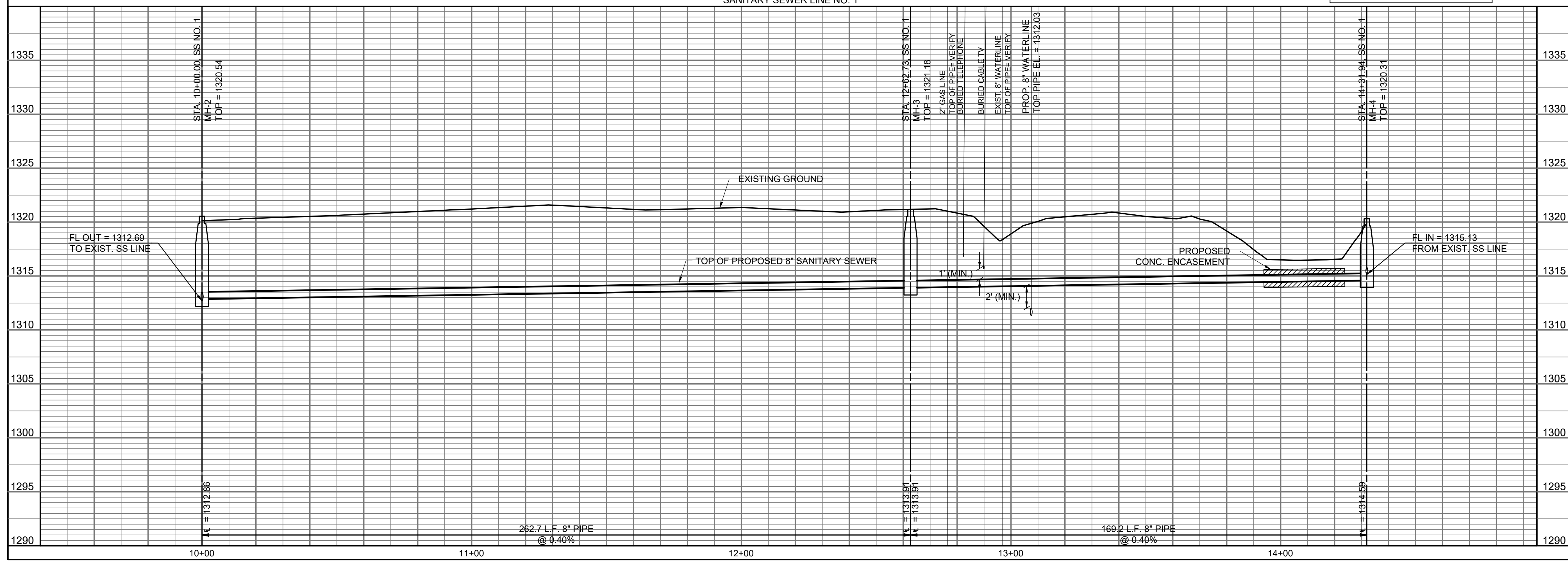
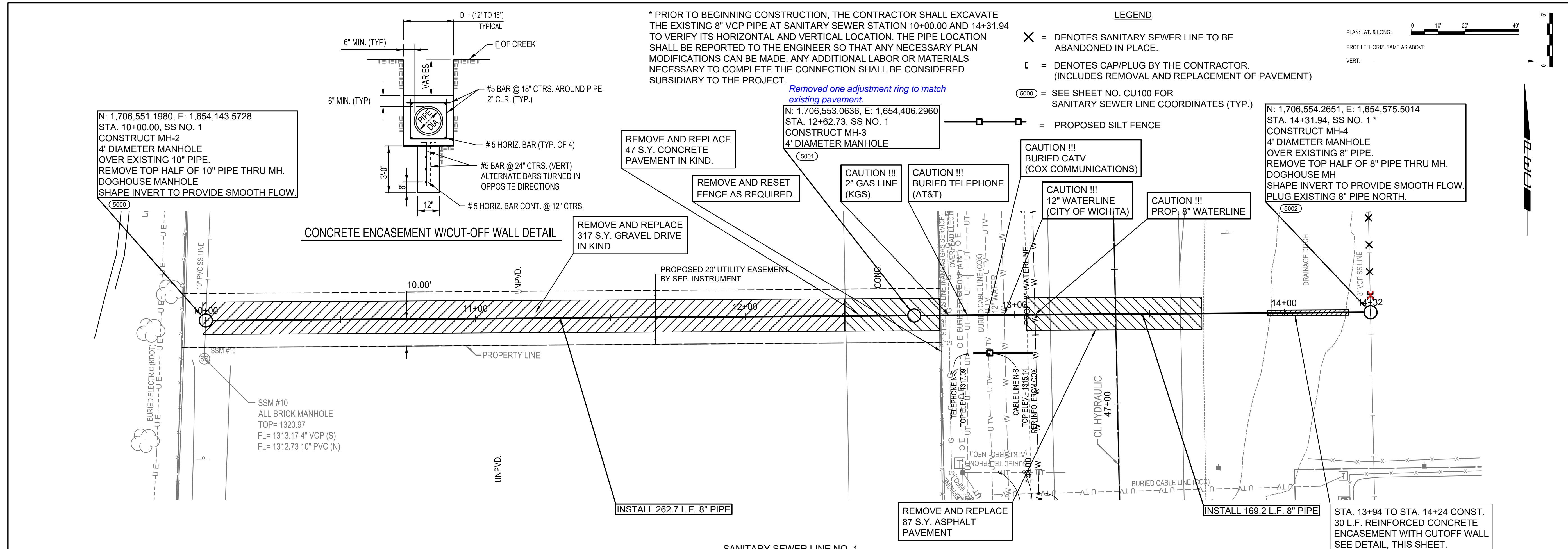
Issue:		

JOB NO.	35-210253-000-0042
DATE	01 JUNE 2021
PM	TBK
DESIGNED BY	TBK
DRAWN BY	KTD
CHECKED BY	RWG

SANITARY SEWER ADJUSTMENT NO. 4

CU102

SAVED 9/14/2022 9:44:59 AM BY KURTIS DEKAT
 PLOTTED 9/14/2022 9:51:44 AM BY KURTIS DEKAT
 U:\WICHITA-CIVIL\2021\210253\000\MIDRAWINGS\210253-000-CU103.DWG



SANITARY SEWER AND WATERLINE IMPROVEMENTS
 TO SERVE
NORTH JUNCTION UTILITY RELOCATION
 GARY JANZEN, P.E. - CITY ENGINEER
 SS: CITY OF WICHITA PROJ. NO. 468-2021-002929
 WL: CITY OF WICHITA PROJ. NO. 448-2021-034139

Issue:	
JOB NO.	35-210253-000-0042
DATE	01 JUNE 2021
PM	TBK
DESIGNED BY	TBK
DRAWN BY	KTD
CHECKED BY	RWG
SANITARY SEWER LINE NO. 1	
CU103	

